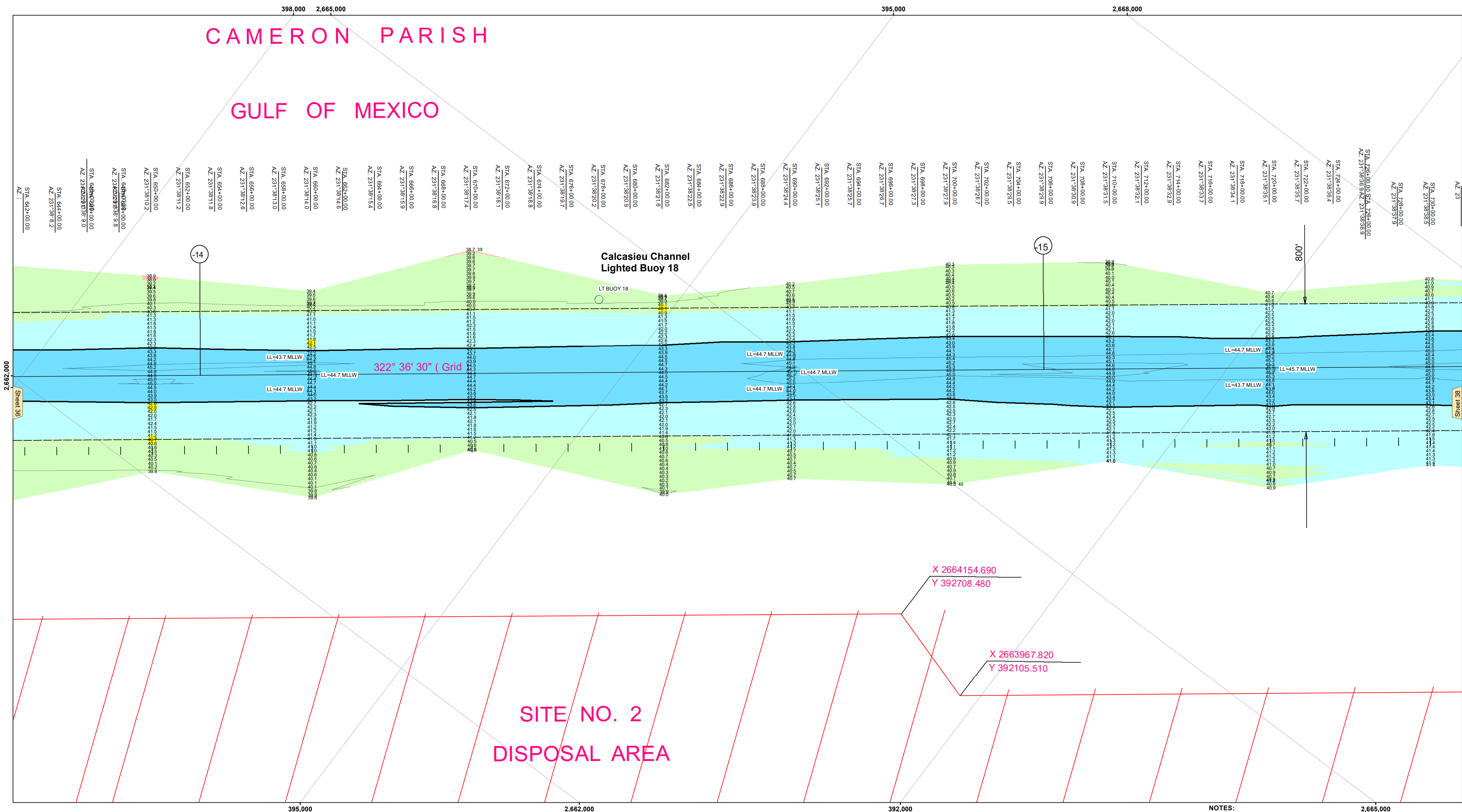


CAMERON PARISH
GULF OF MEXICO

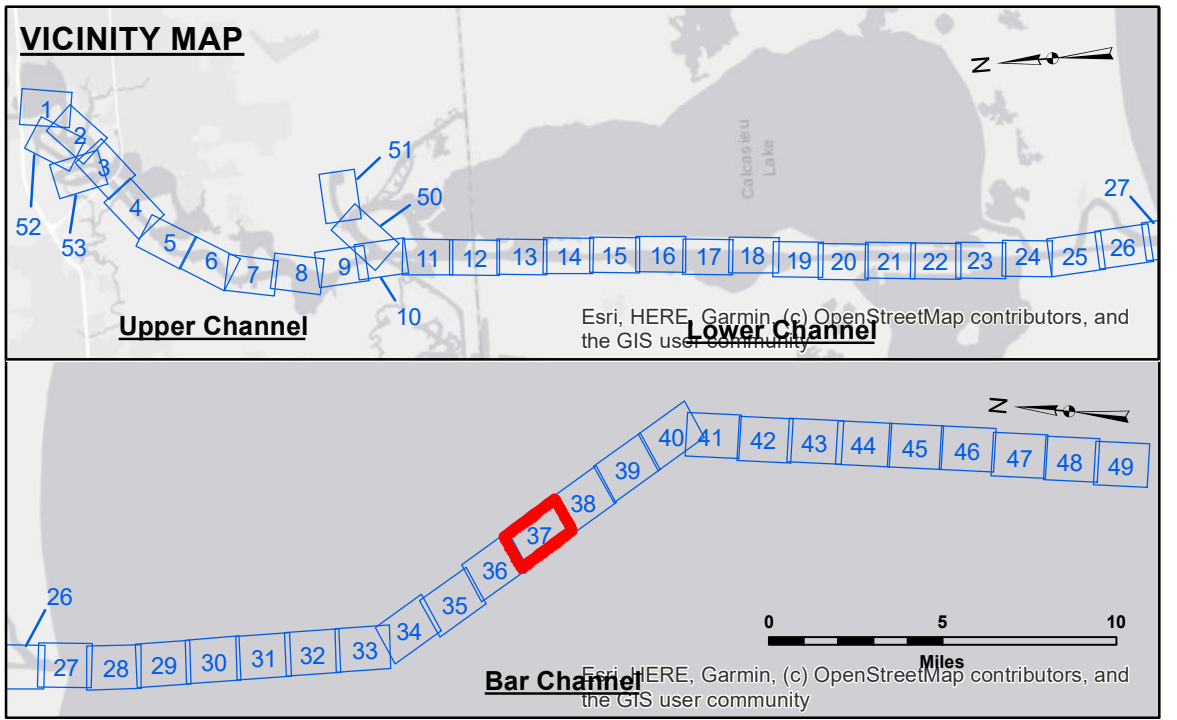


DISCLAIMER
Access, Copiers, etc. The United States Government furnishes these data and the recipient accepts and uses them with the express understanding that the data are not to be used for any purpose other than that for which they were originally intended. The user is responsible for the results of any use of the data for any purpose other than that for which they were originally intended. The user is responsible for the results of any use of the data for any purpose other than that for which they were originally intended. The user is responsible for the results of any use of the data for any purpose other than that for which they were originally intended.

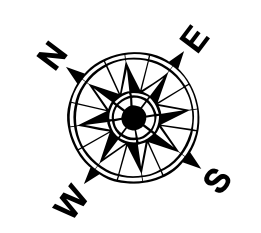
Submitted:	Surveyed By: SPPS
Recommended: Chief, Survey Section	Plotted By: BD
Approved: Chief, Waterways Maintenance Section	Checked By: JH/AO

U.S. ARMY CORPS OF ENGINEERS
NEW ORLEANS DISTRICT
CALCASIEU SHIP CHANNEL
BAR SHEET 37
CR_37_BAR_20220810_CS
10 August 2022

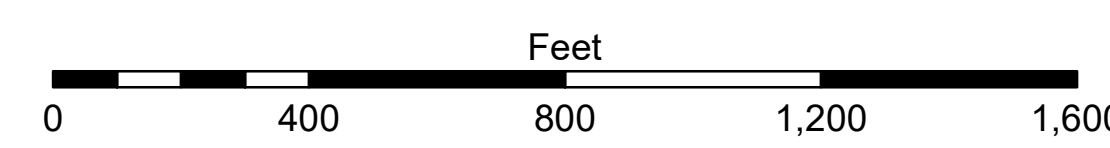
Sheet Reference Number
37 of 53



LEGEND		Fluff Thickness (feet)*	
--- Federal Navigation Channel	○ Cable Area	Red	-16' and above
— Federal Navigation Center Line	□ Placement Area	Orange	-16' to -21'
— As-built Pipeline/Cable	□ Anchorage Area	Yellow	-21' to -26'
..... Unconfirmed Pipeline/Cable	⊗ Obstruction Point	Light Green	-26' to -33'
— Project Depth Contour	⚓ Wrecks-Submerged	Green	-33' to -39'
	★ Beacon, General	Light Blue	-39' to -41'
	◆ Red Navigation Buoy	Dark Blue	-41' to -43'
	◆ Green Navigation Buoy	Lightest Blue	-43' and below
	3		Fluff Thickness (feet)*
	●		Shoalest Sounding**



Gage Reading: 2.31 MLLW AVG.
Sea Conditions: CALM
Vessel Name: MV LAFOURCHE
Survey Type: CONDITION
Sounding Frequency***: LOW



NOTES:
Horizontal Coordinate System: North American Datum of 1983 (NAD83), projected to the State Plane Coordinate System (SPCS), Louisiana South Zone. Distance units in U.S. Survey Feet.
Vertical Datum: Soundings are shown in feet and indicate depths below Mean Lower Low Water Datum (MLLW). Datum Relationships for gage 73650 as of December 2013: 0.0' NAVD88 (2009.55) = 1.3' MLLW = 2.3' MLG or 0.0' MLLW = 1.0' MLG
Distances on the Calcasieu River are shown at 1 mile intervals.
The location of navigation aids are based on and provided by the U.S. Coast Guard and USACE survey crews.
2015 Aerial Photography data source: NAIP
Reference is N.O.A. Navigation Chart No. 11339.
* Difference between high and low frequency elevations where greater than 1.0'.
** Shoalest Sounding per Quarter per Reach.
*** High frequency (200 kHz) survey data represents the first signal return at a sounding location and will include suspended solids, known as "fluff", if present. Low frequency (20 kHz) survey data normally penetrates through this "fluff" layer to depict elevations of consolidated bottom material. Low frequency accuracies may vary depending on channel conditions and fathometer settings.