

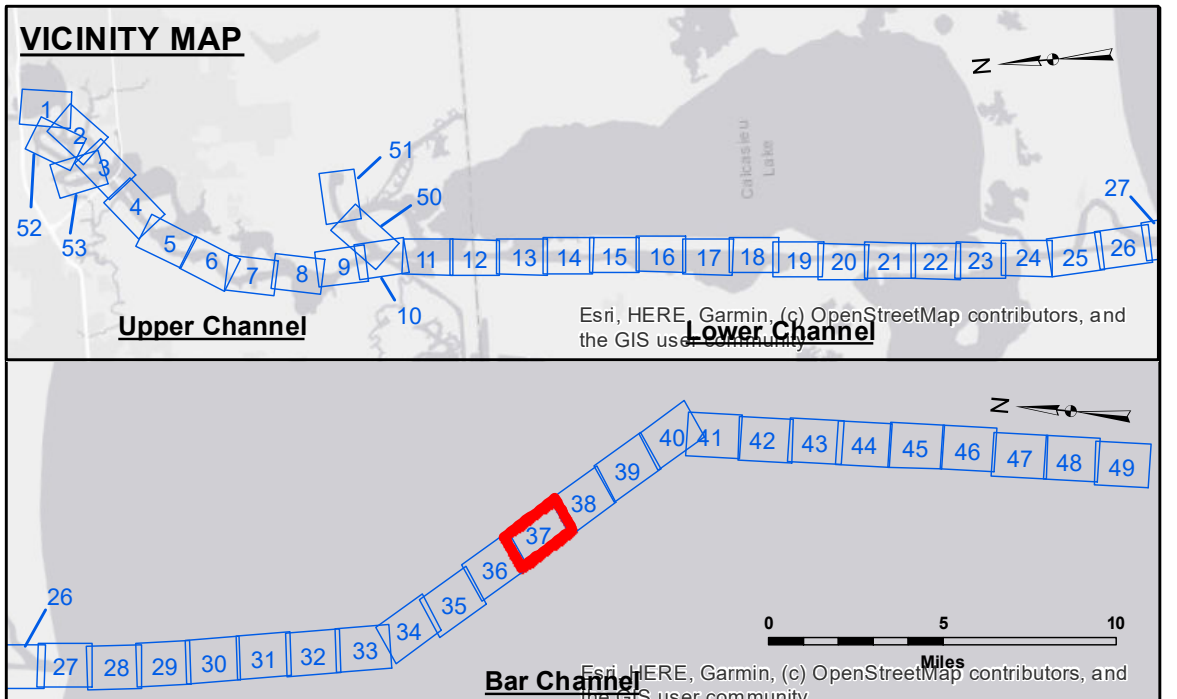
US Army Corps of Engineers
District: CEMVN

Accession Notice: The United States Government furnishes these data and the recipient accepts and uses them with the express understanding that they are for official use only and are not to be retransmitted, copied, or otherwise used in any way for purposes other than those for which they were prepared. The user is responsible for the accuracy, completeness, readability, usability or suitability for any particular purpose of the information received. These data were prepared by the United States Army Corps of Engineers, District of New Orleans, and are the property of the United States Government. These data are being furnished to you under a license which does not constitute an assignment of title. The recipient may not transfer these data to others without the approval of the District Engineer. The information depicted on this map represents the results of a hydrographic survey conducted during the period indicated. It is not to be used for navigation purposes. The user is responsible for the accuracy, completeness, readability, usability or suitability for any particular purpose of the information received.

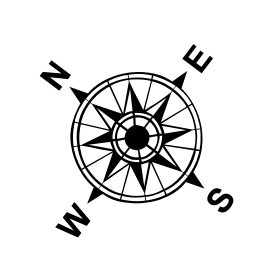
Submitted:	SP-JS	Surveyed By:
Recommended:	AO	Plotted By:
Approved:	BD	Checked By:

U.S. ARMY CORPS OF ENGINEERS
NEW ORLEANS DISTRICT

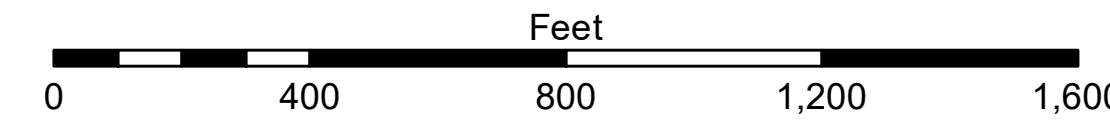
CALCASIEU SHIP CHANNEL
BAR SHEET 37
CR_37_BAR_20231116_CS
16 November 2023



LEGEND		
--- Federal Navigation Channel	● Cable Area	3 Fluff Thickness (feet)*
— Federal Navigation Center Line	□ Placement Area	● Shoalest Sounding**
— As-built Pipeline/Cable	□ Anchorage Area	★ Beacon, General
..... Unconfirmed Pipeline/Cable	⊗ Obstruction Point	◆ Red Navigation Buoy
— Project Depth Contour	⚓ Wrecks-Submerged	◆ Green Navigation Buoy



Gage Reading: CAMERON: 1.0 MLLW AVG
Sea Conditions: CHOPPY
Vessel Name: MV TECHE
Survey Type: CONDITION
Sounding Frequency***: LOW



NOTES:
Horizontal Coordinate System: North American Datum of 1983 (NAD83), projected to the State Plane Coordinate System (SPCS), Louisiana South Zone. Distance units in U.S. Survey Feet.

Vertical Datum: Soundings are shown in feet and indicate depths below Mean Lower Low Water Datum (MLLW). Datum Relationships for gage 73650 as of December 2013: 0.0' NAVD88 (2009.55) = 1.3' MLLW = 2.3' MLG or 0.0' MLLW = 1.0' MLG

Distances on the Calcasieu River are shown at 1 mile intervals. The location of navigation aids are based on and provided by the U.S. Coast Guard and USACE survey crews.

2015 Aerial Photography data source: NAIP
Reference is N.O.A.A. Navigation Chart No. 11339.

* Difference between high and low frequency elevations where greater than 1.0'.
** Shoalest Sounding per Quarter per Reach.

*** High frequency (200 kHz) survey data represents the first signal return at a sounding location and will include suspended solids, known as "fluff", if present. Low frequency (20 kHz) survey data normally penetrates through this "fluff" layer to depict elevations of consolidated bottom material. Low frequency accuracies may vary depending on channel conditions and fathometer settings.

Sheet Reference Number
37 of 53