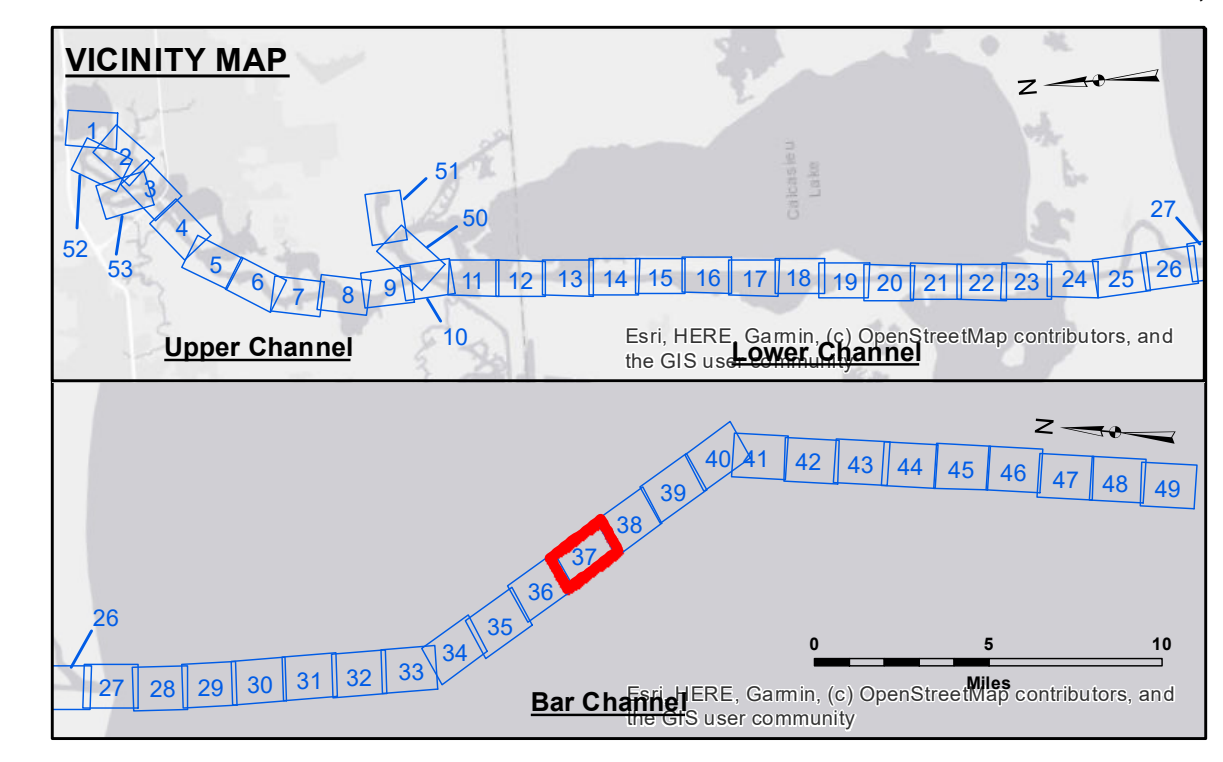
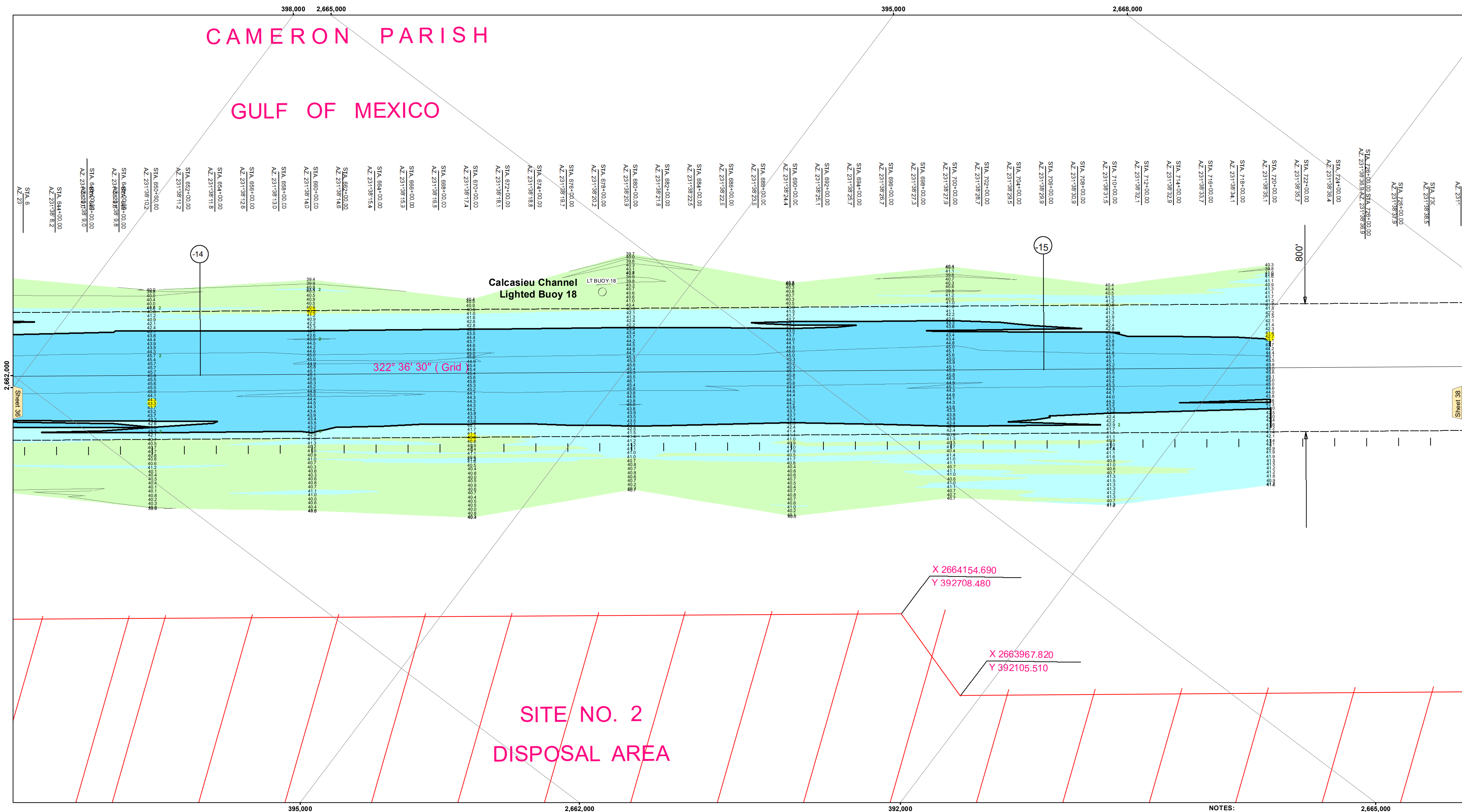
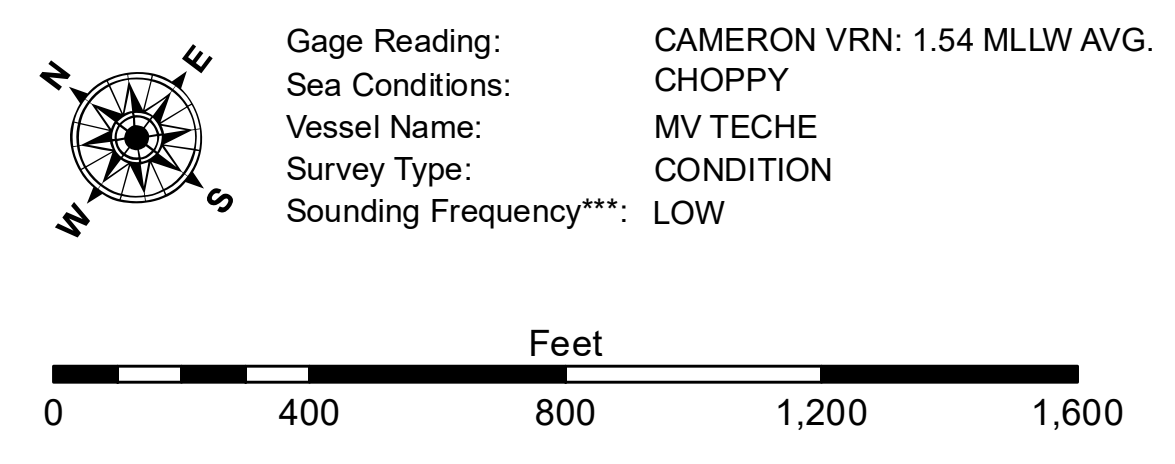


# CAMERON PARISH GULF OF MEXICO



LEGEND	
--- Federal Navigation Channel	● Cable Area
— Federal Navigation Center Line	□ Placement Area
— As-built Pipeline/Cable	□ Anchorage Area
..... Unconfirmed Pipeline/Cable	⊗ Obstruction Point
— Project Depth Contour	⚓ Wrecks-Submerged
3 Fluff Thickness (feet)*	★ Beacon, General
● Shoalest Sounding**	◆ Red Navigation Buoy
● Green Navigation Buoy	



**NOTES:**  
 Horizontal Coordinate System: North American Datum of 1983 (NAD83), projected to the State Plane Coordinate System (SPCS), Louisiana South Zone. Distance units in U.S. Survey Feet.  
 Vertical Datum: Soundings are shown in feet and indicate depths below Mean Lower Low Water Datum (MLLW). Datum Relationships for gage 73650 as of December 2013: 0.0' NAVD88 (2009.55) = 1.3' MLLW = 2.3' MLG or 0.0' MLLW = 1.0' MLG  
 Distances on the Calcasieu River are shown at 1 mile intervals.  
 The location of navigation aids are based on and provided by the U.S. Coast Guard and USACE survey crews.  
 2015 Aerial Photography data source: NAIP  
 Reference is N.O.A.A. Navigation Chart No. 11339.  
 \* Difference between high and low frequency elevations where greater than 1.0'.  
 \*\* Shoalest Sounding per Quarter per Reach.  
 \*\*\* High frequency (200 kHz) survey data represents the first signal return at a sounding location and will include suspended solids, known as "fluff", if present. Low frequency (20 kHz) survey data normally penetrates through this "fluff" layer to depict elevations of consolidated bottom material. Low frequency accuracies may vary depending on channel conditions and fathometer settings.



**DISCLAIMER:**  
 The United States Government furnishes these data and the recipient accepts and uses them with the express understanding that the Government makes no warranty, expressed, implied, or otherwise, concerning the accuracy, completeness, reliability, usability, or suitability for any particular purpose of the information. The user is responsible for the manner in which the information is used. The Government assumes no liability for any use of the information under any liability whatsoever to any person by reason of any use of the information. These data are being made available to the public under the authority of the U.S. Government. The recipient may not transfer these data to others without obtaining the District's approval. The information depicted on this map represents the results of a survey conducted by the United States Army Corps of Engineers to represent the general condition existing at that time.

Submitted:	Surveyed By: SP-JS
Recommended:	Plotted By: BD
Approved:	Checked By: ADJ/H

U.S. ARMY CORPS OF ENGINEERS  
NEW ORLEANS DISTRICT  
Chief, Survey Section  
Chief, Waterways Maintenance Section

**CALCASIEU SHIP CHANNEL  
 BAR SHEET 37  
 CR\_37\_BAR\_20240719\_CS  
 19 July 2024**

**Sheet Reference Number  
 37 of 53**

Revision Number:  
4.2-202/06420