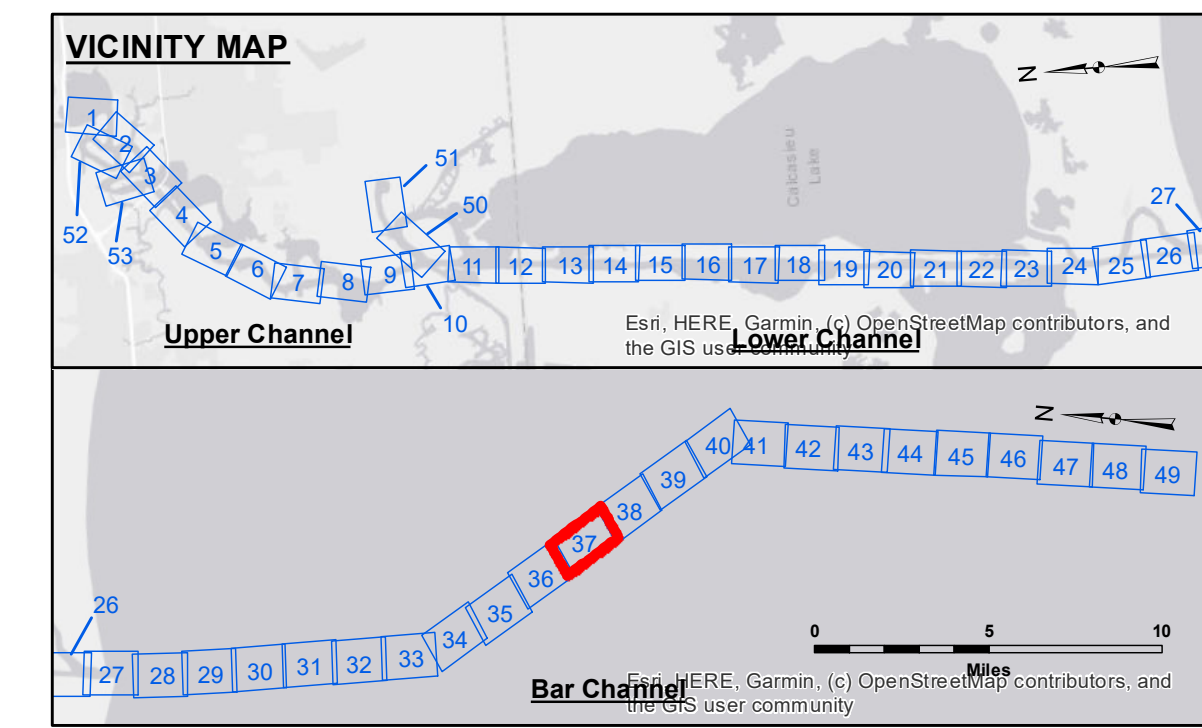
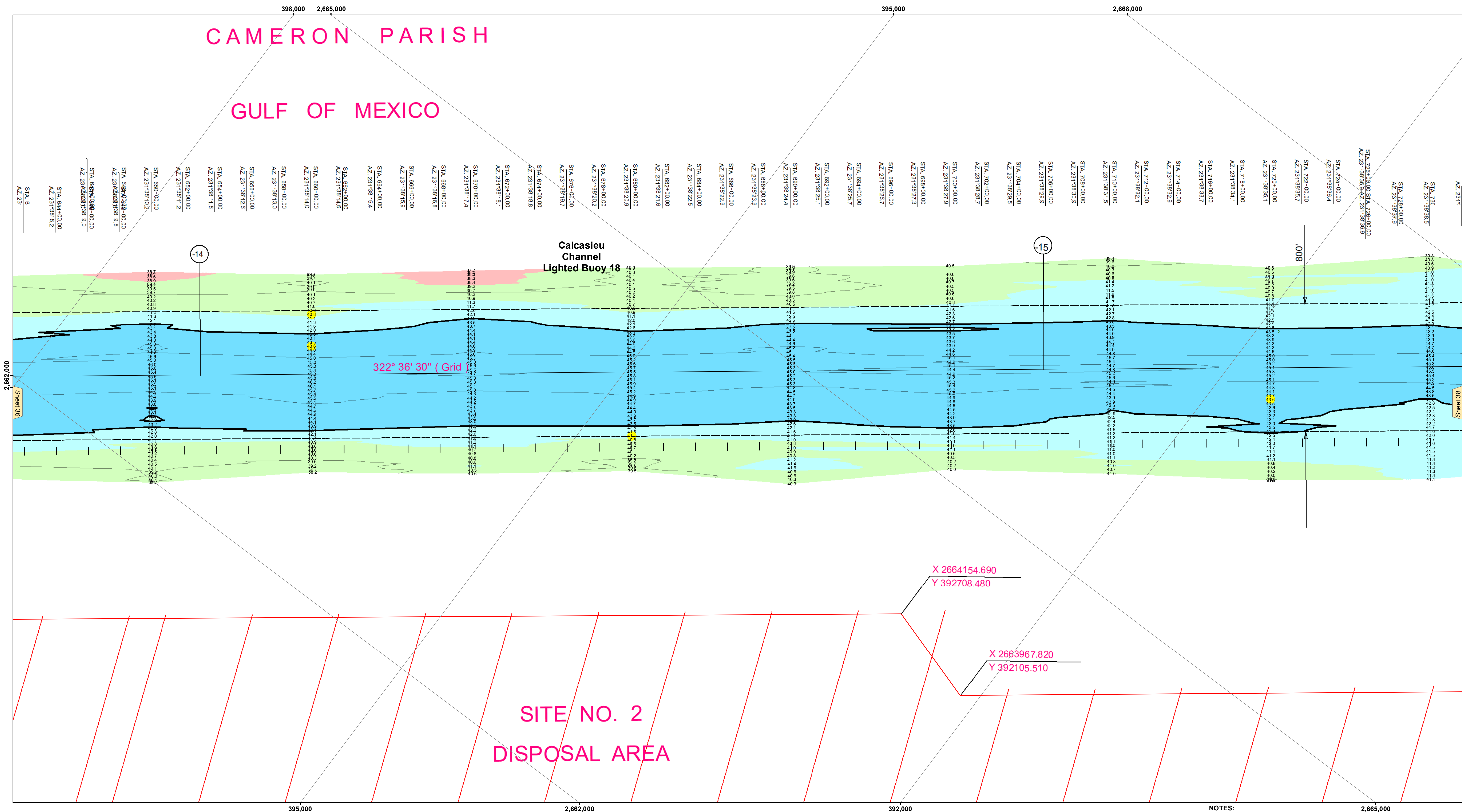
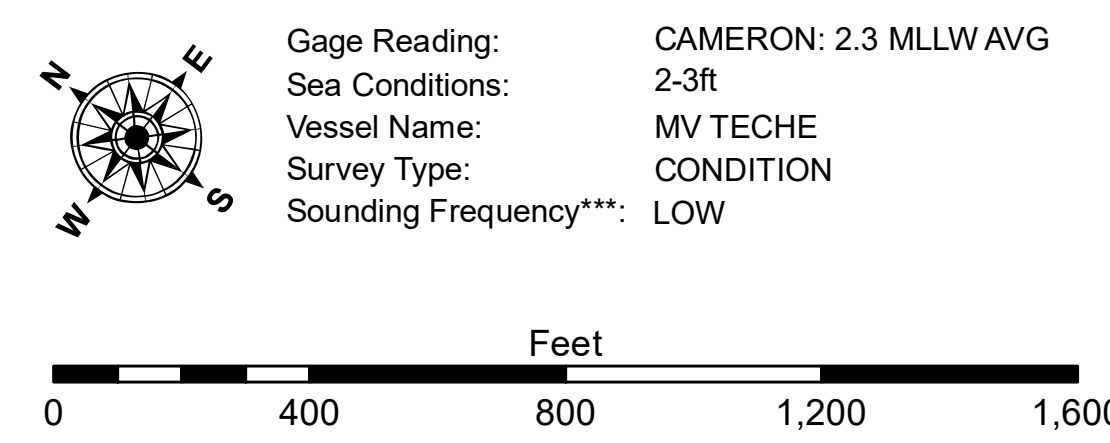


CAMERON PARISH GULF OF MEXICO



LEGEND		
--- Federal Navigation Channel	○ Cable Area	3 Fluff Thickness (feet)*
— Federal Navigation Center Line	□ Placement Area	● Shoalest Sounding**
— As-built Pipeline/Cable	⊗ Anchorage Area	★ Beacon, General
..... Unconfirmed Pipeline/Cable	⊗ Obstruction Point	◆ Red Navigation Buoy
— Project Depth Contour	⊗ Wrecks-Submerged	◆ Green Navigation Buoy



NOTES:
 Horizontal Coordinate System: North American Datum of 1983 (NAD83), projected to the State Plane Coordinate System (SPCS), Louisiana South Zone. Distance units in U.S. Survey Feet.
 Vertical Datum: Soundings are shown in feet and indicate depths below Mean Lower Low Water Datum (MLLW). Datum Relationships for gage 73650 as of December 2013: 0.0' NAVD88 (2009.55) = 1.3' MLLW = 2.3' MLG or 0.0' MLLW = 1.0' MLG
 Distances on the Calcasieu River are shown at 1 mile intervals.
 The location of navigation aids are based on and provided by the U.S. Coast Guard and USACE survey crews.
 2015 Aerial Photography data source: NAIP
 Reference is N.O.A.A. Navigation Chart No. 11339.
 * Difference between high and low frequency elevations where greater than 1.0'.
 ** Shoalest Sounding per Quarter per Reach.
 *** High frequency (200 kHz) survey data represents the first signal return at a sounding location and will include suspended solids, known as "fluff", if present. Low frequency (20 kHz) survey data normally penetrates through this "fluff" layer to depict elevations of consolidated bottom material. Low frequency accuracies may vary depending on channel conditions and fathometer settings.



DISCLAIMER:
 The information depicted on this map represents the results of a survey conducted by the United States Army Corps of Engineers. It is not intended to be used for any purpose other than that for which it was prepared. The user is responsible for the accuracy, completeness, reliability, usability, or suitability for any particular purpose of the information. The user is advised to consult the appropriate technical specifications and standards for the information. The user is advised to consult the appropriate technical specifications and standards for the information. The user is advised to consult the appropriate technical specifications and standards for the information. The user is advised to consult the appropriate technical specifications and standards for the information.

Submitted:	PS/KC
Recommended:	JH
Approved:	JH

U.S. ARMY CORPS OF ENGINEERS
NEW ORLEANS DISTRICT
Chief, Waterways Maintenance Section

**CALCASIEU SHIP CHANNEL
 BAR SHEET 37
 CR_37_BAR_20240914_CS_POSTSTORM
 14 September 2024**

**Sheet Reference Number
 37 of 53**