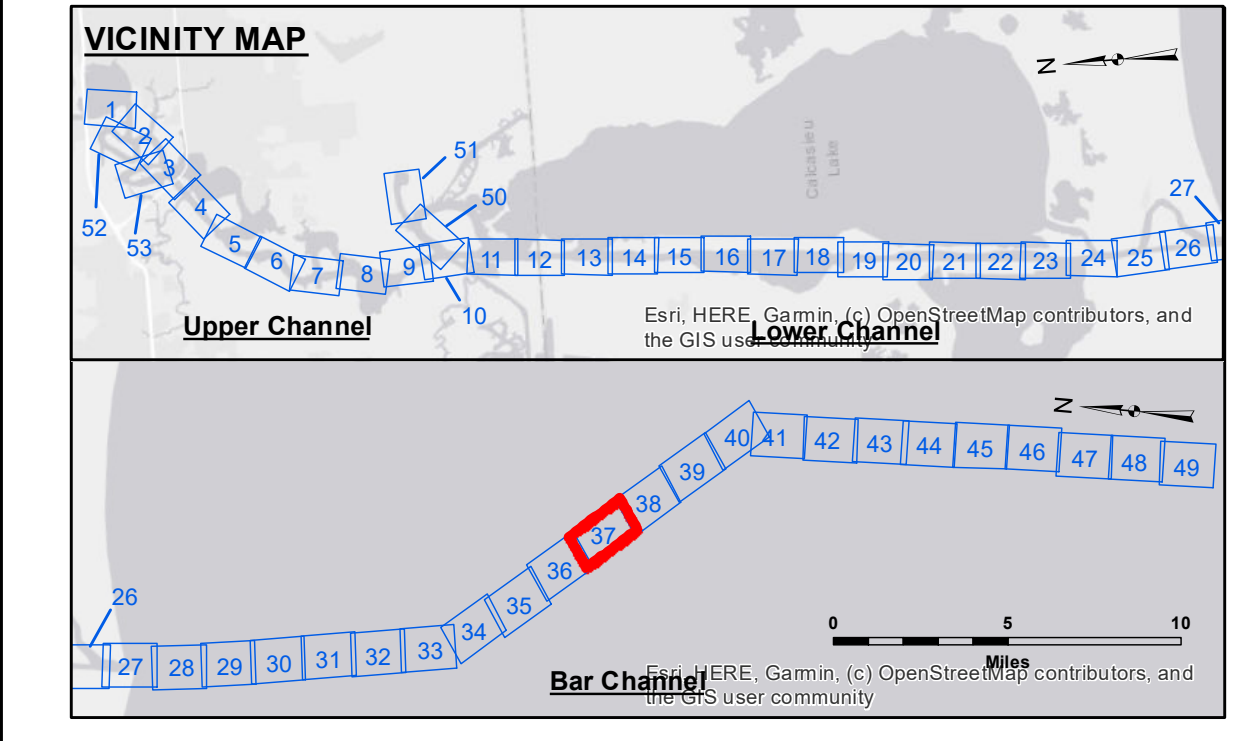
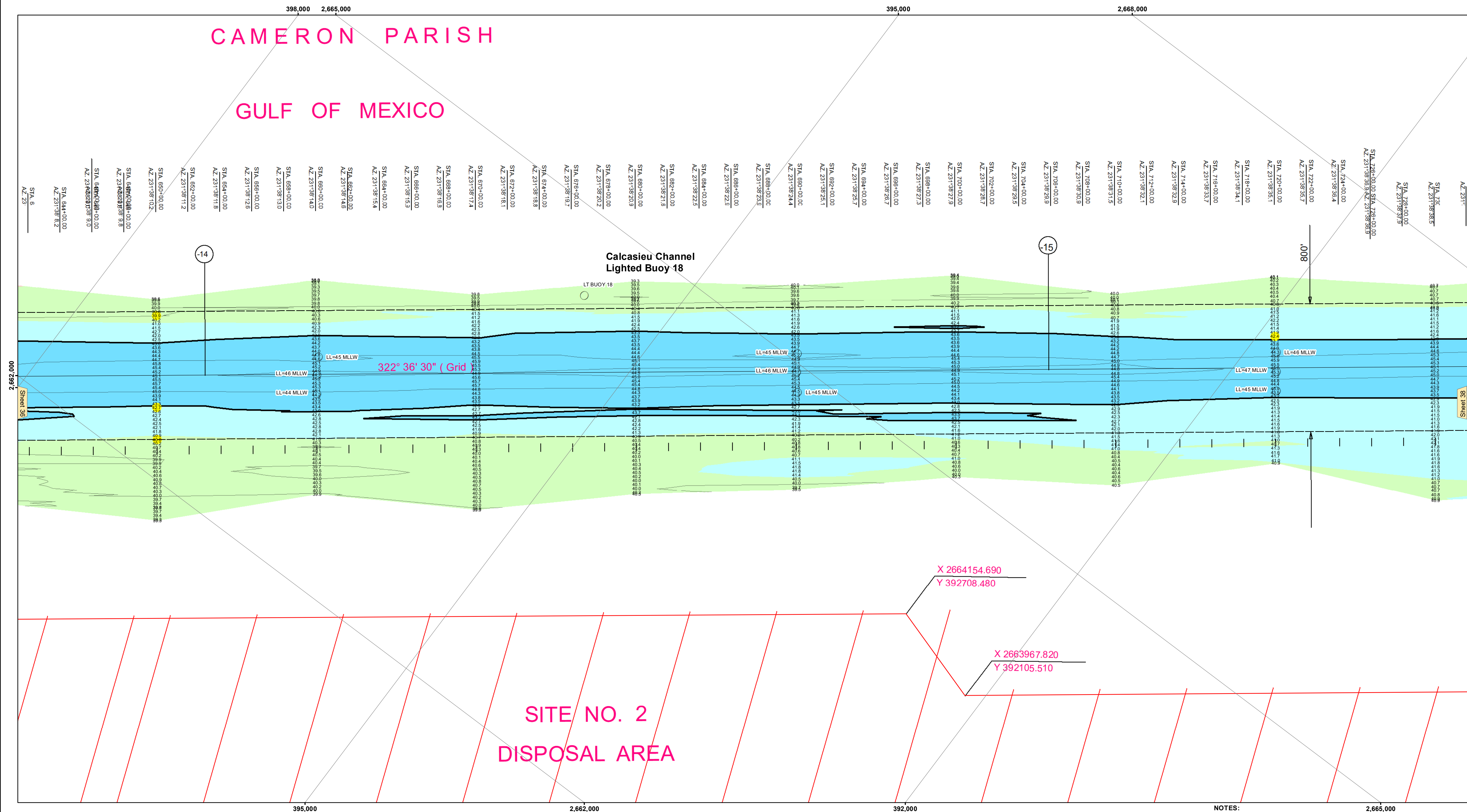
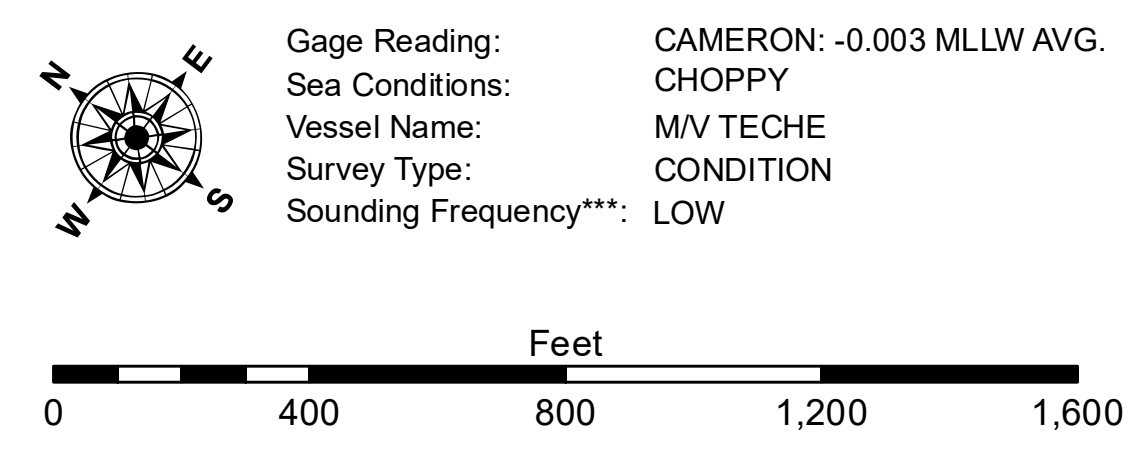


# CAMERON PARISH GULF OF MEXICO



LEGEND			
	Federal Navigation Channel		Placement Area
	Federal Navigation Center Line		Obstruction Point
	As-built Pipeline/Cable		Wrecks-Submerged
	Unconfirmed Pipeline/Cable		Fluff Thickness (feet)*
	Project Depth Contour		Shoalest Sounding**
	Cable Area		Beacon, General
	Anchorage Area		Red Navigation Buoy
	Obstruction Point		Green Navigation Buoy



**NOTES:**  
 Horizontal Coordinate System: North American Datum of 1983 (NAD83), projected to the State Plane Coordinate System (SPCS), Louisiana South Zone. Distance units in U.S. Survey Feet.  
 Vertical Datum: Soundings are shown in feet and indicate depths below Mean Lower Low Water Datum (MLLW). Datum Relationships for gage 73650 as of December 2013: 0.0' NAVD88 (2009.55) = 1.3' MLLW = 2.3' MLG or 0.0' MLLW = 1.0' MLG  
 Distances on the Calcasieu River are shown at 1 mile intervals.  
 The location of navigation aids are based on and provided by the U.S. Coast Guard and USACE survey crews.  
 2015 Aerial Photography data source: NAIP  
 Reference is N.O.A.A. Navigation Chart No. 11339.  
 \* Difference between high and low frequency elevations where greater than 1.0'.  
 \*\* Shoalest Sounding per Quarter per Reach.  
 \*\*\* High frequency (200 kHz) survey data represents the first signal return at a sounding location and will include suspended solids, known as "fluff", if present. Low frequency (20 kHz) survey data normally penetrates through this "fluff" layer to depict elevations of consolidated bottom material. Low frequency accuracies may vary depending on channel conditions and fathometer settings.



**DISCLAIMER:**  
 The United States Government furnishes these data and the recipient accepts and uses them with the express understanding that the Government makes no warranty, expressed, implied, or otherwise, concerning the accuracy, completeness, reliability, usability, or suitability for any particular purpose of the information. The user is responsible for the manner in which the information is used. The Government is not liable for any damages, including but not limited to, direct, indirect, or consequential damages, arising from the use of the information. The information is provided as is and the user assumes all responsibility for the use of the information. The information is provided for informational purposes only and is not intended to be used for any other purpose. The information is provided for informational purposes only and is not intended to be used for any other purpose. The information is provided for informational purposes only and is not intended to be used for any other purpose.

Submitted:	SP-JS
Recommended:	BD
Checked:	AO/H
Approved:	

**CALCASIEU SHIP CHANNEL  
 BAR SHEET 37  
 CR\_37\_BAR\_20241217\_CS  
 17 December 2024**

**Sheet Reference Number  
 37 of 53**