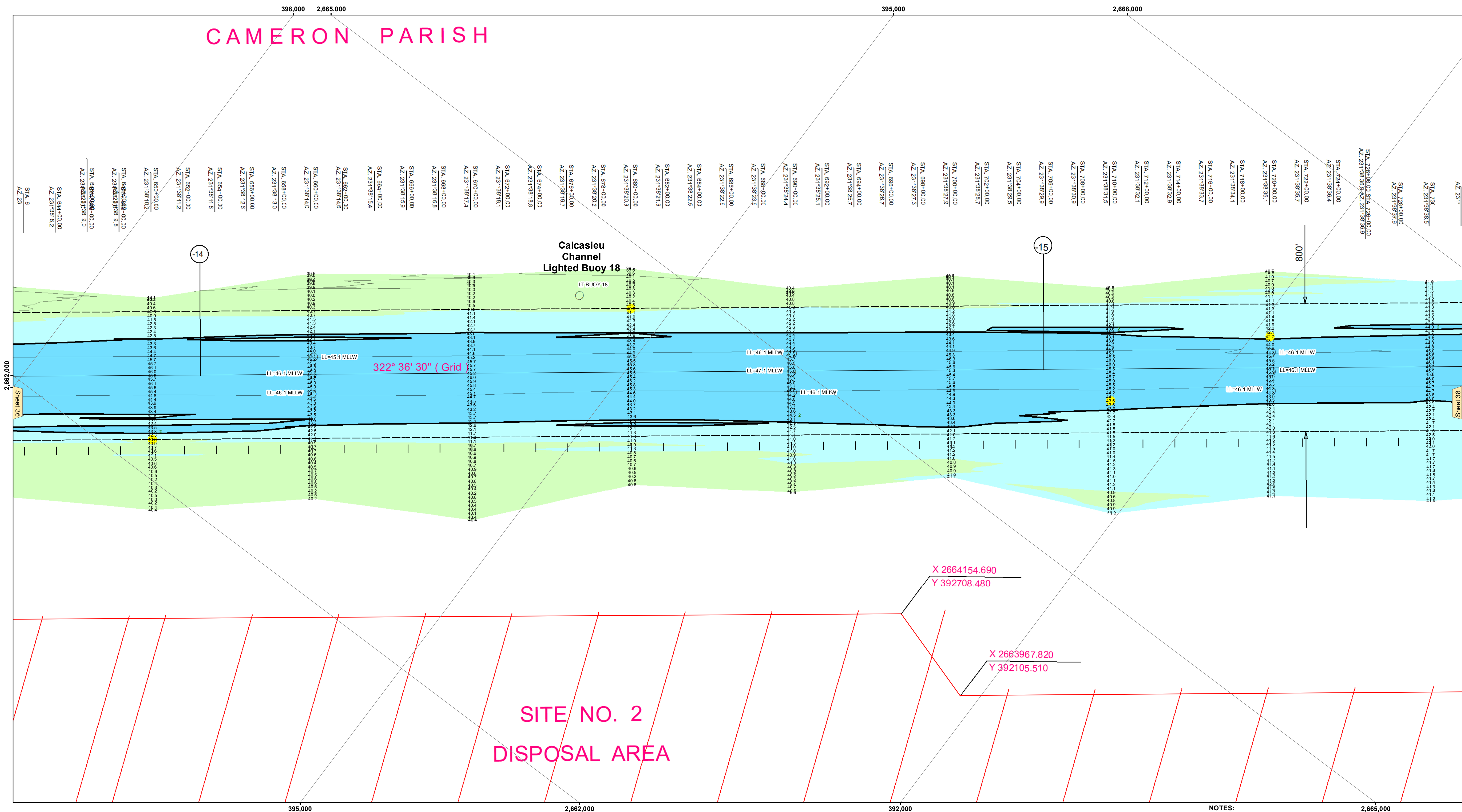


CAMERON PARISH



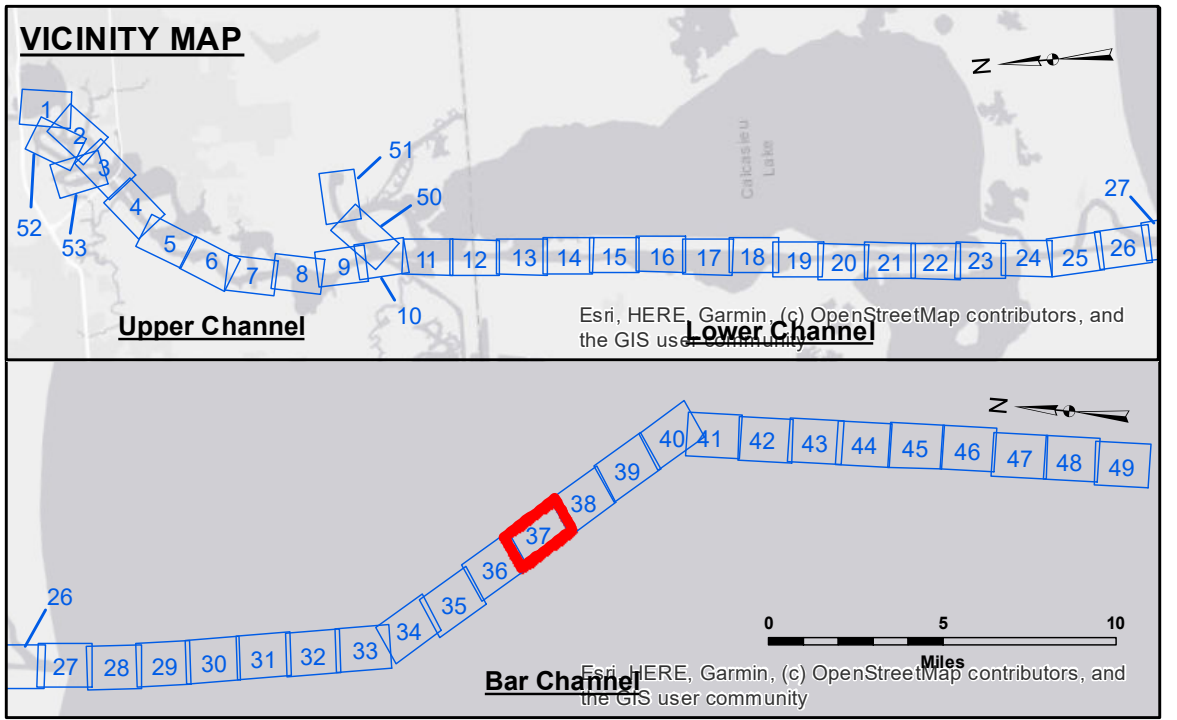
US Army Corps of Engineers District: CEMVN

DISCLAIMER
 The information depicted on this map represents the results of a hydrographic survey conducted by the U.S. Army Corps of Engineers. The data is intended for use in navigation and is not to be used for any other purpose. The user is responsible for the accuracy, completeness, and reliability of the data. The Corps of Engineers does not warrant the accuracy, completeness, or reliability of the data for any purpose other than navigation. The Corps of Engineers is not responsible for any damage or loss resulting from the use of this data. The information depicted on this map represents the results of a hydrographic survey conducted by the U.S. Army Corps of Engineers. The data is intended for use in navigation and is not to be used for any other purpose. The user is responsible for the accuracy, completeness, and reliability of the data. The Corps of Engineers does not warrant the accuracy, completeness, or reliability of the data for any purpose other than navigation. The Corps of Engineers is not responsible for any damage or loss resulting from the use of this data.

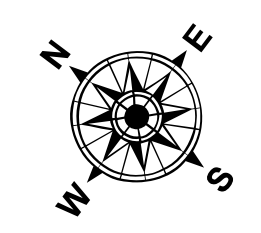
Submitted:	SP-JS	Plotted By:	BD	Checked By:	AD/JH
Recommended:	Chief, Survey Section	Approved:	Chief, Waterways Maintenance Section		

U.S. ARMY CORPS OF ENGINEERS
NEW ORLEANS DISTRICT

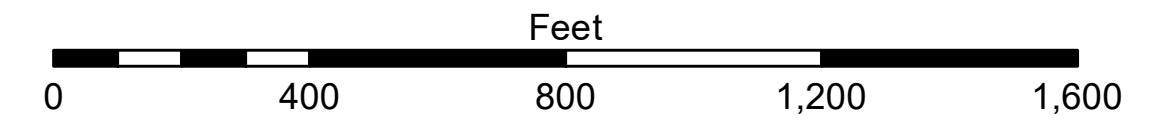
CALCASIEU SHIP CHANNEL
BAR SHEET 37
CR_37_BAR_20250311_CS
11 March 2025



LEGEND		Color Key	
--- Federal Navigation Channel	● Cable Area	Red	-16' and above
— Federal Navigation Center Line	□ Placement Area	Orange	-16' to -21'
— As-built Pipeline/Cable	□ Anchorage Area	Yellow	-21' to -26'
..... Unconfirmed Pipeline/Cable	⊗ Obstruction Point	Light Green	-26' to -33'
— Project Depth Contour	⚓ Wrecks-Submerged	Green	-33' to -39'
	★ Beacon, General	Light Blue	-39' to -41'
	◆ Red Navigation Buoy	Blue	-41' to -43'
	◆ Green Navigation Buoy	Dark Blue	-43' and below
	3 Fluff Thickness (feet)*		
	● Shoalest Sounding**		



Gage Reading: CAMERON VRN: -0.11 MLLW AVG.
 Sea Conditions: CHOPPY
 Vessel Name: M/V TECHE
 Survey Type: CONDITION
 Sounding Frequency***: LOW



NOTES:
 Horizontal Coordinate System: North American Datum of 1983 (NAD83), projected to the State Plane Coordinate System (SPCS), Louisiana South Zone. Distance units in U.S. Survey Feet.
 Vertical Datum: Soundings are shown in feet and indicate depths below Mean Lower Low Water Datum (MLLW). Datum Relationships for gage 73650 as of December 2013: 0.0' NAVD88 (2009.55) = 1.3' MLLW = 2.3' MLG or 0.0' MLLW = 1.0' MLG
 Distances on the Calcasieu River are shown at 1 mile intervals.
 The location of navigation aids are based on and provided by the U.S. Coast Guard and USACE survey crews.
 2015 Aerial Photography data source: NAIP
 Reference is N.O.A.A. Navigation Chart No. 11339.
 * Difference between high and low frequency elevations where greater than 1.0'.
 ** Shoalest Sounding per Quarter per Reach.
 *** High frequency (200 kHz) survey data represents the first signal return at a sounding location and will include suspended solids, known as "fluff", if present. Low frequency (20 kHz) survey data normally penetrates through this "fluff" layer to depict elevations of consolidated bottom material. Low frequency accuracies may vary depending on channel conditions and fathometer settings.

Sheet Reference Number
37 of 53