

Division Liability: The data represents the best of our knowledge and belief, but does not constitute a warranty or guarantee of accuracy. The user is responsible for the accuracy of the data for their intended purpose. The user is responsible for the accuracy of the data for their intended purpose. The user is responsible for the accuracy of the data for their intended purpose.

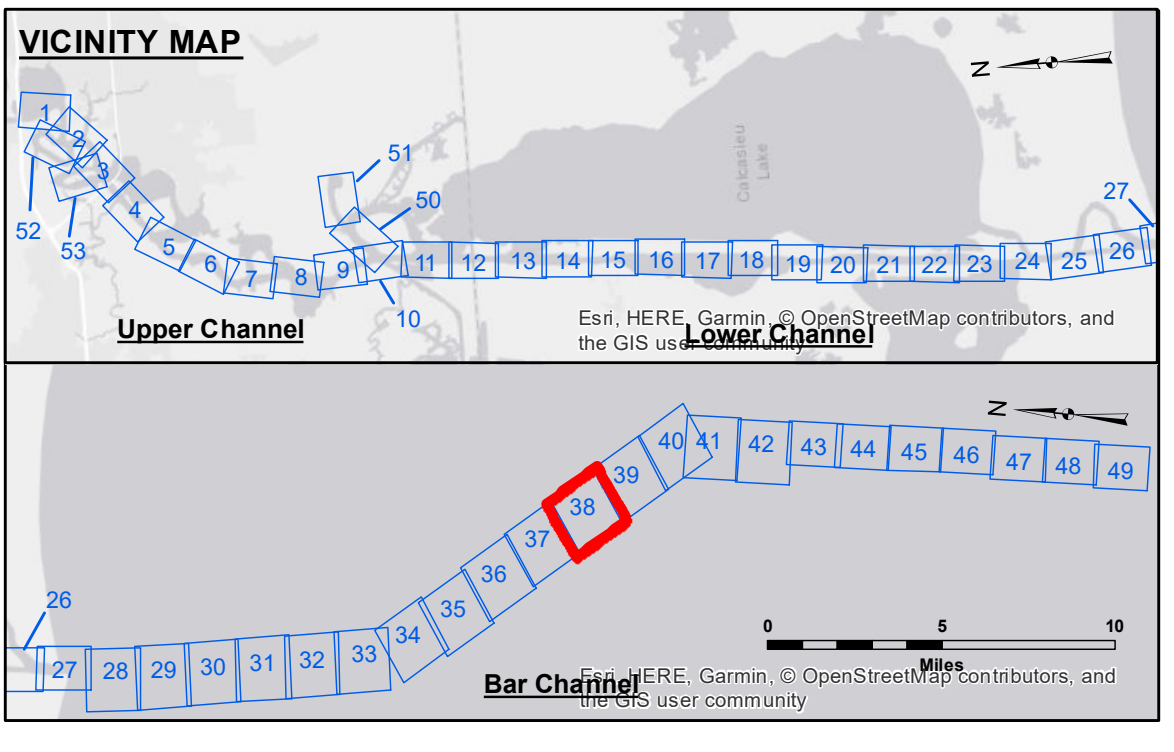
Submitted:	SR, JH
Recommended:	BD
Checked By:	AO

U.S. ARMY CORPS OF ENGINEERS  
NEW ORLEANS DISTRICT

**CALCASIEU SHIP CHANNEL  
BAR SHEET 38  
CR\_38\_BARX\_20171114\_CS  
14 November 2017**

Sheet Reference Number  
**38 of 53**

Revision Number:  
313-2016011



LEGEND	
--- Federal Navigation Channel	● Cable Area
— Federal Navigation Center Line	■ Placement Area
— As-built Pipeline/Cable	□ Anchorage Area
--- Unconfirmed Pipeline/Cable	⊗ Obstruction Point
— Project Depth Contour	⚓ Wrecks-Submerged
3 Fluff Thickness (feet)*	★ Beacon, General
● Shoalest Sounding**	★ Red Navigation Buoy
★ Beacon, General	◆ Green Navigation Buoy

Gage Reading: CAMERON: 2.41 MLLW  
Sea Conditions: 2-3'  
Vessel Name: M/V TECHE  
Survey Type: CONDITION  
Sounding Frequency\*\*\*: LOW

Vertical Datum:  
Soundings are shown in feet and indicate depths below Mean Lower Low Water Datum (MLLW).  
Datum Relationships for page 73650 as of December 2013:  
0.0' NAVD88 (2009.55) = 1.3' MLLW = 2.3' MLG or 0.0' MLLW = 1.0' MLG

Distances on the Calcasieu River are shown at 1 mile intervals.

The location of navigation aids are based on and provided by the U.S. Coast Guard and USACE survey crews.

2015 Aerial Photography data source: NAIP  
Reference is N.O.A. Navigation Chart No. 11339.

\* Difference between high and low frequency elevations where greater than 1.0'.  
\*\* Shoalest Sounding per Quarter per Reach.  
\*\*\* High frequency (200 kHz) survey data represents the first signal return at a sounding location and will include suspended solids, known as "fluff", if present. Low frequency (20 kHz) survey data normally penetrates through this "fluff" layer to depict elevations of consolidated bottom material. Low frequency accuracies may vary depending on channel conditions and fathometer settings.

