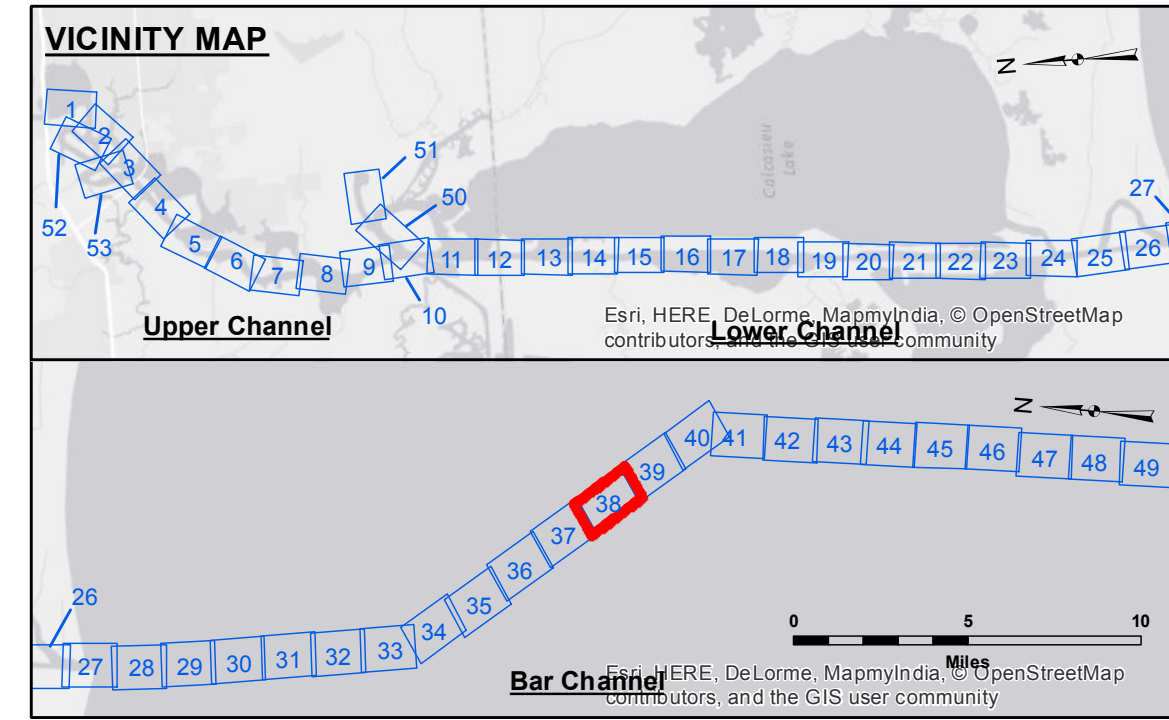
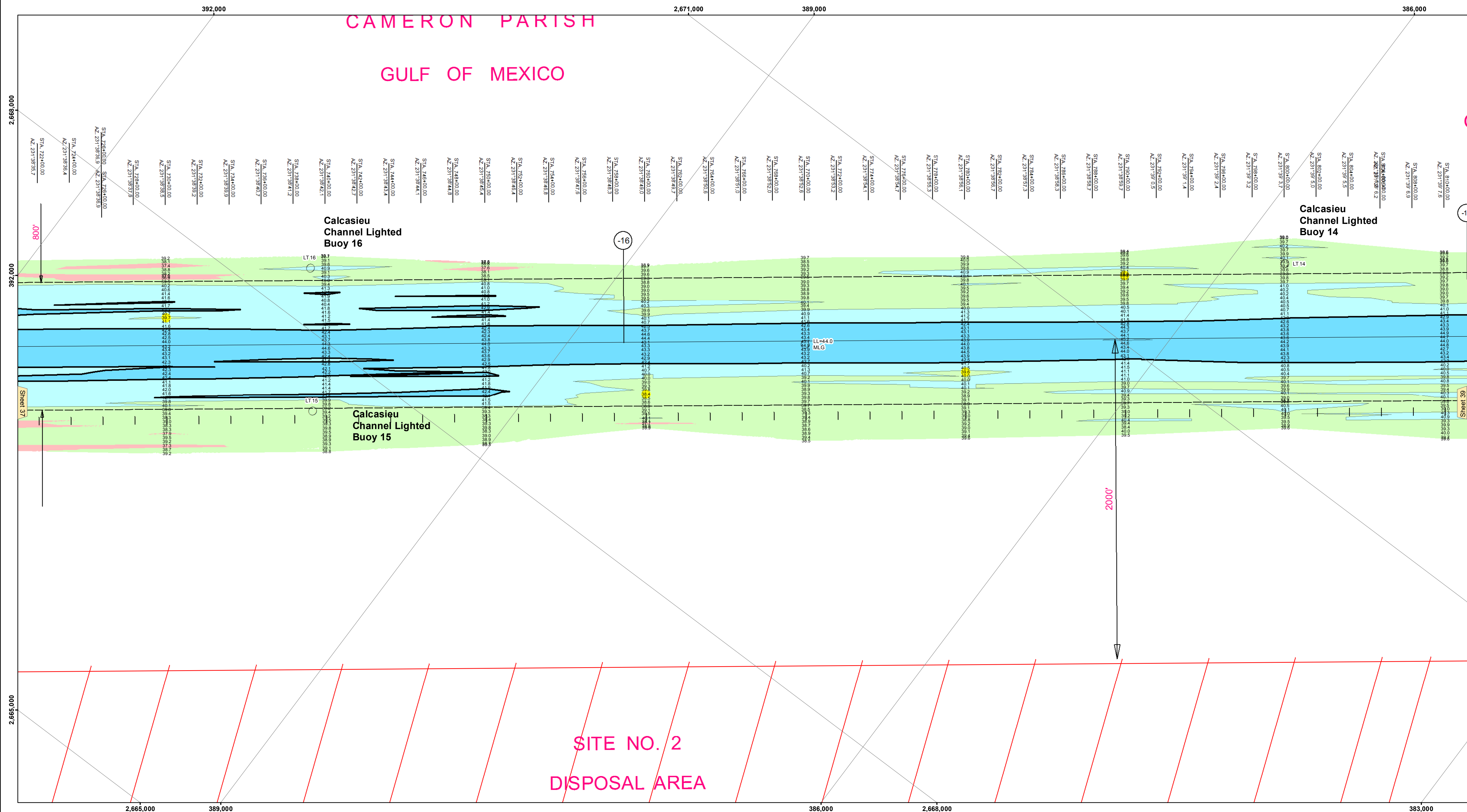


CAMERON PARISH  
GULF OF MEXICO



**LEGEND**

|                                  |                     |                         |                  |
|----------------------------------|---------------------|-------------------------|------------------|
| --- Federal Navigation Channel   | ● Cable Area        | □ Borrow Area           | ■ -15' and above |
| — Federal Navigation Center Line | □ Placement Area    | ● Shoalest Sounding**   | ■ -15' to -20'   |
| — As-built Pipeline/Cable        | □ Anchorage Area    | ★ Beacon, General       | ■ -20' to -25'   |
| ..... Unconfirmed Pipeline/Cable | ⊗ Obstruction Point | ◆ Red Navigation Buoy   | ■ -25' to -32'   |
| — Project Depth Contour          | ⚓ Wrecks-Submerged  | ◆ Green Navigation Buoy | ■ -32' to -38'   |
|                                  |                     |                         | ■ -38' to -40'   |
|                                  |                     |                         | ■ -40' to -42'   |
|                                  |                     |                         | ■ -42' and below |

**NOTES:**

Horizontal Coordinate System:  
North American Datum of 1983 (NAD83), projected to the State Plane Coordinate System (SPCS), Louisiana South Zone. Distance units in U.S. Survey Feet.

Vertical Datum:  
Soundings are shown in feet and indicate depths below Mean Low Gulf Datum (MLG).  
Datum Relationships for gage 73650 as of December 2013:  
0.0' NAVD83 (2009.55) = 1.3' MLLW = 2.3' MLG or 0.0' MLLW = 1.0' MLG

Distances on the Calcasieu River are shown at 1 mile intervals.

The location of navigation aids are base on and provided by the U.S. Coast Guard and USACE survey crews.

2010 Aerial Photography data source: NAIP  
Reference is N.O.A.A. Navigation Chart No. 11339.

\*\* Shoalest Sounding per Quarter per Reach.

\*\*\* High frequency (200 kHz) survey data represents the first signal return at a sounding location and will include suspended solids, known as "fluff", if present. Low frequency (20 kHz) survey data normally penetrates through this "fluff" layer to depict elevations of consolidated bottom material. Low frequency accuracies may vary depending on channel conditions and fathometer settings.



**DISCLAIMER:** The United States Government furnishes these data and the recipient accepts and uses them with the express understanding that the data are not warranted for any purpose other than that for which they were prepared. The user is responsible for the results of any application of the data for other than its intended purpose. The information depicted on this map represents the results of a survey conducted on the date shown and is not considered to represent the general condition existing at that time.

|  |                                      |                    |
|--|--------------------------------------|--------------------|
| U.S. ARMY CORPS OF ENGINEERS<br>NEW ORLEANS DISTRICT |                                      |                    |
| Submitted:   | Surveyed By:<br>SJR,jdh              | Plotted By:<br>BIT |
| Recommended:   | Chief, Survey Section                | Checked By:<br>TAF |
| Approved:  | Chief, Waterways Maintenance Section |                    |

**CALCASIEU SHIP CHANNEL**  
BAR SHEET 38  
CR\_38\_BAR\_20150401  
01 April 2015

**Sheet Reference Number**  
38 of 53