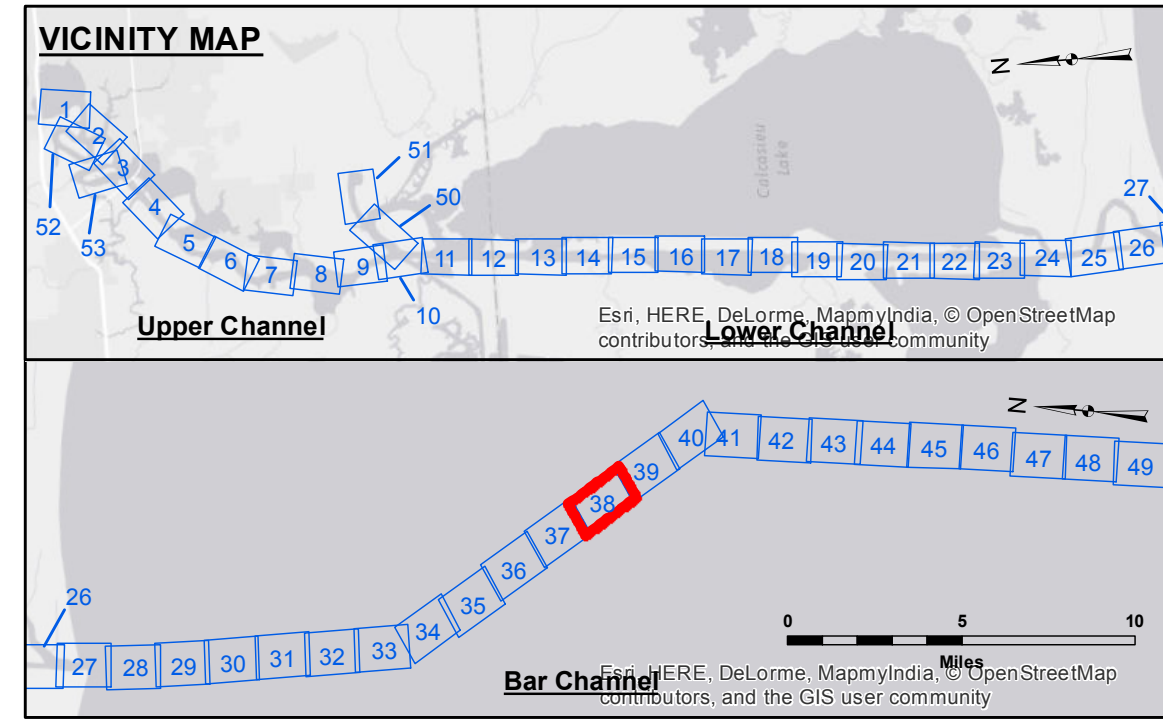
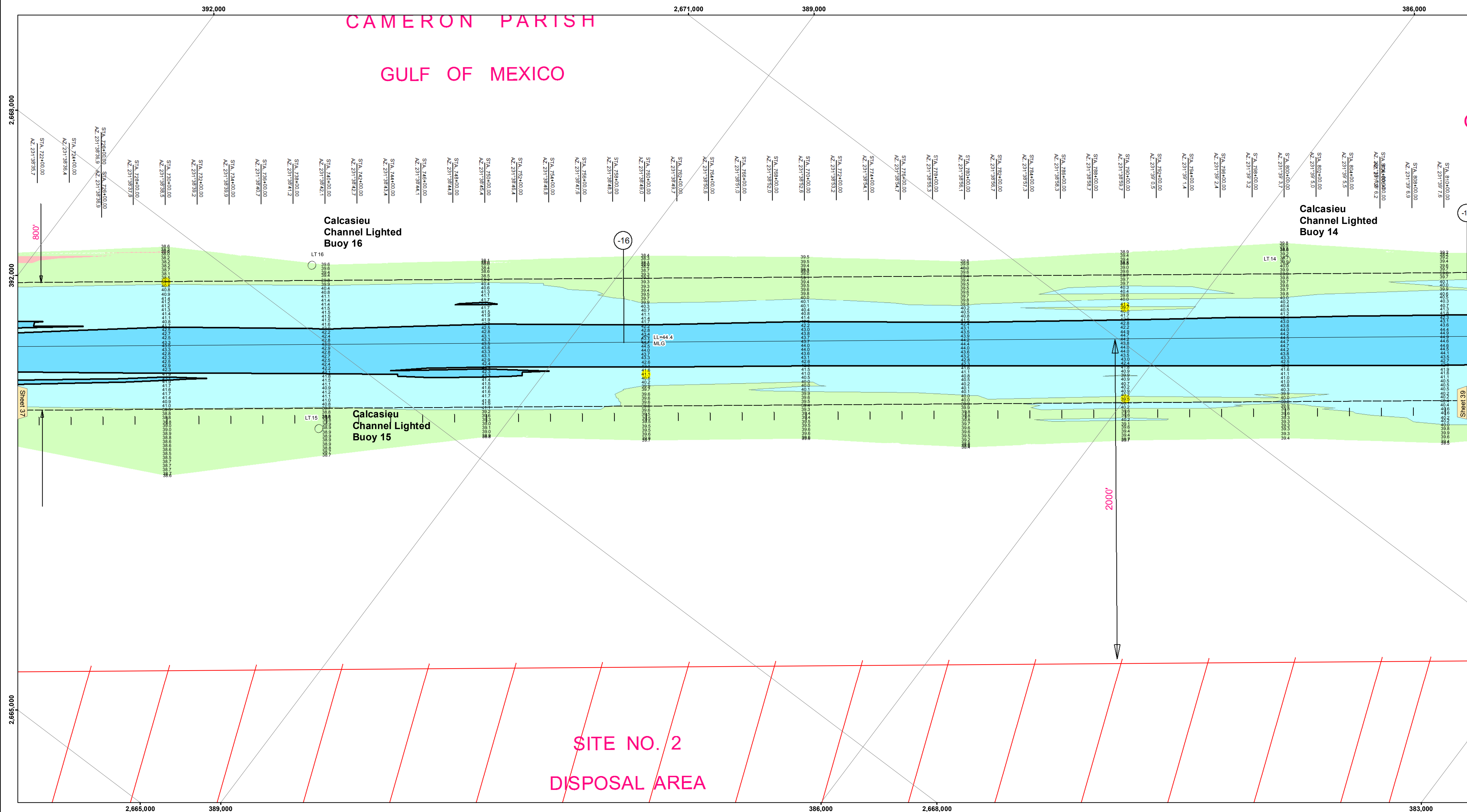


CAMERON PARISH
GULF OF MEXICO



LEGEND

--- Federal Navigation Channel	● Cable Area	□ Borrow Area	■ -15' and above
— Federal Navigation Center Line	□ Placement Area	● Shoalest Sounding**	■ -15' to -20'
— As-built Pipeline/Cable	□ Anchorage Area	★ Beacon, General	■ -20' to -25'
..... Unconfirmed Pipeline/Cable	⊗ Obstruction Point	◆ Red Navigation Buoy	■ -25' to -32'
— Project Depth Contour	⚓ Wrecks-Submerged	◆ Green Navigation Buoy	■ -32' to -38'
			■ -38' to -40'
			■ -40' to -42'
			■ -42' and below

NOTES:

Horizontal Coordinate System:
North American Datum of 1983 (NAD83), projected to the State Plane Coordinate System (SPCS), Louisiana South Zone. Distance units in U.S. Survey Feet.

Vertical Datum:
Soundings are shown in feet and indicate depths below Mean Low Gage Datum (MLG).
Datum Relationships for gage 73650 as of December 2013:
0.0' NAVD83 (2009.55) = 1.3' MLLW = 2.3' MLG or 0.0' MLLW = 1.0' MLG

Distances on the Calcasieu River are shown at 1 mile intervals.

The location of navigation aids are based on and provided by the U.S. Coast Guard and USACE survey crews.

2010 Aerial Photography data source: NAIP
Reference is N.O.A.A. Navigation Chart No. 11339.

** Shoalest Sounding per Quarter per Reach.

*** High frequency (200 kHz) survey data represents the first signal return at a sounding location and will include suspended solids, known as "fluff", if present. Low frequency (20 kHz) survey data normally penetrates through this "fluff" layer to depict elevations of consolidated bottom material. Low frequency accuracies may vary depending on channel conditions and fathometer settings.

Gage Reading: CAMERON: 2.6 MLG AVG
Sea Conditions: CALM
Vessel Name: M/V LAFOURCHE
Survey Type: CONDITION
Sounding Frequency***: LOW



DISCLAIMER:

Access Constraints: The United States Government furnishes these data and the recipient accepts and uses them with the express understanding that the data are not to be used for any purpose other than that for which they were originally prepared, and that the data are not to be used for any purpose other than that for which they were originally prepared, and that the data are not to be used for any purpose other than that for which they were originally prepared.

The information depicted on this map represents the results of a survey conducted by the United States Army Corps of Engineers. The information is not to be used for any purpose other than that for which it was originally prepared. The information is not to be used for any purpose other than that for which it was originally prepared.

Submitted:	Surveyed By: JA, JH
Recommended:	Plotted By: AO
Approved:	Checked By: TF

U.S. ARMY CORPS OF ENGINEERS
NEW ORLEANS DISTRICT

**CALCASIEU SHIP CHANNEL
BAR SHEET 38
CR_38_BAR_20150623_POSTSTORM
23 June 2015**

**Sheet Reference Number
38 of 53**