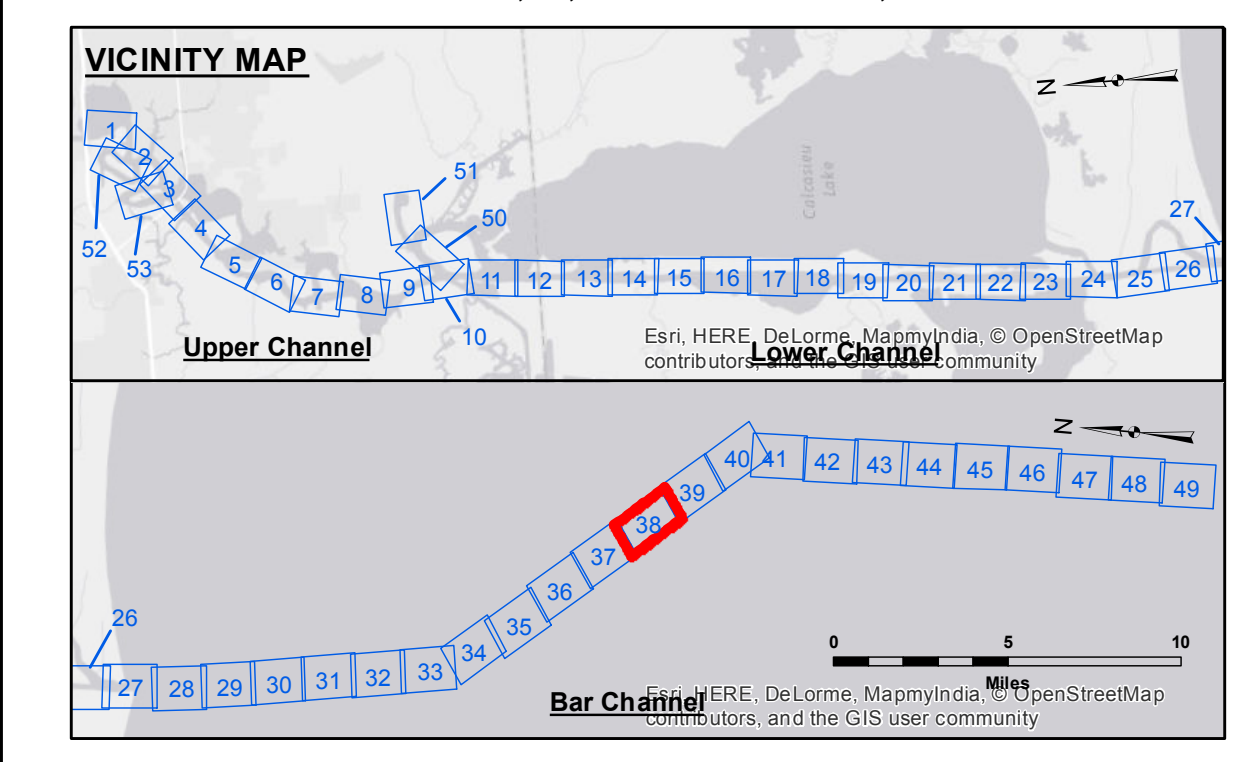
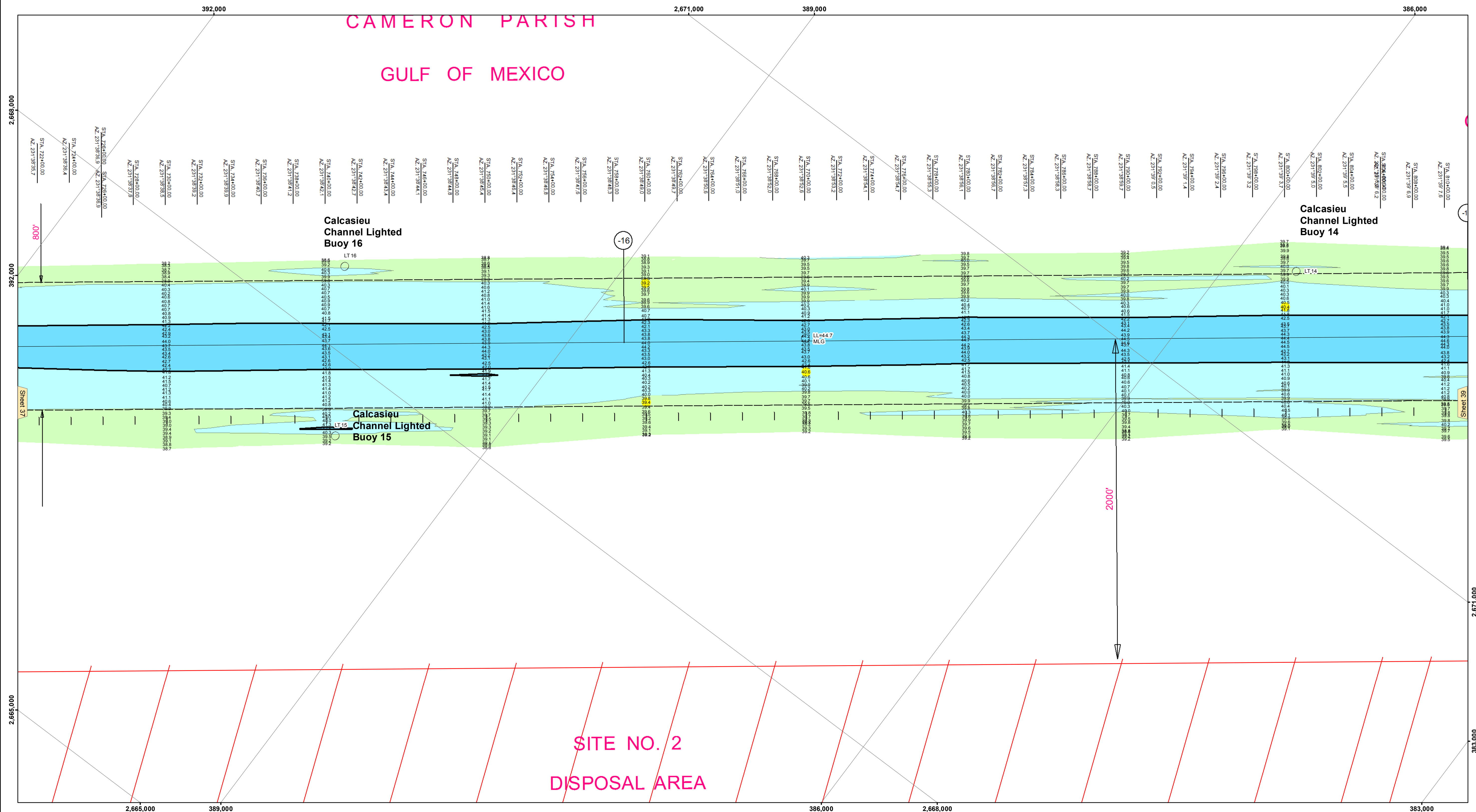


CAMERON PARISH
GULF OF MEXICO



LEGEND

Federal Navigation Channel	Cable Area	Borrow Area	-15' and above
Federal Navigation Center Line	Placement Area	Shoalest Sounding**	-15' to -20'
As-built Pipeline/Cable	Anchorage Area	Beacon, General	-20' to -25'
Unconfirmed Pipeline/Cable	Obstruction Point	Red Navigation Buoy	-25' to -32'
Project Depth Contour	Wrecks-Submerged	Green Navigation Buoy	-32' to -38'
			-38' to -40'
			-40' to -42'
			-42' and below

Gage Reading: CAMERON: 2.27 MLG
 Sea Conditions: 1'
 Vessel Name: MV TECHE
 Survey Type: CONDITION
 Sounding Frequency***: LOW

NOTES:
 Horizontal Coordinate System: North American Datum of 1983 (NAD83), projected to the State Plane Coordinate System (SPCS), Louisiana South Zone. Distance units in U.S. Survey Feet.
 Vertical Datum: Soundings are shown in feet and indicate depths below Mean Low Gulf Datum (MLG). Datum Relationships for gage 73650 as of December 2013: 0.0' NAVD83 (2009.55) = 1.3' MLLW = 2.3' MLG or 0.0' MLLW = 1.0' MLG
 Distances on the Calcasieu River are shown at 1 mile intervals.
 The location of navigation aids are based on and provided by the U.S. Coast Guard and USACE survey crews.
 2010 Aerial Photography data source: NAIP
 Reference is N.O.A.A. Navigation Chart No. 11339.
 ** Shoalest Sounding per Quarter per Reach.
 *** High frequency (200 kHz) survey data represents the first signal return at a sounding location and will include suspended solids, known as "fluff", if present. Low frequency (20 kHz) survey data normally penetrates through this "fluff" layer to depict elevations of consolidated bottom material. Low frequency accuracies may vary depending on channel conditions and fathometer settings.



DISCLAIMER: The United States Government furnishes these data and the recipient accepts and uses them with the express understanding that no warranty is made by the Government as to the reliability, usability, or suitability for any particular purpose of the data. These data are provided "as is" without any representation or warranty, and the recipient understands that the recipient is not to be held liable for any damage or loss resulting from the use of these data. The information depicted on this map represents the results of a hydrographic survey conducted in accordance with the standards of the Hydrographic Surveying Manual, U.S. Army Corps of Engineers, and is intended to represent the general condition existing at that time.

Submitted: _____	Surveyed By: SJR, JHD
Recommended: _____	Plotted By: BID
Approved: _____	Checked By: TAF

U.S. ARMY CORPS OF ENGINEERS
NEW ORLEANS DISTRICT

CALCASIEU SHIP CHANNEL
BAR SHEET 38
CR_38_BAR_20160405
05 April 2016

Sheet Reference Number
38 of 53

Revision Number:
 3.8-0-20150202