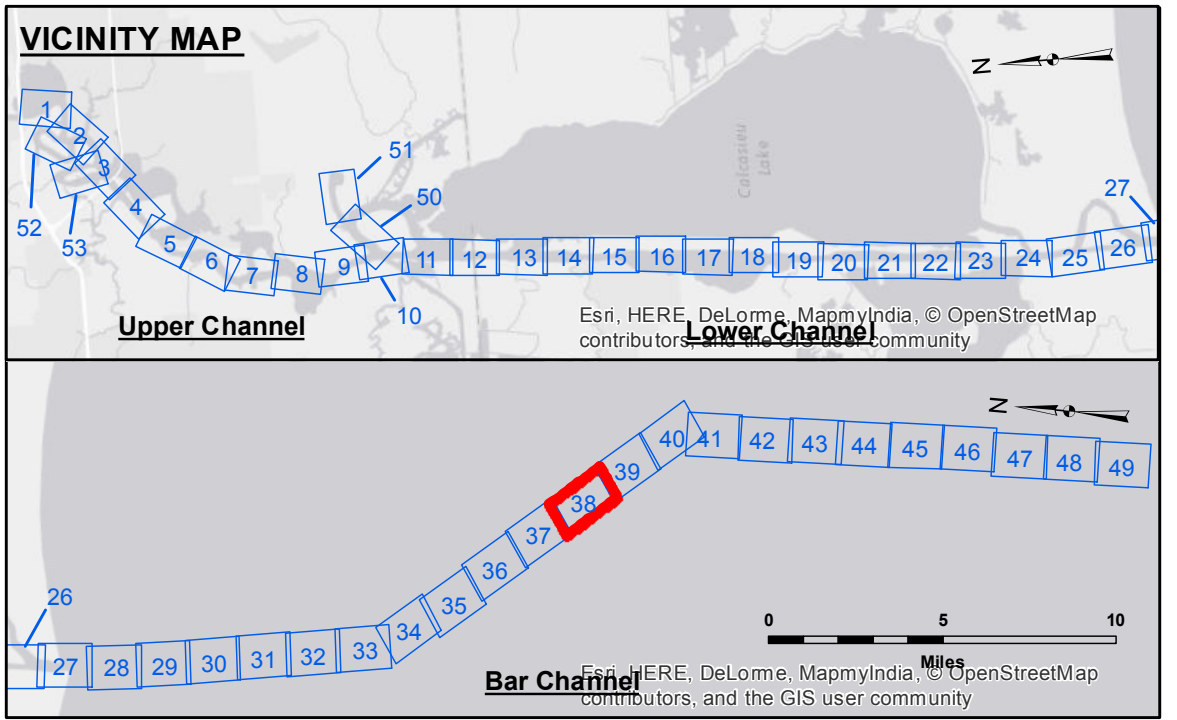
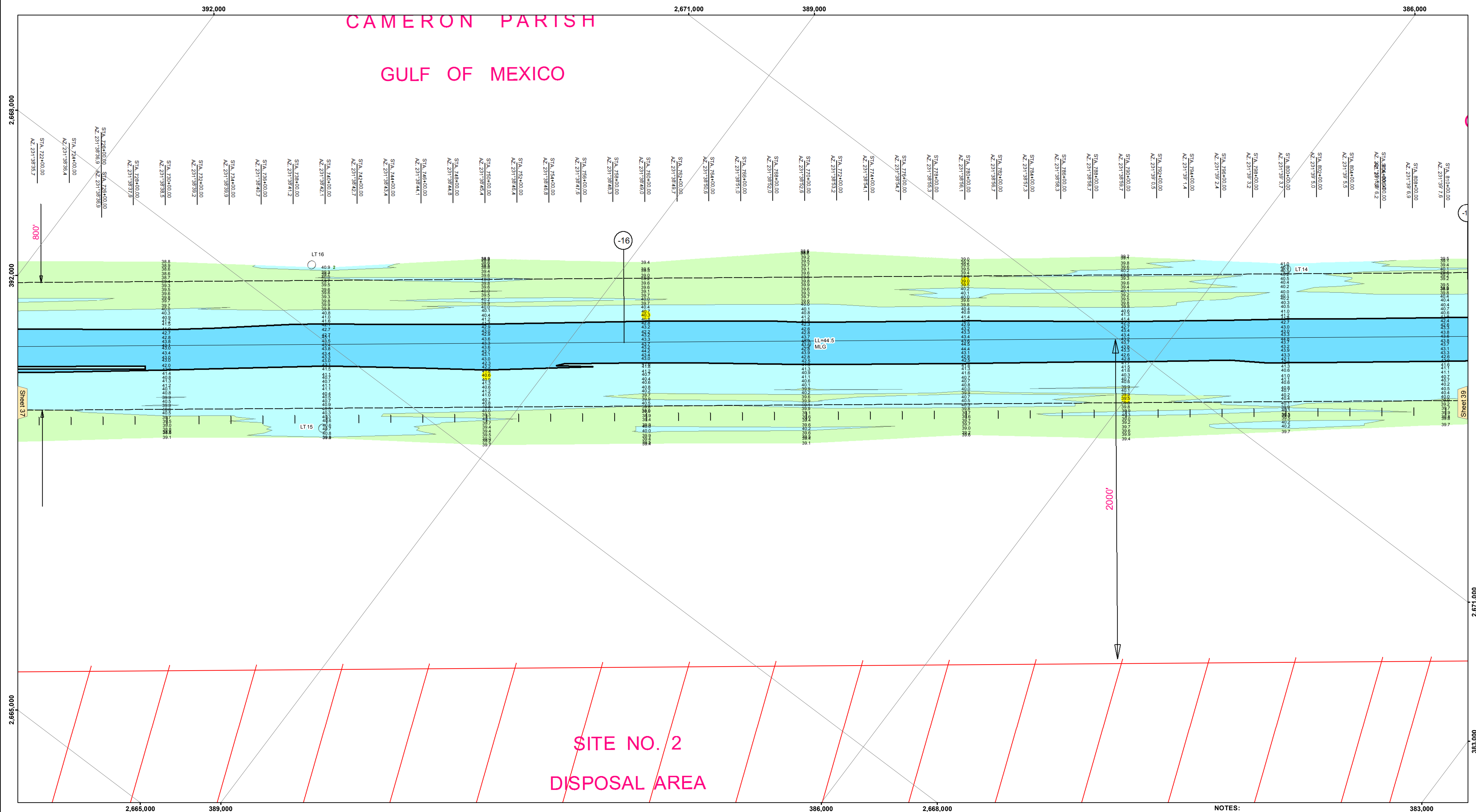


CAMERON PARISH GULF OF MEXICO



LEGEND			
	Federal Navigation Channel		Placement Area
	Federal Navigation Center Line		Anchorage Area
	As-built Pipeline/Cable		Obstruction Point
	Unconfirmed Pipeline/Cable		Wrecks-Submerged
	Project Depth Contour		Fluff Thickness (feet)*
	Cable Area		Shoalest Sounding**
	Beacon, General		Red Navigation Buoy
	Green Navigation Buoy		Green Navigation Buoy

Gage Reading: CAMERON:3.51 MLG
 Sea Conditions: 1'
 Vessel Name: MV TECHE
 Survey Type: CONDITION
 Sounding Frequency***: LOW

NOTES:
 Horizontal Coordinate System: North American Datum of 1983 (NAD83), projected to the State Plane Coordinate System (SPCS), Louisiana South Zone. Distance units in U.S. Survey Feet.
 Vertical Datum: Soundings are shown in feet and indicate depths below Mean Low Gulf Datum (MLG). Datum Relationships for gage 73650 as of December 2013: 0.0' NAVD88 (2009.55) = 1.3' MLLW = 2.3' MLG or 0.0' MLLW = 1.0' MLG
 Distances on the Calcasieu River are shown at 1 mile intervals.
 The location of navigation aids are base on and provided by the U.S. Coast Guard and USACE survey crews.
 2015 Aerial Photography data source: NAIP
 Reference is N.O.A.A. Navigation Chart No. 11339.
 * Difference between high and low frequency elevations where greater than 1.0'.
 ** Shoalest Sounding per Quarter per Reach.
 *** High frequency (200 kHz) survey data represents the first signal return at a sounding location and will include suspended solids, known as "fluff", if present. Low frequency (20 kHz) survey data normally penetrates through this "fluff" layer to depict elevations of consolidated bottom material. Low frequency accuracies may vary depending on channel conditions and fathometer settings.



DISCLAIMER:
 The United States Government furnishes these data and the recipient accepts and uses them with the express understanding that the Government makes no warranty, expressed or implied, regarding the accuracy, completeness, reliability, usability or suitability for any particular purpose of the information. The user is responsible for the results obtained from the use of this information. The user is advised that the use of this information under no liability whatsoever to any person by reason of any use made hereof. These data are being provided to the user for informational purposes only. The user is advised that the use of this information for purposes other than those intended by the Government is not authorized. The user is advised that this data is provided without warranty and that the user is advised that the use of this information for purposes other than those intended by the Government is not authorized. The user is advised that this data is provided without warranty and that the user is advised that the use of this information for purposes other than those intended by the Government is not authorized.

Submitted:	Surveyed By: SR, JH
Recommended:	Plotted By: BD
Checked By: AC	Chief, Waterways Maintenance Section

CALCASIEU SHIP CHANNEL
BAR SHEET 38
CR_38_BAR_20170627_CS
27 June 2017

Sheet Reference Number
38 of 53