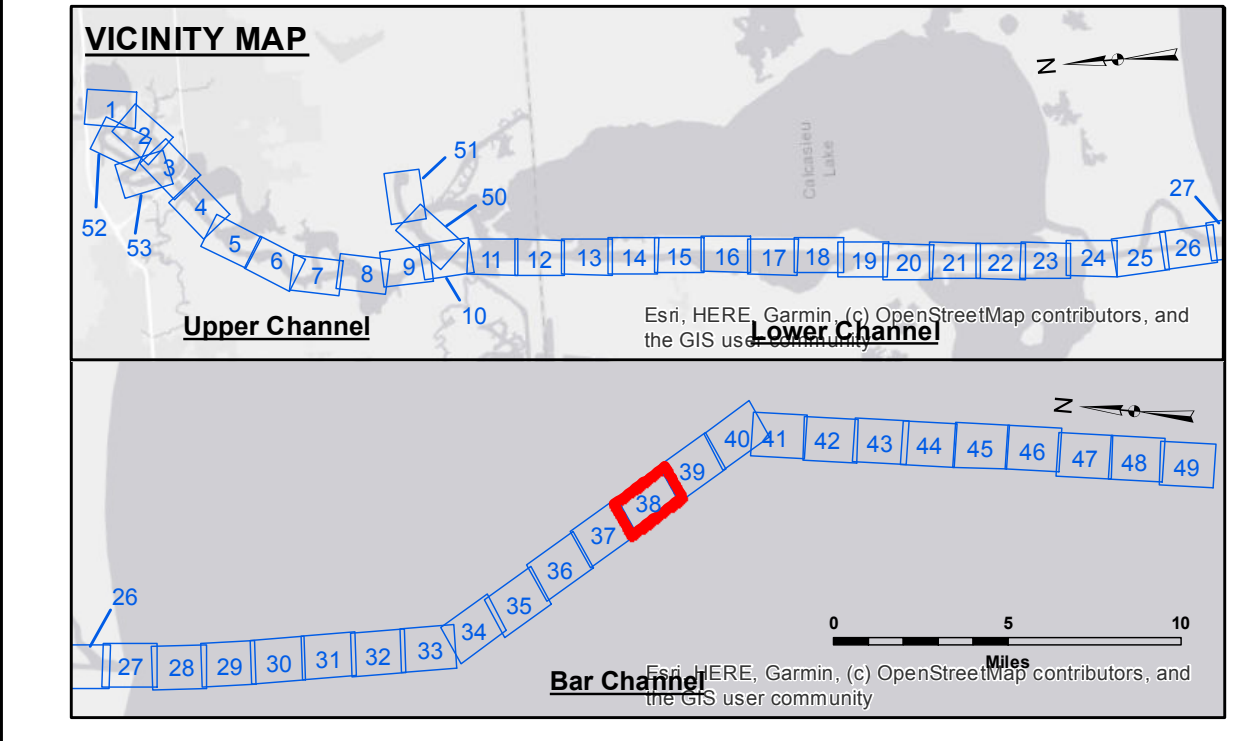
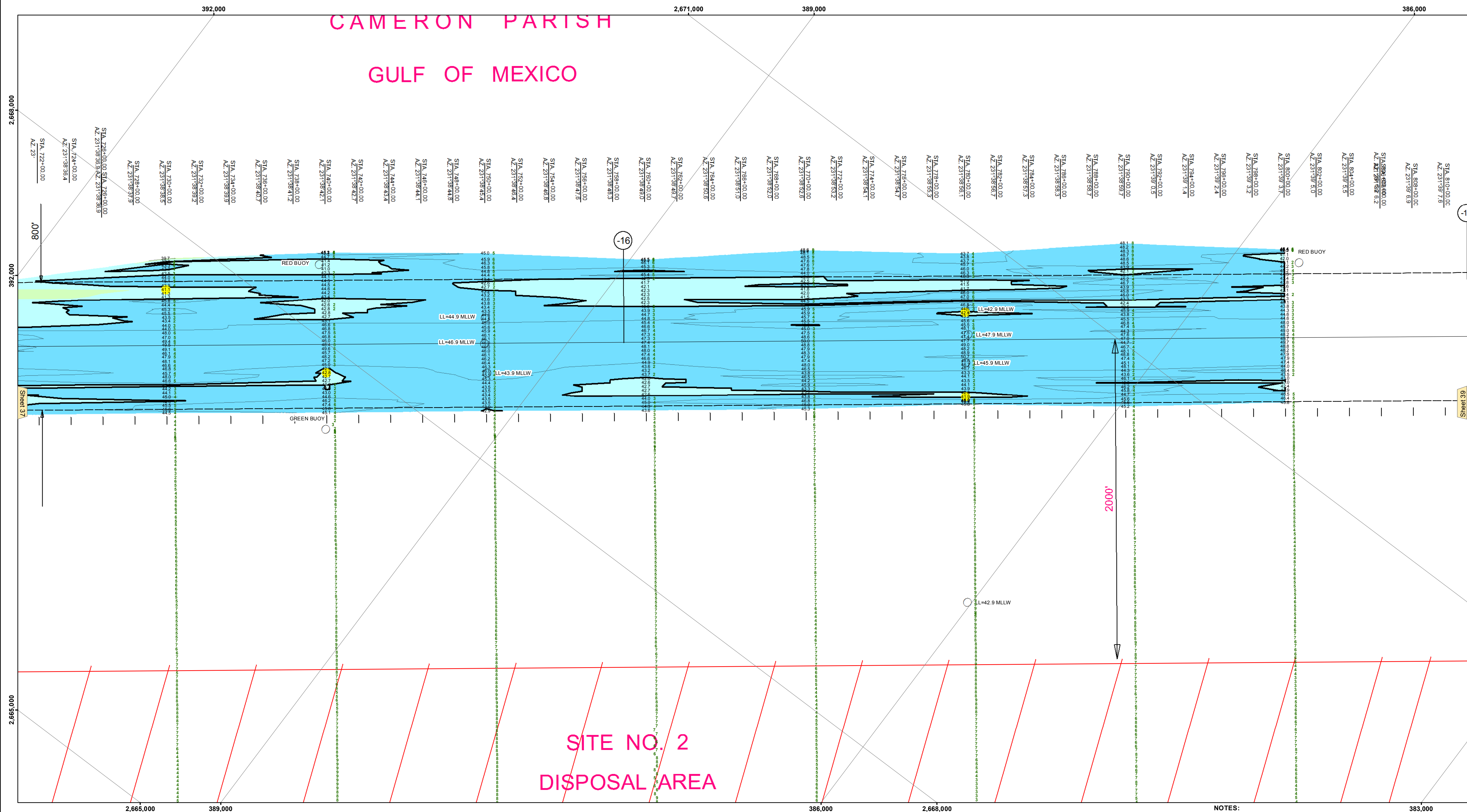


# CAMERON PARISH GULF OF MEXICO



LEGEND			
	Federal Navigation Channel		Placement Area
	Federal Navigation Center Line		Obstruction Point
	As-built Pipeline/Cable		Wrecks-Submerged
	Unconfirmed Pipeline/Cable		Fluff Thickness (feet)*
	Project Depth Contour		Shoalest Sounding**
	Cable Area		Beacon, General
	Anchorage Area		Red Navigation Buoy
	Obstruction Point		Green Navigation Buoy
	Wrecks-Submerged		-16' and above
			-16' to -21'
			-21' to -26'
			-26' to -33'
			-33' to -39'
			-39' to -41'
			-41' to -43'
			-43' and below

**Gage Reading:** CAMERON: 0.10 MLLW AVG.  
**Sea Conditions:** 1-2 FT  
**Vessel Name:** M/V LAFORCHE  
**Survey Type:** CS  
**Sounding Frequency\*\*\*:** HIGH/LOW

**NOTES:**  
 Horizontal Coordinate System: North American Datum of 1983 (NAD83), projected to the State Plane Coordinate System (SPCS), Louisiana South Zone. Distance units in U.S. Survey Feet.  
 Vertical Datum: Soundings are shown in feet and indicate depths below Mean Lower Low Water Datum (MLLW). Datum Relationships for gage 73650 as of December 2013: 0.0' NAVD88 (2009.55) = 1.3' MLLW = 2.3' MLG or 0.0' MLLW = 1.0' MLG  
 Distances on the Calcasieu River are shown at 1 mile intervals.  
 The location of navigation aids are based on and provided by the U.S. Coast Guard and USACE survey crews.  
 2015 Aerial Photography data source: NAIP  
 Reference is N.O.A.A. Navigation Chart No. 11339.  
 \* Difference between high and low frequency elevations where greater than 1.0'.  
 \*\* Shoalest Sounding per Quarter per Reach.  
 \*\*\* High frequency (200 kHz) survey data represents the first signal return at a sounding location and will include suspended solids, known as "fluff", if present. Low frequency (20 kHz) survey data normally penetrates through this "fluff" layer to depict elevations of consolidated bottom material. Low frequency accuracies may vary depending on channel conditions and fathometer settings.



**DISCLAIMER:**  
 The information depicted on this map represents the results of a survey conducted by the United States Army Corps of Engineers. The data is provided for informational purposes only and is not intended for use in any other application. The user is responsible for the accuracy, completeness, and reliability of the data for their intended purpose. The user is advised to verify the data for their specific application. The user is not to be held liable for any damages, including but not limited to, consequential damages, arising from the use of this data. The user is advised to consult the user manual for more information. The user is advised to consult the user manual for more information. The user is advised to consult the user manual for more information.

U.S. ARMY CORPS OF ENGINEERS NEW ORLEANS DISTRICT		
Submitted:	Surveyed By: DJS/SFP	Checked By: AC
Recommended:	Plotted By: BD	
Approved:	Chief, Survey Section	Chief, Waterways Maintenance Section

**CALCASIEU SHIP CHANNEL**  
**BAR SHEET 38**  
**CR\_38\_BAR\_20201217\_CS**  
**17 December 2020**

**Sheet Reference Number**  
**38 of 53**