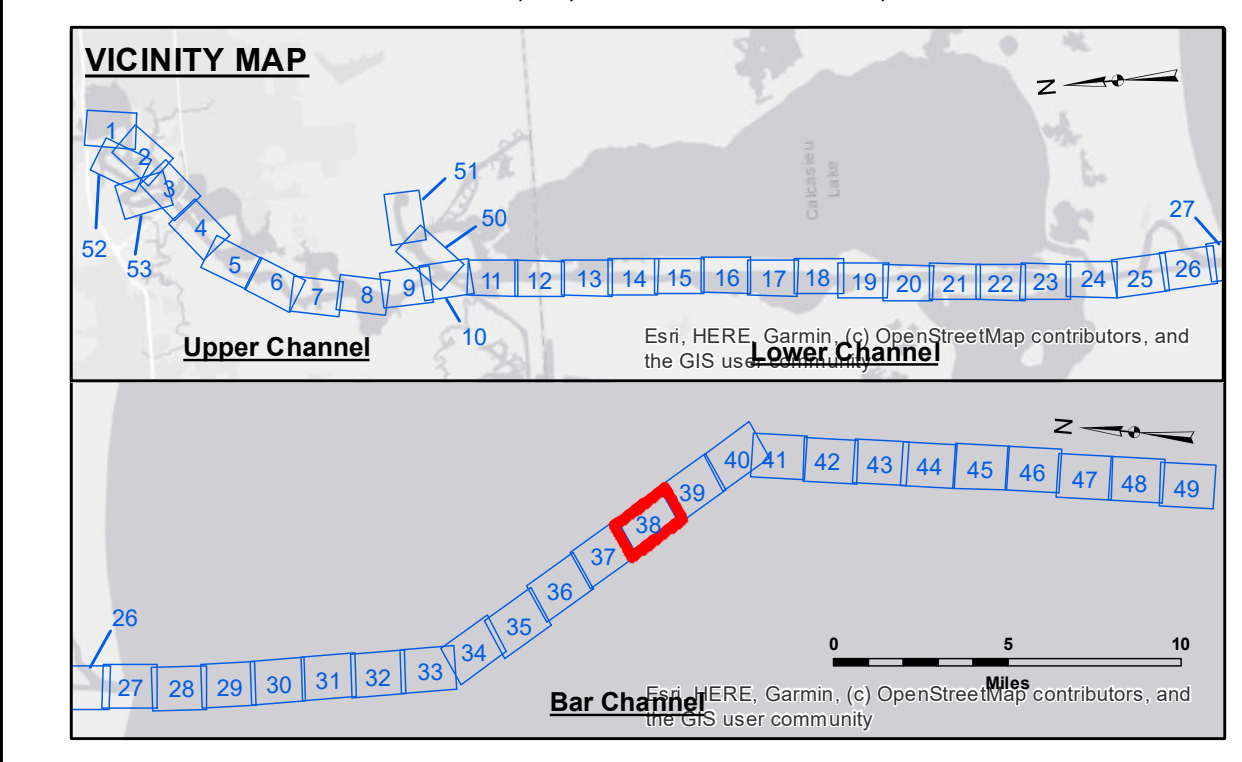
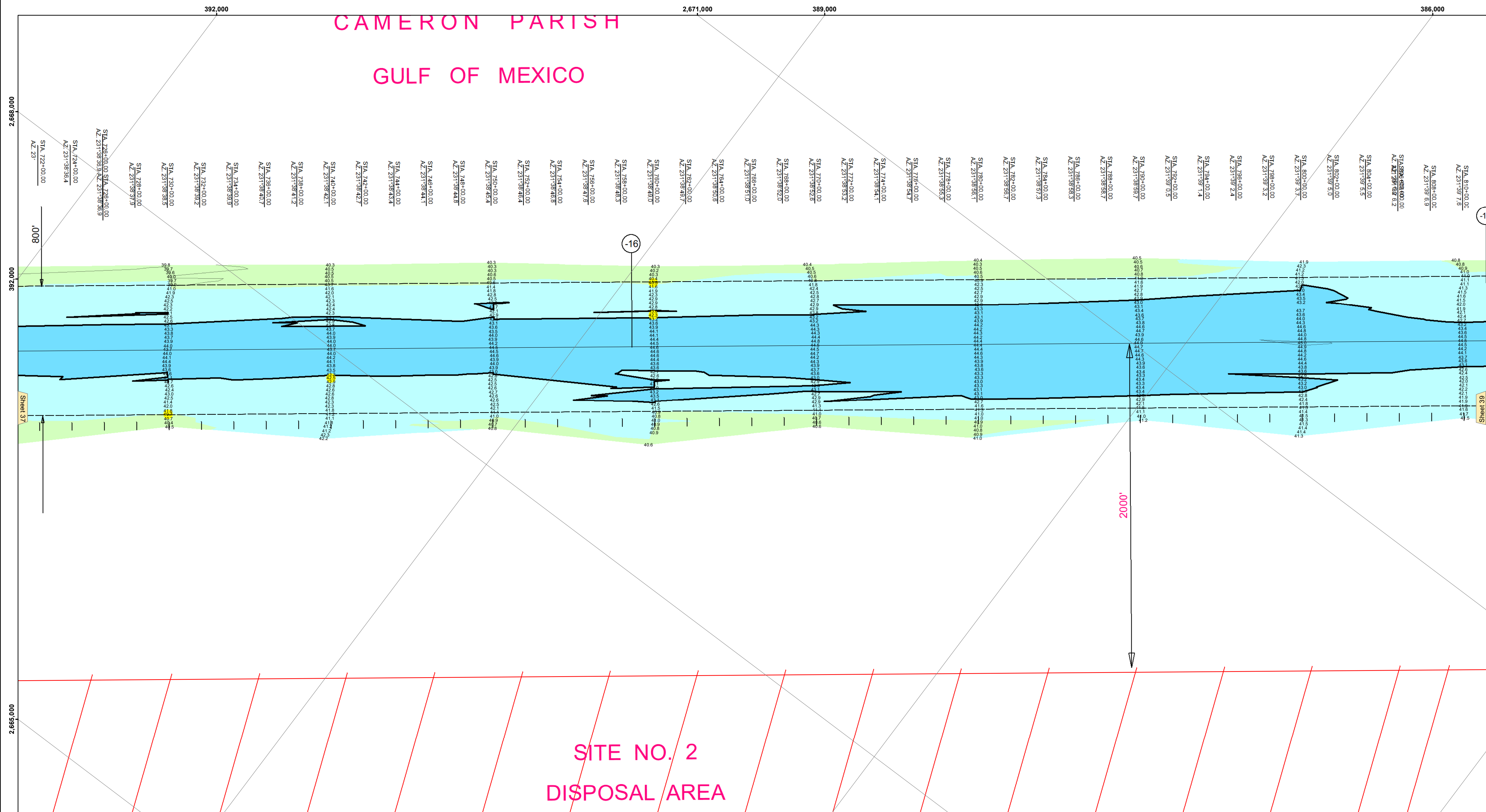


# CAMERON PARISH GULF OF MEXICO



LEGEND			
--- Federal Navigation Channel	○ Cable Area	3 Fluff Thickness (feet)*	-16' and above
— Federal Navigation Center Line	□ Placement Area	● Shoalest Sounding**	-16' to -21'
— As-built Pipeline/Cable	□ Anchorage Area	★ Beacon, General	-21' to -26'
..... Unconfirmed Pipeline/Cable	⊗ Obstruction Point	◆ Red Navigation Buoy	-26' to -33'
— Project Depth Contour	⚓ Wrecks-Submerged	◆ Green Navigation Buoy	-33' to -39'
			-39' to -41'
			-41' to -43'
			-43' and below

Gage Reading: NOAA CALC PASS: 1.5' MLLW AVG  
 Sea Conditions: CALM  
 Vessel Name: SV TURPIN  
 Survey Type: CONDITION  
 Sounding Frequency\*\*\*: LOW

Vertical Datum: 1.5' MLLW AVG  
 Datum Relationships for gage 73650 as of December 2013:  
 0.0' NAVD88 (2009.55) = 1.3' MLLW = 2.3' MLG or 0.0' MLLW = 1.0' MLG

Distances on the Calcasieu River are shown at 1 mile intervals.  
 The location of navigation aids are based on and provided by the U.S. Coast Guard and USACE survey crews.

2015 Aerial Photography data source: NAIP  
 Reference is N.O.A.A. Navigation Chart No. 11339.

\* Difference between high and low frequency elevations where greater than 1.0'.  
 \*\* Shoalest Sounding per Quarter per Reach.  
 \*\*\* High frequency (200 kHz) survey data represents the first signal return at a sounding location and will include suspended solids, known as "fluff", if present. Low frequency (20 kHz) survey data normally penetrates through this "fluff" layer to depict elevations of consolidated bottom material. Low frequency accuracies may vary depending on channel conditions and fathometer settings.



**DISCLAIMER**  
 The information depicted on this map represents the results of a survey conducted by the United States Army Corps of Engineers. The information is provided for informational purposes only and is not intended to be used for any other purpose. The user is responsible for the accuracy, completeness, and reliability of the information. The user is advised to consult the appropriate authorities for the most current information. The information is provided as is, without any warranty, express or implied. The user is advised to consult the appropriate authorities for the most current information. The information is provided as is, without any warranty, express or implied. The user is advised to consult the appropriate authorities for the most current information.

Submitted:	Surveyed By: SWG
Recommended:	Plotted By: JH
Approved:	Checked By: JH

U.S. ARMY CORPS OF ENGINEERS  
 NEW ORLEANS DISTRICT  
 Chief, Waterways Maintenance Section

**CALCASIEU SHIP CHANNEL  
 BAR SHEET 38  
 CR\_38\_BAR\_20210909\_CS\_POSTIDA  
 09 September 2021**

**Sheet Reference Number  
 38 of 53**