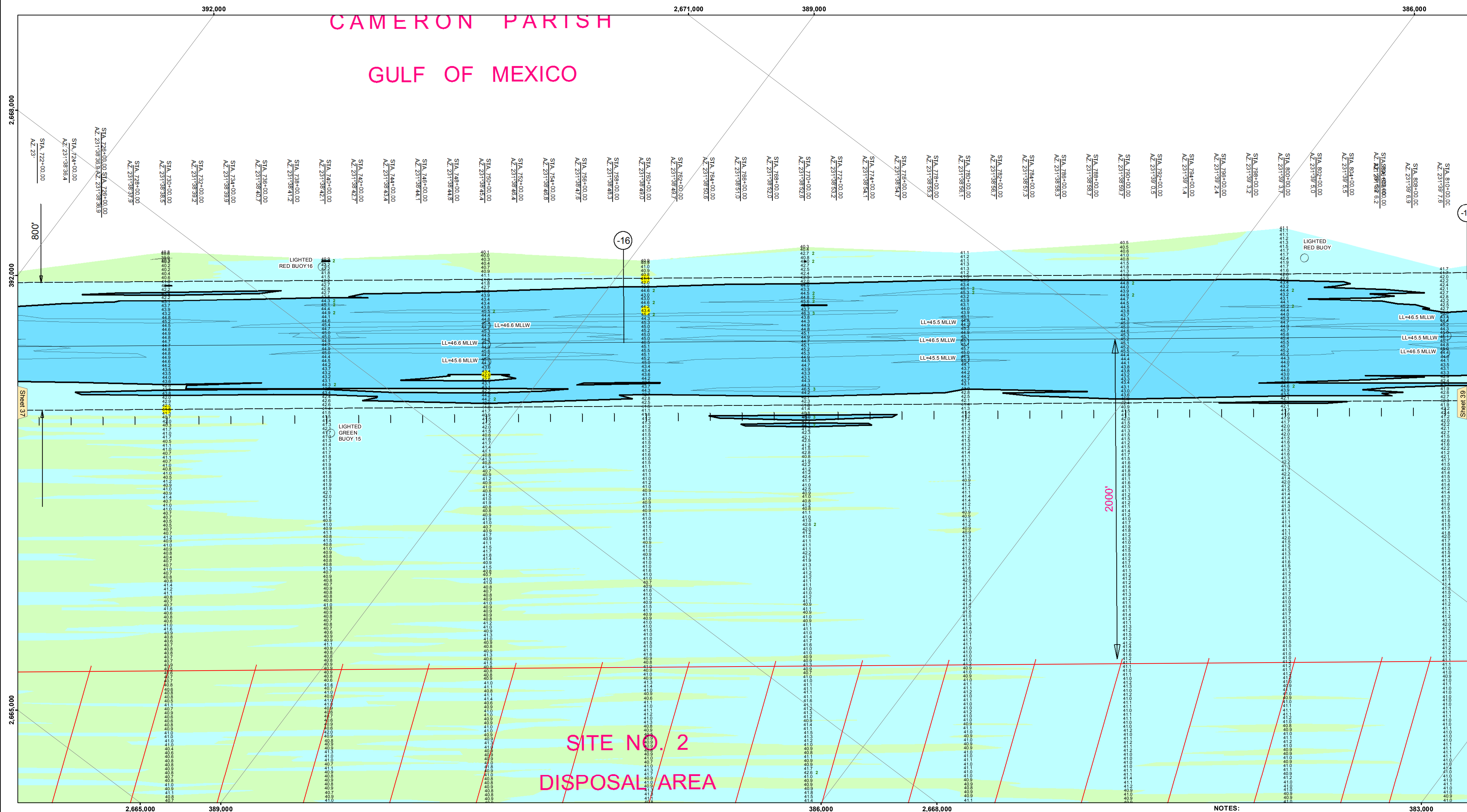


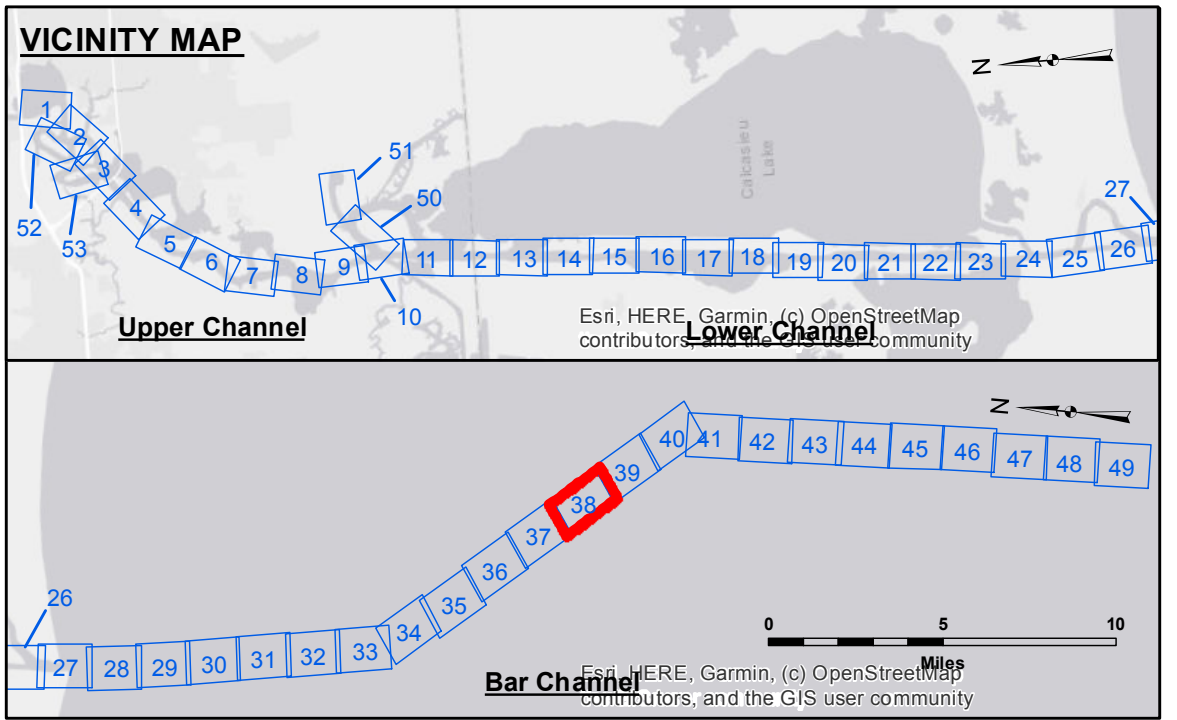
CAMERON PARISH
GULF OF MEXICO



Accession: The United States Government furnishes these data and the recipient accepts and uses them with the express warranty, or implied concerning the accuracy, completeness, reliability, usability or suitability for any particular purpose of the information. The user is responsible for the accuracy of the information under no liability whatsoever to any person by reason of any use made of the information. These data are provided to the recipient under the terms of the Government's Standard Form 700, "Information Management and Data Services Agreement." The recipient may not transfer these data to others without also transferring the Disclaimer. The information depicted on this map represents the results of a survey conducted on or after the date of the survey. It is not intended to represent the general of condition existing at that time.

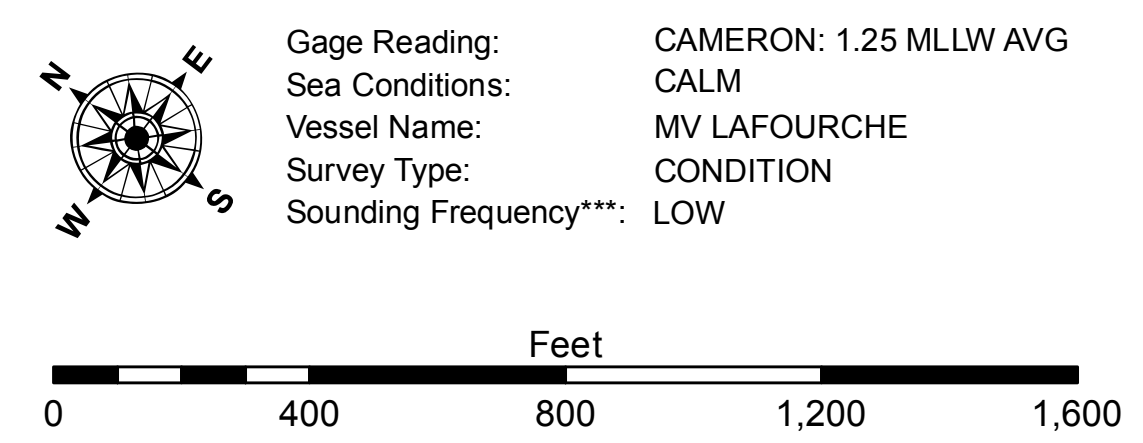
Submitted:	Surveyed By: SPSS
Recommended:	Plotted By: JH
Approved:	Checked By: JH

U.S. ARMY CORPS OF ENGINEERS
NEW ORLEANS DISTRICT
CALCASIEU SHIP CHANNEL
BAR SHEET 38
CR_38_BAR_20220301_CS
01 March 2022



LEGEND

--- Federal Navigation Channel	○ Cable Area	3 Fluff Thickness (feet)*	■ -16' and above
— Federal Navigation Center Line	□ Placement Area	● Shoalest Sounding**	■ -16' to -21'
— As-built Pipeline/Cable	⊗ Anchorage Area	★ Beacon, General	■ -21' to -26'
..... Unconfirmed Pipeline/Cable	⊗ Obstruction Point	◆ Red Navigation Buoy	■ -26' to -33'
— Project Depth Contour	⊗ Wrecks-Submerged	◆ Green Navigation Buoy	■ -33' to -39'
			■ -39' to -41'
			■ -41' to -43'
			■ -43' and below



NOTES:
Horizontal Coordinate System: North American Datum of 1983 (NAD83), projected to the State Plane Coordinate System (SPCS), Louisiana South Zone. Distance units in U.S. Survey Feet.
Vertical Datum: CAMERON: 1.25 MLLW AVG
Gage Reading: CALM
Sea Conditions: MV LAFOURCHE
Vessel Name: CONDITION
Survey Type: LOW
Sounding Frequency***: LOW
Distances on the Calcasieu River are shown at 1 mile intervals.
The location of navigation aids are based on and provided by the U.S. Coast Guard and USACE survey crews.
2015 Aerial Photography data source: NAIP
Reference is N.O.A.A. Navigation Chart No. 11339.
* Difference between high and low frequency elevations where greater than 1.0'.
** Shoalest Sounding per Quarter per Reach.
*** High frequency (200 kHz) survey data represents the first signal return at a sounding location and will include suspended solids, known as "fluff", if present. Low frequency (20 kHz) survey data normally penetrates through this "fluff" layer to depict elevations of consolidated bottom material. Low frequency accuracies may vary depending on channel conditions and fathometer settings.

Sheet Reference Number
38 of 53
Revision Number:
4.2-20220420