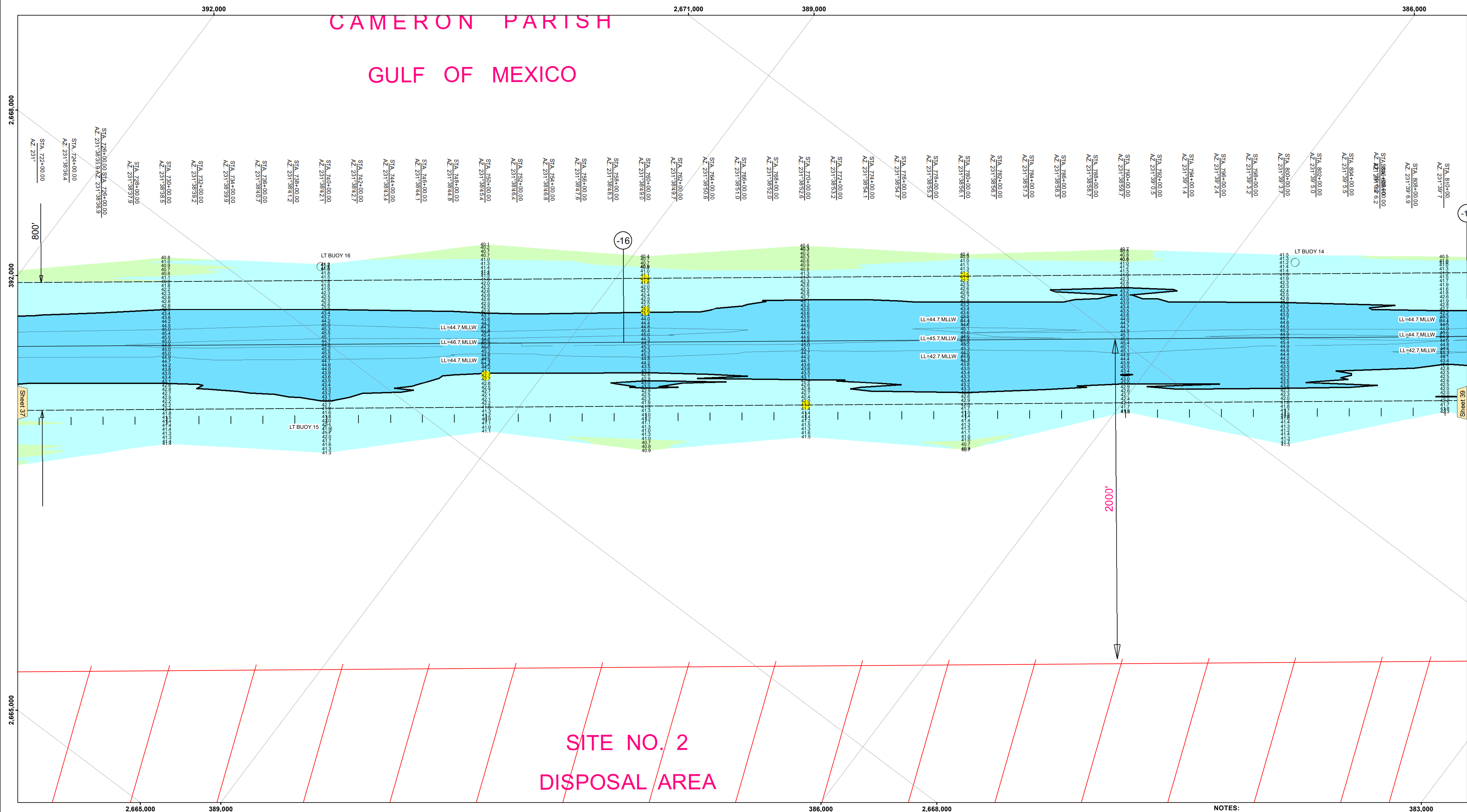


CAMERON PARISH GULF OF MEXICO



US Army Corps of Engineers
District: CEMVN

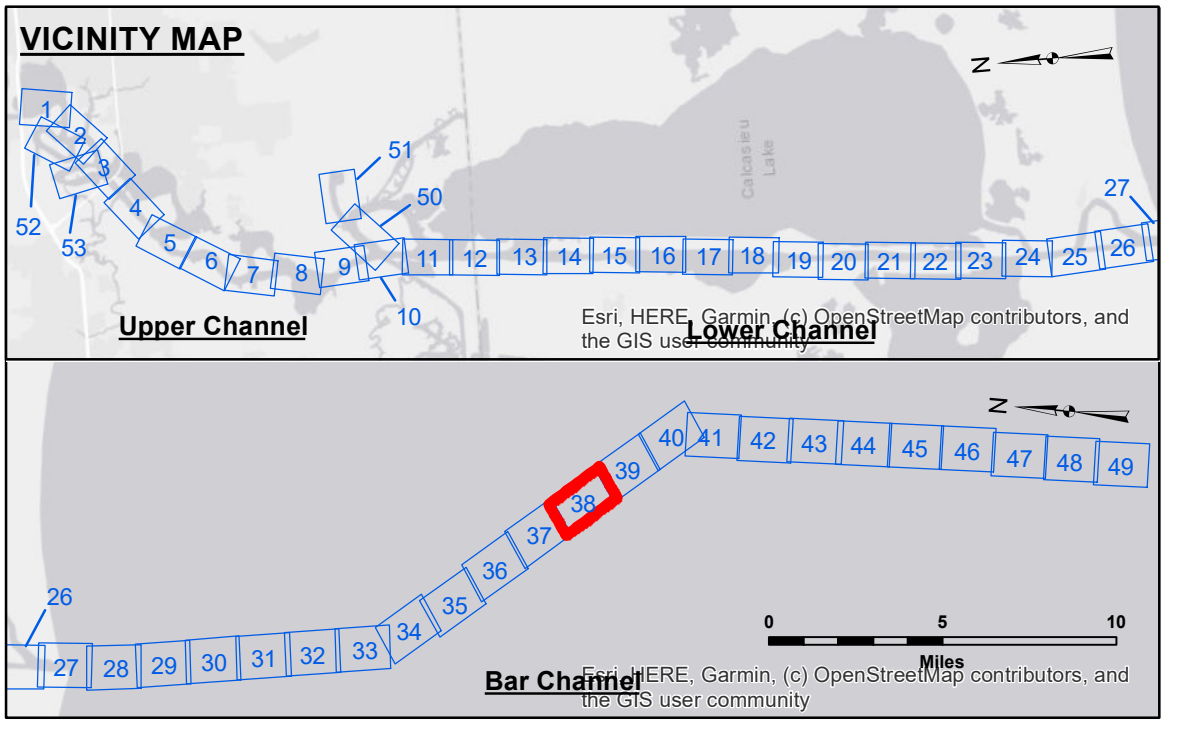
DISTRIBUTION LIABILITY: The data represents the results of data collection for a specific US Army Corps of Engineers project. It is only valid for its intended use, content, time and accuracy specifications. The user is responsible for the results of any use of this data for purposes other than those intended for the project. Data Constants: Hydrographic survey data is subject to change rapidly due to several factors including but not limited to dredging, sedimentation, and changes in the hydrographical conditions which develop after the date of the survey. The user is responsible for the results of any use of this data for purposes other than those intended for the project. The information depicted on this map represents the results of a survey conducted on the date indicated. It is not intended to represent the general condition existing at that time.

| | |
|--|-------------------|
| Submitted: | Surveyed By: SPPS |
| Recommended: Chief, Survey Section | Plotted By: BD |
| Approved: Chief, Waterways Maintenance Section | Checked By: JH/AO |

CALCASIEU SHIP CHANNEL
BAR SHEET 38
CR_38_BAR_20220810_CS
10 August 2022

Sheet Reference Number
38 of 53

Revision Number:
4.2-20200420



| LEGEND | |
|----------------------------------|-----------------------|
| --- Federal Navigation Channel | ● Cable Area |
| — Federal Navigation Center Line | □ Placement Area |
| — As-built Pipeline/Cable | □ Anchorage Area |
| Unconfirmed Pipeline/Cable | ⊗ Obstruction Point |
| — Project Depth Contour | ✈ Wrecks-Submerged |
| 3 Fluff Thickness (feet)* | ★ Beacon, General |
| ● Shoalest Sounding** | ◆ Red Navigation Buoy |
| ● Green Navigation Buoy | |

Gage Reading: 2.31 MLLW AVG.
Sea Conditions: CALM
Vessel Name: MV LAFOURCHE
Survey Type: CONDITION
Sounding Frequency***: LOW

NOTES:
Horizontal Coordinate System: North American Datum of 1983 (NAD83), projected to the State Plane Coordinate System (SPCS), Louisiana South Zone. Distance units in U.S. Survey Feet.
Vertical Datum: Soundings are shown in feet and indicate depths below Mean Lower Low Water Datum (MLLW). Datum Relationships for gage 73650 as of December 2013: 0.0' NAVD88 (2009.55) = 1.3' MLLW = 2.3' MLG or 0.0' MLLW = 1.0' MLG
Distances on the Calcasieu River are shown at 1 mile intervals.
The location of navigation aids are based on and provided by the U.S. Coast Guard and USACE survey crews.
2015 Aerial Photography data source: NAIP
Reference is N.O.A.A. Navigation Chart No. 11339.
* Difference between high and low frequency elevations where greater than 1.0'.
** Shoalest Sounding per Quarter per Reach.
*** High frequency (200 kHz) survey data represents the first signal return at a sounding location and will include suspended solids, known as "fluff", if present. Low frequency (20 kHz) survey data normally penetrates through this "fluff" layer to depict elevations of consolidated bottom material. Low frequency accuracies may vary depending on channel conditions and fathometer settings.