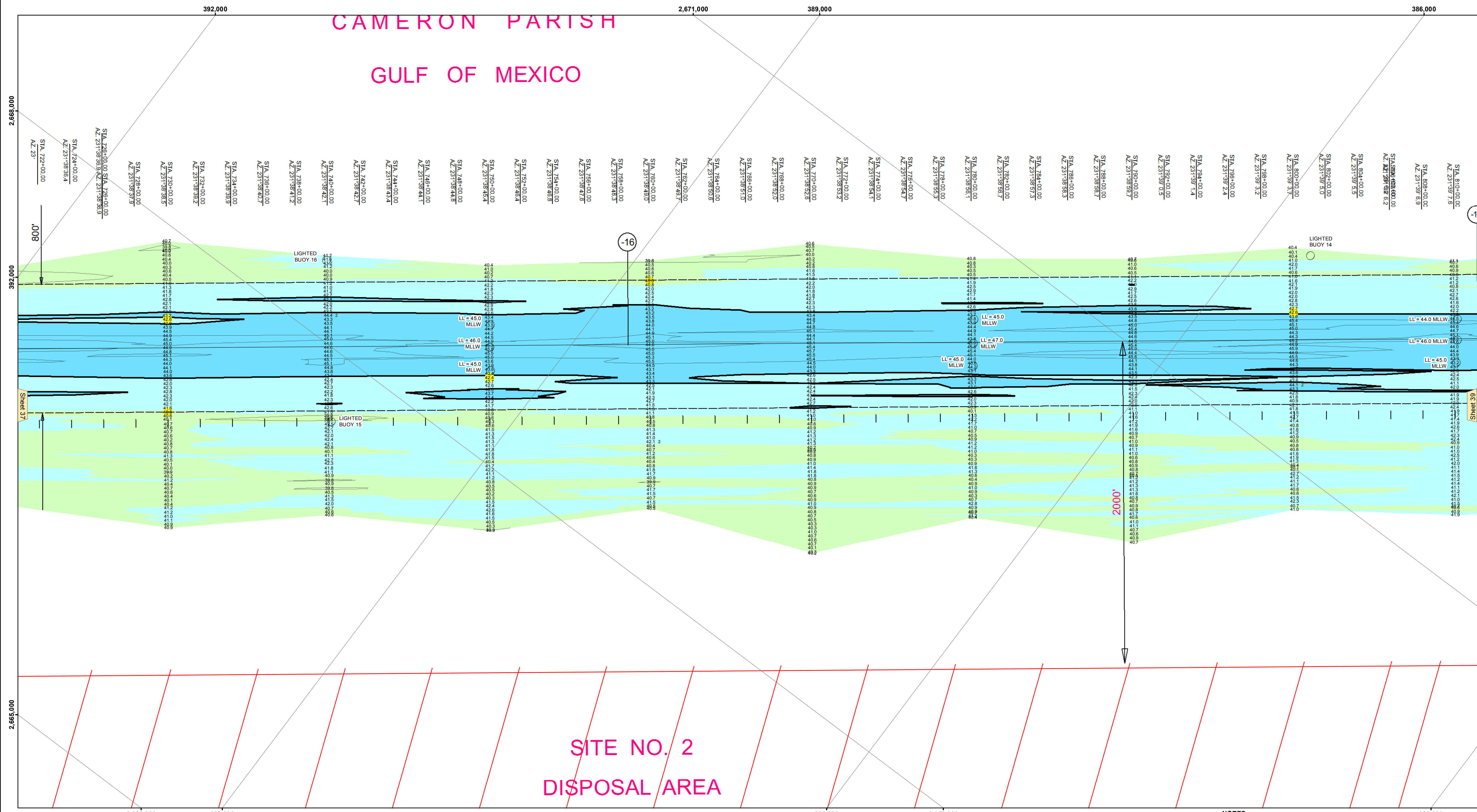


**CAMERON PARISH
GULF OF MEXICO**

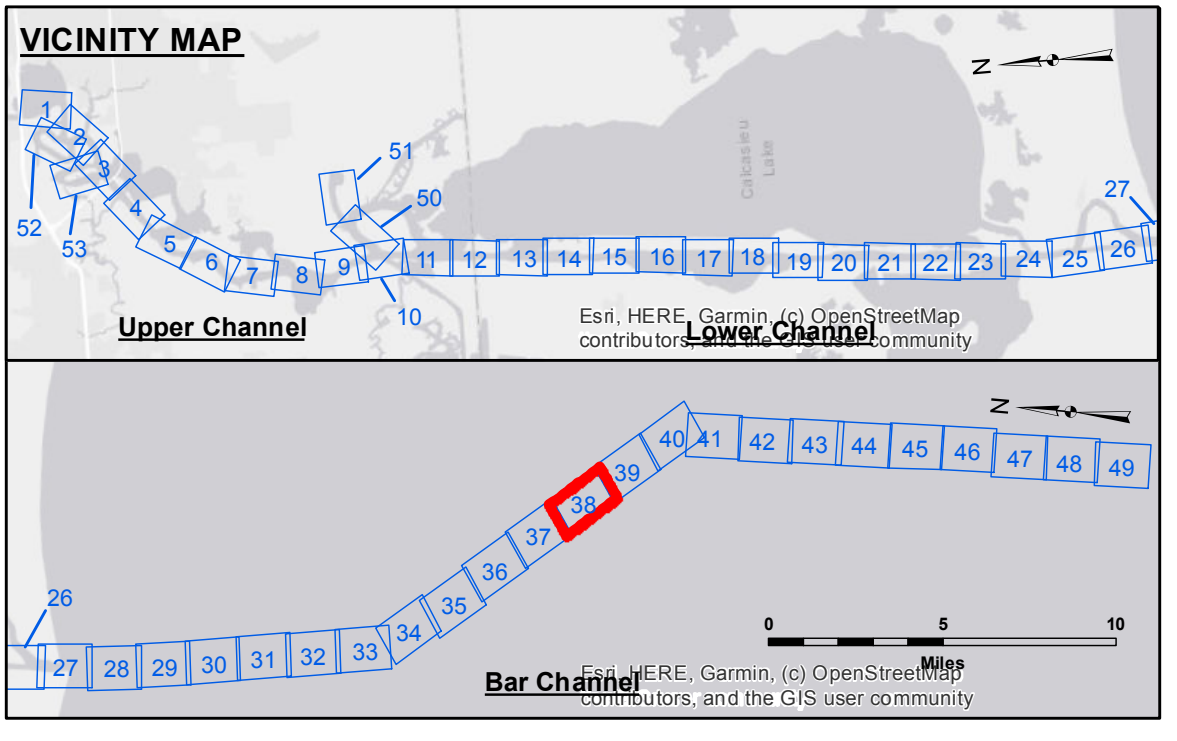


Accession: The United States Government furnishes these data and the recipient accepts and uses them with the express understanding that the data are not to be used for any purpose other than that for which they were originally prepared, and that the Government makes no warranty, expressed or implied, concerning the accuracy, completeness, reliability, usability, or availability of any data furnished hereunder. The recipient shall be responsible for verifying the accuracy, completeness, reliability, usability, or availability of any data furnished hereunder. The recipient shall be responsible for obtaining any necessary permissions from the appropriate authority for the use of any data furnished hereunder. The recipient shall be responsible for obtaining any necessary permissions from the appropriate authority for the use of any data furnished hereunder. The recipient shall be responsible for obtaining any necessary permissions from the appropriate authority for the use of any data furnished hereunder.

Submitted:	Surveyed By:	SP-SK
Recommended:	Plotted By:	JH
Approved:	Checked By:	JH

**CALCASIEU SHIP CHANNEL
BAR SHEET 38
CR_38_BAR_20230105_CS
05 January 2023**

**Sheet Reference Number
38 of 53**



LEGEND

- Federal Navigation Channel
- Federal Navigation Center Line
- As-built Pipeline/Cable
- Unconfirmed Pipeline/Cable
- Project Depth Contour
- Cable Area
- Placement Area
- Anchorage Area
- ⊗ Obstruction Point
- ⚓ Wrecks-Submerged
- 3 Fluff Thickness (feet)*
- Shoalest Sounding**
- ★ Beacon, General
- ◆ Red Navigation Buoy
- Green Navigation Buoy
- 16' and above
- 16' to -21'
- 21' to -26'
- 26' to -33'
- 33' to -39'
- 39' to -41'
- 41' to -43'
- 43' and below

NOTES:
Horizontal Coordinate System: North American Datum of 1983 (NAD83), projected to the State Plane Coordinate System (SPCS), Louisiana South Zone. Distance units in U.S. Survey Feet.
Vertical Datum: CAMERON: 1.0 MLLW AVG
Soundings are shown in feet and indicate depths below Mean Lower Low Water Datum (MLLW). Datum Relationships for gage 73650 as of December 2013: 0.0' NAVD88 (2009.55) = 1.3' MLLW = 2.3' MLG or 0.0' MLLW = 1.0' MLG
Distances on the Calcasieu River are shown at 1 mile intervals.
The location of navigation aids are based on and provided by the U.S. Coast Guard and USACE survey crews.
2015 Aerial Photography data source: NAIP
Reference is N.O.A.A. Navigation Chart No. 11339.
* Difference between high and low frequency elevations where greater than 1.0'.
** Shoalest Sounding per Quarter per Reach.
*** High frequency (200 kHz) survey data represents the first signal return at a sounding location and will include suspended solids, known as "fluff", if present. Low frequency (20 kHz) survey data normally penetrates through this "fluff" layer to depict elevations of consolidated bottom material. Low frequency accuracies may vary depending on channel conditions and fathometer settings.