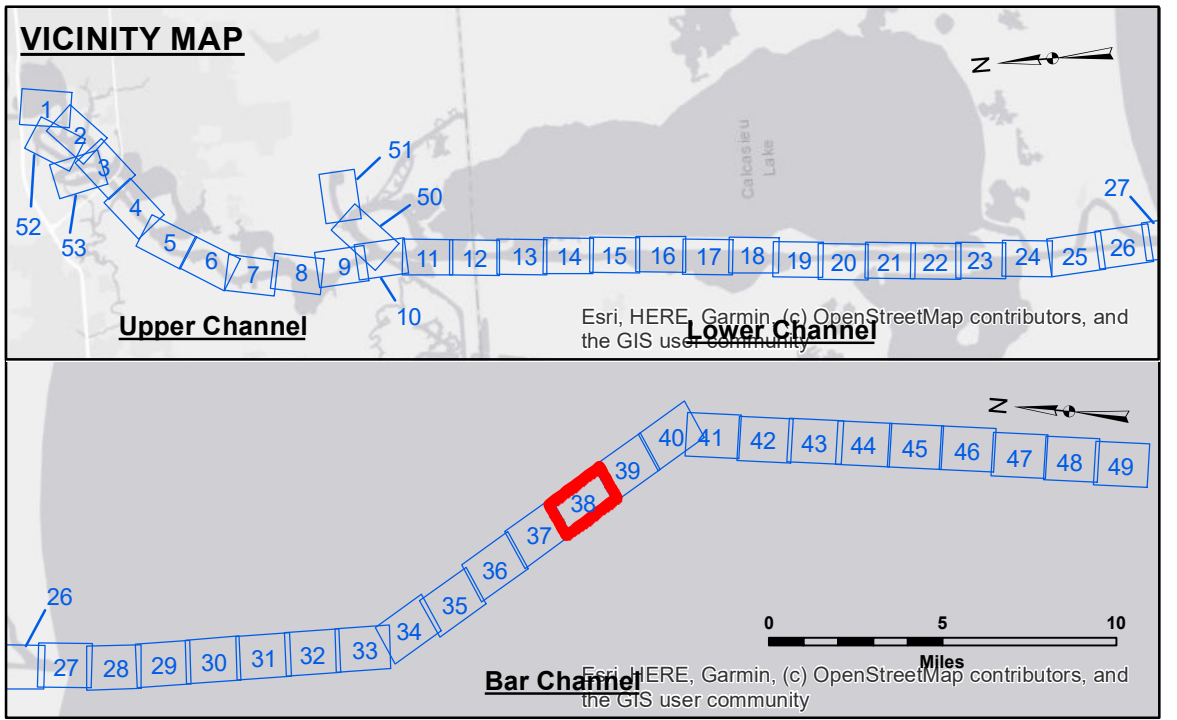
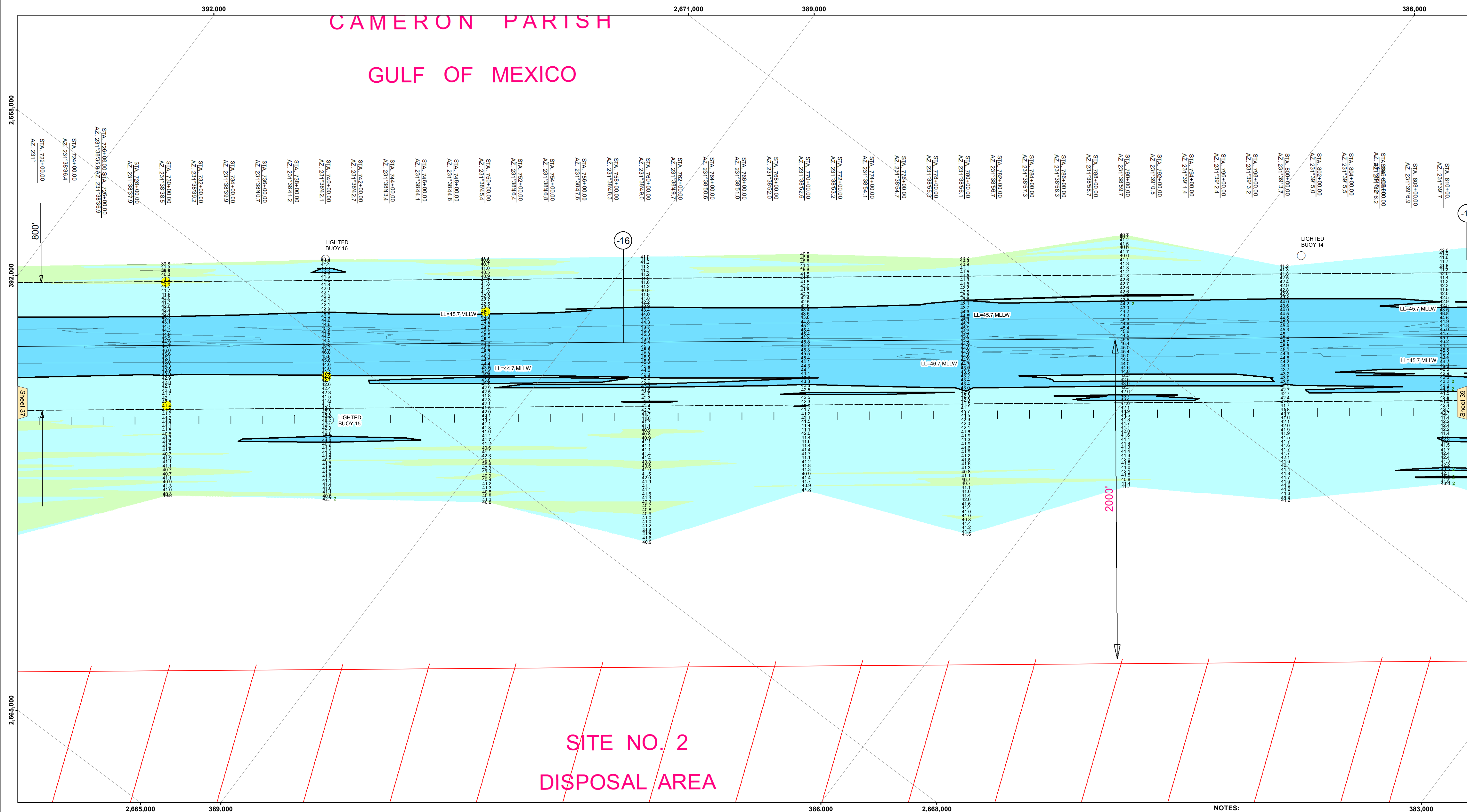


CAMERON PARISH GULF OF MEXICO



LEGEND		Fluff Thickness (feet)*	
--- Federal Navigation Channel	○ Cable Area	Red	-16' and above
— Federal Navigation Center Line	□ Placement Area	Orange	-16' to -21'
— As-built Pipeline/Cable	☆ Anchorage Area	Yellow	-21' to -26'
..... Unconfirmed Pipeline/Cable	⊗ Obstruction Point	Light Green	-26' to -33'
— Project Depth Contour	⚓ Wrecks-Submerged	Green	-33' to -39'
	★ Beacon, General	Light Blue	-39' to -41'
	◆ Red Navigation Buoy	Blue	-41' to -43'
	◇ Green Navigation Buoy	Dark Blue	-43' and below
	3		Fluff Thickness (feet)*
	●		Shoalest Sounding**

Gage Reading: CAMERON AUTO: 1.3 MLLW AVG
 Sea Conditions: CALM
 Vessel Name: MV TECHE
 Survey Type: CONDITION
 Sounding Frequency***: LOW

NOTES:
 Horizontal Coordinate System: North American Datum of 1983 (NAD83), projected to the State Plane Coordinate System (SPCS), Louisiana South Zone. Distance units in U.S. Survey Feet.
 Vertical Datum: Soundings are shown in feet and indicate depths below Mean Lower Low Water Datum (MLLW). Datum Relationships for gage 73650 as of December 2013: 0.0' NAVD88 (2009.55) = 1.3' MLLW = 2.3' MLG or 0.0' MLLW = 1.0' MLG
 Distances on the Calcasieu River are shown at 1 mile intervals.
 The location of navigation aids are based on and provided by the U.S. Coast Guard and USACE survey crews.
 2015 Aerial Photography data source: NAIP
 Reference is N.O.A.A. Navigation Chart No. 11339.
 * Difference between high and low frequency elevations where greater than 1.0'.
 ** Shoalest Sounding per Quarter per Reach.
 *** High frequency (200 kHz) survey data represents the first signal return at a sounding location and will include suspended solids, known as "fluff", if present. Low frequency (20 kHz) survey data normally penetrates through this "fluff" layer to depict elevations of consolidated bottom material. Low frequency accuracies may vary depending on channel conditions and fathometer settings.



DISCLAIMER: The United States Government furnishes these data and the recipient accepts and uses them with the express understanding that the United States Government makes no warranty, expressed or implied, concerning the accuracy, completeness, reliability, usability or suitability of the information for the purposes intended. The user is responsible for the use of the information for the purposes intended. The user is responsible for the use of the information for the purposes intended. The user is responsible for the use of the information for the purposes intended. The user is responsible for the use of the information for the purposes intended.

U.S. ARMY CORPS OF ENGINEERS NEW ORLEANS DISTRICT		
Submitted:	Surveyed By: SP-JS	Plotted By: AO
Recommended:	Chief, Survey Section	Checked By: AC
Approved:	Chief, Waterways Maintenance Section	

**CALCASIEU SHIP CHANNEL
 BAR SHEET 38
 CR_38_BAR_20230503_CS
 03 May 2023**

**Sheet Reference Number
 38 of 53**