

US Army Corps of Engineers
District: CEMVNV

Division Liability: The data reported in this report were derived from the best available information and are not a warranty of accuracy. The user is responsible for the use of the data for any purpose other than that for which they were intended. The user is responsible for the use of the data for any purpose other than that for which they were intended. The user is responsible for the use of the data for any purpose other than that for which they were intended.

DISCLAIMER: The United States Government makes no warranty, express or implied, regarding the accuracy, reliability, or completeness of the information provided in this report. The user is responsible for the use of the data for any purpose other than that for which they were intended. The user is responsible for the use of the data for any purpose other than that for which they were intended. The user is responsible for the use of the data for any purpose other than that for which they were intended.

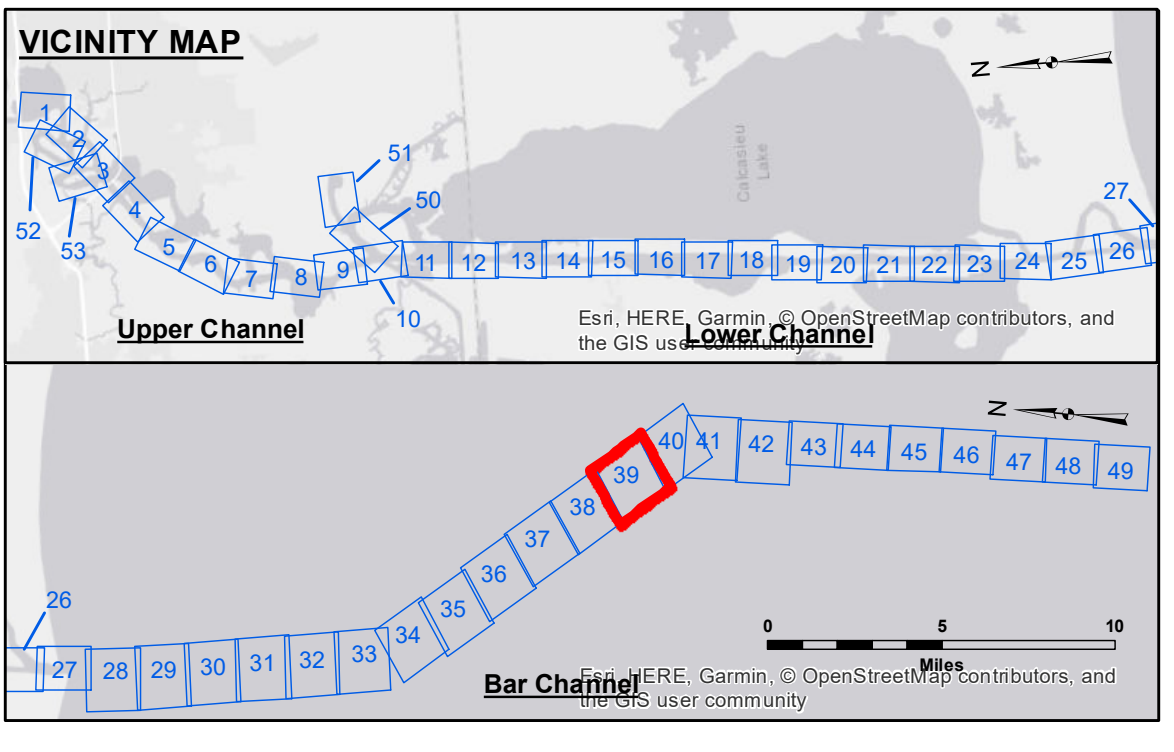
| | |
|---------------------------------------|--------|
| Submitted: | SR, JH |
| Recommended: | BD |
| Checked By: | AO |
| Chief, Survey Section: | |
| Chief, Waterways Maintenance Section: | |

U.S. ARMY CORPS OF ENGINEERS
NEW ORLEANS DISTRICT

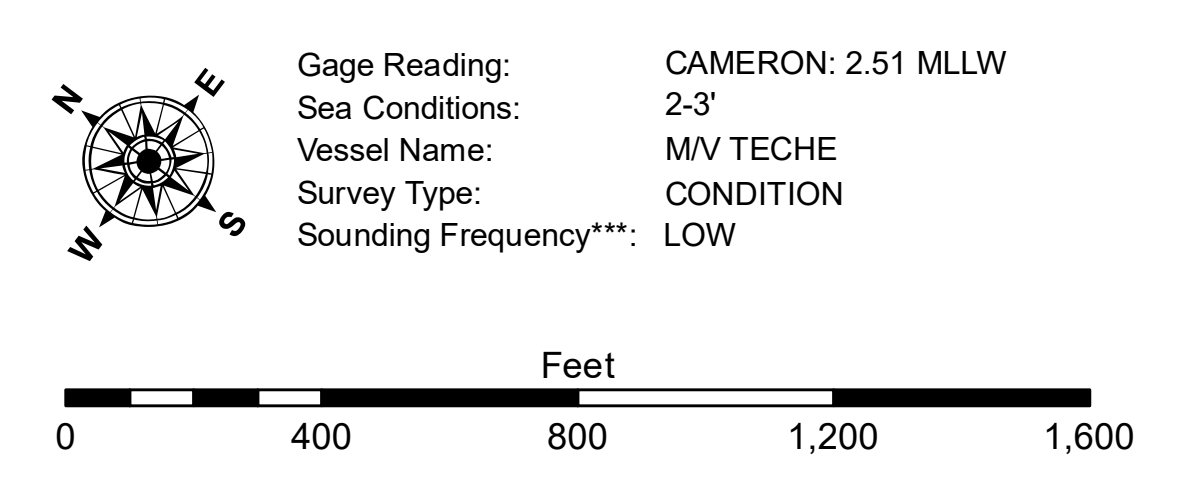
CALCASIEU SHIP CHANNEL
BAR SHEET 39
CR_39_BARX_20171114_CS
14 November 2017

Sheet Reference Number
39 of 53

Revision Number:
3.12-2016111



| LEGEND | |
|----------------------------------|-------------------------|
| --- Federal Navigation Channel | ● Cable Area |
| — Federal Navigation Center Line | ■ Placement Area |
| — As-built Pipeline/Cable | □ Anchorage Area |
| --- Unconfirmed Pipeline/Cable | ⊠ Obstruction Point |
| — Project Depth Contour | ✈ Wrecks-Submerged |
| 3 Fluff Thickness (feet)* | ★ Beacon, General |
| ● Shoalest Sounding** | ★ Red Navigation Buoy |
| ★ Beacon, General | ◆ Green Navigation Buoy |
| ■ Placement Area | |
| □ Anchorage Area | |
| ⊠ Obstruction Point | |
| ✈ Wrecks-Submerged | |
| ★ Beacon, General | |
| ★ Red Navigation Buoy | |
| ◆ Green Navigation Buoy | |



NOTES:
Horizontal Coordinate System:
North American Datum of 1983 (NAD83), projected to the State Plane Coordinate System (SPCS), Louisiana South Zone. Distance units in U.S. Survey Feet.

Vertical Datum:
Soundings are shown in feet and indicate depths below Mean Lower Low Water Datum (MLLW). Datum Relationships for page 73650 as of December 2013:
0.0' NAVD88 (2009.55) = 1.3' MLLW = 2.3' MLG or 0.0' MLLW = 1.0' MLG

Distances on the Calcasieu River are shown at 1 mile intervals.

The location of navigation aids are based on and provided by the U.S. Coast Guard and USACE survey crews.

2015 Aerial Photography data source: NAIP

Reference is N.O.A. Navigation Chart No. 11339.

* Difference between high and low frequency elevations where greater than 1.0'.
** Shoalest Sounding per Quarter per Reach.

*** High frequency (200 kHz) survey data represents the first signal return at a sounding location and will include suspended solids, known as "fluff", if present. Low frequency (20 kHz) survey data normally penetrates through this "fluff" layer to depict elevations of consolidated bottom material. Low frequency accuracies may vary depending on channel conditions and fathometer settings.