

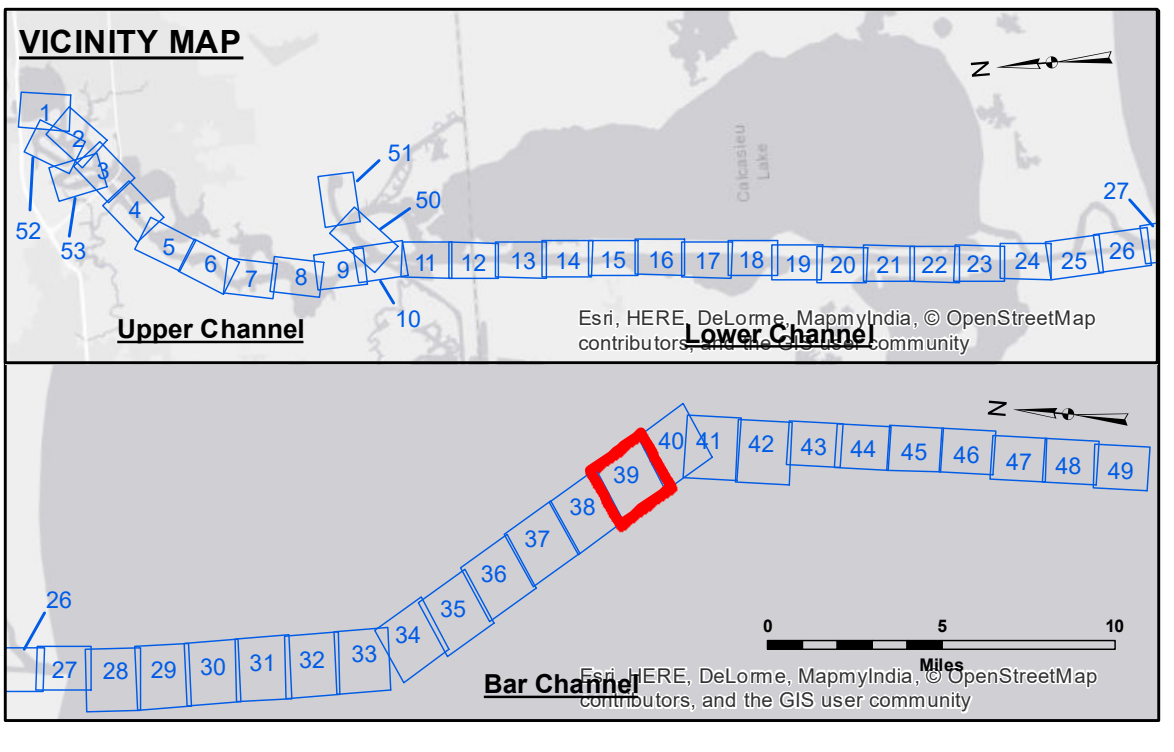
DISCLAIMER
 The United States Government makes no warranty, express or implied, regarding the accuracy, reliability, or completeness of the information contained herein. The user is responsible for the use of the information and for the consequences of any use. The information is provided for informational purposes only and is not intended to be used for any other purpose. The user is responsible for the use of the information and for the consequences of any use. The information is provided for informational purposes only and is not intended to be used for any other purpose. The user is responsible for the use of the information and for the consequences of any use.

Submitted:	Checked By:
Recommended:	Approved:
Chief, Survey Section	Chief, Waterways Maintenance Section

CALCASIEU SHIP CHANNEL
BAR SHEET 39
CR_39_BARX_20180620_AD
 20 June 2018

Sheet Reference Number
39 of 53

Revision Number:
 3.12-2016111



LEGEND	
--- Federal Navigation Channel	● Cable Area
— Federal Navigation Center Line	□ Placement Area
— As-built Pipeline/Cable	□ Anchorage Area
--- Unconfirmed Pipeline/Cable	□ Obstruction Point
— Project Depth Contour	✶ Wrecks-Submerged
3 Fluff Thickness (feet)*	★ Beacon, General
● Shoalest Sounding**	★ Red Navigation Buoy
★ Beacon, General	◆ Green Navigation Buoy
■ -16' and above	
■ -21' to -26'	
■ -26' to -33'	
■ -33' to -39'	
■ -39' to -41'	
■ -41' to -43'	
■ -43' and below	

Gage Reading: CAMERON: 1.99 MLLW
Sea Conditions: 1'-2"
Vessel Name: M/V LAFOURCHE
Survey Type: CONDITION
Sounding Frequency:** LOW

Vertical Datum:
 Soundings are shown in feet and indicate depths below Mean Lower Low Water Datum (MLLW).
 Datum Relationships for page 73650 as of December 2013:
 0.0' NAVD88 (2009.55) = 1.3' MLLW = 2.3' MLG or 0.0' MLLW = 1.0' MLG

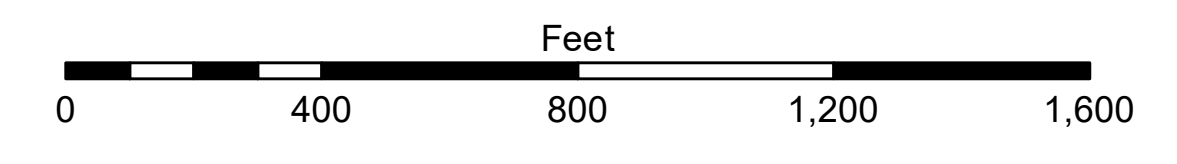
Distances on the Calcasieu River are shown at 1 mile intervals.

The location of navigation aids are based on and provided by the U.S. Coast Guard and USACE survey crews.

2015 Aerial Photography data source: NAIP
 Reference is N.O.A. Navigation Chart No. 11339.

* Difference between high and low frequency elevations where greater than 1.0'.
 ** Shoalest Sounding per Quarter per Reach.

*** High frequency (200 kHz) survey data represents the first signal return at a sounding location and will include suspended solids, known as "fluff", if present. Low frequency (20 kHz) survey data normally penetrates through this "fluff" layer to depict elevations of consolidated bottom material. Low frequency accuracies may vary depending on channel conditions and fathometer settings.



NOTES:
 Horizontal Coordinate System:
 North American Datum of 1983 (NAD83), projected to the State Plane Coordinate System (SPCS), Louisiana South Zone. Distance units in U.S. Survey Feet.