

**US Army Corps of Engineers**  
District: CEMVNV

Disclaimer: The United States Government... The data represented in this map... is not intended for use in any other manner... The user is responsible for the accuracy of the data... and for the results of any use of the data... The user is also responsible for the accuracy of the data... and for the results of any use of the data... The user is also responsible for the accuracy of the data... and for the results of any use of the data...

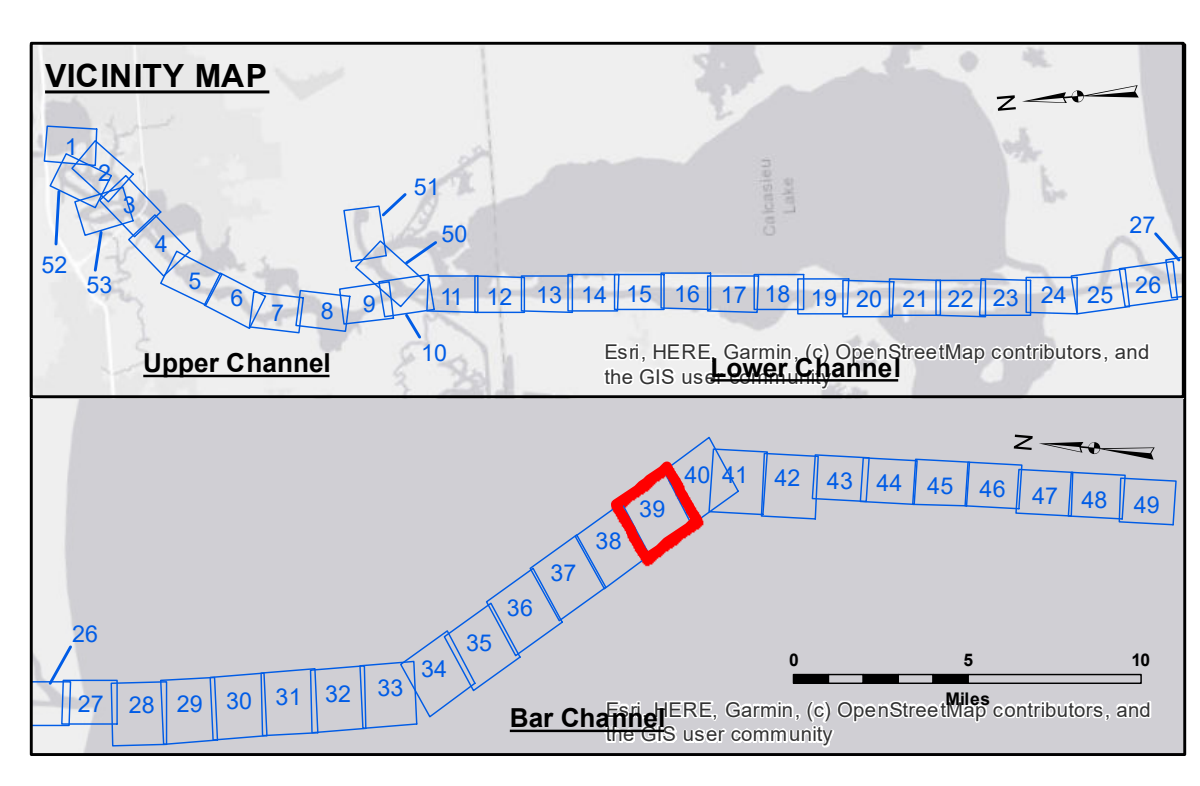
|                       |                                      |
|-----------------------|--------------------------------------|
| Submitted:            | Checked By:                          |
| Revised By:           | Approved:                            |
| Chief, Survey Section | Chief, Waterways Maintenance Section |

**U.S. ARMY CORPS OF ENGINEERS**  
NEW ORLEANS DISTRICT

**CALCASIEU SHIP CHANNEL**  
BAR SHEET 39  
CR\_39\_BARX\_20190731\_CS  
31 July 2019

**Sheet Reference Number**  
39 of 53

Revision Number:  
42-30190703



| LEGEND                           |                         |
|----------------------------------|-------------------------|
| --- Federal Navigation Channel   | ● Cable Area            |
| — Federal Navigation Center Line | ■ Placement Area        |
| — As-built Pipeline/Cable        | □ Anchorage Area        |
| --- Unconfirmed Pipeline/Cable   | ⊗ Obstruction Point     |
| — Project Depth Contour          | ⚓ Wrecks-Submerged      |
| ● 3 Fluff Thickness (feet)*      | ★ Beacon, General       |
| ● Shoalest Sounding**            | ★ Red Navigation Buoy   |
| ● -16' and above                 | ★ Green Navigation Buoy |
| ● -16' to -21'                   |                         |
| ● -21' to -26'                   |                         |
| ● -26' to -33'                   |                         |
| ● -33' to -39'                   |                         |
| ● -39' to -41'                   |                         |
| ● -41' to -43'                   |                         |
| ● -43' and below                 |                         |

**NOTES:**

Horizontal Coordinate System:  
North American Datum of 1983 (NAD83), projected to the State Plane Coordinate System (SPCS), Louisiana South Zone. Distance units in U.S. Survey Feet.

Vertical Datum:  
Soundings are shown in feet and indicate depths below Mean Lower Low Water Datum (MLLW). Datum Relationships for page 73650 as of December 2013:  
0.0' NAVD88 (2009.55) = 1.3' MLLW = 2.3' MLG or 0.0' MLLW = 1.0' MLG

Distances on the Calcasieu River are shown at 1 mile intervals.

The location of navigation aids are based on and provided by the U.S. Coast Guard and USACE survey crews.

2015 Aerial Photography data source: NAIP

Reference is N.O.A. Navigation Chart No. 11339.

\* Difference between high and low frequency elevations where greater than 1.0'.  
\*\* Shoalest Sounding per Quarter per Reach.

\*\*\* High frequency (200 kHz) survey data represents the first signal return at a sounding location and will include suspended solids, known as "fluff", if present. Low frequency (20 kHz) survey data normally penetrates through this "fluff" layer to depict elevations of consolidated bottom material. Low frequency accuracies may vary depending on channel conditions and fathometer settings.

Gage Reading: CAMERON: 2.7 to 0.7 MLLW  
Sea Conditions: 2-3'  
Vessel Name: VALENTOUR  
Survey Type: CS  
Sounding Frequency\*\*\*: HIGH

**NOTES:**

Horizontal Coordinate System:  
North American Datum of 1983 (NAD83), projected to the State Plane Coordinate System (SPCS), Louisiana South Zone. Distance units in U.S. Survey Feet.

Vertical Datum:  
Soundings are shown in feet and indicate depths below Mean Lower Low Water Datum (MLLW). Datum Relationships for page 73650 as of December 2013:  
0.0' NAVD88 (2009.55) = 1.3' MLLW = 2.3' MLG or 0.0' MLLW = 1.0' MLG

Distances on the Calcasieu River are shown at 1 mile intervals.

The location of navigation aids are based on and provided by the U.S. Coast Guard and USACE survey crews.

2015 Aerial Photography data source: NAIP

Reference is N.O.A. Navigation Chart No. 11339.

\* Difference between high and low frequency elevations where greater than 1.0'.  
\*\* Shoalest Sounding per Quarter per Reach.

\*\*\* High frequency (200 kHz) survey data represents the first signal return at a sounding location and will include suspended solids, known as "fluff", if present. Low frequency (20 kHz) survey data normally penetrates through this "fluff" layer to depict elevations of consolidated bottom material. Low frequency accuracies may vary depending on channel conditions and fathometer settings.