

US Army Corps of Engineers District: CEMV

Access/Availability: This information is for the use of the recipient only. It is not to be distributed outside the recipient's organization without the approval of the Chief, Waterways Maintenance Section.

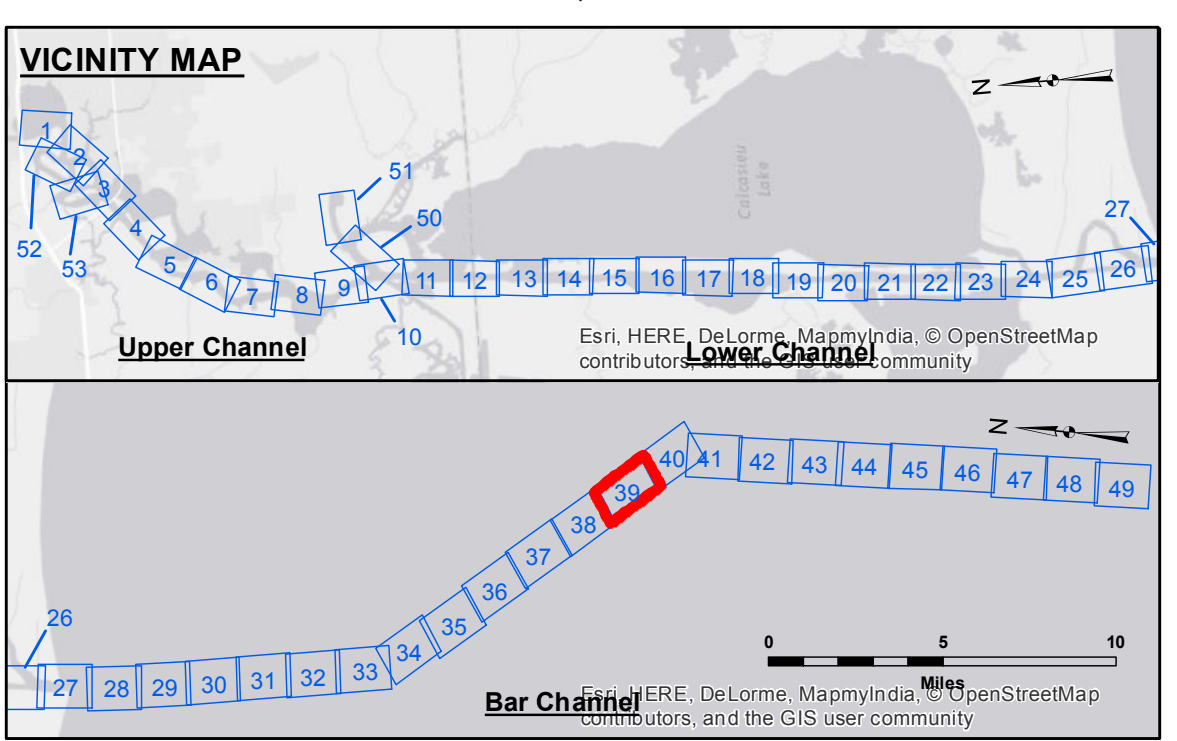
Disclaimer: The information depicted on this map represents the results of a hydrographic survey conducted by the U.S. Army Corps of Engineers. It is not a guarantee of accuracy or reliability. The user is responsible for the results of any application of this information. The user is also responsible for the safety of their own operations. The U.S. Army Corps of Engineers does not warrant the accuracy or reliability of this information for any purpose other than that for which it was collected.

Copyright: © 2016 U.S. Army Corps of Engineers

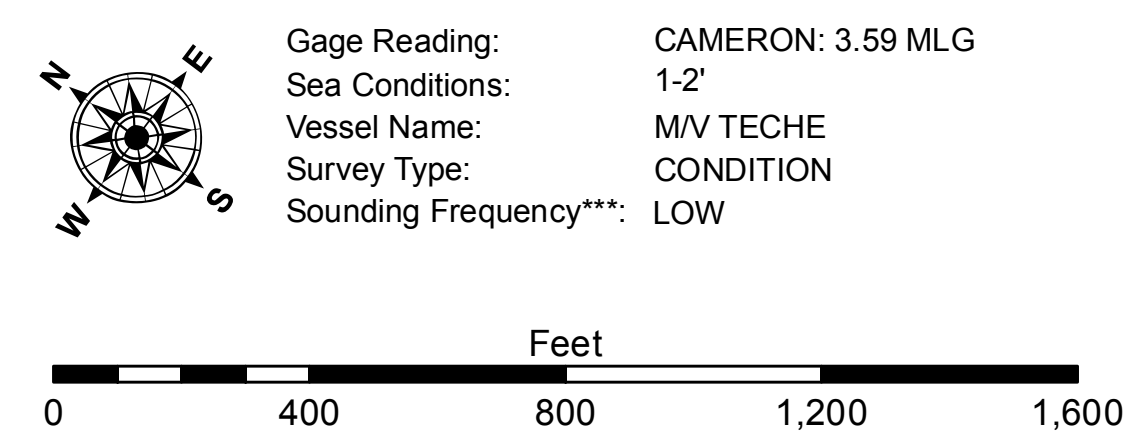
U.S. ARMY CORPS OF ENGINEERS NEW ORLEANS DISTRICT		
Submitted:	Surveyed By:	Checked By:
Recommended:	PLotted By:	IAF
Chief, Survey Section	BJD	
Approved:	Chief, Waterways Maintenance Section	

CALCASIEU SHIP CHANNEL
BAR SHEET 39
CR_39_BAR_20160504
04 May 2016

Sheet Reference Number
39 of 53



LEGEND		
- - - Federal Navigation Channel	○ Cable Area	□ Borrow Area
— Federal Navigation Center Line	■ Placement Area	● Shoalest Sounding**
— As-built Pipeline/Cable	⊗ Anchorage Area	★ Beacon, General
- · - · - Unconfirmed Pipeline/Cable	⊗ Obstruction Point	♦ Red Navigation Buoy
— Project Depth Contour	⊗ Wrecks-Submerged	◇ Green Navigation Buoy
		■ -15' and above
		■ -15' to -20'
		■ -20' to -25'
		■ -25' to -32'
		■ -32' to -38'
		■ -38' to -40'
		■ -40' to -42'
		■ -42' and below



NOTES:

Horizontal Coordinate System: North American Datum of 1983 (NAD83), projected to the State Plane Coordinate System (SPCS), Louisiana South Zone. Distance units in U.S. Survey Feet.

Vertical Datum: Soundings are shown in feet and indicate depths below Mean Low Gulf Datum (MLG). Datum Relationships for gage 73650 as of December 2013: 0.0' NAVD88 (2009.55) = 1.3' MLLW = 2.3' MLG or 0.0' MLLW = 1.0' MLG

Distances on the Calcasieu River are shown at 1 mile intervals.

The location of navigation aids are base on and provided by the U.S. Coast Guard and USACE survey crews.

2010 Aerial Photography data source: NAIP
Reference is N.O.A.A. Navigation Chart No. 11339.

** Shoalest Sounding per Quarter per Reach.

*** High frequency (200 kHz) survey data represents the first signal return at a sounding location and will include suspended solids, known as "fluff", if present. Low frequency (20 kHz) survey data normally penetrates through this "fluff" layer to depict elevations of consolidated bottom material. Low frequency accuracies may vary depending on channel conditions and fathometer settings.