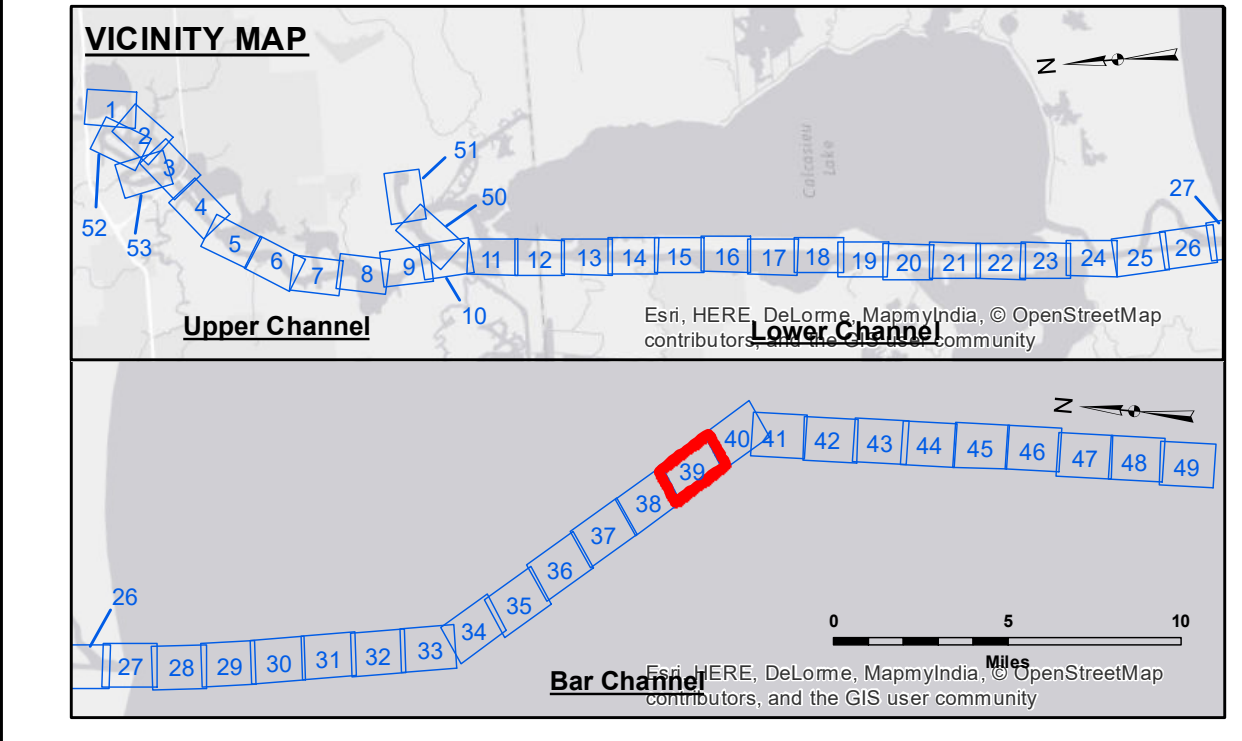
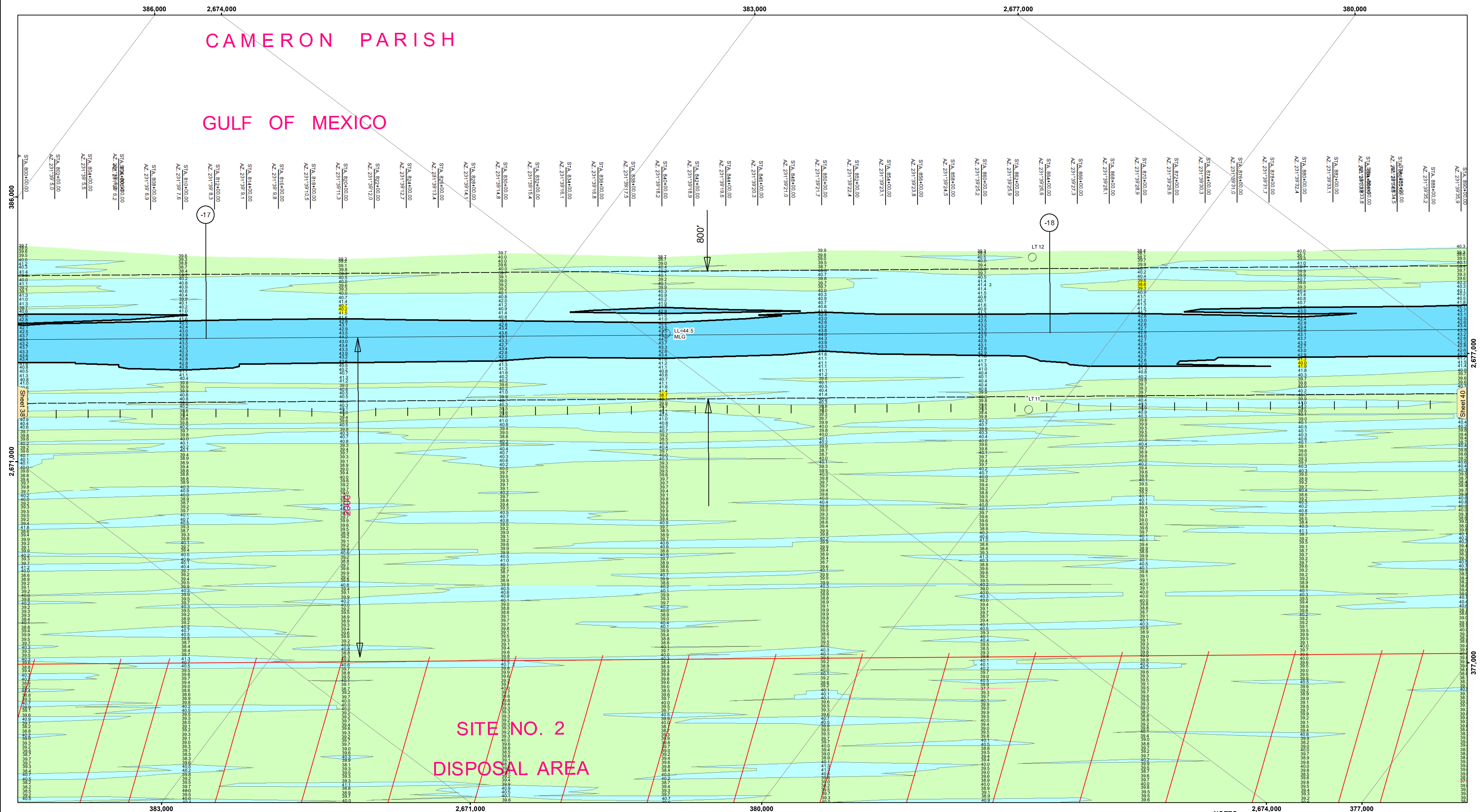


CAMERON PARISH

GULF OF MEXICO

SITE NO. 2
DISPOSAL AREA



LEGEND

- Federal Navigation Channel
- Federal Navigation Center Line
- As-built Pipeline/Cable
- Unconfirmed Pipeline/Cable
- Project Depth Contour
- Cable Area
- Placement Area
- Anchorage Area
- Obstruction Point
- Wrecks-Submerged
- Fluff Thickness (feet)*
- Shoalest Sounding**
- Beacon, General
- Red Navigation Buoy
- Green Navigation Buoy
- 15' and above
- 15' to -20'
- 20' to -25'
- 25' to -32'
- 32' to -38'
- 38' to -40'
- 40' to -42'
- 42' and below

Gage Reading: CAMERON: 3.51 MLG
 Sea Conditions: 2-3'
 Vessel Name: M/V TECHE
 Survey Type: CONDITION
 Sounding Frequency***: LOW

NOTES:
 Horizontal Coordinate System:
 North American Datum of 1983 (NAD83), projected to the State Plane
 Coordinate System (SPCS), Louisiana South Zone. Distance units in U.S. Survey Feet.

Vertical Datum:
 Soundings are shown in feet and indicate depths below Mean Low Gulf Datum (MLG).
 Datum Relationships for gage 73650 as of December 2013:
 0.0' NAVD83 (2009.55) = 1.3' MLLW = 2.3' MLG or 0.0' MLLW = 1.0' MLG

Distances on the Calcasieu River are shown at 1 mile intervals.

The location of navigation aids are base on and provided by the U.S. Coast Guard and USACE survey crews.

2015 Aerial Photography data source: NAIP

Reference is N.O.A. Navigation Chart No. 11339.

* Difference between high and low frequency elevations where greater than 1.0'.
 ** Shoalest Sounding per Quarter per Reach.

US Army Corps
of Engineers
District: CEMVN

DISCLAIMER
 Distribution Liability: The data represents the results of data collection for a specific project. The user is responsible for the accuracy, reliability, usability, or availability for any particular purpose of the information. The user is responsible for the accuracy, reliability, usability, or availability for any particular purpose of the information. The user is responsible for the accuracy, reliability, usability, or availability for any particular purpose of the information. The user is responsible for the accuracy, reliability, usability, or availability for any particular purpose of the information.

U.S. ARMY CORPS OF ENGINEERS NEW ORLEANS DISTRICT		
Submitted:	Surveyed By: SR, JH	Checked By: AC
Recommended:	Plotted By: BD	
Approved:	Chart Survey Section	
	Chief, Waterways Maintenance Section	

CALCASIEU SHIP CHANNEL
 BAR SHEET 39
 CR_39_BAR_20171114_CS
 14 November 2017

Sheet
Reference
Number
39 of 53