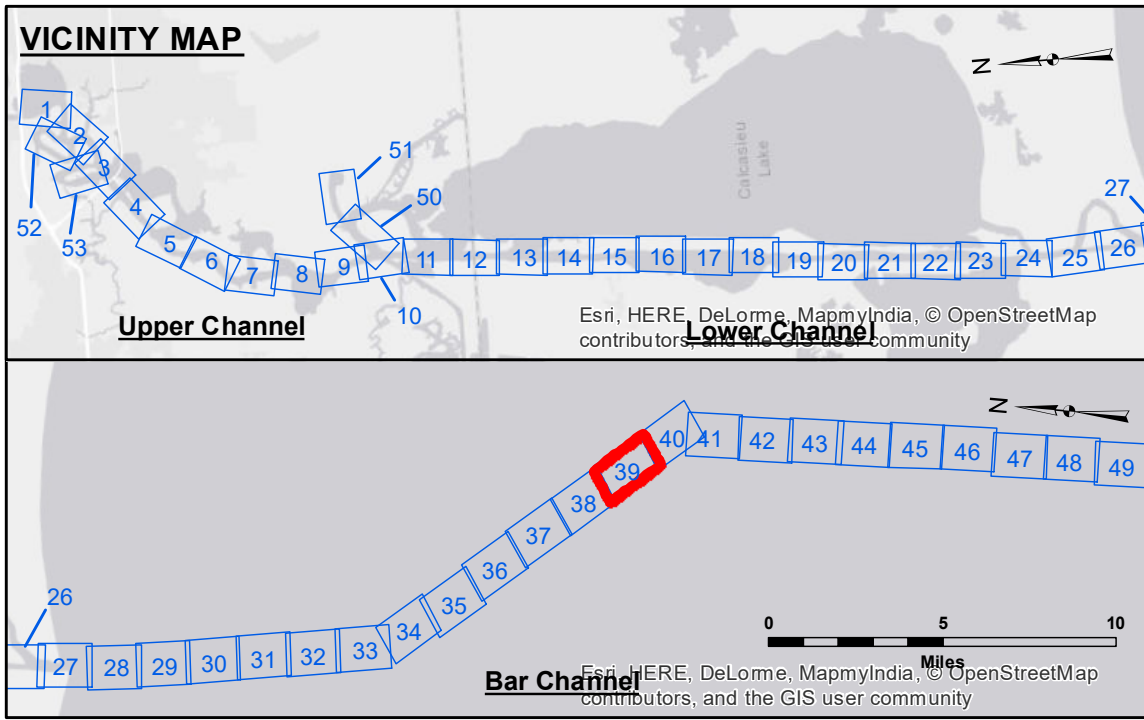
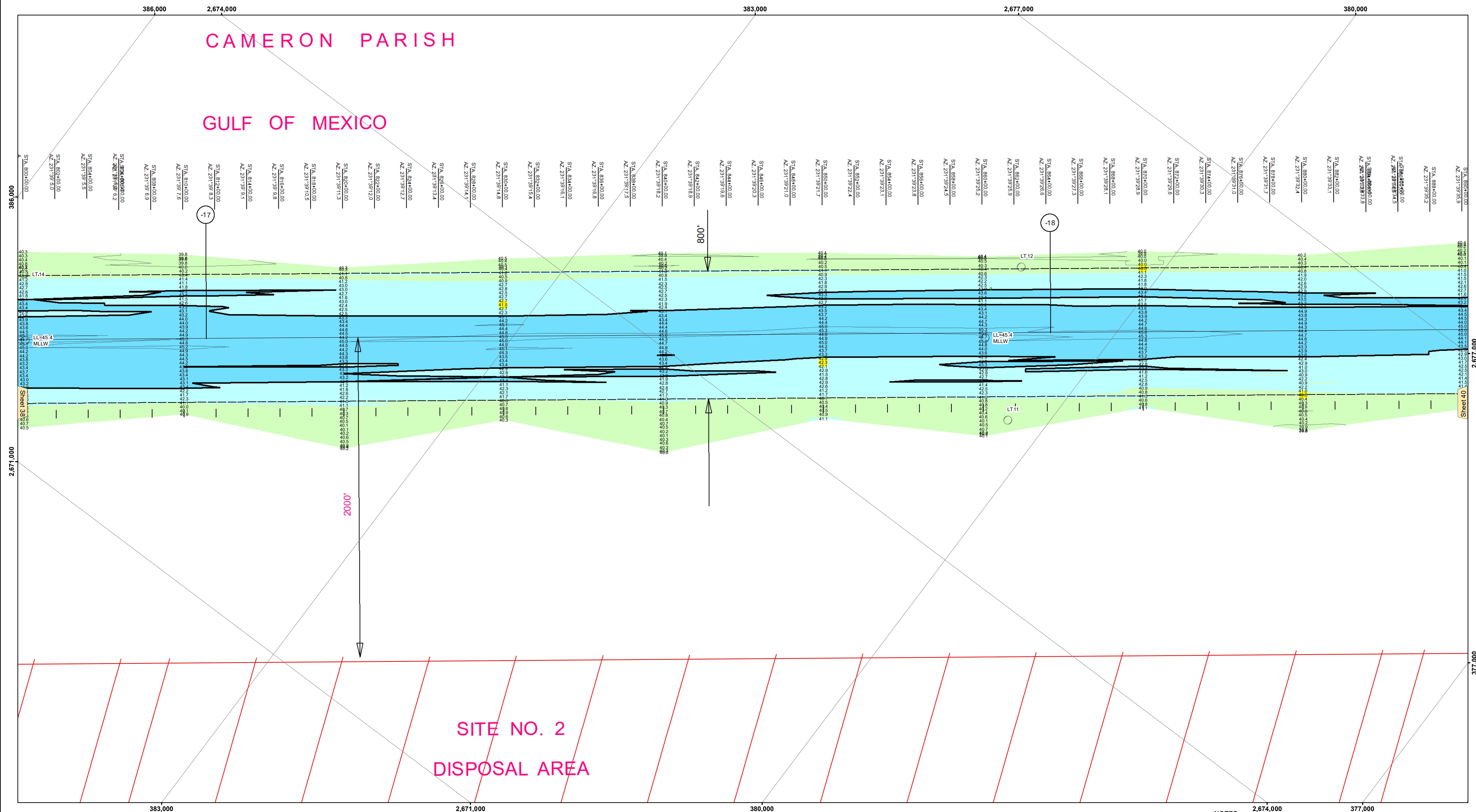


CAMERON PARISH

GULF OF MEXICO

SITE NO. 2
DISPOSAL AREA



LEGEND			
--- Federal Navigation Channel	○ Cable Area	3 Fluff Thickness (feet)*	-16' and above
— Federal Navigation Center Line	□ Placement Area	● Shoalest Sounding**	-16' to -21'
— As-built Pipeline/Cable	□ Anchorage Area	★ Beacon, General	-21' to -26'
..... Unconfirmed Pipeline/Cable	⊗ Obstruction Point	◆ Red Navigation Buoy	-26' to -33'
— Project Depth Contour	⚓ Wrecks-Submerged	◆ Green Navigation Buoy	-33' to -39'
			-39' to -41'
			-41' to -43'
			-43' and below

Gage Reading: CAMERON: 1.55 MLLW AVG.
 Sea Conditions: CALM
 Vessel Name: M/V LAFORUCHE
 Survey Type: CONDITION
 Sounding Frequency***: LOW

NOTES:
 1. Coordinate System: North American Datum of 1983 (NAD83), projected to the State Plane Coordinate System (SPCS), Louisiana South Zone. Distance units in U.S. Survey Feet.
 2. Vertical Datum: Soundings are shown in feet and indicate depths below Mean Lower Low Water Datum (MLLW). Datum Relationships for gage 73650 as of December 2013: 0.0' NAVD88 (2009.55) = 1.3' MLLW = 2.3' MLG or 0.0' MLLW = 1.0' MLG
 3. Distances on the Calcasieu River are shown at 1 mile intervals.
 4. The location of navigation aids are base on and provided by the U.S. Coast Guard and USACE survey crews.
 5. 2015 Aerial Photography data source: NAIP
 Reference is N.O.A.A. Navigation Chart No. 11339.
 * Difference between high and low frequency elevations where greater than 1.0'.
 ** Shoalest Sounding per Quarter per Reach.
 *** High frequency (200 kHz) survey data represents the first signal return at a sounding location and will include suspended solids, known as "fluff", if present. Low frequency (20 kHz) survey data normally penetrates through this "fluff" layer to depict elevations of consolidated bottom material. Low frequency accuracies may vary depending on channel conditions and fathometer settings.



DISCLAIMER:
 The information depicted on this map represents the results of a hydrographic survey conducted by the United States Army Corps of Engineers. The user is responsible for the accuracy, completeness, and reliability of the information for any particular purpose of the user. The user is advised that the information is provided under no liability whatsoever to any person by reason of any use made hereof. These data are based on the best available information and are subject to change without notice. The user is advised that the information is provided for informational purposes only and should not be used for any other purpose. The user is advised that the information is provided for informational purposes only and should not be used for any other purpose. The user is advised that the information is provided for informational purposes only and should not be used for any other purpose.

Submitted:	Surveyed By: JH/PS
Recommended:	Plotted By: BD
Approved:	Checked By: AC

U.S. ARMY CORPS OF ENGINEERS
NEW ORLEANS DISTRICT
 Chief, Waterways Maintenance Section

CALCASIEU SHIP CHANNEL
BAR SHEET 39
CR_39_BAR_20190115_CS
15 January 2019

Sheet Reference Number
39 of 53

Revision Number:
3.13-20160811