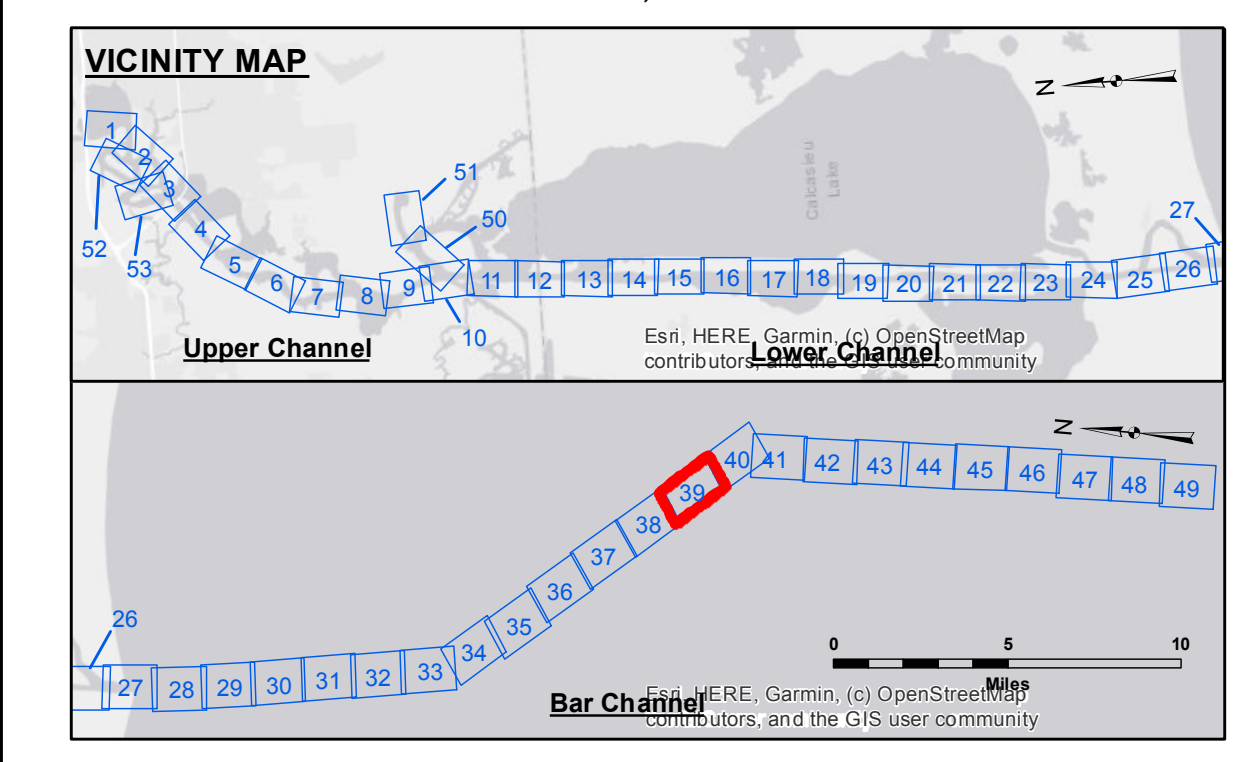
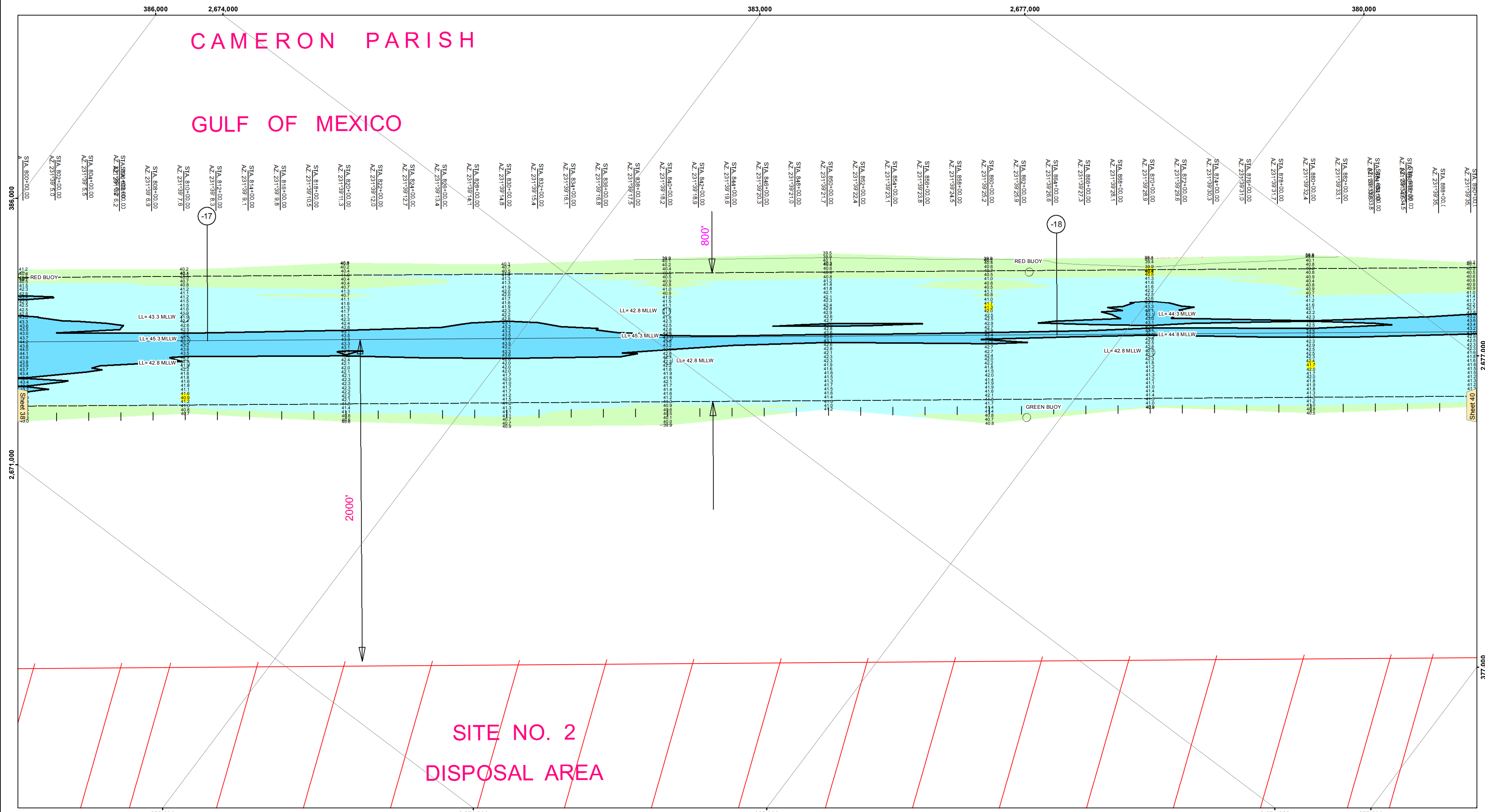


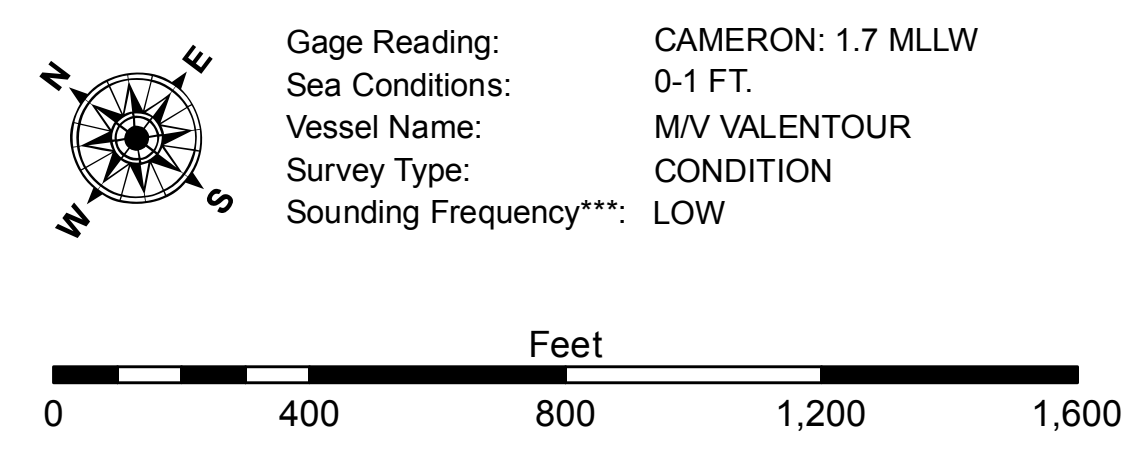
CAMERON PARISH

GULF OF MEXICO

SITE NO. 2 DISPOSAL AREA



LEGEND			
--- Federal Navigation Channel	○ Cable Area	3 Fluff Thickness (feet)*	-16' and above
— Federal Navigation Center Line	□ Placement Area	● Shoalest Sounding**	-16' to -21'
— As-built Pipeline/Cable	⊗ Anchorage Area	★ Beacon, General	-21' to -26'
..... Unconfirmed Pipeline/Cable	⊗ Obstruction Point	◆ Red Navigation Buoy	-26' to -33'
— Project Depth Contour	⚓ Wrecks-Submerged	◆ Green Navigation Buoy	-33' to -39'
			-39' to -41'
			-41' to -43'
			-43' and below



NOTES:
 Coordinate System: North American Datum of 1983 (NAD83), projected to the State Plane Coordinate System (SPCS), Louisiana South Zone. Distance units in U.S. Survey Feet.
 Vertical Datum: Soundings are shown in feet and indicate depths below Mean Lower Low Water Datum (MLLW). Datum Relationships for gage 73650 as of December 2013: 0.0' NAVD88 (2009.55) = 1.3' MLLW = 2.3' MLG or 0.0' MLLW = 1.0' MLG
 Distances on the Calcasieu River are shown at 1 mile intervals.
 The location of navigation aids are based on and provided by the U.S. Coast Guard and USACE survey crews.
 2015 Aerial Photography data source: NAIP
 Reference is N.O.A.A. Navigation Chart No. 11339.
 * Difference between high and low frequency elevations where greater than 1.0'.
 ** Shoalest Sounding per Quarter per Reach.
 *** High frequency (200 kHz) survey data represents the first signal return at a sounding location and will include suspended solids, known as "fluff", if present. Low frequency (20 kHz) survey data normally penetrates through this "fluff" layer to depict elevations of consolidated bottom material. Low frequency accuracies may vary depending on channel conditions and fathometer settings.



DISCLAIMER:
 The information depicted on this map represents the results of a survey conducted by the United States Army Corps of Engineers. The United States Government furnishes these data and the recipient accepts and uses them with the express understanding that the United States Government makes no warranty, express or implied, concerning the accuracy, completeness, reliability, usability or suitability for any particular purpose of the data. The recipient shall be responsible for the accuracy of the data under no liability whatsoever to any person by reason of any use made of the data. These data are provided to the recipient under the terms of the license agreement between the United States Government and the recipient. The recipient may not transfer these data to others without also transferring the license agreement. The information depicted on this map represents the results of a survey conducted by the United States Army Corps of Engineers. The United States Government furnishes these data and the recipient accepts and uses them with the express understanding that the United States Government makes no warranty, express or implied, concerning the accuracy, completeness, reliability, usability or suitability for any particular purpose of the data. The recipient shall be responsible for the accuracy of the data under no liability whatsoever to any person by reason of any use made of the data. These data are provided to the recipient under the terms of the license agreement between the United States Government and the recipient. The recipient may not transfer these data to others without also transferring the license agreement.

U.S. ARMY CORPS OF ENGINEERS NEW ORLEANS DISTRICT		
Submitted:	Surveyed By: RYLAND/ADAMS	Plotted By: JH
Recommended:	Checked By: JH	Checked By: JH
Approved:	Chief, Waterways Maintenance Section	

**CALCASIEU SHIP CHANNEL
 BAR SHEET 39
 CR_39_BAR_20210825_CS
 25 August 2021**

**Sheet Reference Number
 39 of 53**