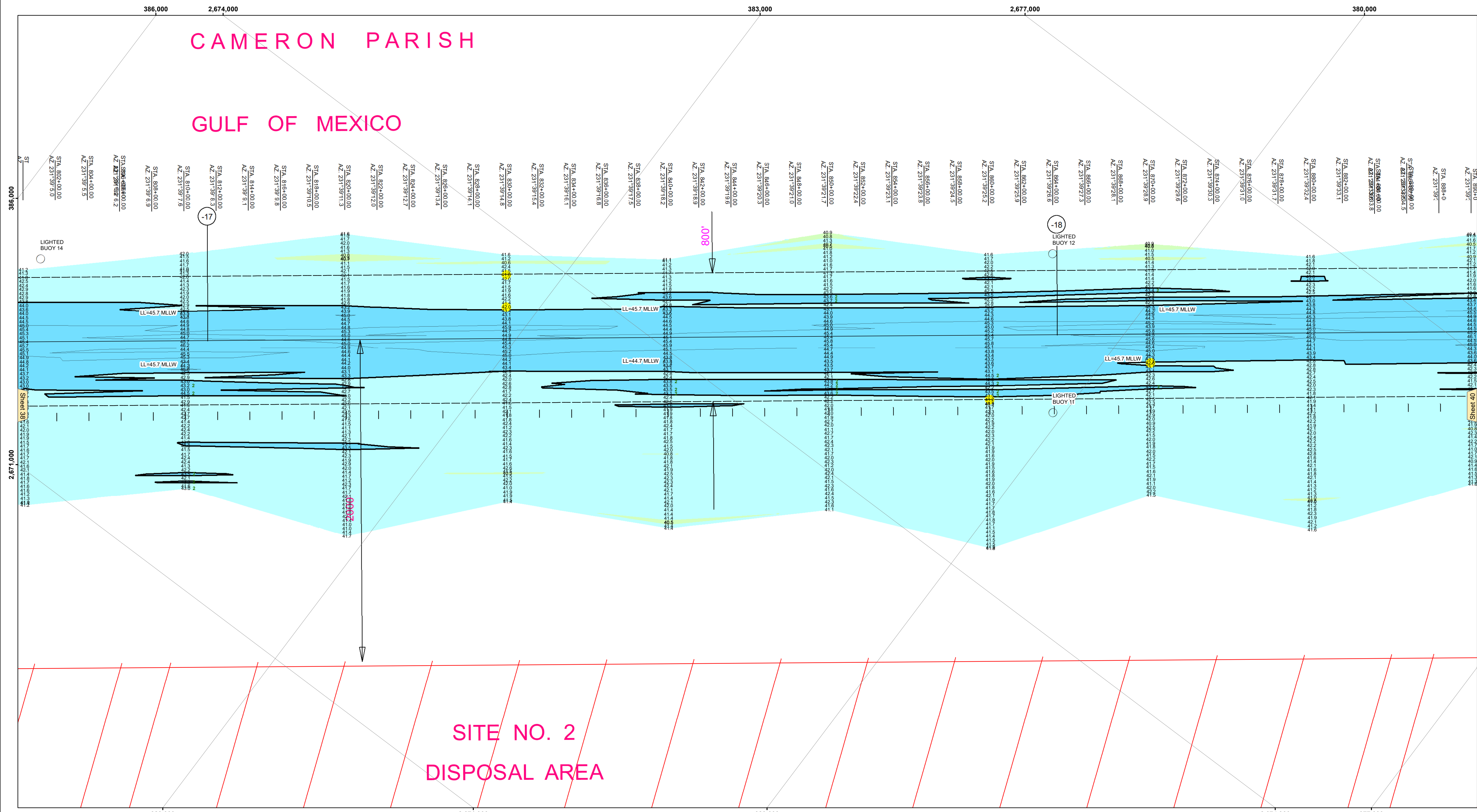
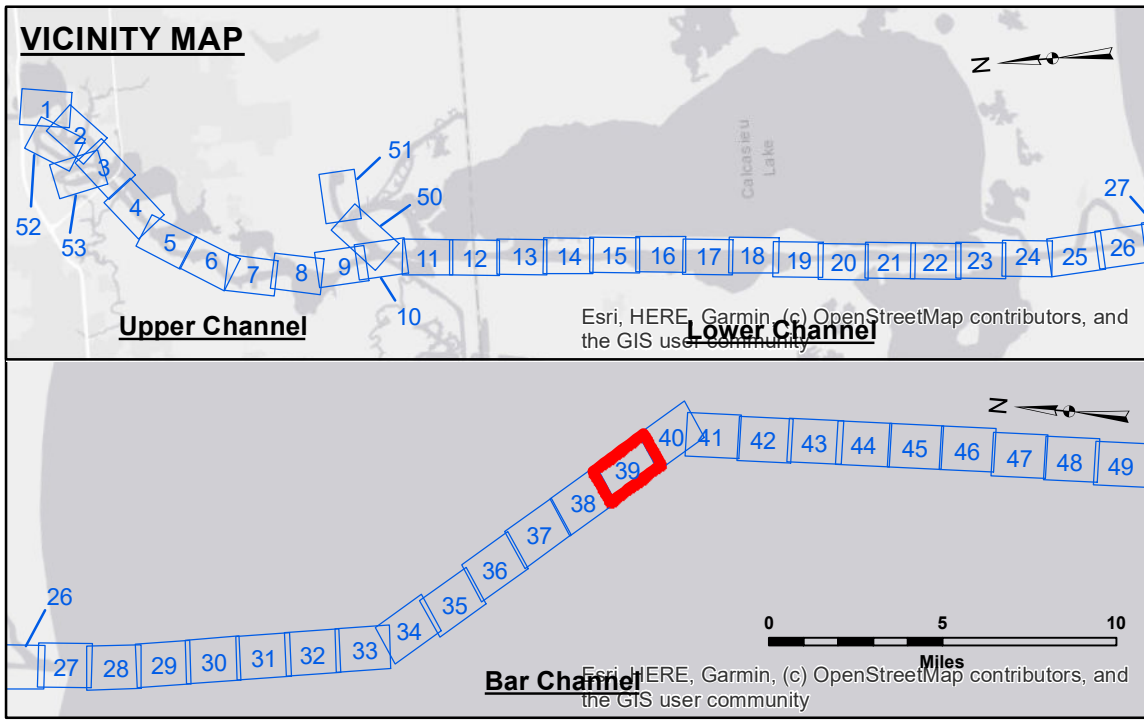


CAMERON PARISH

GULF OF MEXICO



SITE NO. 2 DISPOSAL AREA



LEGEND			
--- Federal Navigation Channel	○ Cable Area	3 Fluff Thickness (feet)*	-16' and above
— Federal Navigation Center Line	□ Placement Area	● Shoalest Sounding**	-16' to -21'
— As-built Pipeline/Cable	□ Anchorage Area	★ Beacon, General	-21' to -26'
..... Unconfirmed Pipeline/Cable	⊗ Obstruction Point	◆ Red Navigation Buoy	-26' to -33'
— Project Depth Contour	⚓ Wrecks-Submerged	◇ Green Navigation Buoy	-33' to -39'
			-39' to -41'
			-41' to -43'
			-43' and below

Gage Reading: CAMERON AUTO: 1.3 MLLW AVG
 Sea Conditions: CALM
 Vessel Name: MV TECHE
 Survey Type: CONDITION
 Sounding Frequency***: LOW

NOTES:
 1. Coordinate System: North American Datum of 1983 (NAD83), projected to the State Plane Coordinate System (SPCS), Louisiana South Zone. Distance units in U.S. Survey Feet.
 2. Vertical Datum: Soundings are shown in feet and indicate depths below Mean Lower Low Water Datum (MLLW). Datum Relationships for gage 73650 as of December 2013: 0.0' NAVD88 (2009.55) = 1.3' MLLW = 2.3' MLG or 0.0' MLLW = 1.0' MLG
 3. Distances on the Calcasieu River are shown at 1 mile intervals.
 4. The location of navigation aids are base on and provided by the U.S. Coast Guard and USACE survey crews.
 5. 2015 Aerial Photography data source: NAIP
 6. Reference is N.O.A.A. Navigation Chart No. 11339.
 7. * Difference between high and low frequency elevations where greater than 1.0'.
 8. ** Shoalest Sounding per Quarter per Reach.
 9. *** High frequency (200 kHz) survey data represents the first signal return at a sounding location and will include suspended solids, known as "fluff", if present. Low frequency (20 kHz) survey data normally penetrates through this "fluff" layer to depict elevations of consolidated bottom material. Low frequency accuracies may vary depending on channel conditions and fathometer settings.



DISCLAIMER:
 The United States Government furnishes this data and the recipient accepts and uses them with the express understanding that the data is provided for informational purposes only. It is not to be used for any purpose other than that for which it was prepared, and the user is responsible for the accuracy, completeness, reliability, usability or suitability of the data for any particular purpose. The recipient shall be responsible for the accuracy, completeness, reliability, usability or suitability of the data for any particular purpose. The recipient shall be responsible for the accuracy, completeness, reliability, usability or suitability of the data for any particular purpose. The recipient shall be responsible for the accuracy, completeness, reliability, usability or suitability of the data for any particular purpose. The recipient shall be responsible for the accuracy, completeness, reliability, usability or suitability of the data for any particular purpose.

U.S. ARMY CORPS OF ENGINEERS NEW ORLEANS DISTRICT		
Submitted:	Surveyed By: SP-JS	Plotted By: AO
Recommended:	Checked By: AC	Checked By: AC
Approved:		

CALCASIEU SHIP CHANNEL
BAR SHEET 39
CR_39_BAR_20230503_CS
03 May 2023

Sheet Reference Number
39 of 53