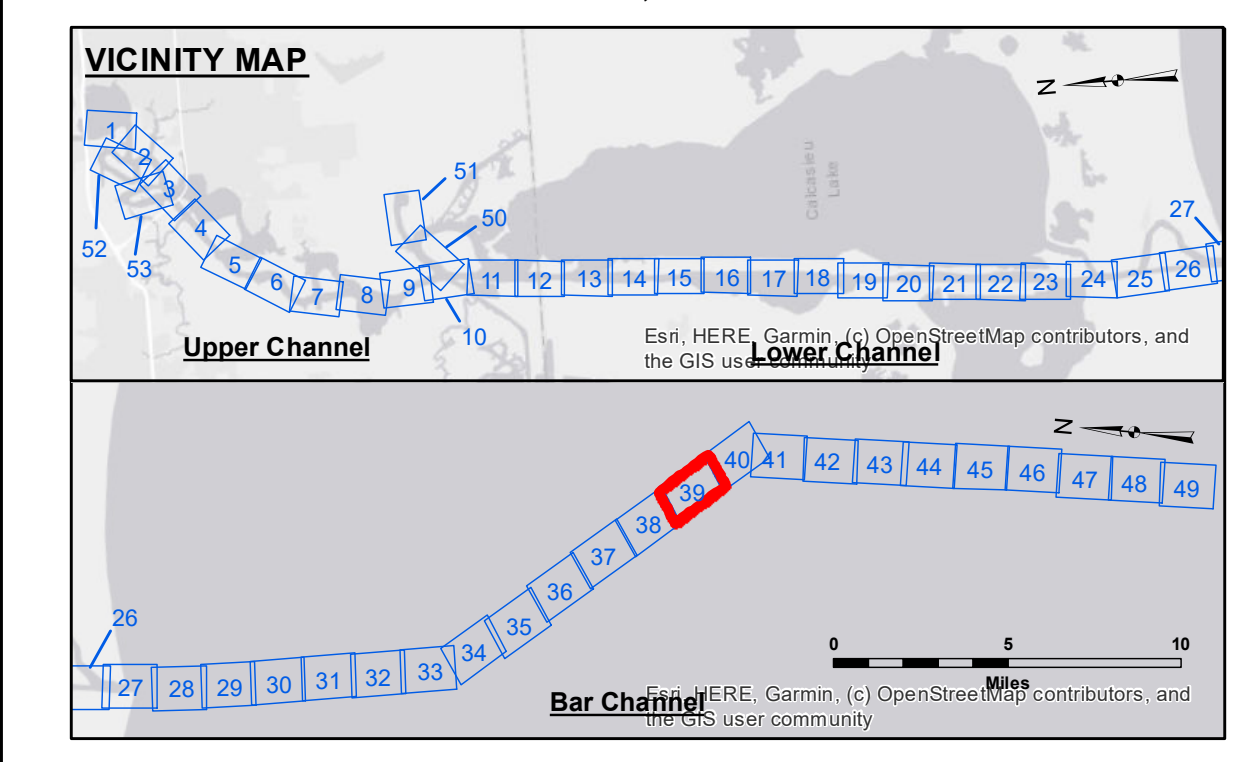
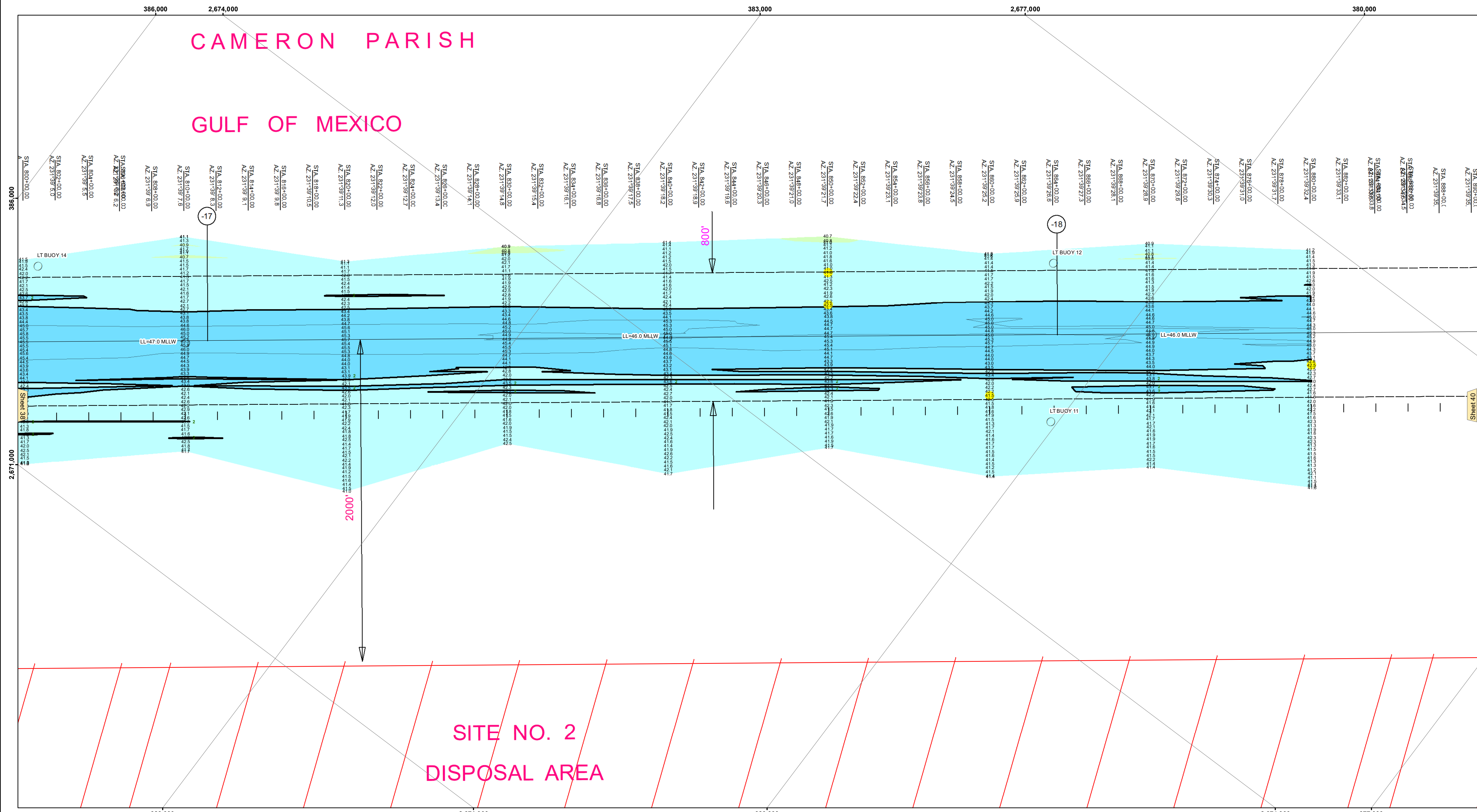


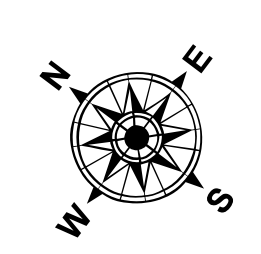
# CAMERON PARISH

# GULF OF MEXICO

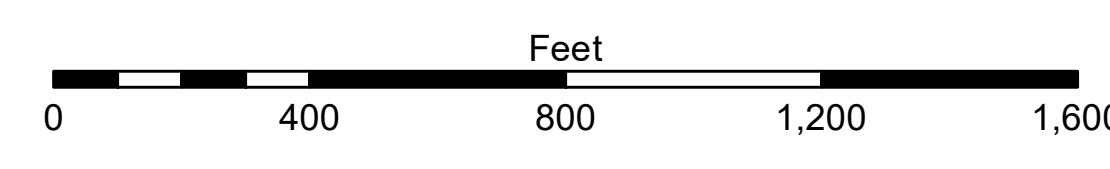
# SITE NO. 2 DISPOSAL AREA



LEGEND			
	Federal Navigation Channel		Cable Area
	Federal Navigation Center Line		Placement Area
	As-built Pipeline/Cable		Anchorage Area
	Unconfirmed Pipeline/Cable		Obstruction Point
	Project Depth Contour		Wrecks-Submerged
	Fluff Thickness (feet)*		Shoalest Sounding**
	Beacon, General		Red Navigation Buoy
	Green Navigation Buoy		



Gage Reading: CAMERON: 1.96 MLLW AVG.  
 Sea Conditions: CALM  
 Vessel Name: MV TECHE  
 Survey Type: CONDITION  
 Sounding Frequency\*\*\*: LOW



**NOTES:**  
 Coordinate System: North American Datum of 1983 (NAD83), projected to the State Plane Coordinate System (SPCS), Louisiana South Zone. Distance units in U.S. Survey Feet.

Vertical Datum: Soundings are shown in feet and indicate depths below Mean Lower Low Water Datum (MLLW). Datum Relationships for gage 73650 as of December 2013: 0.0' NAVD88 (2009.55) = 1.3' MLLW = 2.3' MLG or 0.0' MLLW = 1.0' MLG

Distances on the Calcasieu River are shown at 1 mile intervals. The location of navigation aids are based on and provided by the U.S. Coast Guard and USACE survey crews.

2015 Aerial Photography data source: NAIP  
 Reference is N.O.A.A. Navigation Chart No. 11339.

\* Difference between high and low frequency elevations where greater than 1.0'.  
 \*\* Shoalest Sounding per Quarter per Reach.

\*\*\* High frequency (200 kHz) survey data represents the first signal return at a sounding location and will include suspended solids, known as "fluff", if present. Low frequency (20 kHz) survey data normally penetrates through this "fluff" layer to depict elevations of consolidated bottom material. Low frequency accuracies may vary depending on channel conditions and fathometer settings.



**DISCLAIMER:**  
 The information depicted on this map represents the results of a hydrographic survey conducted by the U.S. Army Corps of Engineers. The user is responsible for the accuracy, reliability, usability, or suitability of the data for any purpose other than that for which it was collected. The user is responsible for the accuracy, reliability, usability, or suitability of the data for any purpose other than that for which it was collected. The user is responsible for the accuracy, reliability, usability, or suitability of the data for any purpose other than that for which it was collected.

U.S. ARMY CORPS OF ENGINEERS NEW ORLEANS DISTRICT		
Submitted:	Surveyed By: SP-US	Plotted By: BD
Recommended:	Checked By: AD/JH	Checked By: AD/JH
Approved:	Chief, Waterways Maintenance Section	

**CALCASIEU SHIP CHANNEL  
 BAR SHEET 39  
 CR\_39\_BAR\_20230911\_CS  
 11 September 2023**

**Sheet Reference Number  
 39 of 53**