

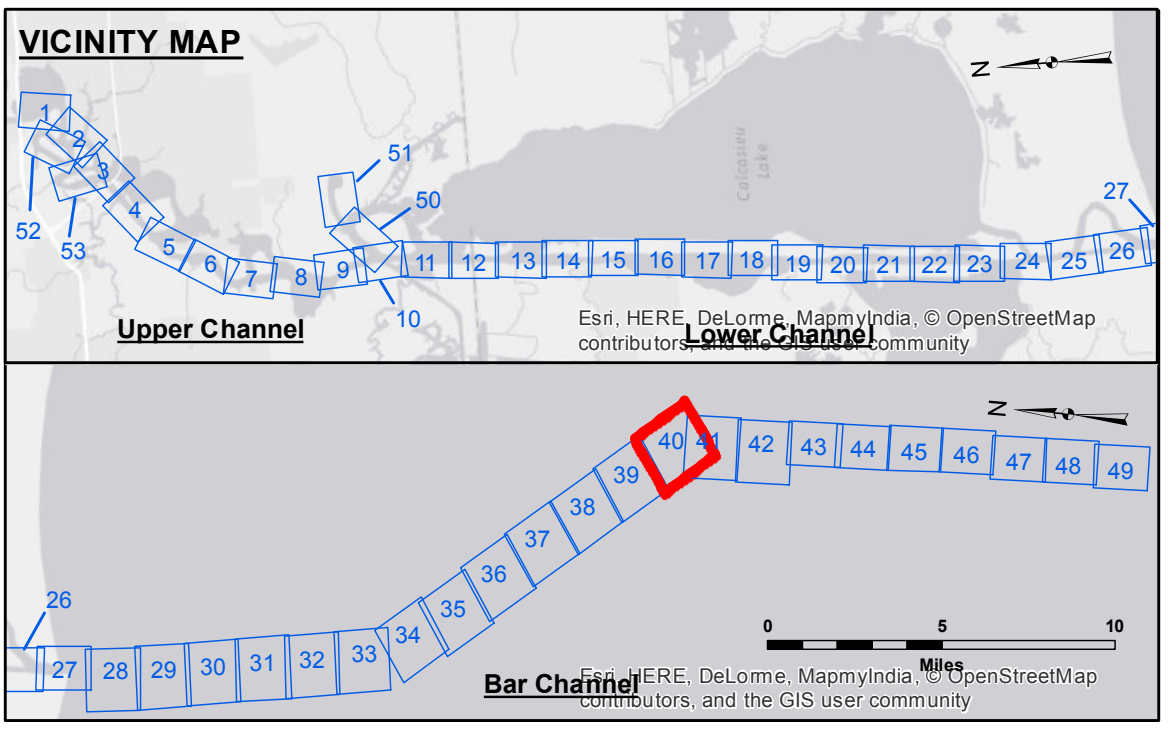
DISCLAIMER
 The United States Government hereby disclaims any liability for the use of the data contained herein for purposes other than those intended by the Corps of Engineers. The user is responsible for the accuracy and reliability of the data for any purpose other than that intended by the Corps of Engineers. The user is responsible for the accuracy and reliability of the data for any purpose other than that intended by the Corps of Engineers. The user is responsible for the accuracy and reliability of the data for any purpose other than that intended by the Corps of Engineers. The user is responsible for the accuracy and reliability of the data for any purpose other than that intended by the Corps of Engineers.

Submitted By:	SR, JH
Prepared By:	AO
Checked By:	AO
Approved By:	AO

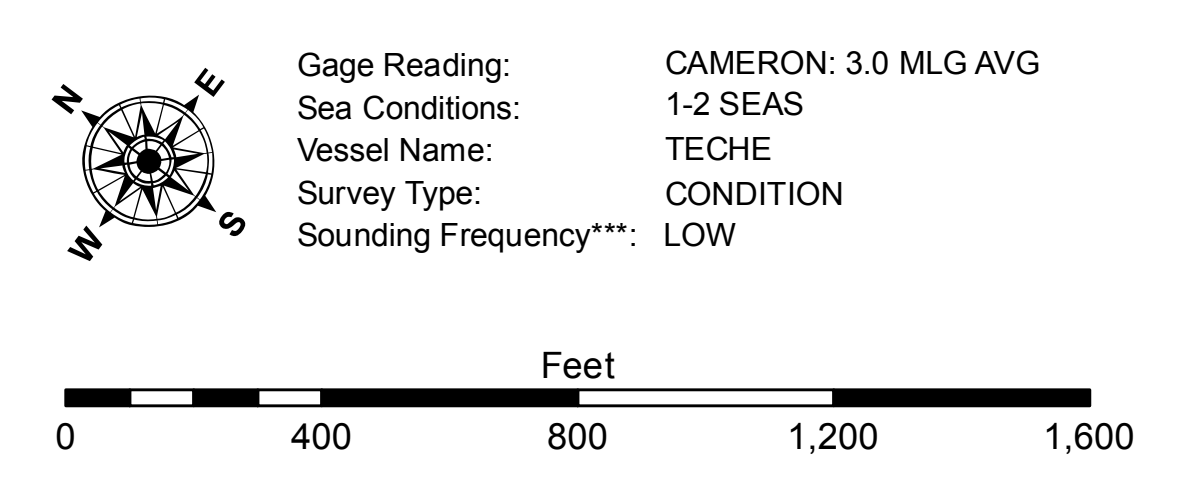
CALCASIEU SHIP CHANNEL
BAR SHEET 40
CR_40_BARX_20170705_CS
05 July 2017

Sheet Reference Number
40 of 53

Revision Number: 1:12-2016611



LEGEND	
--- Federal Navigation Channel	● Cable Area
— Federal Navigation Center Line	□ Placement Area
— As-built Pipeline/Cable	□ Anchorage Area
--- Unconfirmed Pipeline/Cable	□ Obstruction Point
— Project Depth Contour	✈ Wrecks-Submerged
3 Fluff Thickness (feet)*	★ Beacon, General
● Shoalest Sounding**	★ Red Navigation Buoy
★ Beacon, General	◆ Green Navigation Buoy
● -15' and above	
● -15' to -20'	
● -20' to -25'	
● -25' to -32'	
● -32' to -38'	
● -38' to -40'	
● -40' to -42'	
● -42' and below	



NOTES:
 Horizontal Coordinate System:
 North American Datum of 1983 (NAD83), projected to the State Plane Coordinate System (SPCS), Louisiana South Zone. Distance units in U.S. Survey Feet.
 Vertical Datum:
 Soundings are shown in feet and indicate depths below Mean Low Gulf Datum (MLG). Datum Relationships for page 73650 as of December 2013:
 0.0' NAVD83 (2009.55) = 1.3' MLLW = 2.3' MLG or 0.0' MLLW = 1.0' MLG
 Distances on the Calcasieu River are shown at 1 mile intervals.
 The location of navigation aids are based on and provided by the U.S. Coast Guard and USACE survey crews.
 2015 Aerial Photography data source: NAIP
 Reference is N.O.A. Navigation Chart No. 11339.
 * Difference between high and low frequency elevations where greater than 1.0'.
 ** Shoalest Sounding per Quarter per Reach.
 *** High frequency (200 kHz) survey data represents the first signal return at a sounding location and will include suspended solids, known as "fluff", if present. Low frequency (20 kHz) survey data normally penetrates through this "fluff" layer to depict elevations of consolidated bottom material. Low frequency accuracies may vary depending on channel conditions and fathometer settings.