

US Army Corps of Engineers
District: CEMVNV

DISCLAIMER: The United States Government furnishes this data for the use of the user in accordance with the terms of the license. The user assumes all liability for any use of the data, including but not limited to, the use of the data for purposes not intended by the Corps of Engineers. The user is responsible for the accuracy, reliability, and completeness of the data for any use. The user is not authorized to reproduce or distribute the data for any purpose other than that intended by the Corps of Engineers. The user is not authorized to use the data for any purpose that may cause injury, damage, or loss of life or property. The user is not authorized to use the data for any purpose that may be in violation of any applicable laws or regulations. The user is not authorized to use the data for any purpose that may be in violation of any applicable laws or regulations. The user is not authorized to use the data for any purpose that may be in violation of any applicable laws or regulations.

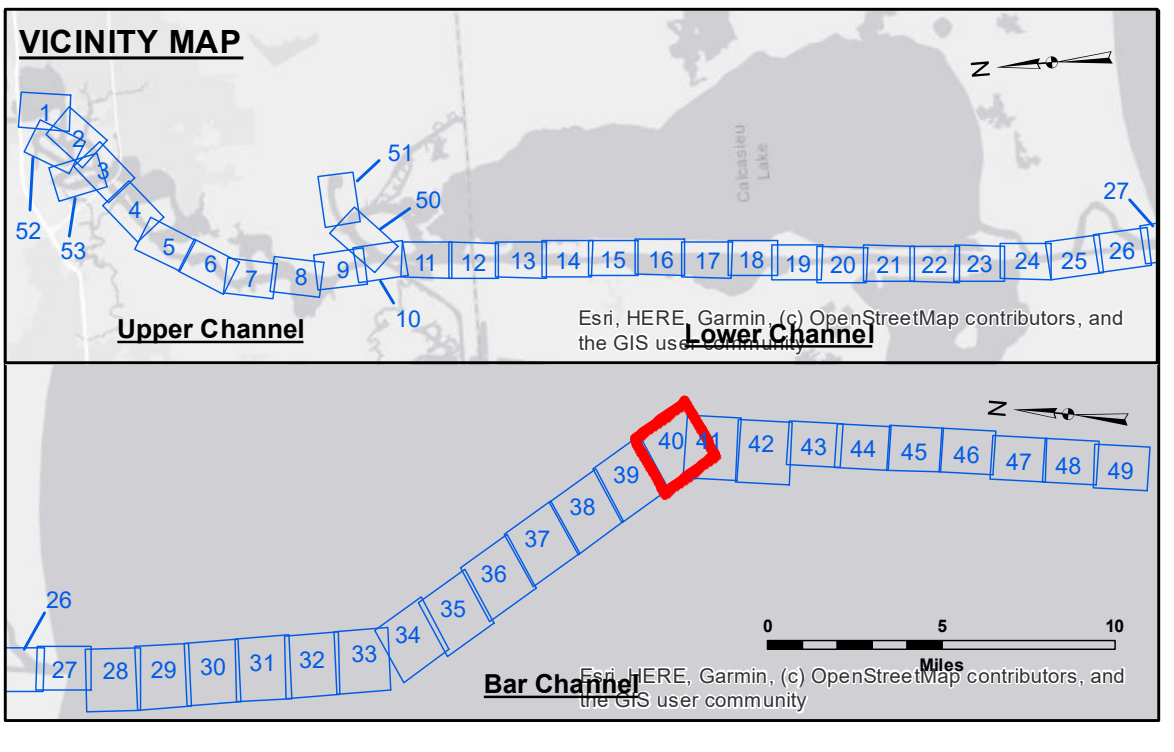
Submitted By:	JDH, JA
Reviewed By:	AO
Checked By:	AO

U.S. ARMY CORPS OF ENGINEERS
NEW ORLEANS DISTRICT

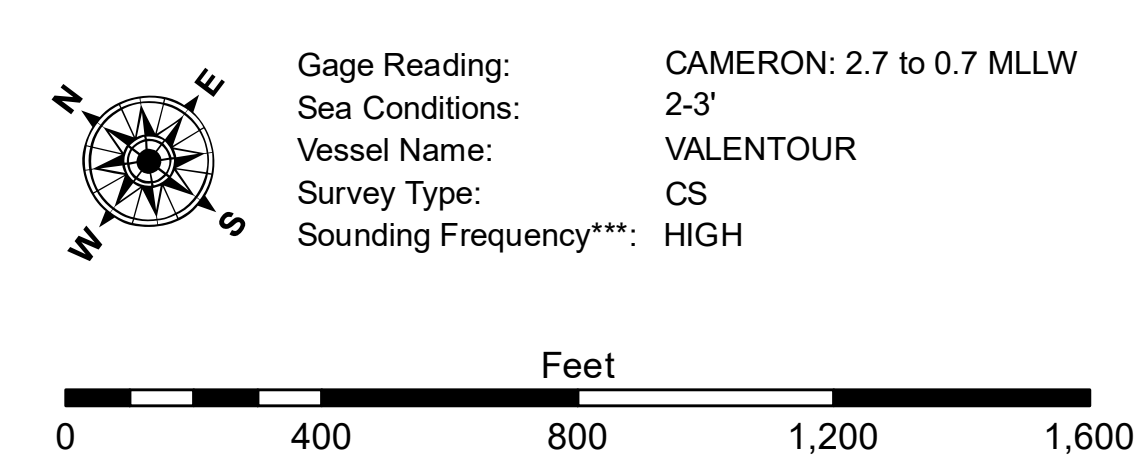
CALCASIEU SHIP CHANNEL
BAR SHEET 40
CR_40_BAFX_20190731_CS
31 July 2019

Sheet Reference Number
40 of 53

Revision Number:
40-30190731



LEGEND	
--- Federal Navigation Channel	● Cable Area
— Federal Navigation Center Line	■ Placement Area
— As-built Pipeline/Cable	□ Anchorage Area
--- Unconfirmed Pipeline/Cable	⊗ Obstruction Point
— Project Depth Contour	⚓ Wrecks-Submerged
3 Fluff Thickness (feet)*	★ Beacon, General
● Shoalest Sounding**	★ Red Navigation Buoy
● Fluff Thickness (feet)*	◆ Green Navigation Buoy
● -16' and above	
● -16' to -21'	
● -21' to -26'	
● -26' to -33'	
● -33' to -39'	
● -39' to -41'	
● -41' to -43'	
● -43' and below	



NOTES:
Horizontal Coordinate System:
North American Datum of 1983 (NAD83), projected to the State Plane Coordinate System (SPCS), Louisiana South Zone. Distance units in U.S. Survey Feet.
Vertical Datum:
Soundings are shown in feet and indicate depths below Mean Lower Low Water Datum (MLLW).
Datum Relationships for page 73650 as of December 2013:
0.0' NAVD88 (2009.55) = 1.3' MLLW = 2.3' MLG or 0.0' MLLW = 1.0' MLG
Distances on the Calcasieu River are shown at 1 mile intervals.
The location of navigation aids are based on and provided by the U.S. Coast Guard and USACE survey crews.
2015 Aerial Photography data source: NAIP
Reference is N.O.A. Navigation Chart No. 11339.
* Difference between high and low frequency elevations where greater than 1.0'.
** Shoalest Sounding per Quarter per Reach.
*** High frequency (200 kHz) survey data represents the first signal return at a sounding location and will include suspended solids, known as "fluff", if present. Low frequency (20 kHz) survey data normally penetrates through this "fluff" layer to depict elevations of consolidated bottom material. Low frequency accuracies may vary depending on channel conditions and fathometer settings.