



US Army Corps of Engineers
District: CEMVW

DISCLAIMER: The United States Government does not warrant, either expressly or impliedly, the accuracy, reliability, or completeness of the information contained herein. The user assumes all responsibility for the use of the information and for the results obtained therefrom. The user agrees to hold the United States Government harmless for any damages, including reasonable attorneys' fees, that may be incurred as a result of the use of the information. The user also agrees to indemnify and hold the United States Government harmless for any damages, including reasonable attorneys' fees, that may be incurred as a result of the use of the information. The user further agrees to release the United States Government from any and all claims, damages, and expenses, including reasonable attorneys' fees, that may be incurred as a result of the use of the information. The user also agrees to release the United States Government from any and all claims, damages, and expenses, including reasonable attorneys' fees, that may be incurred as a result of the use of the information. The user further agrees to release the United States Government from any and all claims, damages, and expenses, including reasonable attorneys' fees, that may be incurred as a result of the use of the information.

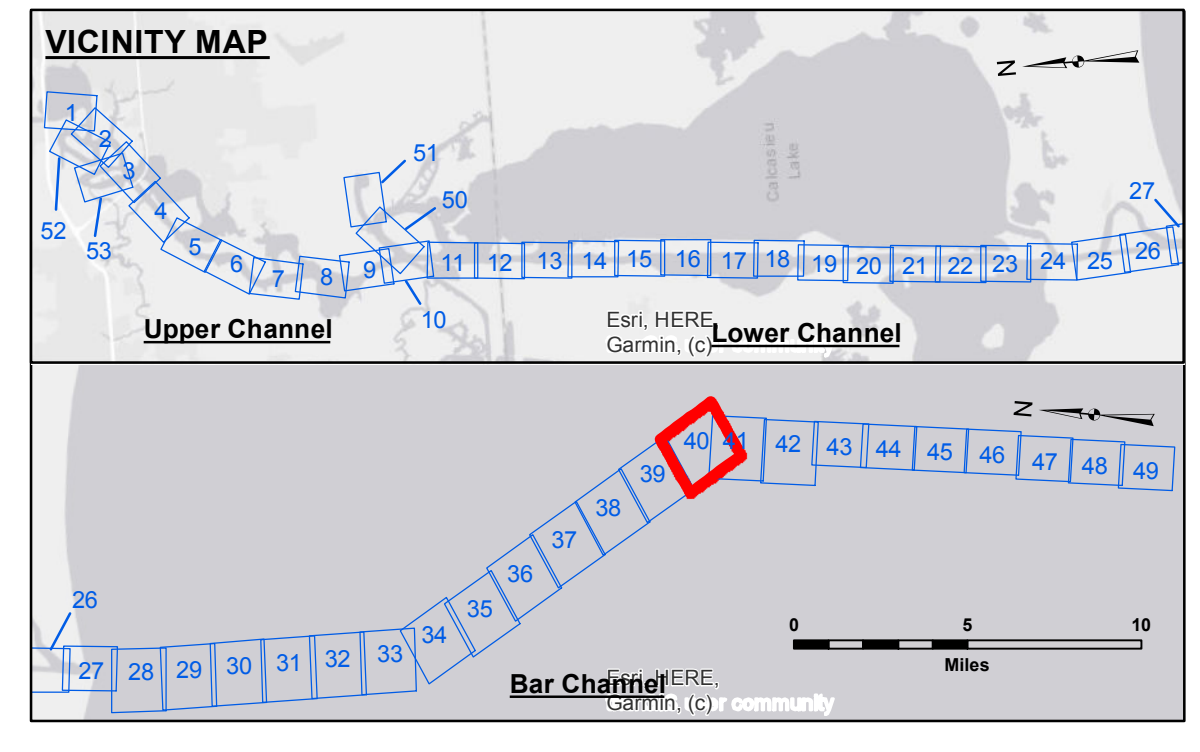
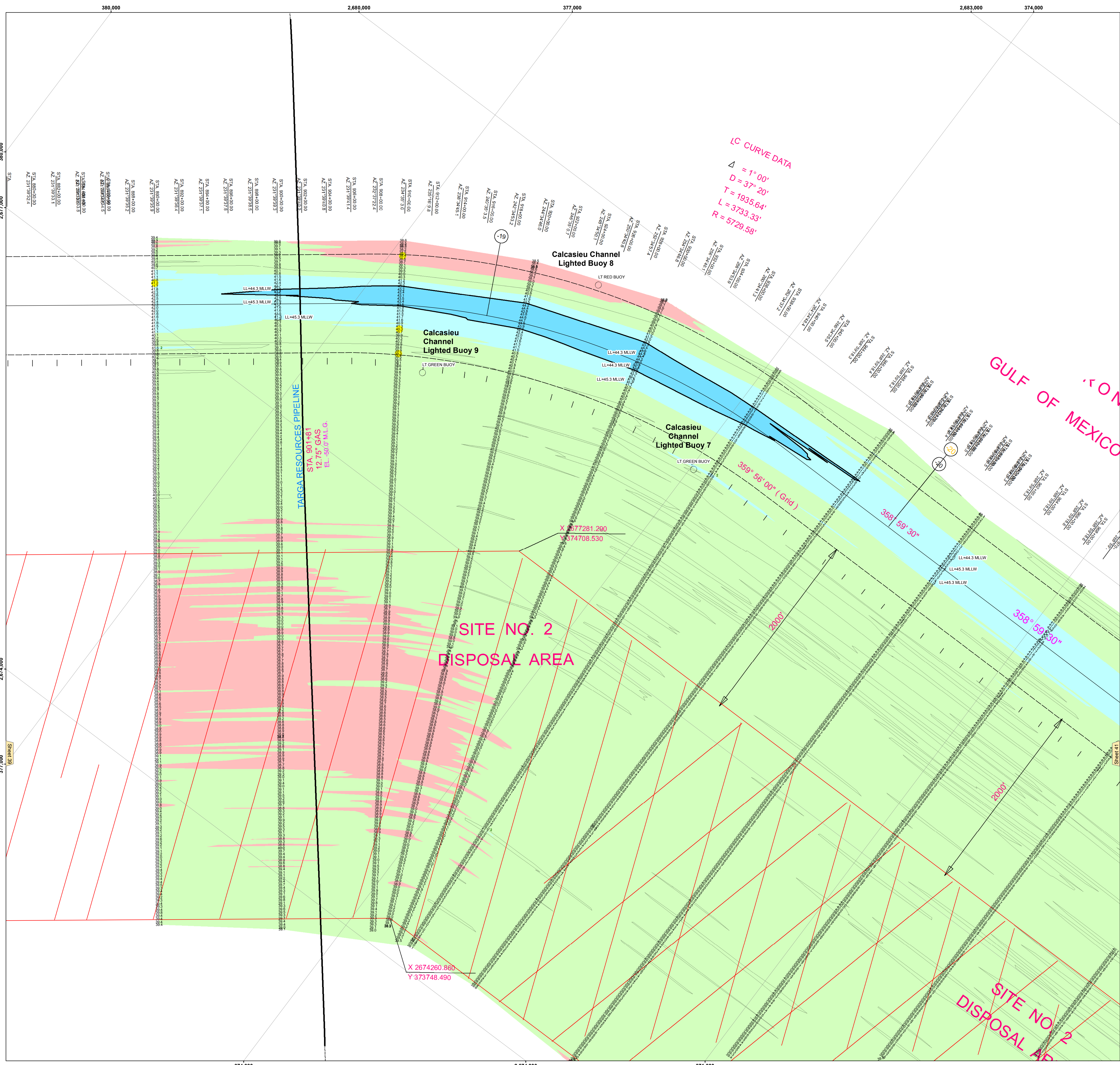
Submitted By:	Checked By:
Approved By:	Approved By:
Submitted:	Checked:
Recommended:	Approved:

U.S. ARMY CORPS OF ENGINEERS
NEW ORLEANS DISTRICT

**CALCASIEU SHIP CHANNEL
BAR SHEET 40
CR_40_BARX_20220302_CS
02 March 2022**

Sheet Reference Number
40 of 53

Revision Number:
4.2-2008(4/0)



LEGEND	
--- Federal Navigation Channel	● Cable Area
— Federal Navigation Center Line	□ Placement Area
— As-built Pipeline/Cable	□ Anchorage Area
--- Unconfirmed Pipeline/Cable	⊠ Obstruction Point
— Project Depth Contour	⚓ Wrecks-Submerged
3 Fluff Thickness (feet)*	★ Beacon, General
● Shoalest Sounding**	★ Red Navigation Buoy
● -16' and above	★ Green Navigation Buoy
● -21' to -21'	
● -21' to -26'	
● -26' to -33'	
● -33' to -39'	
● -39' to -41'	
● -41' to -43'	
● -43' and below	

Gage Reading: CAMERON: 0.67 MLLW AVG.
Sea Conditions: CALM
Vessel Name: MV LAFORCHE
Survey Type: CONDITION
Sounding Frequency***: HIGH/LOW

Vertical Datum:
Soundings are shown in feet and indicate depths below Mean Lower Low Water Datum (MLLW).
Datum Relationships for gage 73650 as of December 2013:
0.0' NAVD88 (2009.55) = 1.3' MLLW = 2.3' MLG or 0.0' MLLW = 1.0' MLG
Distances on the Calcasieu River are shown at 1 mile intervals.

The location of navigation aids are based on and provided by the U.S. Coast Guard and USACE survey crews.

2015 Aerial Photography data source: NAIP
Reference is N.O.A. Navigation Chart No. 11339.

* Difference between high and low frequency elevations where greater than 1.0'.
** Shoalest Sounding per Quarter per Reach.
*** High frequency (200 kHz) survey data represents the first signal return at a sounding location and will include suspended solids, known as "fluff", if present. Low frequency (20 kHz) survey data normally penetrates through this "fluff" layer to depict elevations of consolidated bottom material. Low frequency accuracies may vary depending on channel conditions and fathometer settings.

NOTES:
Horizontal Coordinate System:
North American Datum of 1983 (NAD83), projected to the State Plane Coordinate System (SPCS), Louisiana South Zone. Distance units in U.S. Survey Feet.

Vertical Datum:
Soundings are shown in feet and indicate depths below Mean Lower Low Water Datum (MLLW).
Datum Relationships for gage 73650 as of December 2013:
0.0' NAVD88 (2009.55) = 1.3' MLLW = 2.3' MLG or 0.0' MLLW = 1.0' MLG
Distances on the Calcasieu River are shown at 1 mile intervals.

The location of navigation aids are based on and provided by the U.S. Coast Guard and USACE survey crews.

2015 Aerial Photography data source: NAIP
Reference is N.O.A. Navigation Chart No. 11339.

* Difference between high and low frequency elevations where greater than 1.0'.
** Shoalest Sounding per Quarter per Reach.
*** High frequency (200 kHz) survey data represents the first signal return at a sounding location and will include suspended solids, known as "fluff", if present. Low frequency (20 kHz) survey data normally penetrates through this "fluff" layer to depict elevations of consolidated bottom material. Low frequency accuracies may vary depending on channel conditions and fathometer settings.