

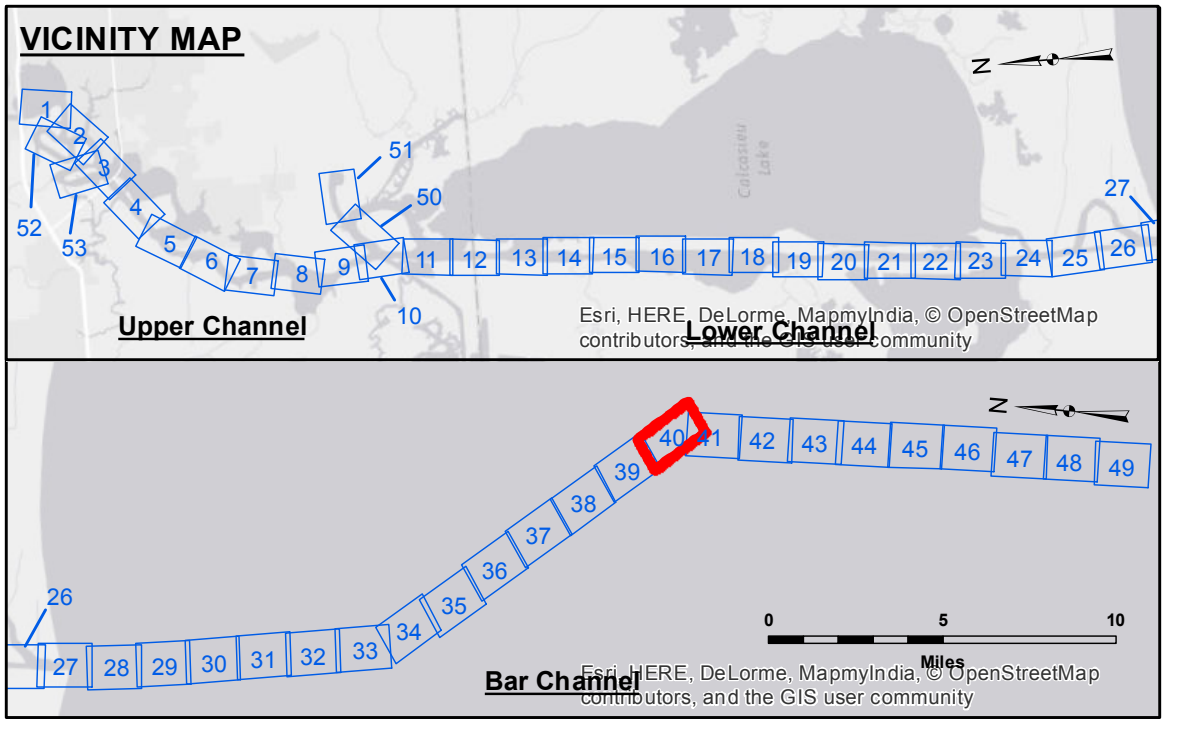
DISCLAIMER
 The information depicted on this map represents the results of a hydrographic survey conducted by the U.S. Army Corps of Engineers. The user is responsible for the accuracy, completeness, reliability, usability, or suitability of the information for any purpose other than that for which it was intended. The user is responsible for the accuracy, completeness, reliability, usability, or suitability of the information for any purpose other than that for which it was intended. The user is responsible for the accuracy, completeness, reliability, usability, or suitability of the information for any purpose other than that for which it was intended.

Submitted:	Surveyed By:	JH/SPS
Recommended:	Plotted By:	BITD
Approved:	Chief, Survey Section	
	Chief, Waterways Maintenance Section	TAF

U.S. ARMY CORPS OF ENGINEERS
 NEW ORLEANS DISTRICT

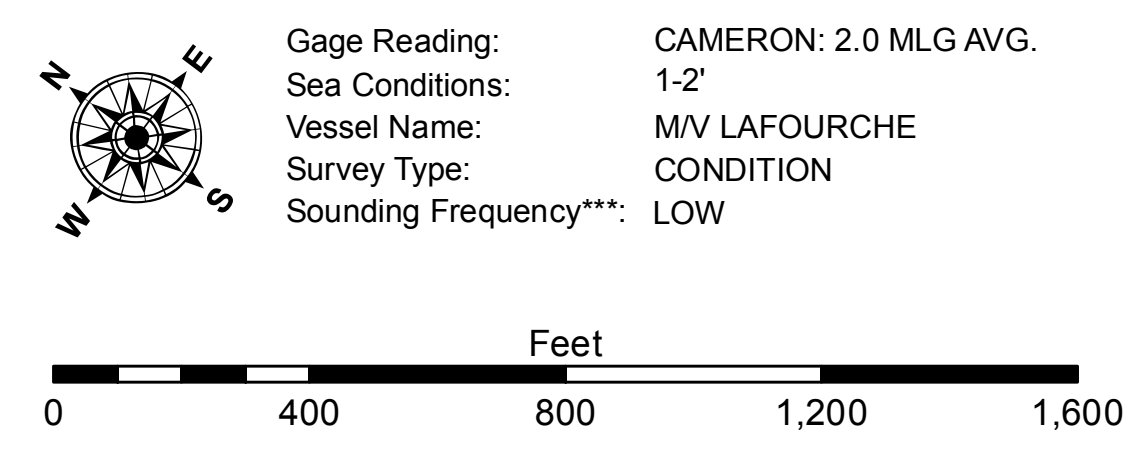
CALCASIEU SHIP CHANNEL
BAR SHEET 40
CR_40_BAR_20150128
28 January 2015

Sheet Reference Number
40 of 53



LEGEND

--- Federal Navigation Channel	○ Cable Area	□ Borrow Area	■ -15' and above
— Federal Navigation Center Line	□ Placement Area	● Shoalest Sounding**	■ -15' to -20'
— As-built Pipeline/Cable	□ Anchorage Area	★ Beacon, General	■ -20' to -25'
..... Unconfirmed Pipeline/Cable	⊗ Obstruction Point	◆ Red Navigation Buoy	■ -25' to -32'
— Project Depth Contour	⚓ Wrecks-Submerged	◆ Green Navigation Buoy	■ -32' to -38'
			■ -38' to -40'
			■ -40' to -42'
			■ -42' and below



NOTES:
 Horizontal Coordinate System: North American Datum of 1983 (NAD83), projected to the State Plane Coordinate System (SPCS), Louisiana South Zone. Distance units in U.S. Survey Feet.
 Vertical Datum: CAMERON: 2.0 MLG AVG.
 Soundings are shown in feet and indicate depths below Mean Low Gulf Datum (MLG). Datum Relationships for gage 73650 as of December 2013: 0.0' NAVD83 (2009.55) = 1.3' MLLW = 2.3' MLG or 0.0' MLLW = 1.0' MLG
 Distances on the Calcasieu River are shown at 1 mile intervals.
 The location of navigation aids are base on and provided by the U.S. Coast Guard and USACE survey crews.
 2010 Aerial Photography data source: NAIP
 Reference is N.O.A.A. Navigation Chart No. 11339.
 *** Shoalest Sounding per Quarter per Reach.
 *** High frequency (200 kHz) survey data represents the first signal return at a sounding location and will include suspended solids, known as "fluff", if present. Low frequency (20 kHz) survey data normally penetrates through this "fluff" layer to depict elevations of consolidated bottom material. Low frequency accuracies may vary depending on channel conditions and fathometer settings.