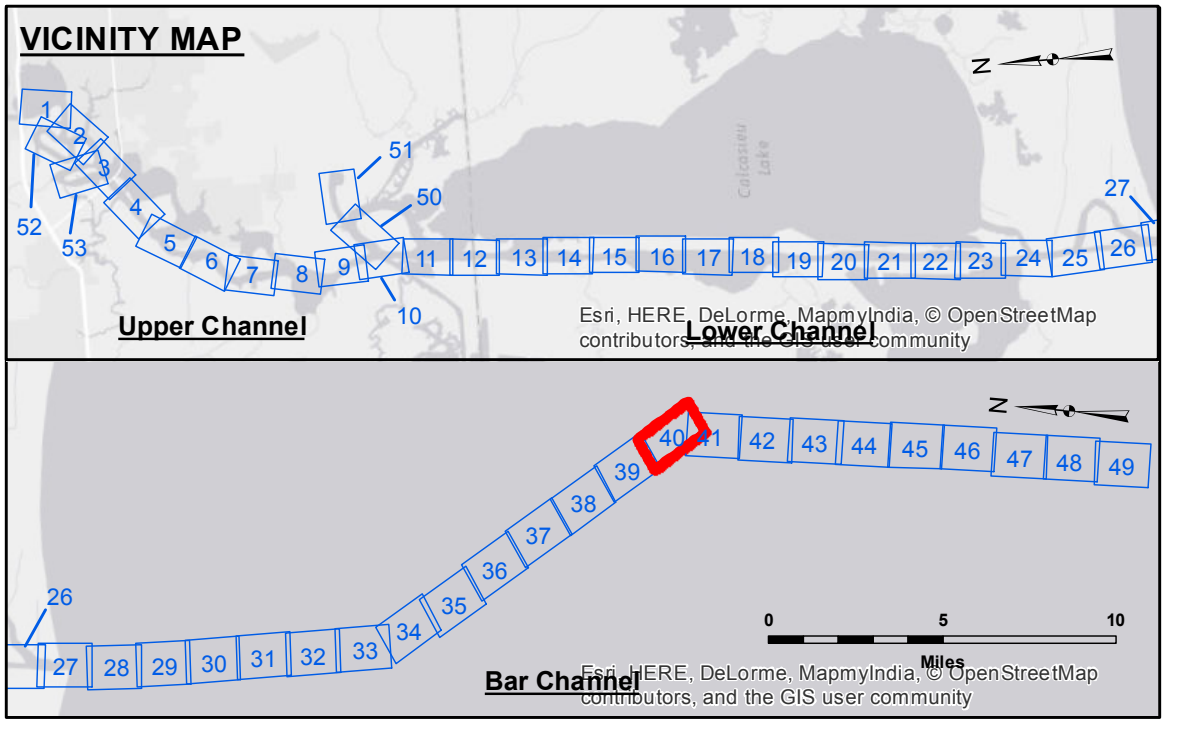
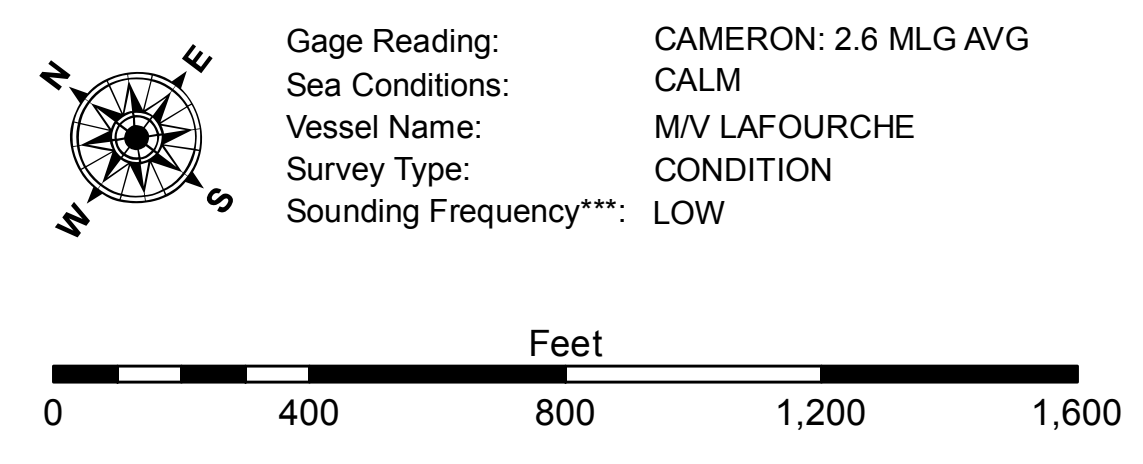


LC CURVE DATA
 $\Delta = 1^\circ 00'$
 $D = 37^\circ 20'$
 $T = 1935.64'$
 $L = 3733.33'$
 $R = 5729.58'$



LEGEND

--- Federal Navigation Channel	○ Cable Area	□ Borrow Area	■ -15' and above
— Federal Navigation Center Line	□ Placement Area	● Shoalest Sounding**	■ -15' to -20'
— As-built Pipeline/Cable	□ Anchorage Area	★ Beacon, General	■ -20' to -25'
..... Unconfirmed Pipeline/Cable	⊗ Obstruction Point	◆ Red Navigation Buoy	■ -25' to -32'
— Project Depth Contour	⚓ Wrecks-Submerged	◆ Green Navigation Buoy	■ -32' to -38'
			■ -38' to -40'
			■ -40' to -42'
			■ -42' and below



NOTES:
 Horizontal Coordinate System: North American Datum of 1983 (NAD83), projected to the State Plane Coordinate System (SPCS), Louisiana South Zone. Distance units in U.S. Survey Feet.
 Vertical Datum: Soundings are shown in feet and indicate depths below Mean Low Gulf Datum (MLG). Datum Relationships for gage 73650 as of December 2013: 0.0' NAVD83 (2009.55) = 1.3' MLLW = 2.3' MLG or 0.0' MLLW = 1.0' MLG
 Distances on the Calcasieu River are shown at 1 mile intervals.
 The location of navigation aids are based on and provided by the U.S. Coast Guard and USACE survey crews.
 2010 Aerial Photography data source: NAIP
 Reference is N.O.A.A. Navigation Chart No. 11339.
 ** Shoalest Sounding per Quarter per Reach.
 *** High frequency (200 kHz) survey data represents the first signal return at a sounding location and will include suspended solids, known as "fluff", if present. Low frequency (20 kHz) survey data normally penetrates through this "fluff" layer to depict elevations of consolidated bottom material. Low frequency accuracies may vary depending on channel conditions and fathometer settings.



DISCLAIMER
 The United States Government furnishes these data and the recipient accepts and uses them with the express understanding that the data are not to be used for any purpose other than that for which they were prepared, and that the user is responsible for the accuracy, completeness, reliability, usability or suitability for any particular purpose of the data. These data are provided as a service to the user and are not to be used for any purpose other than that for which they were prepared. The recipient may not transfer these data to others without the written consent of the U.S. Army Corps of Engineers. The information depicted on this map represents the results of a survey conducted on or about the date indicated. The recipient is to be responsible for the general condition existing at that time.

U.S. ARMY CORPS OF ENGINEERS
 NEW ORLEANS DISTRICT

Submitted:	Surveyed By: JA, JH
Recommender: Chief, Survey Section	Plotted By: AO
Approved:	Checked By: TF

CALCASIEU SHIP CHANNEL
BAR SHEET 40
CR_40_BAR_20150623_POSTSTORM
23 June 2015

Sheet Reference Number
40 of 53