

L C CURVE DATA
 $\Delta = 1^{\circ} 00'$
 $D = 37^{\circ} 20'$
 $T = 1935.64'$
 $L = 3733.33'$
 $R = 5729.58'$



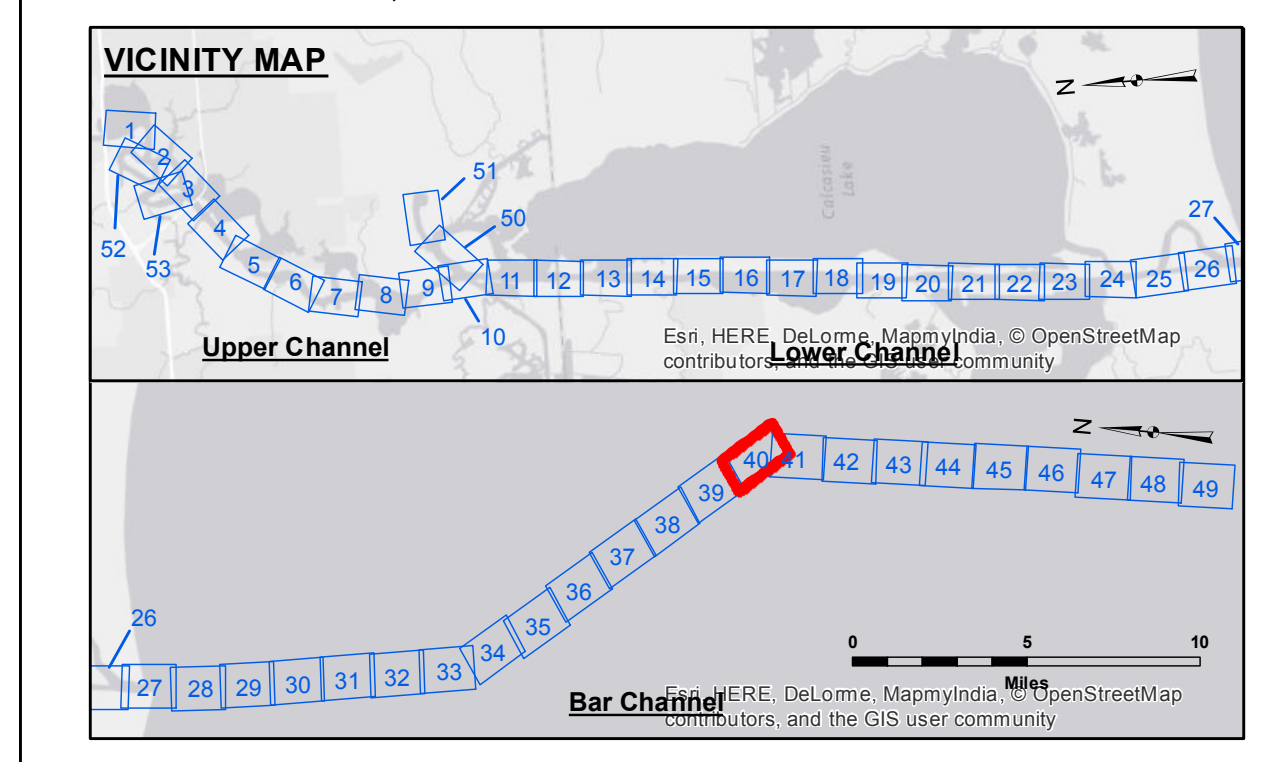
DISCLAIMER
 The United States Government furnishes these data and the recipient accepts and uses them with the express understanding that the Government makes no warranty, either expressed or implied, concerning the accuracy, completeness, reliability, usability, or suitability for any particular purpose of the information. The user is responsible for the results obtained from the use of this information. Application of the data or other data included herein for purposes not intended by the Corps of Engineers is the user's responsibility. Hydrographic survey data is subject to change rapidly due to several factors including but not limited to dredging, accretion, and changes in bathymetry. The Corps of Engineers does not accept responsibility for changes in the hydrographic conditions when developed after the date of the original survey. Product maintainers should not rely solely upon this information.

Submitted:	SR, JH
Recommended:	AO
Approved:	AO

U.S. ARMY CORPS OF ENGINEERS
 NEW ORLEANS DISTRICT
 Chief, Waterways Maintenance Section

CALCASIEU SHIP CHANNEL
 BAR SHEET 40
 CR_40_BAR_20170705_CS
 05 July 2017

Sheet Reference Number
40 of 53



LEGEND		
--- Federal Navigation Channel	••• Cable Area	3 Fluff Thickness (feet)*
— Federal Navigation Center Line	▭ Placement Area	• Shoalest Sounding**
— As-built Pipeline/Cable	▭ Anchorage Area	★ Beacon, General
..... Unconfirmed Pipeline/Cable	⊗ Obstruction Point	◆ Red Navigation Buoy
— Project Depth Contour	⚓ Wrecks-Submerged	◆ Green Navigation Buoy
		■ -15' and above
		■ -15' to -20'
		■ -20' to -25'
		■ -25' to -32'
		■ -32' to -38'
		■ -38' to -40'
		■ -40' to -42'
		■ -42' and below

GAGE READING: CAMERON: 3.0 MLG AVG
SEA CONDITIONS: 1-2 SEAS
VESSEL NAME: TECHE
SURVEY TYPE: CONDITION
SOUNDING FREQUENCY: LOW

NOTES:
 Horizontal Coordinate System:
 North American Datum of 1983 (NAD83), projected to the State Plane Coordinate System (SPCS), Louisiana South Zone. Distance units in U.S. Survey Feet.
 Vertical Datum:
 Soundings are shown in feet and indicate depths below Mean Low Gulf Datum (MLG).
 Datum Relationships for gage 73650 as of December 2013:
 0.0' NAVD83 (2009.55) = 1.3' MLLW = 2.3' MLG or 0.0' MLLW = 1.0' MLG
 Distances on the Calcasieu River are shown at 1 mile intervals.
 The location of navigation aids are based on and provided by the U.S. Coast Guard and USACE survey crews.
 2015 Aerial Photography data source: NAIP
 Reference is N.O.A. Navigation Chart No. 11339.
 * Difference between high and low frequency elevations where greater than 1.0'.
 ** Shoalest Sounding per Quarter per Reach.
 *** High frequency (200 kHz) survey data represents the first signal return at a sounding location and will include suspended solids, known as "fluff", if present. Low frequency (20 kHz) survey data normally penetrates through this "fluff" layer to depict elevations of consolidated bottom material. Low frequency accuracies may vary depending on channel conditions and fathometer settings.