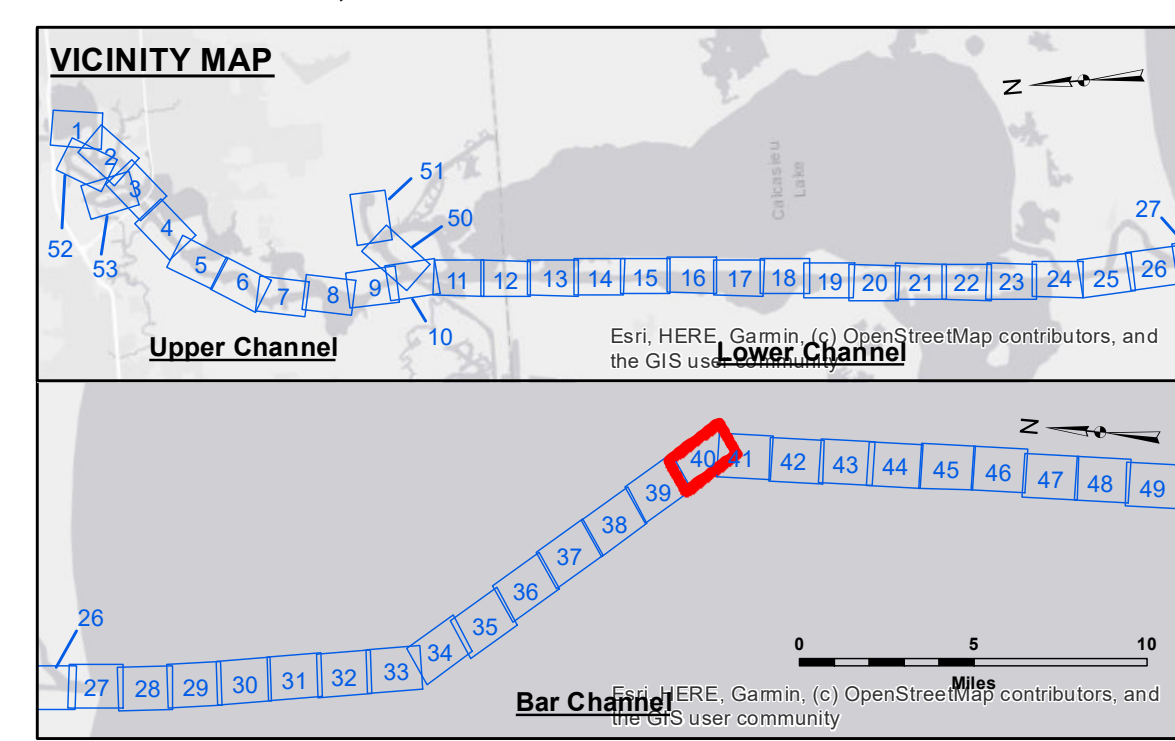


LC CURVE DATA
 $\Delta = 1^\circ 00'$
 $D = 37^\circ 20'$
 $T = 1935.64'$
 $L = 3733.33'$
 $R = 5729.58'$

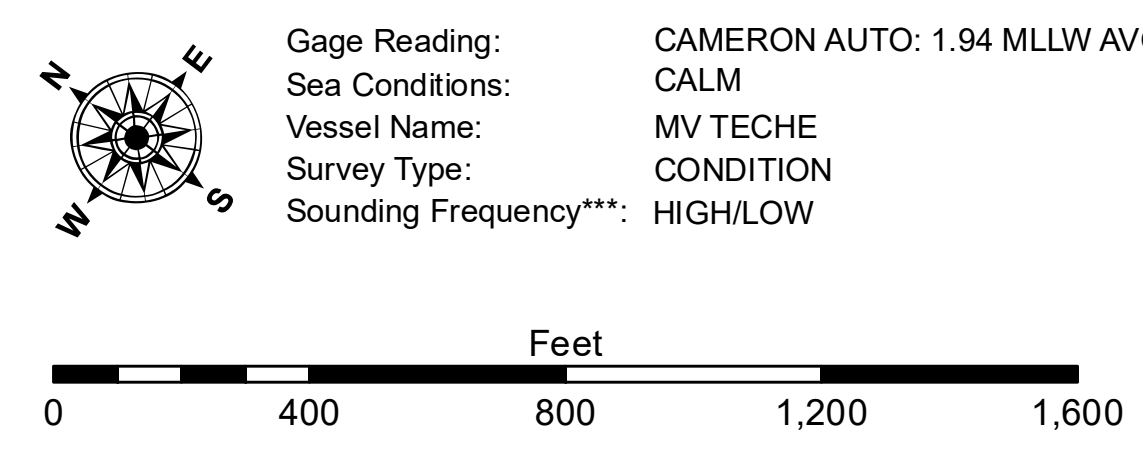
TARGARESOURCE PIPELINE
 STA. 901+81
 12.75" GAS
 EL. -50.0 MLLG

**SITE NO. 2
 DISPOSAL AREA**



LEGEND

--- Federal Navigation Channel	○ Cable Area	3 Fluff Thickness (feet)*	-16' and above
— Federal Navigation Center Line	□ Placement Area	● Shoalest Sounding**	-16' to -21'
— As-built Pipeline/Cable	⊗ Anchorage Area	★ Beacon, General	-21' to -26'
..... Unconfirmed Pipeline/Cable	⊗ Obstruction Point	◆ Red Navigation Buoy	-26' to -33'
— Project Depth Contour	⊗ Wrecks-Submerged	◆ Green Navigation Buoy	-33' to -39'
			-39' to -41'
			-41' to -43'
			-43' and below



NOTES:
 Horizontal Coordinate System:
 North American Datum of 1983 (NAD83), projected to the State Plane
 Coordinate System (SPCS), Louisiana South Zone. Distance units in U.S. Survey Feet.
 Vertical Datum:
 Soundings are shown in feet and indicate depths below Mean Lower Low Water Datum (MLLW).
 Datum Relationships for gage 73650 as of December 2013:
 0.0' NAVD83 (2009.55) = 1.3' MLLW = 2.3' MLG or 0.0' MLLW = 1.0' MLG
 Distances on the Calcasieu River are shown at 1 mile intervals.
 The location of navigation aids are base on and provided by the U.S. Coast Guard
 and USACE survey crews.
 2015 Aerial Photography data source: NAIP
 Reference is N.O.A.A. Navigation Chart No. 11339.
 * Difference between high and low frequency elevations where greater than 1.0'.
 ** Shoalest Sounding per Quarter per Reach.
 *** High frequency (200 kHz) survey data represents the first signal return at a sounding
 location and will include suspended solids, known as "fluff", if present. Low frequency (20 kHz)
 survey data normally penetrates through this "fluff" layer to depict elevations of consolidated bottom
 material. Low frequency accuracies may vary depending on channel conditions and fathometer
 settings.



DISCLAIMER: The United States Government furnishes these data and the recipient accepts and uses them with the express understanding that the data are not warranted for any purpose other than that for which they were prepared, or implied concerning the accuracy, completeness, reliability, usability or suitability for any particular purpose of the recipient. The user is responsible for the results of any application of the data for other than the intended purpose. Data Constraints: Hydrographic survey data is subject to change rapidly due to several factors including, but not limited to, changing hydrographic conditions which develop after the date of the survey. The user is responsible for the results of any application of the data for other than the intended purpose. The information depicted on this map represents the results of a survey conducted at the time of the survey. It is not intended to represent the general condition existing at that time.

Submitted:	Surveyed By: SP-JS
Recommended:	Plotted By: JH
Chief, Survey Section	Checked By: JH
Chief, Waterways Maintenance Section	

**CALCASIEU SHIP CHANNEL
 BAR SHEET 40
 CR_40_BAR_20230912_CS
 12 September 2023**

**Sheet Reference Number
 40 of 53**