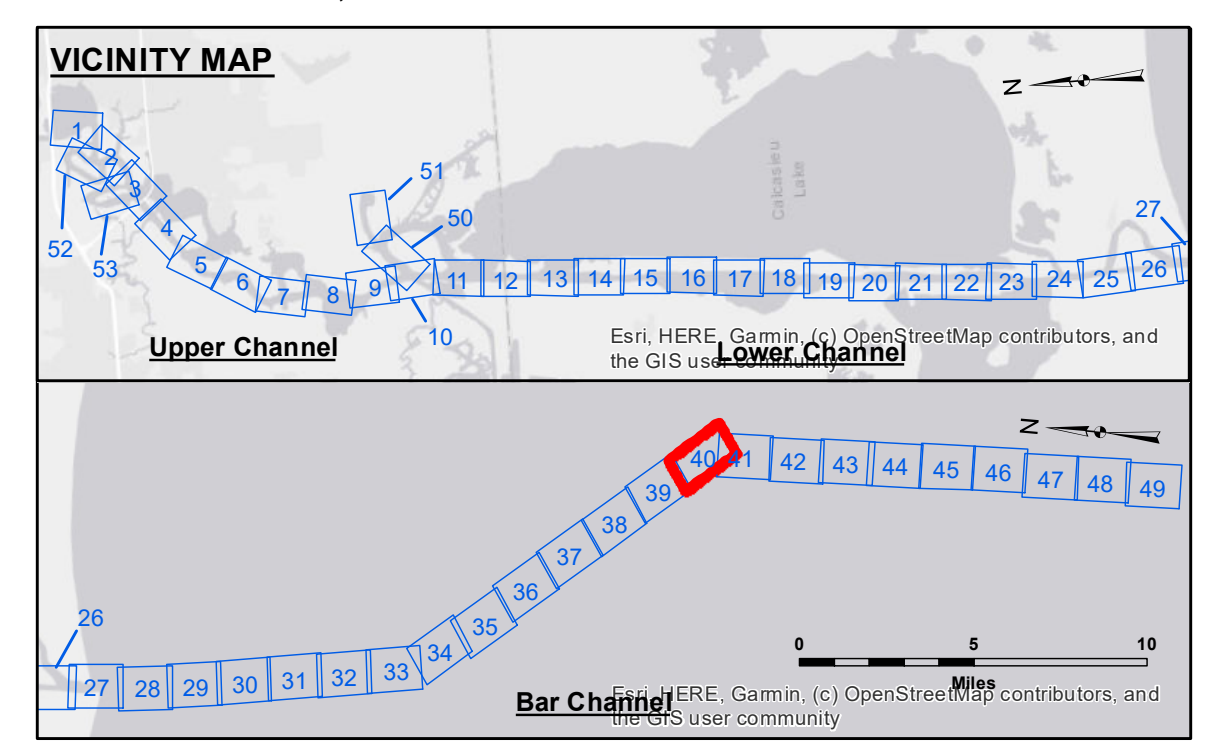


LC CURVE DATA
 $\Delta = 1^\circ 00'$
 $D = 37^\circ 20'$
 $T = 1935.64'$
 $L = 3733.33'$
 $R = 5729.58'$

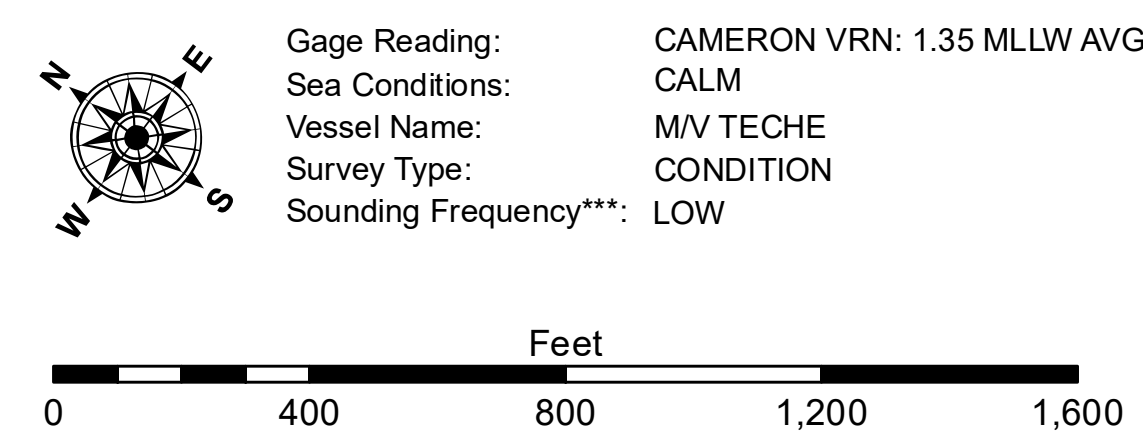
TARGARESOURCE PIPELINE
 STA. 901+81
 12.75" GAS
 EL. -59.0 MLLG

**SITE NO. 2
 DISPOSAL AREA**

GULF OF MEXICO
CRON



LEGEND			
--- Federal Navigation Channel	○ Cable Area	3 Fluff Thickness (feet)*	-16' and above
— Federal Navigation Center Line	□ Placement Area	● Shoalest Sounding**	-16' to -21'
— As-built Pipeline/Cable	⊗ Anchorage Area	★ Beacon, General	-21' to -26'
..... Unconfirmed Pipeline/Cable	⊗ Obstruction Point	◆ Red Navigation Buoy	-26' to -33'
— Project Depth Contour	⊗ Wrecks-Submerged	◆ Green Navigation Buoy	-33' to -39'
			-39' to -41'
			-41' to -43'
			-43' and below



NOTES:
 Horizontal Coordinate System:
 North American Datum of 1983 (NAD83), projected to the State Plane Coordinate System (SPCS), Louisiana South Zone. Distance units in U.S. Survey Feet.
 Vertical Datum:
 Soundings are shown in feet and indicate depths below Mean Lower Low Water Datum (MLLW).
 Datum Relationships for gage 73650 as of December 2013:
 0.0' NAVD88 (2009.55) = 1.3' MLLW = 2.3' MLG or 0.0' MLLW = 1.0' MLG
 Distances on the Calcasieu River are shown at 1 mile intervals.
 The location of navigation aids are base on and provided by the U.S. Coast Guard and USACE survey crews.
 2015 Aerial Photography data source: NAIP
 Reference is N.O.A.A. Navigation Chart No. 11339.
 * Difference between high and low frequency elevations where greater than 1.0'.
 ** Shoalest Sounding per Quarter per Reach.
 *** High frequency (200 kHz) survey data represents the first signal return at a sounding location and will include suspended solids, known as "fluff", if present. Low frequency (20 kHz) survey data normally penetrates through this "fluff" layer to depict elevations of consolidated bottom material. Low frequency accuracies may vary depending on channel conditions and fathometer settings.



DISCLAIMER
 The United States Government furnishes these data and the recipient accepts and uses them with the express understanding that the data are not to be used for any purpose other than that for which they were prepared, or in any way that may constitute a warranty, express or implied, of accuracy, completeness, reliability, usability or suitability for any particular purpose of the recipient. The user is responsible for the results of any application of the data for other than the intended purpose.
 Data Constraints: Hydrographic survey data is subject to change rapidly due to several factors including, but not limited to, changing hydrographic conditions which develop after the date of the survey. The user is responsible for the results of any application of the data for other than the intended purpose. The user is responsible for the results of any application of the data for other than the intended purpose.
 The information depicted on this map represents the results of a survey conducted on or about the date indicated. It is not to be used for any purpose other than that for which it was prepared. The user is responsible for the results of any application of the data for other than the intended purpose.

Submitted:	Surveyed By: SPJS
Recommended:	Plotted By: BD
Chief, Survey Section	Checked By: ADJH
Chief, Waterways Maintenance Section	

CALCASIEU SHIP CHANNEL
BAR SHEET 40
CR_40_BAR_20250205_CS
05 February 2025

Sheet Reference Number
40 of 53