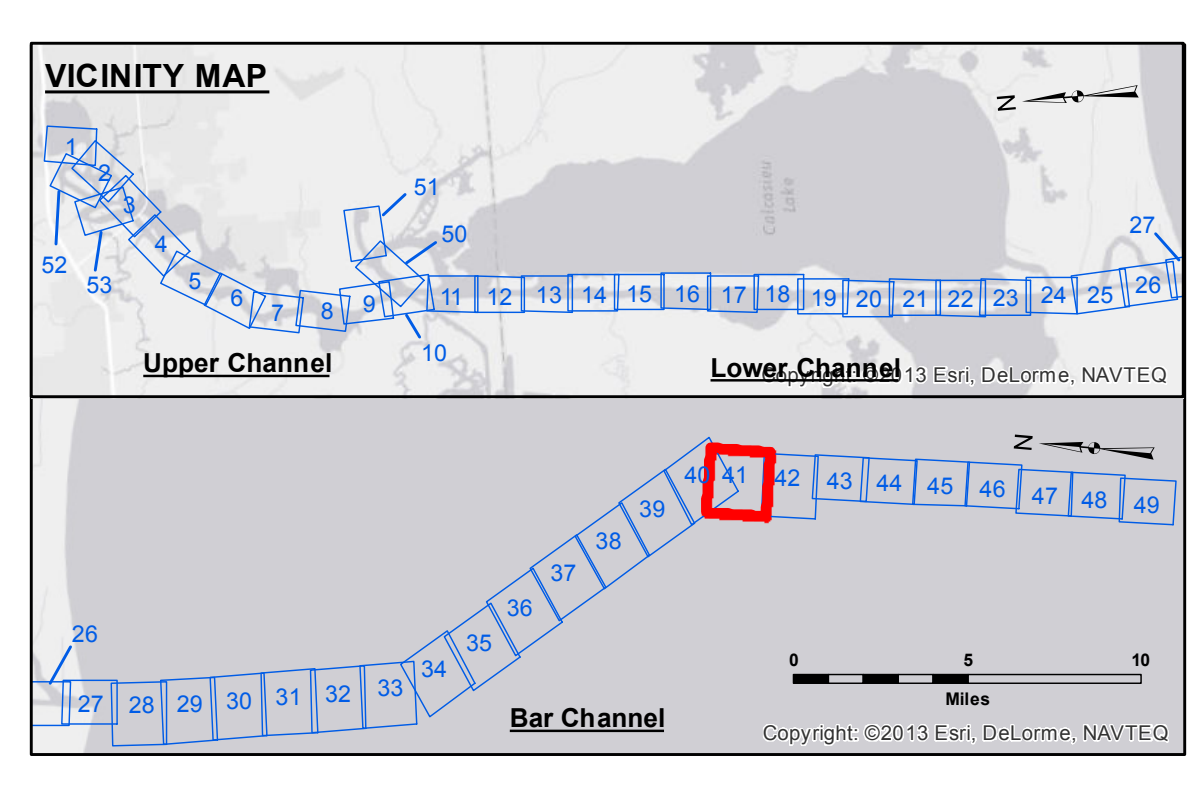
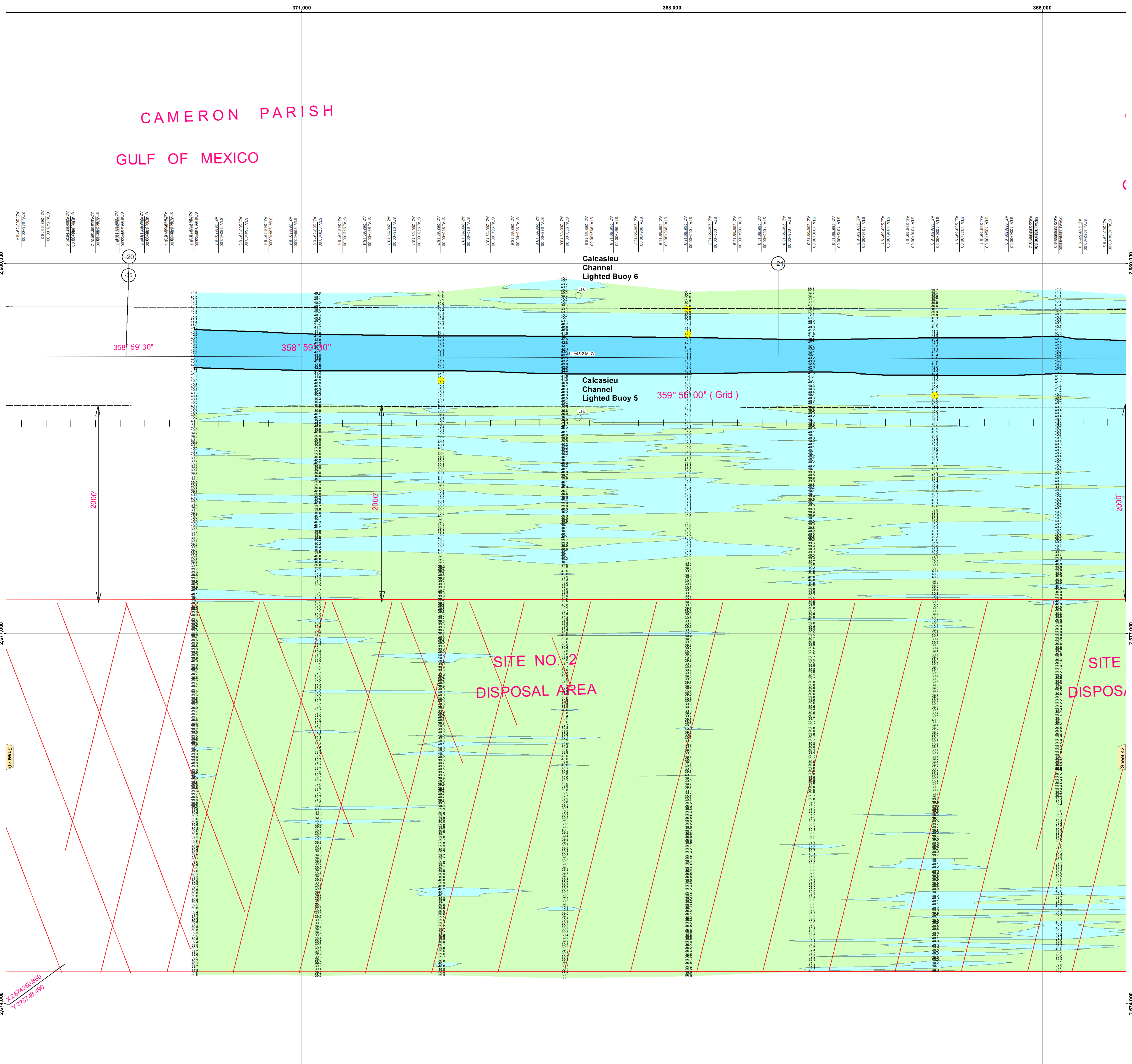
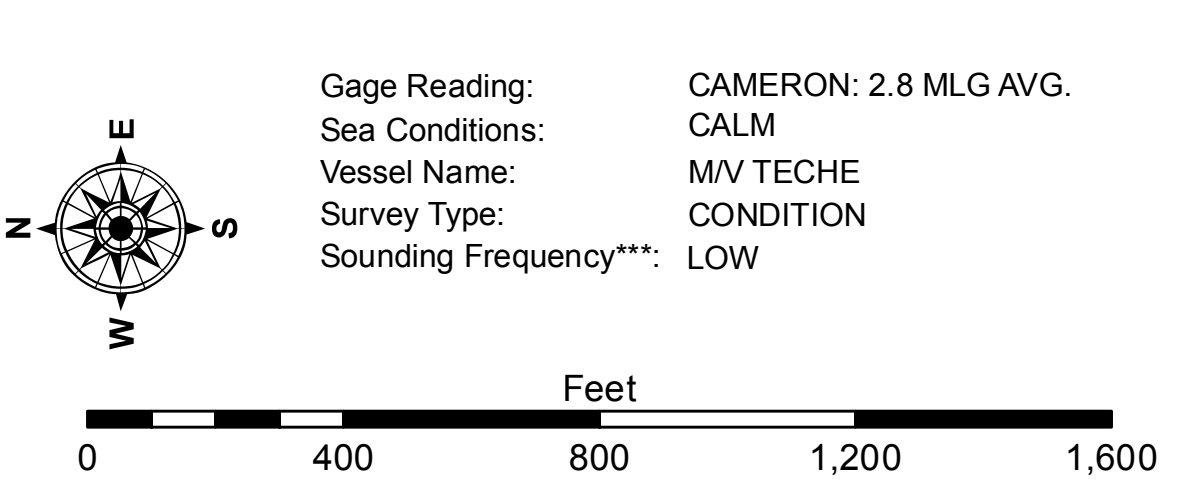


CAMERON PARISH
GULF OF MEXICO



LEGEND

--- Federal Navigation Channel	○ Cable Area	□ Borrow Area	● Shoalest Sounding**	■ -15' and above
— Federal Navigation Center Line	□ Placement Area	● Beacon, General	★ Red Navigation Buoy	■ -15' to -20'
— As-built Pipeline/Cable	□ Anchorage Area	★ Beacon, General	★ Red Navigation Buoy	■ -20' to -25'
..... Unconfirmed Pipeline/Cable	⊗ Obstruction Point	★ Beacon, General	★ Red Navigation Buoy	■ -25' to -32'
— Project Depth Contour	⚓ Wrecks-Submerged	★ Beacon, General	★ Red Navigation Buoy	■ -32' to -38'
		★ Beacon, General	★ Red Navigation Buoy	■ -38' to -40'
		★ Beacon, General	★ Red Navigation Buoy	■ -40' to -42'
		★ Beacon, General	★ Red Navigation Buoy	■ -42' and below



NOTES:
 Horizontal Coordinate System:
 North American Datum of 1983 (NAD83), projected to the State Plane
 Coordinate System (SPCS), Louisiana South Zone. Distance units in U.S. Survey Feet.
 Vertical Datum:
 Soundings are shown in feet and indicate depths below Mean Low Gulf Datum (MLG).
 Datum Relationships for gage 73650 as of December 2013:
 0.0' NAVD88 (2009.55) = 1.3' MLLW = 2.3' MLG or 0.0' MLLW = 1.0' MLG
 Distances on the Calcasieu River are shown at 1 mile intervals.
 The location of navigation aids are based on and provided by the U.S. Coast Guard
 and USACE survey crews.
 2010 Aerial Photography data source: NAIP
 Reference is N.O.A.A. Navigation Chart No. 11339.
 ** Shoalest Sounding per Quarter per Reach.

US Army Corps of Engineers
 District: CEMVNV

Disclaimer: The United States Government furnishes this data as a service to the public and does not warrant, represent, or guarantee the accuracy, reliability, or completeness of the information. The user is responsible for the accuracy and reliability of the information for the purpose intended. The user is responsible for the accuracy and reliability of the information for the purpose intended. The user is responsible for the accuracy and reliability of the information for the purpose intended.

U.S. ARMY CORPS OF ENGINEERS
 NEW ORLEANS DISTRICT

Submitted:	Surveys By:
Recommended:	PS, JH
Approved:	Revised By:
	BTD
	Checked By:
	RAF

CALCASIEU SHIP CHANNEL
BAR SHEET 41
CR_41_BARX_20140909
09 September 2014

Sheet Reference Number
41 of 53

Revision Number:
 3.6.1-20140909