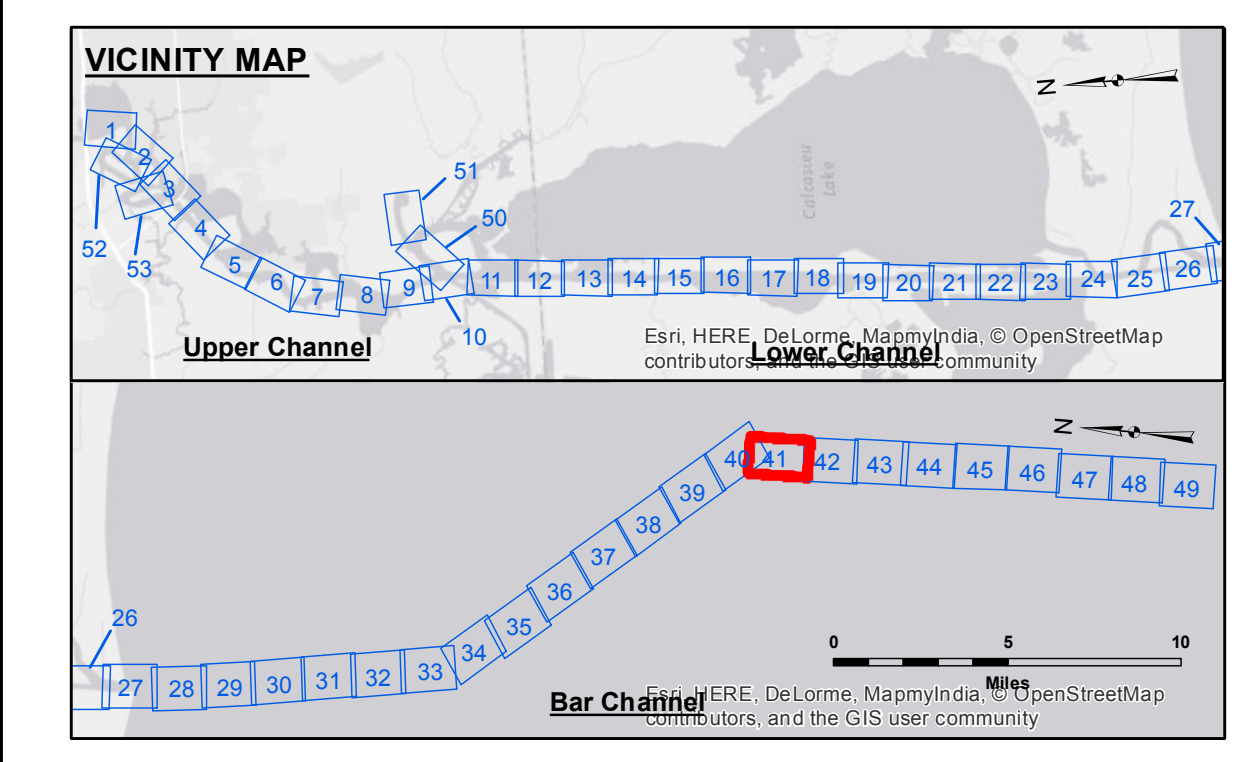
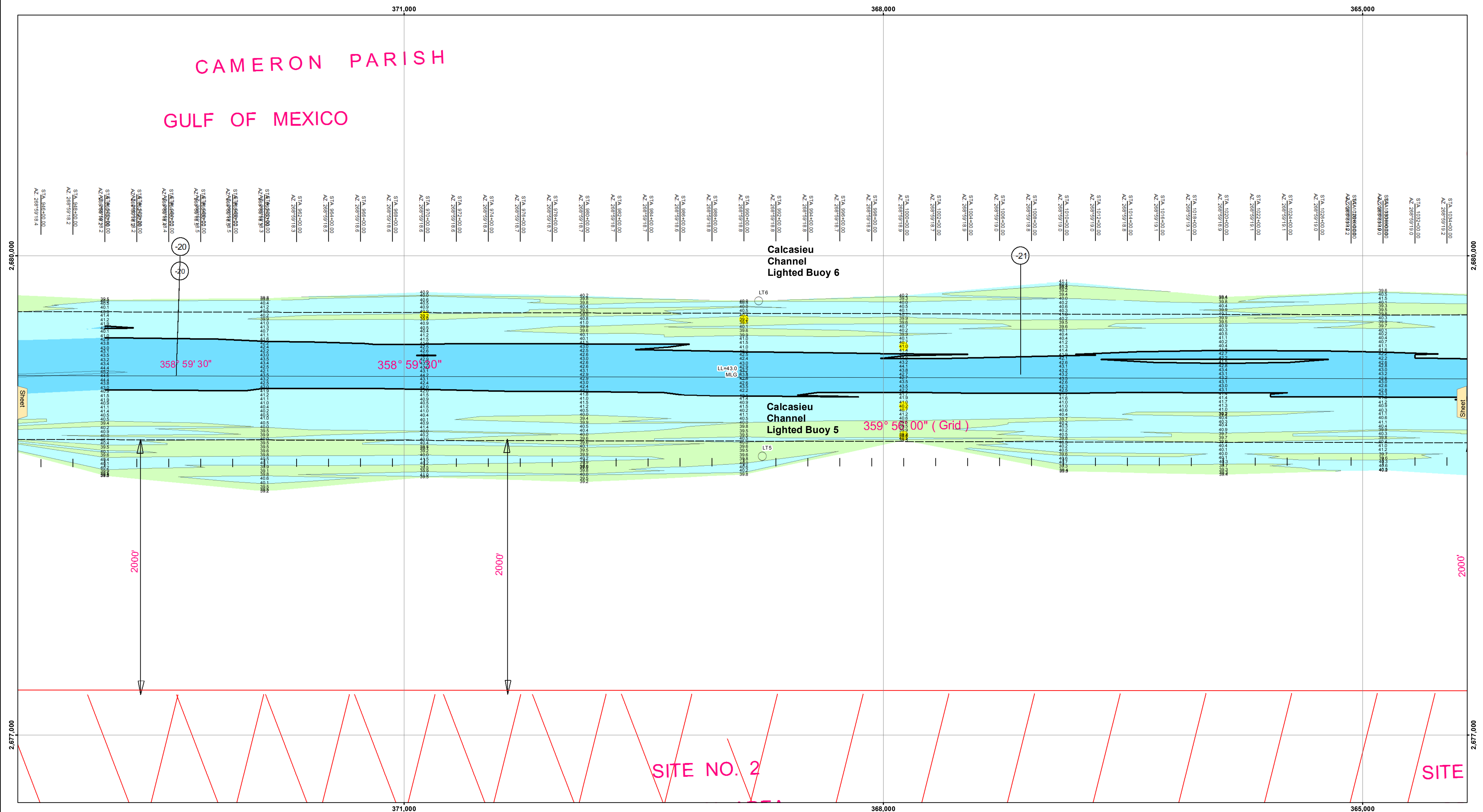
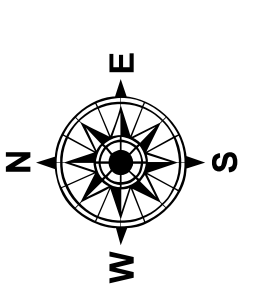


CAMERON PARISH  
GULF OF MEXICO



**LEGEND**

--- Federal Navigation Channel	○ Cable Area	□ Borrow Area	■ -15' and above
— Federal Navigation Center Line	□ Placement Area	● Shoalest Sounding**	■ -15' to -20'
— As-built Pipeline/Cable	□ Anchorage Area	★ Beacon, General	■ -20' to -25'
..... Unconfirmed Pipeline/Cable	⊗ Obstruction Point	◆ Red Navigation Buoy	■ -25' to -32'
— Project Depth Contour	⚓ Wrecks-Submerged	◆ Green Navigation Buoy	■ -32' to -38'
			■ -38' to -40'
			■ -40' to -42'
			■ -42' and below



Gage Reading: CAMERON: 2.0 MLG  
 Sea Conditions: CALM  
 Vessel Name: M/V TECHE  
 Survey Type: CONDITION  
 Sounding Frequency\*\*\*: LOW

Distances on the Calcasieu River are shown at 1 mile intervals.

The location of navigation aids are base on and provided by the U.S. Coast Guard and USACE survey crews.

2010 Aerial Photography data source: NAIP  
 Reference is N.O.A.A. Navigation Chart No. 11339.

\*\*\* Shoalest Sounding per Quarter per Reach.

\*\*\* High frequency (200 kHz) survey data represents the first signal return at a sounding location and will include suspended solids, known as "fluff", if present. Low frequency (20 kHz) survey data normally penetrates through this "fluff" layer to depict elevations of consolidated bottom material. Low frequency accuracies may vary depending on channel conditions and fathometer settings.

**NOTES:**

Horizontal Coordinate System: North American Datum of 1983 (NAD83), projected to the State Plane Coordinate System (SPCS), Louisiana South Zone. Distance units in U.S. Survey Feet.

Vertical Datum: Soundings are shown in feet and indicate depths below Mean Low Gulf Datum (MLG). Datum Relationships for gage 73650 as of December 2013: 0.0' NAVD83 (2009.55) = 1.3' MLLW = 2.3' MLG or 0.0' MLLW = 1.0' MLG



**DISCLAIMER**

The United States Government furnishes these data and the recipient accepts and uses them with the express understanding that the data are not to be used for any purpose other than that for which they were prepared, and that the data are not to be used for any purpose other than that for which they were prepared, and that the data are not to be used for any purpose other than that for which they were prepared.

U.S. ARMY CORPS OF ENGINEERS  
NEW ORLEANS DISTRICT

Submitted:	Surveyed By: SJR,jdh
Recommended:	Plotted By: BID
Approved:	Chief, Survey Section
	Chief, Waterways Maintenance Section

**CALCASIEU SHIP CHANNEL**  
**BAR SHEET 41**  
**CR\_41\_BAR\_20150401**  
**01 April 2015**

**Sheet Reference Number of**