



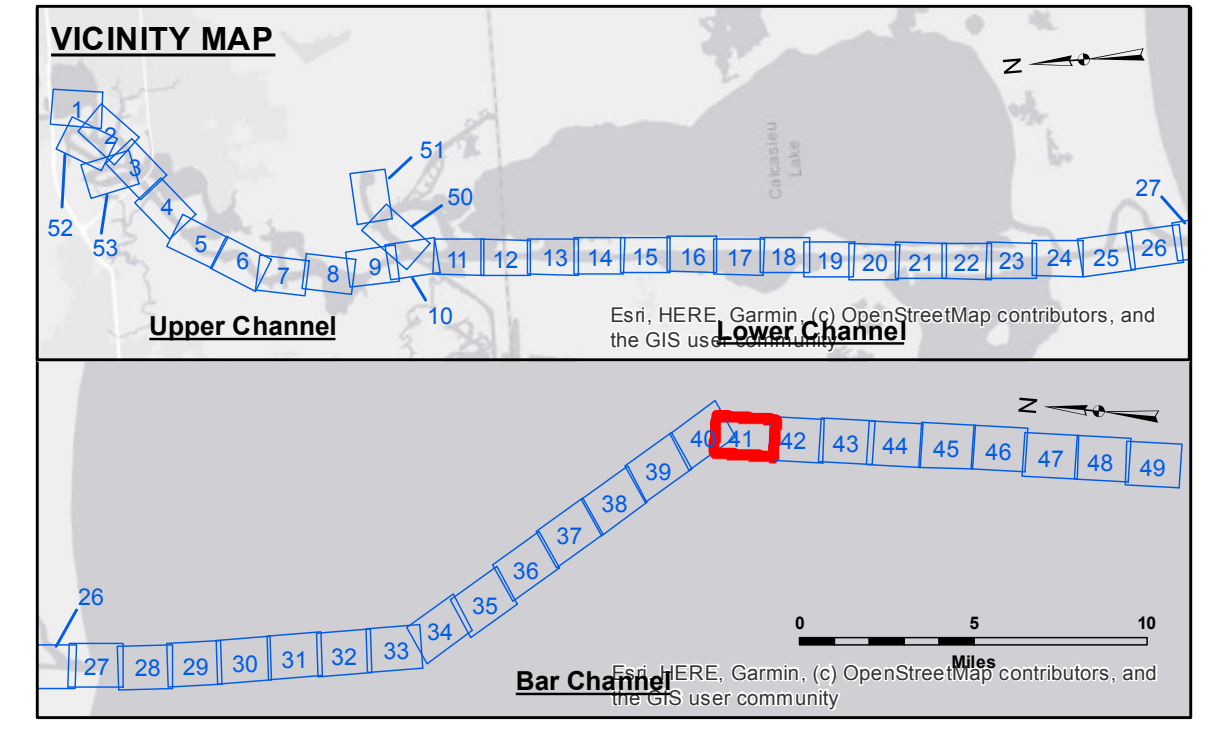
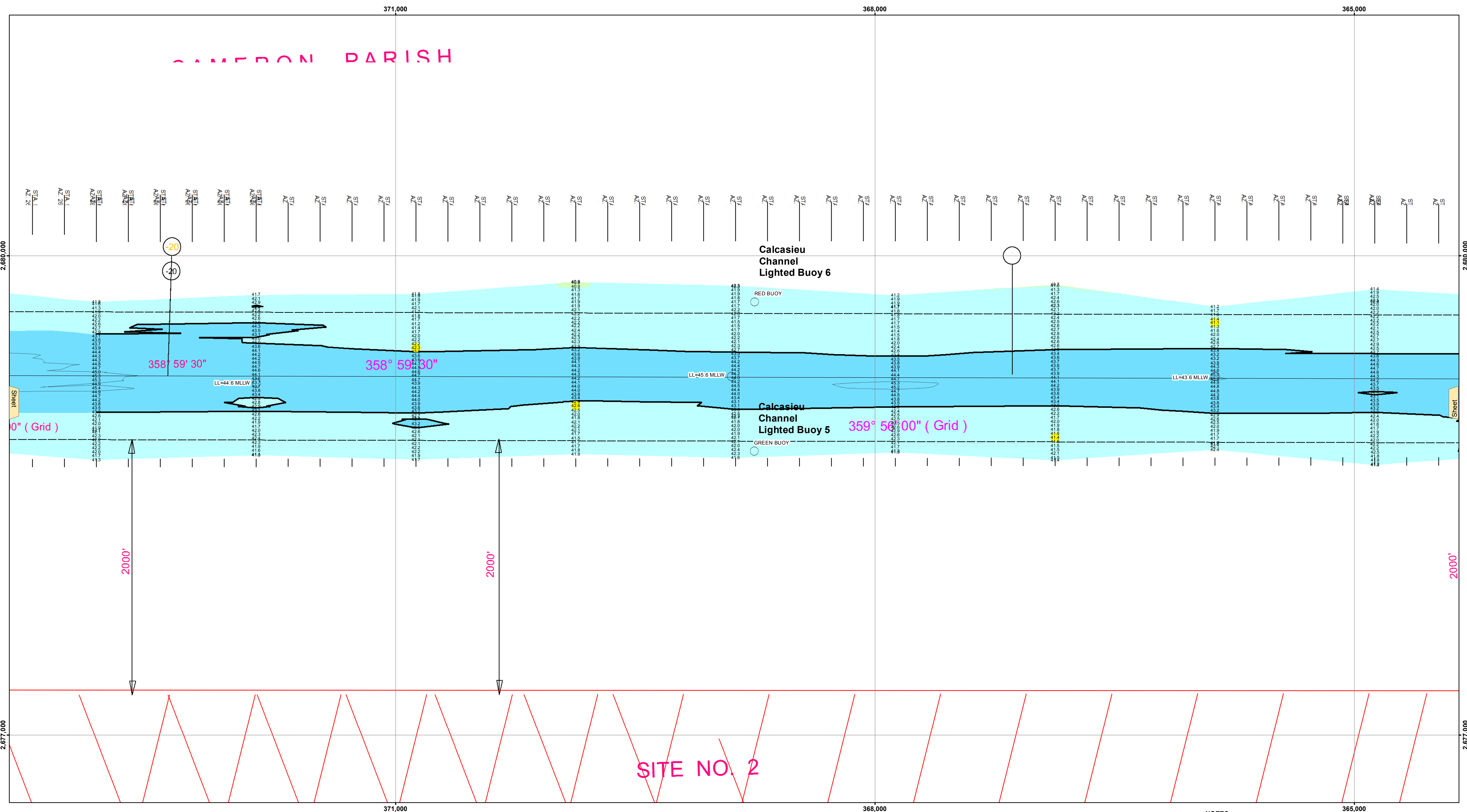
DISCLAIMER
 Distribution Liability: The data represents the results of data collection for a specific US Army Corps of Engineers project and is only valid for its intended use, control, time and accuracy specifications. The user is responsible for the results of any application of the data for other than its intended purpose.
 Data Constraints: Hydrographic survey data is subject to change rapidly due to several factors including but not limited to dredging operations, channel migration, and other factors. The US Army Corps of Engineers accepts no responsibility for changes in the hydrographic conditions when developed after the date of the survey. Product maintainers should not rely solely upon it.
 Access Constraints: The United States Government furnishes this information and the recipient accepts and uses them with the express understanding that it is not to be distributed, reproduced, or applied for any purpose other than that for which it was prepared, or for any purpose for which it was not intended, without the express written consent of the United States Government. These data are being made available to the public under a Creative Commons Attribution-NonCommercial-ShareAlike license. The recipient may not transfer these data to others without also transferring this Disclaimer.
 The information depicted on this map represents the results of a survey conducted on or about the date indicated. It is not to be considered to represent the general condition existing at that time.

Submitted:	Surveyed By:	RYLAND/DAMS
Recommended:	Plotted By:	BD
Approved:	Chief, Survey Section	AC
	Chief, Waterways Maintenance Section	

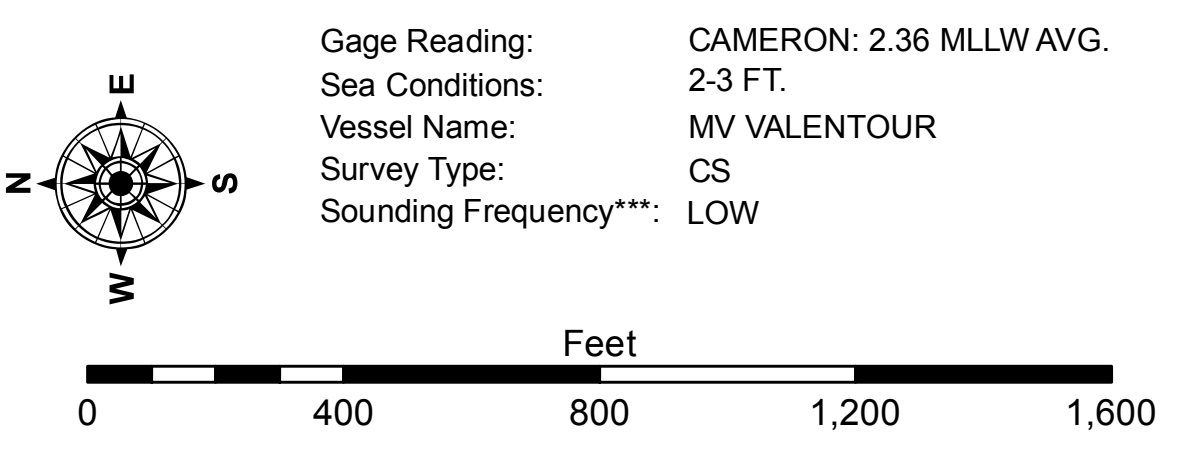
CALCASIEU SHIP CHANNEL
BAR SHEET 41
CR_41_BAR_20200731_CS
31 July 2020

Sheet Reference Number of

Revision Number:
 4.1-20191105



LEGEND			
--- Federal Navigation Channel	○ Cable Area	3 Fluff Thickness (feet)*	-16' and above
— Federal Navigation Center Line	□ Placement Area	● Shoalest Sounding**	-16' to -21'
— As-built Pipeline/Cable	□ Anchorage Area	★ Beacon, General	-21' to -26'
..... Unconfirmed Pipeline/Cable	⊗ Obstruction Point	◆ Red Navigation Buoy	-26' to -33'
— Project Depth Contour	⚓ Wrecks-Submerged	◆ Green Navigation Buoy	-33' to -39'
			-39' to -41'
			-41' to -43'
			-43' and below



NOTES:
 1. Coordinate System: North American Datum of 1983 (NAD83), projected to the State Plane Coordinate System (SPCS), Louisiana South Zone. Distance units in U.S. Survey Feet.
 2. Vertical Datum: Soundings are shown in feet and indicate depths below Mean Lower Low Water Datum (MLLW). Datum Relationships for gage 73650 as of December 2013: 0.0' NAVD88 (2009.55) = 1.3' MLLW = 2.3' MLG or 0.0' MLLW = 1.0' MLG
 3. Distances on the Calcasieu River are shown at 1 mile intervals.
 4. The location of navigation aids are based on and provided by the U.S. Coast Guard and USACE survey crews.
 5. 2015 Aerial Photography data source: NAIP
 Reference is N.O.A.A. Navigation Chart No. 11339.
 * Difference between high and low frequency elevations where greater than 1.0'.
 ** Shoalest Sounding per Quarter per Reach.
 *** High frequency (200 kHz) survey data represents the first signal return at a sounding location and will include suspended solids, known as "fluff", if present. Low frequency (20 kHz) survey data normally penetrates through this "fluff" layer to depict elevations of consolidated bottom material. Low frequency accuracies may vary depending on channel conditions and fathometer settings.