

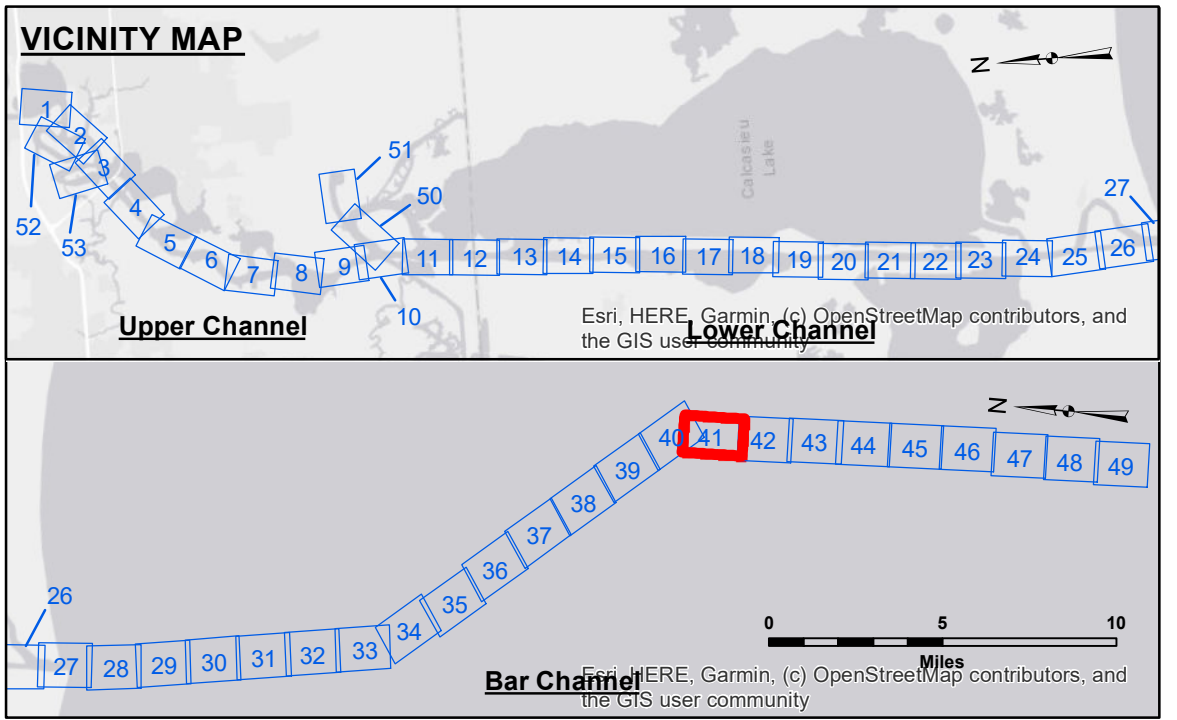
Access Constraints: The United States Government furnishes these data and the recipient accepts and uses them with the express understanding that the data are not to be used for any purpose other than that for which they were originally collected, and that the user is responsible for the results of any use of the data for other than its intended purpose.

Distribution Liability: The data represents the results of data collection/processing for a specific US Army Corps of Engineers project. It is only valid for its intended use, content, time and accuracy specifications. The user is responsible for the results of any use of the data for other than its intended purpose.

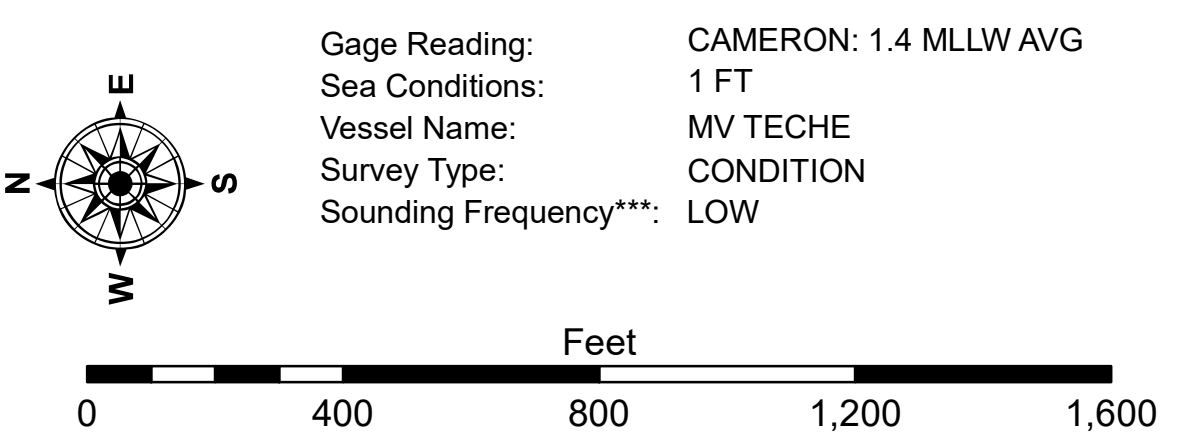
Data Constraints: Hydrographic survey data is subject to change rapidly due to several factors including but not limited to dredging operations, channel migration, and other factors. The user is responsible for the results of any use of the data for other than its intended purpose. The information depicted on the map represents the results of a hydrographic survey which was conducted under the date of the survey. The user is responsible for the results of any use of the data for other than its intended purpose.

U.S. ARMY CORPS OF ENGINEERS NEW ORLEANS DISTRICT		
Submitted:	Surveyed By: PS/KC	Plotted By: JH
Recommended:	Chief, Survey Section	Checked By: JH
Approved:	Chief, Waterways Maintenance Section	

CALCASIEU SHIP CHANNEL
BAR SHEET 41
CR_41_BAR_20240913_CS_POSTSTORM
13 September 2024



LEGEND	
--- Federal Navigation Channel	○ Cable Area
— Federal Navigation Center Line	□ Placement Area
— As-built Pipeline/Cable	□ Anchorage Area
..... Unconfirmed Pipeline/Cable	⊗ Obstruction Point
— Project Depth Contour	⚓ Wrecks-Submerged
3 Fluff Thickness (feet)*	★ Beacon, General
● Shoalest Sounding**	◆ Red Navigation Buoy
◆ Green Navigation Buoy	



NOTES:

Coordinate System: North American Datum of 1983 (NAD83), projected to the State Plane Coordinate System (SPCS), Louisiana South Zone. Distance units in U.S. Survey Feet.

Vertical Datum: Sounding Relationships for gage 73650 as of December 2013: 0.0' NAVD88 (2009.55) = 1.3' MLLW = 2.3' MLG or 0.0' MLLW = 1.0' MLG

Distances on the Calcasieu River are shown at 1 mile intervals.

The location of navigation aids are based on and provided by the U.S. Coast Guard and USACE survey crews.

2015 Aerial Photography data source: NAIP

Reference is N.O.A.A. Navigation Chart No. 11339.

* Difference between high and low frequency elevations where greater than 1.0'.

** Shoalest Sounding per Quarter per Reach.

*** High frequency (200 kHz) survey data represents the first signal return at a sounding location and will include suspended solids, known as "fluff", if present. Low frequency (20 kHz) survey data normally penetrates through this "fluff" layer to depict elevations of consolidated bottom material. Low frequency accuracies may vary depending on channel conditions and fathometer settings.

Sheet Reference Number
41 of 53

Revision Number:
 4.2-20240913