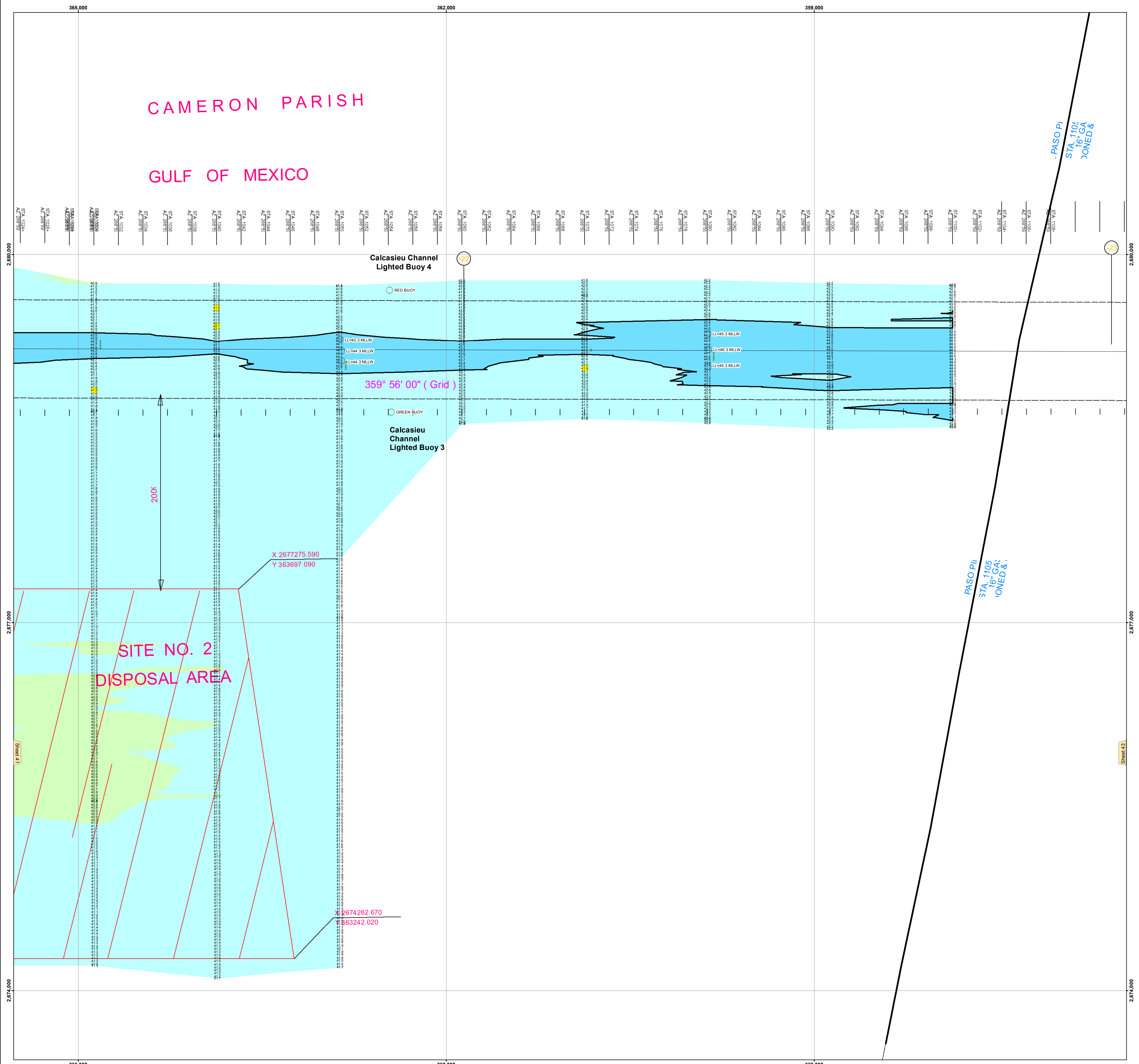


CAMERON PARISH

GULF OF MEXICO



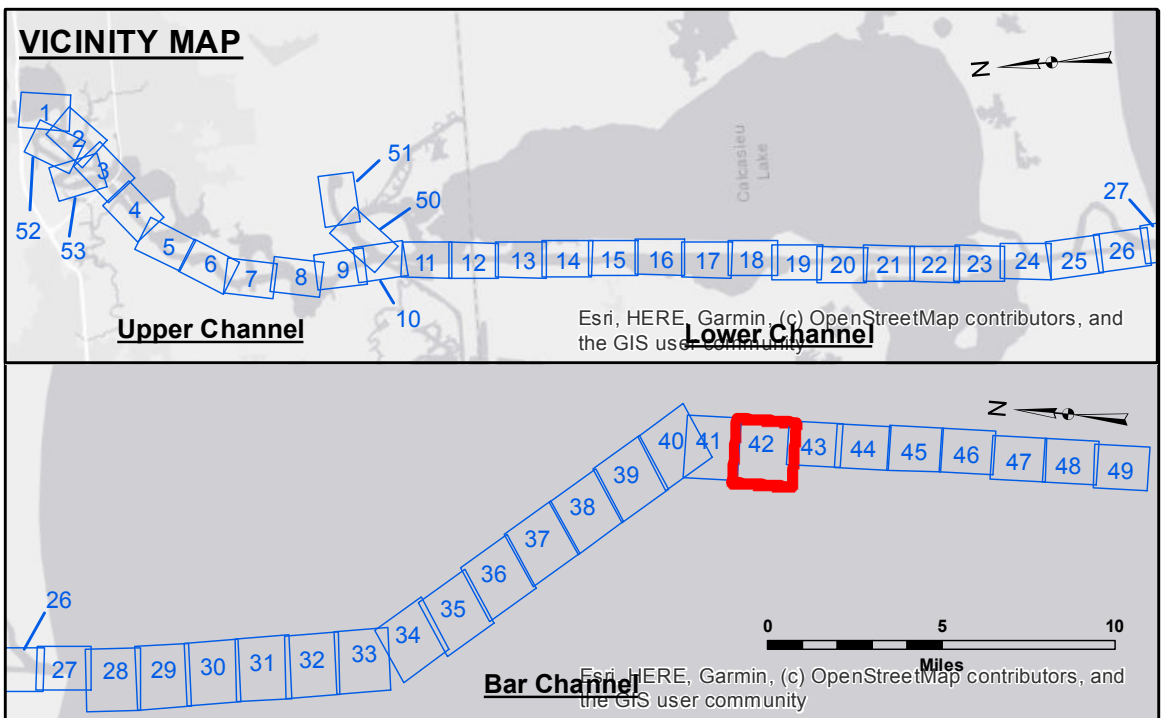
**DISCLAIMER**  
The United States Government furnishes this information for the general information of the user and does not warrant, represent, or guarantee the accuracy, reliability, or availability of the information for any purpose other than that for which it was prepared. The user is responsible for the results of any use of the information. The user is advised to consult the appropriate technical manuals and publications for the proper use of the information. The user is advised to consult the appropriate technical manuals and publications for the proper use of the information. The user is advised to consult the appropriate technical manuals and publications for the proper use of the information.

Submitted:	Checked By:
Recommended:	Approved:
Chief, Survey Section	Chief, Waterways Maintenance Section

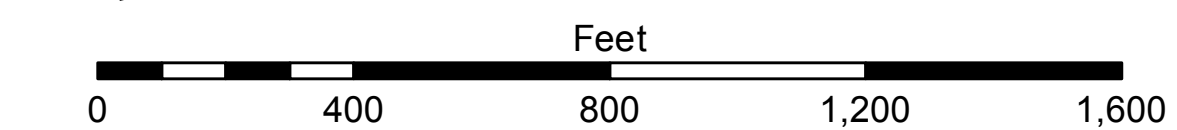
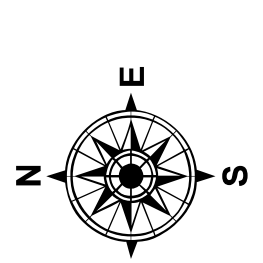
**CALCASIEU SHIP CHANNEL**  
BAR SHEET 42  
CR\_42\_BARX\_20210104\_CS  
04 January 2021

Sheet Reference Number  
42 of 53

Revision Number:  
41-20181165



LEGEND	
--- Federal Navigation Channel	● Cable Area
— Federal Navigation Center Line	□ Placement Area
— As-built Pipeline/Cable	□ Anchorage Area
--- Unconfirmed Pipeline/Cable	⊗ Obstruction Point
— Project Depth Contour	⚓ Wrecks-Submerged
3 Fluff Thickness (feet)*	★ Beacon, General
● Shoalest Sounding**	★ Red Navigation Buoy
★ Beacon, General	◆ Green Navigation Buoy
★ Red Navigation Buoy	
◆ Green Navigation Buoy	



Gage Reading: CAMERON: 0.72 MLLW AVG.  
Sea Conditions: 1-2 FT  
Vessel Name: M/V LAFOURCHE  
Survey Type: CS  
Sounding Frequency\*\*\*: LOW

**NOTES:**  
Horizontal Coordinate System:  
North American Datum of 1983 (NAD83), projected to the State Plane Coordinate System (SPCS), Louisiana South Zone. Distance units in U.S. Survey Feet.  
Vertical Datum:  
Soundings are shown in feet and indicate depths below Mean Lower Low Water Datum (MLLW). Datum Relationships for page 73650 as of December 2013:  
0.0' NAVD88 (2009.55) = 1.3' MLLW = 2.3' MLG or 0.0' MLLW = 1.0' MLG  
Distances on the Calcasieu River are shown at 1 mile intervals.  
The location of navigation aids are based on and provided by the U.S. Coast Guard and USACE survey crews.  
2015 Aerial Photography data source: NAIP  
Reference is N.O.A. Navigation Chart No. 11339.  
\* Difference between high and low frequency elevations where greater than 1.0'.  
\*\* Shoalest Sounding per Quarter per Reach.  
\*\*\* High frequency (200 kHz) survey data represents the first signal return at a sounding location and will include suspended solids, known as "fluff", if present. Low frequency (20 kHz) survey data normally penetrates through this "fluff" layer to depict elevations of consolidated bottom material. Low frequency accuracies may vary depending on channel conditions and fathometer settings.