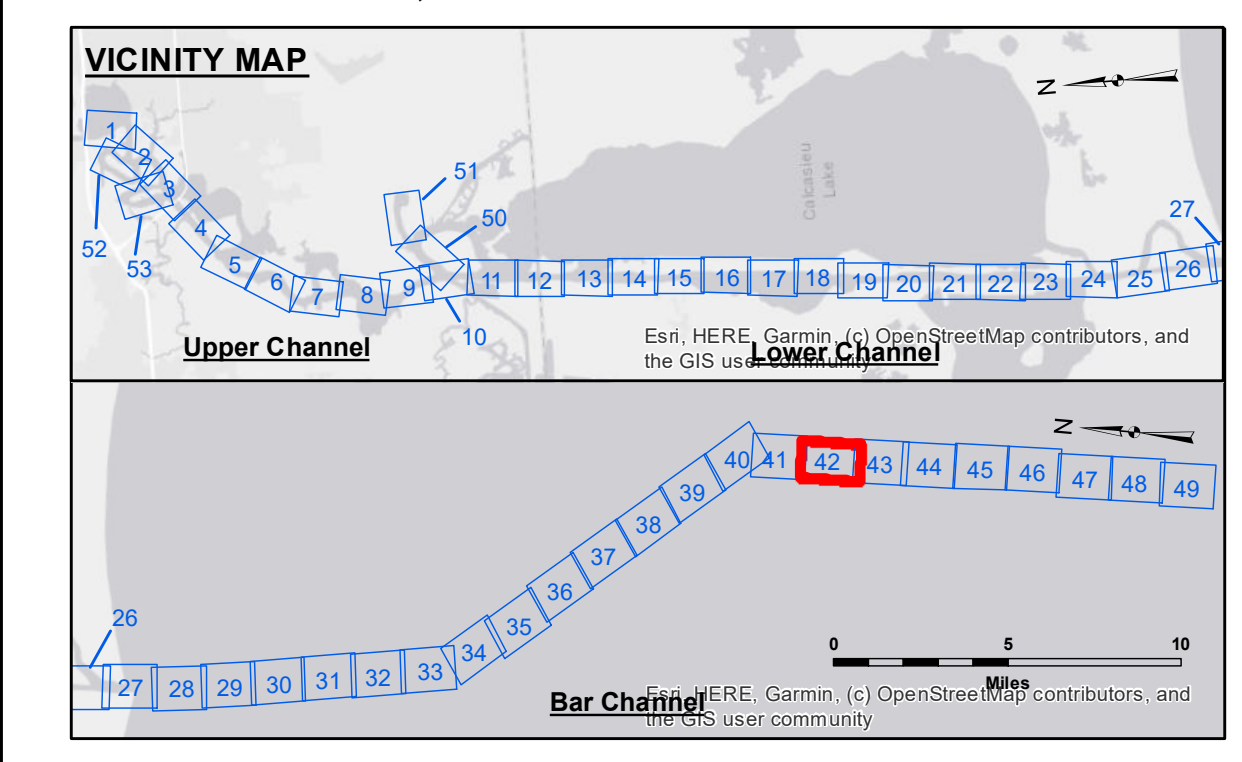
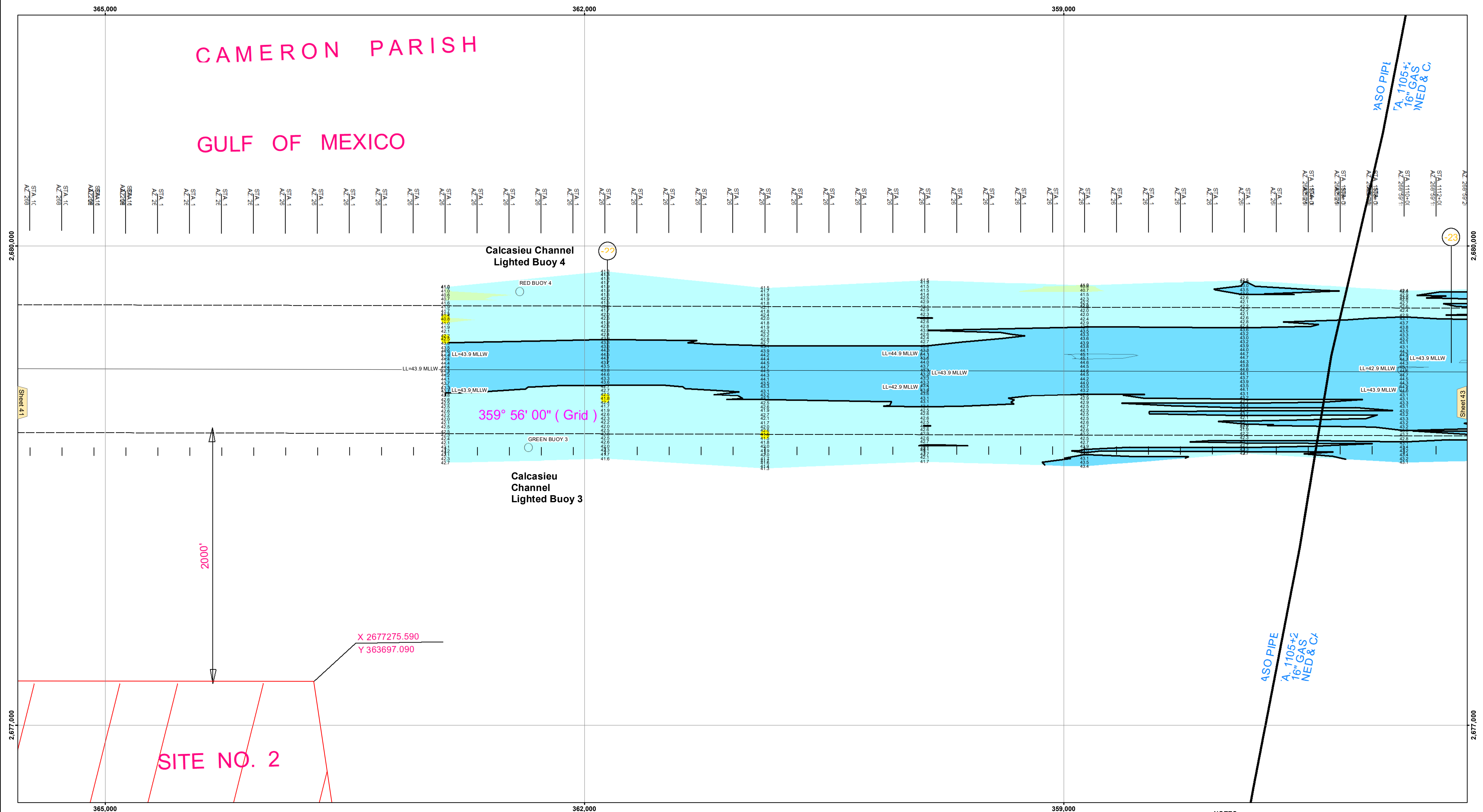
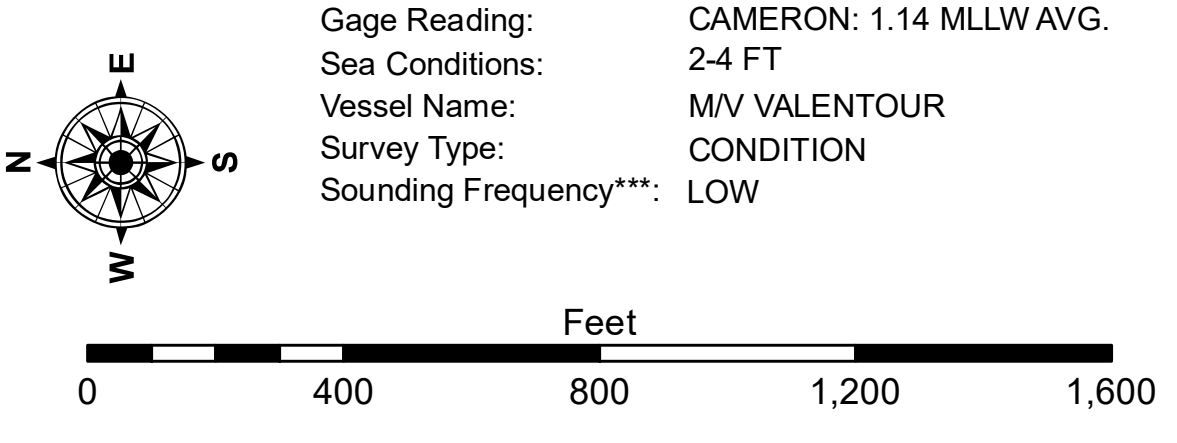


CAMERON PARISH  
GULF OF MEXICO



**LEGEND**

--- Federal Navigation Channel	○ Cable Area	3 Fluff Thickness (feet)*	■ -16' and above
— Federal Navigation Center Line	□ Placement Area	● Shoalest Sounding**	■ -16' to -21'
— As-built Pipeline/Cable	□ Anchorage Area	★ Beacon, General	■ -21' to -26'
..... Unconfirmed Pipeline/Cable	⊗ Obstruction Point	◆ Red Navigation Buoy	■ -26' to -33'
— Project Depth Contour	⚓ Wrecks-Submerged	◆ Green Navigation Buoy	■ -33' to -39'
			■ -39' to -41'
			■ -41' to -43'
			■ -43' and below



**NOTES:**  
 Coordinate System: North American Datum of 1983 (NAD83), projected to the State Plane Coordinate System (SPCS), Louisiana South Zone. Distance units in U.S. Survey Feet.  
 Vertical Datum: Soundings are shown in feet and indicate depths below Mean Lower Low Water Datum (MLLW). Datum Relationships for gage 73650 as of December 2013: 0.0' NAVD88 (2009.55) = 1.3' MLLW = 2.3' MLG or 0.0' MLLW = 1.0' MLG  
 Distances on the Calcasieu River are shown at 1 mile intervals.  
 The location of navigation aids are based on and provided by the U.S. Coast Guard and USACE survey crews.  
 2015 Aerial Photography data source: NAIP  
 Reference is N.O.A.A. Navigation Chart No. 11339.  
 \* Difference between high and low frequency elevations where greater than 1.0'.  
 \*\* Shoalest Sounding per Quarter per Reach.  
 \*\*\* High frequency (200 kHz) survey data represents the first signal return at a sounding location and will include suspended solids, known as "fluff", if present. Low frequency (20 kHz) survey data normally penetrates through this "fluff" layer to depict elevations of consolidated bottom material. Low frequency accuracies may vary depending on channel conditions and fathometer settings.



**DISCLAIMER:**  
 The information depicted on this map represents the results of a hydrographic survey conducted by the U.S. Army Corps of Engineers. The data is provided for informational purposes only and is not intended for navigation. The user is responsible for the accuracy, completeness, and reliability of the data. The U.S. Army Corps of Engineers does not warrant the accuracy, completeness, or reliability of the data for any purpose other than that for which it was collected. The user is responsible for the accuracy, completeness, and reliability of the data. The U.S. Army Corps of Engineers does not warrant the accuracy, completeness, or reliability of the data for any purpose other than that for which it was collected.

Submitted:	RYLAND/ADAMS
Recommended:	BD
Checked By:	AC

U.S. ARMY CORPS OF ENGINEERS  
NEW ORLEANS DISTRICT

**CALCASIEU SHIP CHANNEL**  
**BAR SHEET 42**  
**CR\_42\_BAR\_20191120\_CS**  
**20 November 2019**

**Sheet Reference Number**  
**42 of 53**