

**Access/Use:** The United States Government furnishes these data and the recipient accepts and uses them with the express understanding that the data are for informational purposes only. The data are not to be used for any purpose other than that for which they were collected. The user is responsible for the results of any use of the data. The user is responsible for the results of any use of the data. The user is responsible for the results of any use of the data.

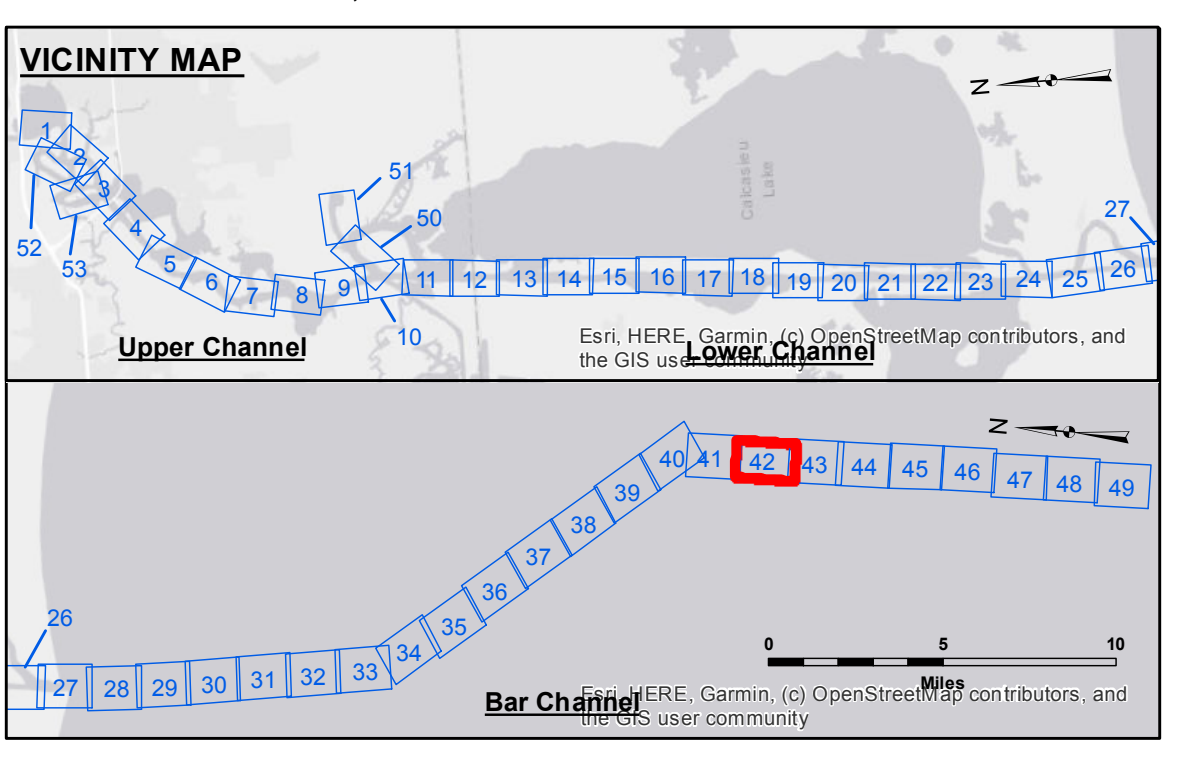
**Access/Use:** The United States Government furnishes these data and the recipient accepts and uses them with the express understanding that the data are for informational purposes only. The data are not to be used for any purpose other than that for which they were collected. The user is responsible for the results of any use of the data. The user is responsible for the results of any use of the data.

Submitted:	SPPS	Plotted By:	JH
Recommended:	Chief Survey Section	Checked By:	JH
Approved:	Chief Waterways Maintenance Section		

**CALCASIEU SHIP CHANNEL**  
**BAR SHEET 42**  
**CR\_42\_BAR\_20220316\_CS**  
**16 March 2022**

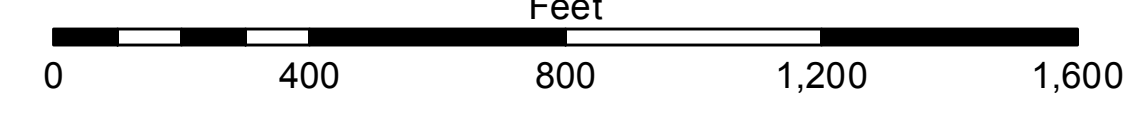
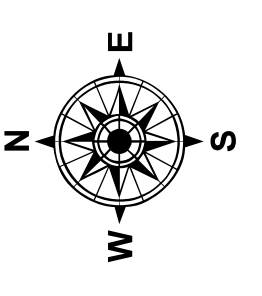
**Sheet Reference Number**  
**42 of 53**

Revision Number:  
 4.2-20220420



**LEGEND**

Federal Navigation Channel	Cable Area	Fluff Thickness (feet)*	-16' and above
Federal Navigation Center Line	Placement Area	Shoalest Sounding**	-16' to -21'
As-built Pipeline/Cable	Anchorage Area	Beacon, General	-21' to -26'
Unconfirmed Pipeline/Cable	Obstruction Point	Red Navigation Buoy	-26' to -33'
Project Depth Contour	Wrecks-Submerged	Green Navigation Buoy	-33' to -39'
			-39' to -41'
			-41' to -43'
			-43' and below



Gage Reading: VRS NTRIP: 0.9 MLLW AVG  
 Sea Conditions: CALM  
 Vessel Name: MV LAFOURCHE  
 Survey Type: CONDITION  
 Sounding Frequency\*\*\*: LOW

**NOTES:**  
 Coordinate System: North American Datum of 1983 (NAD83), projected to the State Plane Coordinate System (SPCS), Louisiana South Zone. Distance units in U.S. Survey Feet.  
 Datum: 0.0' NAVD88 (2009.55) = 1.3' MLLW = 2.3' MLG or 0.0' MLLW = 1.0' MLG  
 Distances on the Calcasieu River are shown at 1 mile intervals.  
 The location of navigation aids are based on and provided by the U.S. Coast Guard and USACE survey crews.  
 2015 Aerial Photography data source: NAIP  
 Reference is N.O.A.A. Navigation Chart No. 11339.  
 \* Difference between high and low frequency elevations where greater than 1.0'.  
 \*\* Shoalest Sounding per Quarter per Reach.  
 \*\*\* High frequency (200 kHz) survey data represents the first signal return at a sounding location and will include suspended solids, known as "fluff", if present. Low frequency (20 kHz) survey data normally penetrates through this "fluff" layer to depict elevations of consolidated bottom material. Low frequency accuracies may vary depending on channel conditions and fathometer settings.