



**US Army Corps of Engineers District: CEMV**

**DISCLAIMER**  
 The United States Government furnishes these data and the recipient accepts and uses them with the express understanding that the data are not warranted for any purpose other than that for which they were collected. The user is responsible for the results of any application of the data for other than its intended purpose.  
 Data Constraints: Hydrographic survey data is subject to change rapidly due to several factors including but not limited to dredging operations, sedimentation, and changes in bathymetry. The user is responsible for the results of any application of the data for other than its intended purpose.  
 The information depicted on this map represents the results of a hydrographic survey conducted on or about the date of the survey. It is not intended to represent the general condition existing at that time.

Submitted:	Surveyed By: SPS
Recommended:	Plotted By: JH
Approved:	Checked By: JH

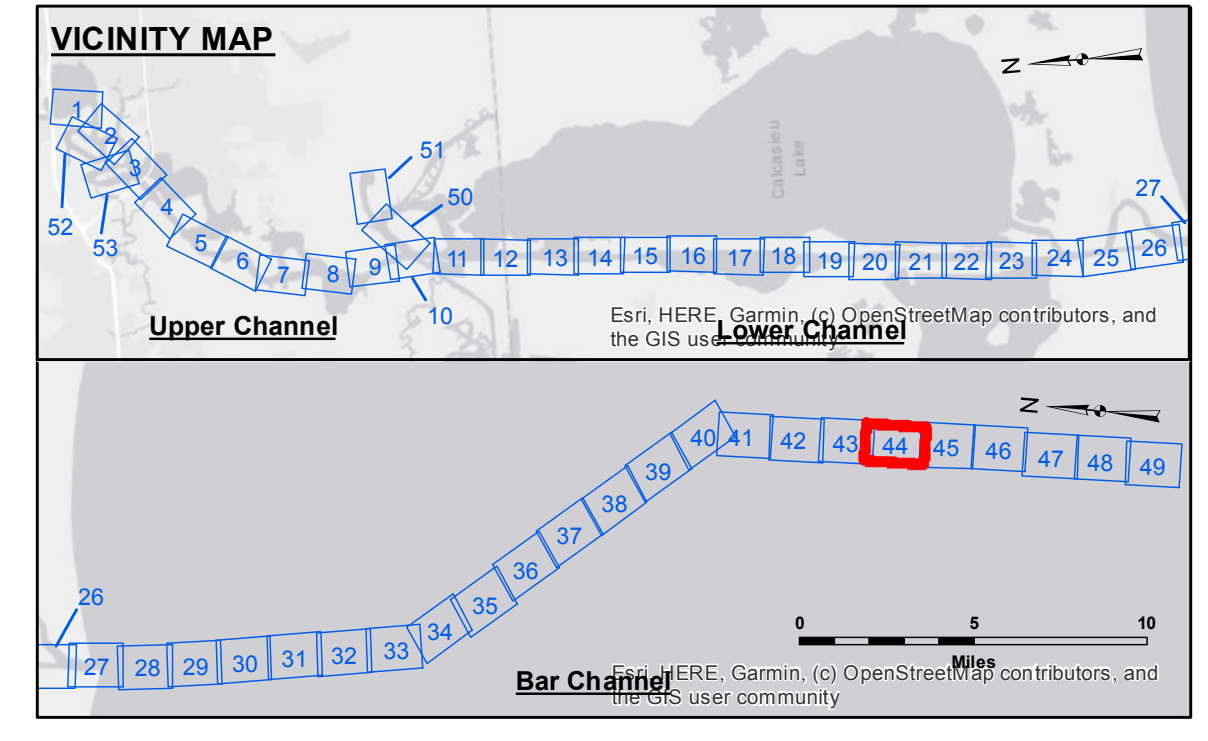
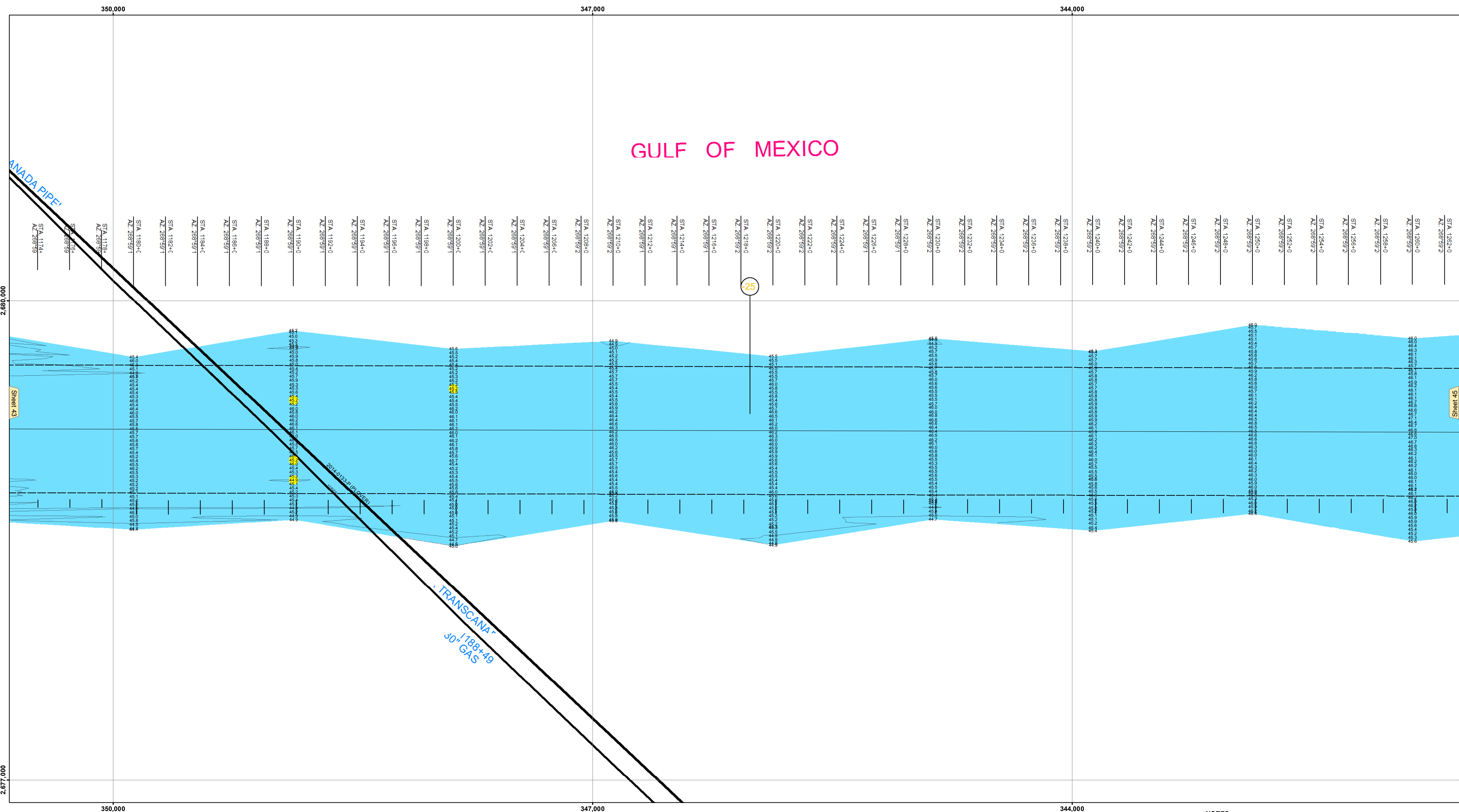
U.S. ARMY CORPS OF ENGINEERS  
NEW ORLEANS DISTRICT

Chief, Waterways Maintenance Section

**CALCASIEU SHIP CHANNEL**  
**BAR SHEET 44**  
**CR\_44\_BAR\_20220316\_CS**  
**16 March 2022**

**Sheet Reference Number**  
**44 of 53**

Revision Number:  
4.2-202 (04/20)



**LEGEND**

Federal Navigation Channel	Cable Area	Fluff Thickness (feet)*	-16' and above
Federal Navigation Center Line	Placement Area	Shoalest Sounding**	-16' to -21'
As-built Pipeline/Cable	Anchorage Area	Beacon, General	-21' to -26'
Unconfirmed Pipeline/Cable	Obstruction Point	Red Navigation Buoy	-26' to -33'
Project Depth Contour	Wrecks-Submerged	Green Navigation Buoy	-33' to -39'
			-39' to -41'
			-41' to -43'
			-43' and below

**NOTES:**

Coordinate System:  
North American Datum of 1983 (NAD83), projected to the State Plane Coordinate System (SPCS), Louisiana South Zone. Distance units in U.S. Survey Feet.

Vertical Datum:  
Soundings are shown in feet and indicate depths below Mean Lower Low Water Datum (MLLW). Datum Relationships for gage 73650 as of December 2013:  
0.0' NAVD88 (2009.55) = 1.3' MLLW = 2.3' MLG or 0.0' MLLW = 1.0' MLG

Distances on the Calcasieu River are shown at 1 mile intervals.

The location of navigation aids are base on and provided by the U.S. Coast Guard and USACE survey crews.

2015 Aerial Photography data source: NAIP  
Reference is N.O.A.A. Navigation Chart No. 11339.

\* Difference between high and low frequency elevations where greater than 1.0'.  
\*\* Shoalest Sounding per Quarter per Reach.

\*\*\* High frequency (200 kHz) survey data represents the first signal return at a sounding location and will include suspended solids, known as "fluff", if present. Low frequency (20 kHz) survey data normally penetrates through this "fluff" layer to depict elevations of consolidated bottom material. Low frequency accuracies may vary depending on channel conditions and fathometer settings.

Gage Reading: VRS NTRIP: 0.9 MLLW AVG  
 Sea Conditions: CALM  
 Vessel Name: MV LAFOURCHE  
 Survey Type: CONDITION  
 Sounding Frequency\*\*\*: LOW

Feet  
0 400 800 1,200 1,600

**NOTES:**

Coordinate System:  
North American Datum of 1983 (NAD83), projected to the State Plane Coordinate System (SPCS), Louisiana South Zone. Distance units in U.S. Survey Feet.

Vertical Datum:  
Soundings are shown in feet and indicate depths below Mean Lower Low Water Datum (MLLW). Datum Relationships for gage 73650 as of December 2013:  
0.0' NAVD88 (2009.55) = 1.3' MLLW = 2.3' MLG or 0.0' MLLW = 1.0' MLG

Distances on the Calcasieu River are shown at 1 mile intervals.

The location of navigation aids are base on and provided by the U.S. Coast Guard and USACE survey crews.

2015 Aerial Photography data source: NAIP  
Reference is N.O.A.A. Navigation Chart No. 11339.

\* Difference between high and low frequency elevations where greater than 1.0'.  
\*\* Shoalest Sounding per Quarter per Reach.

\*\*\* High frequency (200 kHz) survey data represents the first signal return at a sounding location and will include suspended solids, known as "fluff", if present. Low frequency (20 kHz) survey data normally penetrates through this "fluff" layer to depict elevations of consolidated bottom material. Low frequency accuracies may vary depending on channel conditions and fathometer settings.