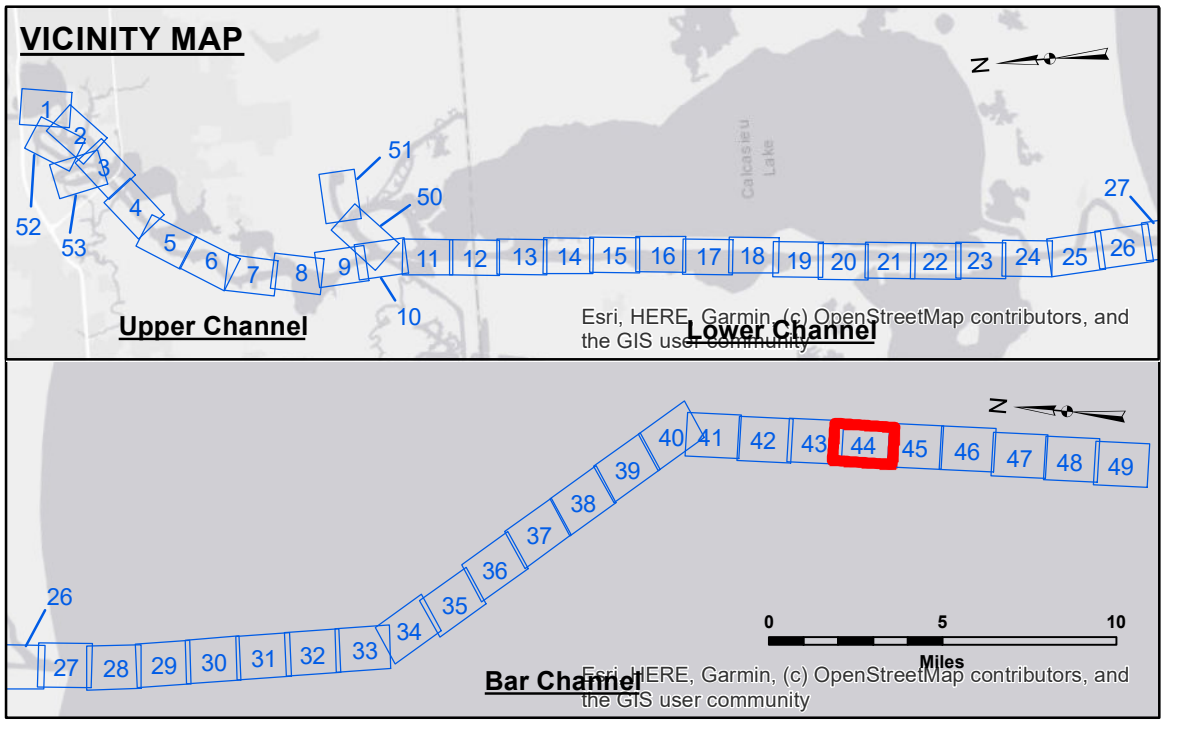


DISCLAIMER
 The United States Government furnishes these data and the recipient accepts and uses them with the express understanding that they are not intended for navigation. The user is responsible for the accuracy, completeness, reliability, usability or suitability for any particular purpose of the information. The user is responsible for the results of any use of the information, including any liability, damages, or losses, under no liability whatsoever to any person by reason of any use of the information. The recipient may not transfer, disseminate, or use the information for any purpose other than that for which it was provided. The recipient may not transfer these data to others without also transferring the Disclaimer. The information depicted on the map represents the results of a survey conducted on the ground and is not to be considered to represent the general condition existing at that time.

U.S. ARMY CORPS OF ENGINEERS NEW ORLEANS DISTRICT		
Submitted:	Surveyed By: SP-JS	Plotted By: BD
Recommended:	Checked By: AD/JH	Checked By: AD/JH
Approved:	Chief, Waterways Maintenance Section	

CALCASIEU SHIP CHANNEL
BAR SHEET 44
CR_44_BAR_20241218_CS
18 December 2024

Sheet Reference Number
44 of 53



LEGEND

- Federal Navigation Channel
- Federal Navigation Center Line
- As-built Pipeline/Cable
- Unconfirmed Pipeline/Cable
- Project Depth Contour
- Cable Area
- Placement Area
- Anchorage Area
- Obstruction Point
- Wrecks-Submerged
- Fluff Thickness (feet)*
- Shoalest Sounding**
- Beacon, General
- Red Navigation Buoy
- Green Navigation Buoy

	-16' and above
	-16' to -21'
	-21' to -26'
	-26' to -33'
	-33' to -39'
	-39' to -41'
	-41' to -43'
	-43' and below

Gage Reading: CAMERON: -0.02 MLLW AVG.
Sea Conditions: CHOPPY
Vessel Name: M/V TECHE
Survey Type: CONDITION
Sounding Frequency*:** HIGH/LOW

Vertical Datum:
 Soundings are shown in feet and indicate depths below Mean Lower Low Water Datum (MLLW).
 Datum Relationships for gage 73650 as of December 2013:
 0.0' NAVD88 (2009.55) = 1.3' MLLW = 2.3' MLG or 0.0' MLLW = 1.0' MLG

Distances on the Calcasieu River are shown at 1 mile intervals.
 The location of navigation aids are based on and provided by the U.S. Coast Guard and USACE survey crews.

2015 Aerial Photography data source: NAIP
 Reference is N.O.A.A. Navigation Chart No. 11339.

*** High frequency (200 kHz) survey data represents the first signal return at a sounding location and will include suspended solids, known as "fluff", if present. Low frequency (20 kHz) survey data normally penetrates through this "fluff" layer to depict elevations of consolidated bottom material. Low frequency accuracies may vary depending on channel conditions and fathometer settings.

NOTES:
 Coordinate System:
 North American Datum of 1983 (NAD83), projected to the State Plane
 Coordinate System (SPCS), Louisiana South Zone. Distance units in U.S. Survey Feet.