

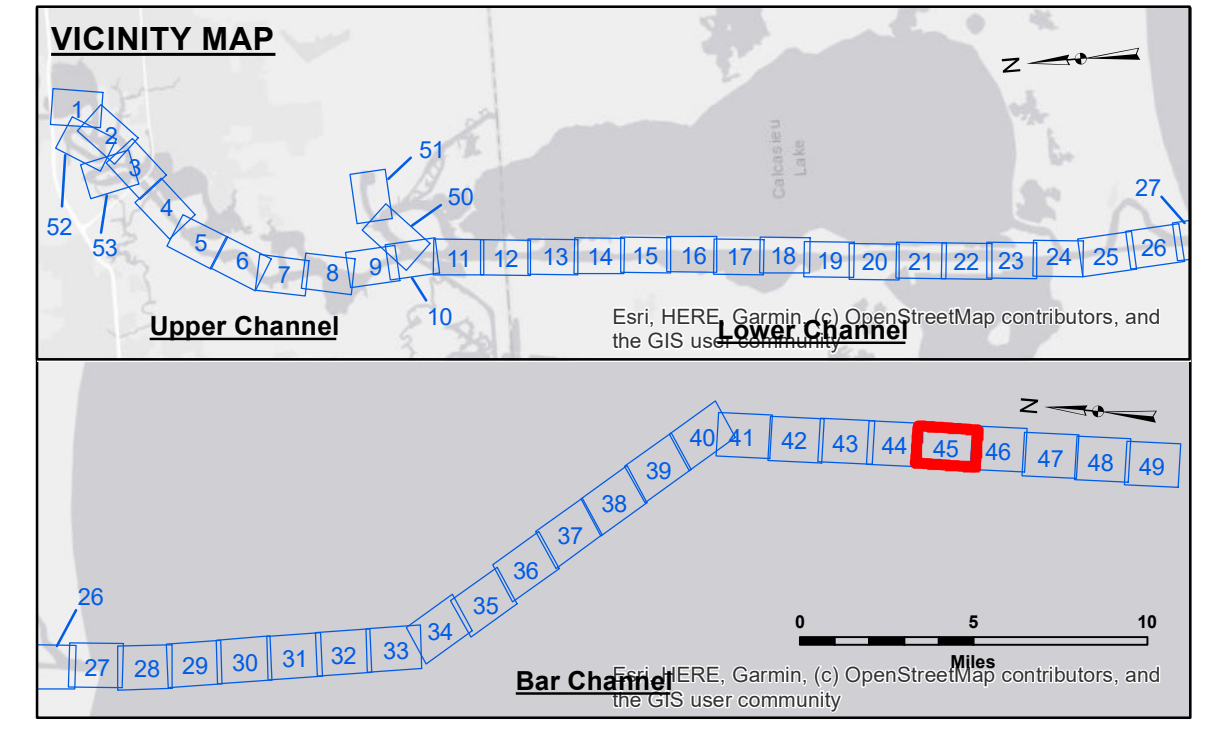
GULF OF MEXICO

1274-
24" GAS

000 099Z

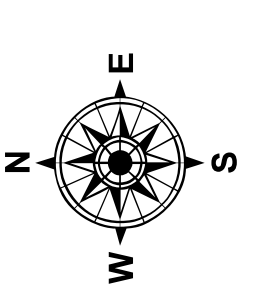
2680 000

2,677,000 341,000 338,000 335,000 2,677,000

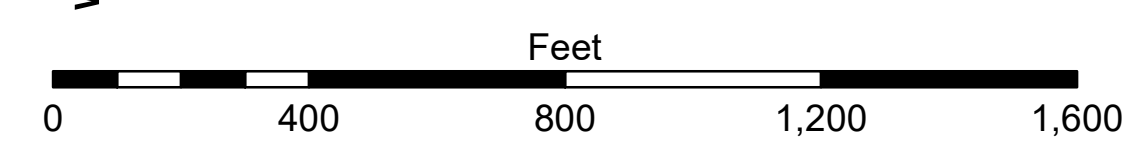


LEGEND

--- Federal Navigation Channel	○ Cable Area	3 Fluff Thickness (feet)*	■ -16' and above
— Federal Navigation Center Line	□ Placement Area	● Shoalest Sounding**	■ -16' to -21'
— As-built Pipeline/Cable	□ Anchorage Area	★ Beacon, General	■ -21' to -26'
..... Unconfirmed Pipeline/Cable	⊗ Obstruction Point	◆ Red Navigation Buoy	■ -26' to -33'
— Project Depth Contour	⚓ Wrecks-Submerged	◆ Green Navigation Buoy	■ -33' to -39'
			■ -39' to -41'
			■ -41' to -43'
			■ -43' and below



Gage Reading: CAMERON: -0.02 MLLW AVG.
 Sea Conditions: CHOPPY
 Vessel Name: MV TECHE
 Survey Type: CONDITION
 Sounding Frequency***: HIGH/LOW



NOTES
 335,000
 North American Datum of 1983 (NAD83), projected to the State Plane Coordinate System (SPCS), Louisiana South Zone. Distance units in U.S. Survey Feet.

Vertical Datum:
 Soundings are shown in feet and indicate depths below Mean Lower Low Water Datum (MLLW).
 Datum Relationships for gage 73650 as of December 2013:
 0.0' NAVD88 (2009.55) = 1.3' MLLW = 2.3' MLG or 0.0' MLLW = 1.0' MLG

Distances on the Calcasieu River are shown at 1 mile intervals.
 The location of navigation aids are base on and provided by the U.S. Coast Guard and USACE survey crews.

2015 Aerial Photography data source: NAIP
 Reference is N.O.A.A. Navigation Chart No. 11339.

* Difference between high and low frequency elevations where greater than 1.0'.
 ** Shoalest Sounding per Quarter per Reach.

*** High frequency (200 kHz) survey data represents the first signal return at a sounding location and will include suspended solids, known as "fluff", if present. Low frequency (20 kHz) survey data normally penetrates through this "fluff" layer to depict elevations of consolidated bottom material. Low frequency accuracies may vary depending on channel conditions and fathometer settings.



DISCLAIMER
 Access, Copiers, etc. The United States Government furnishes these data and the recipient accepts and uses them with the express understanding that the data are not to be used for any purpose other than that for which they were prepared. The user is responsible for the results of any use of the data for other than its intended purpose.
 Distribution Liability: The data represents the results of data collection/processing for a specific US Army Corps of Engineers project. It is only valid for its intended use, content, time and accuracy specifications. The user is responsible for the results of any use of the data for other than its intended purpose.
 Data Constants: Hydrographic survey data is subject to change rapidly due to several factors including, but not limited to, changing hydrological conditions which develop after the date of the survey. The US Army Corps of Engineers accepts no responsibility for changes in the hydrological conditions which develop after the date of the survey. The information depicted on this map represents the results of a survey conducted on the general condition existing at that time.

U.S. ARMY CORPS OF ENGINEERS NEW ORLEANS DISTRICT		
Submitted:	Surveyed By: SP-JS	Plotted By: BD
Recommended: Chart, Survey Section	Checked By: AD/JH	
Approved:	Chart, Waterways Maintenance Section	

CALCASIEU SHIP CHANNEL
BAR SHEET 45
CR_45_BAR_20241218_CS
18 December 2024

Sheet Reference Number
45 of 53

Revision Number:
 4.2-20200420