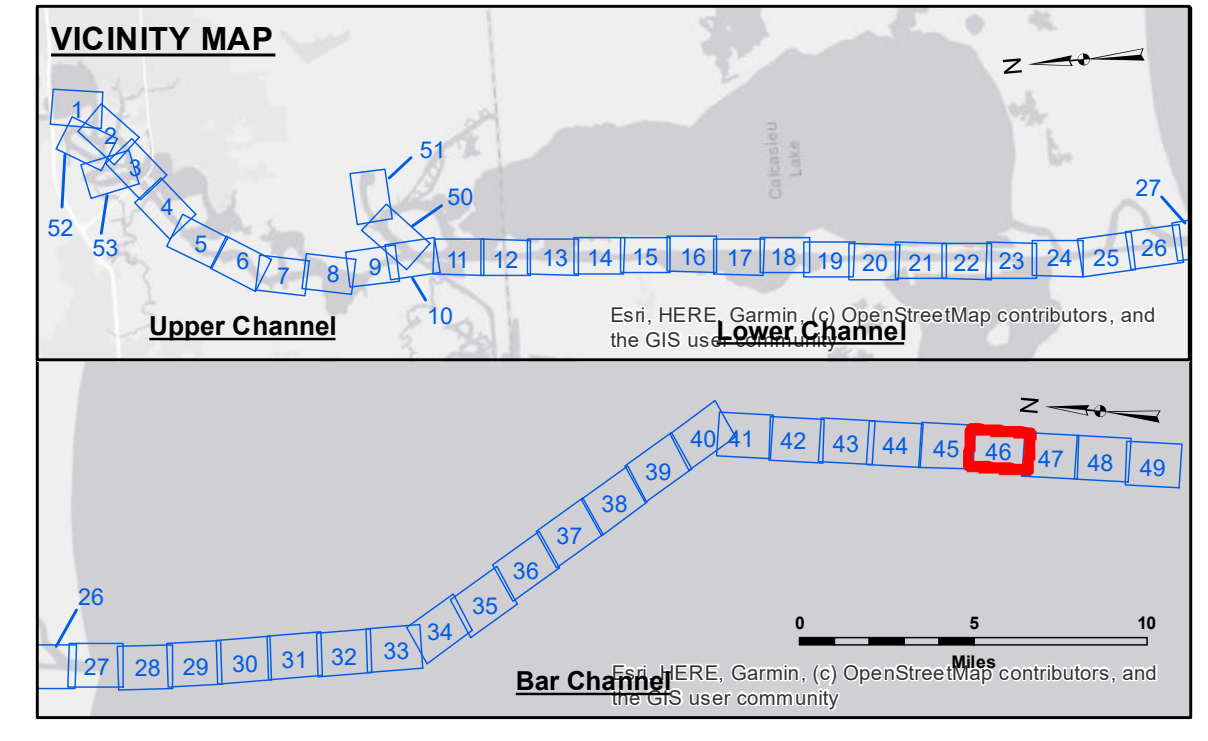
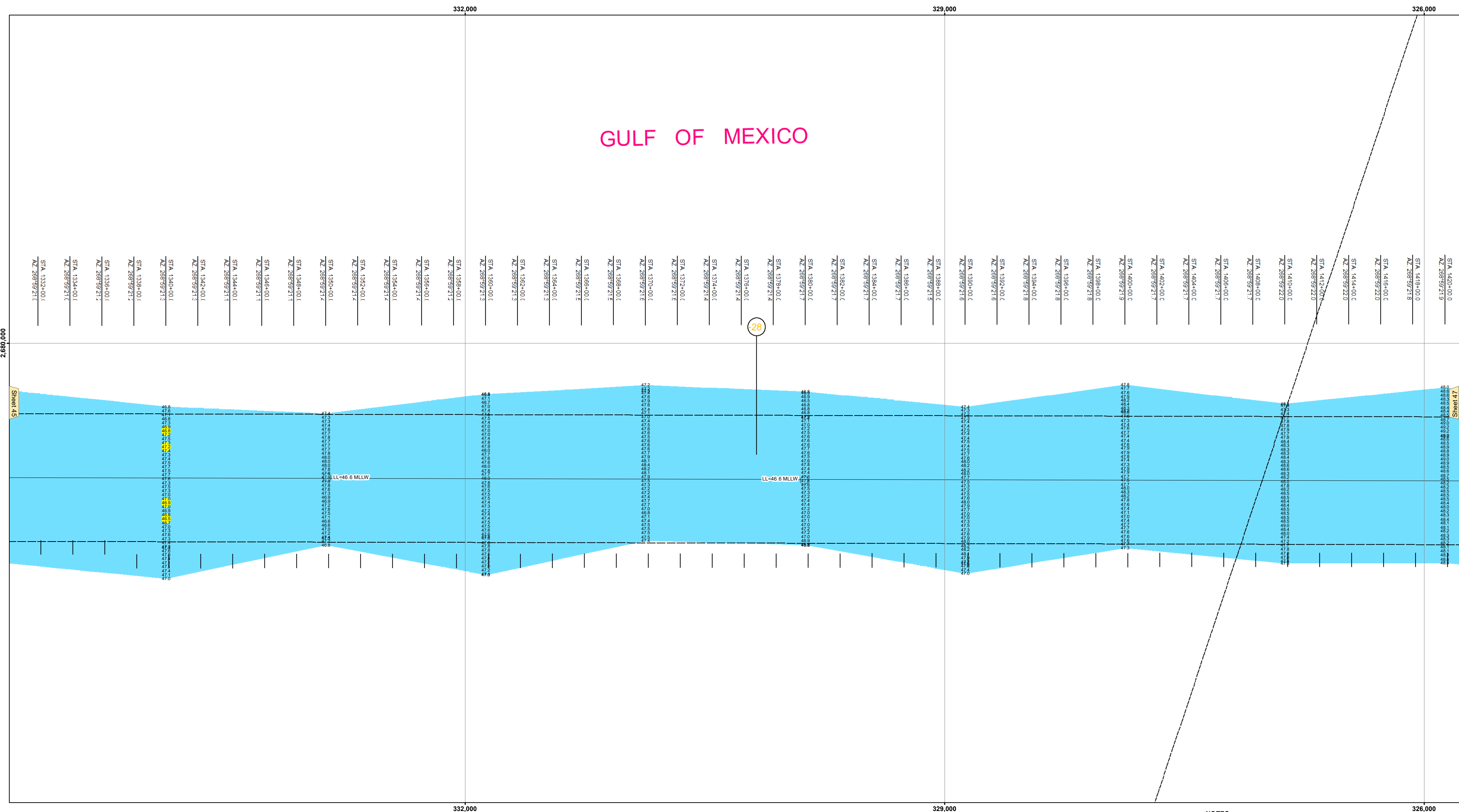


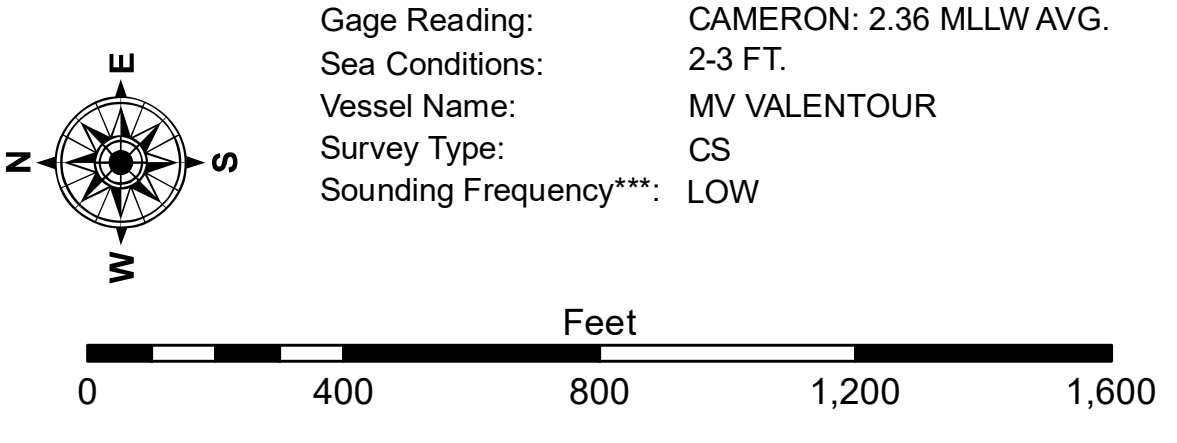


**US Army Corps of Engineers District: CEMV**

**DISCLAIMER:** The data represented on this map represents the results of a hydrographic survey conducted by the U.S. Army Corps of Engineers. The data is only valid for its intended use, control, time and accuracy specifications. The user is responsible for the results of any application of the data for other than its intended purpose. The information depicted on this map represents the results of a hydrographic survey conducted by the U.S. Army Corps of Engineers. The data is only valid for its intended use, control, time and accuracy specifications. The user is responsible for the results of any application of the data for other than its intended purpose. The information depicted on this map represents the results of a hydrographic survey conducted by the U.S. Army Corps of Engineers. The data is only valid for its intended use, control, time and accuracy specifications. The user is responsible for the results of any application of the data for other than its intended purpose.



| LEGEND                           |                     |                           |                |
|----------------------------------|---------------------|---------------------------|----------------|
| --- Federal Navigation Channel   | ○ Cable Area        | 3 Fluff Thickness (feet)* | -16' and above |
| — Federal Navigation Center Line | □ Placement Area    | ● Shoalest Sounding**     | -16' to -21'   |
| — As-built Pipeline/Cable        | □ Anchorage Area    | ★ Beacon, General         | -21' to -26'   |
| ..... Unconfirmed Pipeline/Cable | ⊗ Obstruction Point | ◆ Red Navigation Buoy     | -26' to -33'   |
| — Project Depth Contour          | ⚓ Wrecks-Submerged  | ◆ Green Navigation Buoy   | -33' to -39'   |
|                                  |                     |                           | -39' to -41'   |
|                                  |                     |                           | -41' to -43'   |
|                                  |                     |                           | -43' and below |



**NOTES:**  
 1. Coordinate System: North American Datum of 1983 (NAD83), projected to the State Plane Coordinate System (SPCS), Louisiana South Zone. Distance units in U.S. Survey Feet.  
 2. Vertical Datum: Soundings are shown in feet and indicate depths below Mean Lower Low Water Datum (MLLW). Datum Relationships for gage 73650 as of December 2013: 0.0' NAVD88 (2009.55) = 1.3' MLLW = 2.3' MLG or 0.0' MLLW = 1.0' MLG  
 3. Distances on the Calcasieu River are shown at 1 mile intervals.  
 4. The location of navigation aids are based on and provided by the U.S. Coast Guard and USACE survey crews.  
 5. 2015 Aerial Photography data source: NAIP  
 Reference is N.O.A.A. Navigation Chart No. 11339.  
 \* Difference between high and low frequency elevations where greater than 1.0'.  
 \*\* Shoalest Sounding per Quarter per Reach.  
 \*\*\* High frequency (200 kHz) survey data represents the first signal return at a sounding location and will include suspended solids, known as "fluff", if present. Low frequency (20 kHz) survey data normally penetrates through this "fluff" layer to depict elevations of consolidated bottom material. Low frequency accuracies may vary depending on channel conditions and fathometer settings.

|  |                                      |                   |
|--|--------------------------------------|-------------------|
| U.S. ARMY CORPS OF ENGINEERS<br>NEW ORLEANS DISTRICT |                                      |                   |
| Submitted:   | Surveyed By:<br>RYLAND/ADAMS         | Plotted By:<br>BD |
| Recommended:   | Checked By:<br>AC                    | Checked By:<br>AC |
| Approved:  | Chief, Waterways Maintenance Section |                   |

**CALCASIEU SHIP CHANNEL  
 BAR SHEET 46  
 CR\_46\_BAR\_20200731\_CS  
 31 July 2020**

**Sheet Reference Number  
 46 of 53**

Revision Number:  
 4.1-20191105