



US Army Corps of Engineers District: CEMVN

NOTES: The data represents the results of data collection/processing for a specific US Army Corps of Engineers project. The data is only valid for its intended use, control, time and accuracy specifications. The user is responsible for the results of any application of the data for other than its intended purpose.

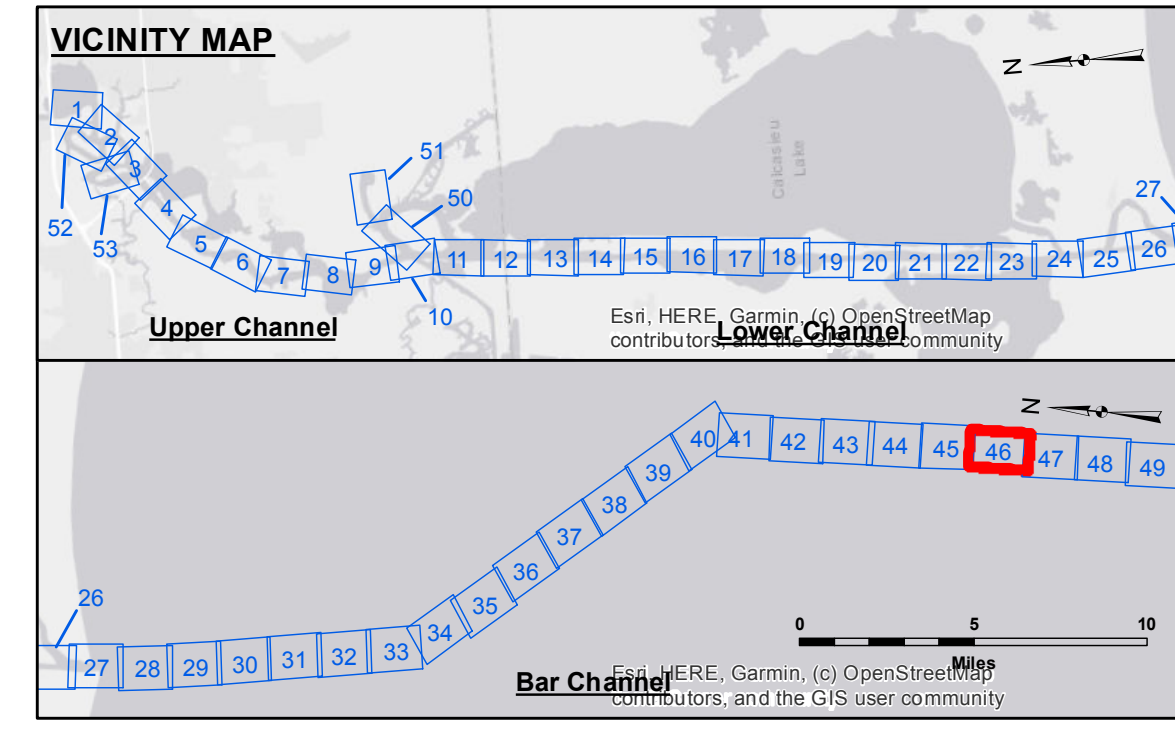
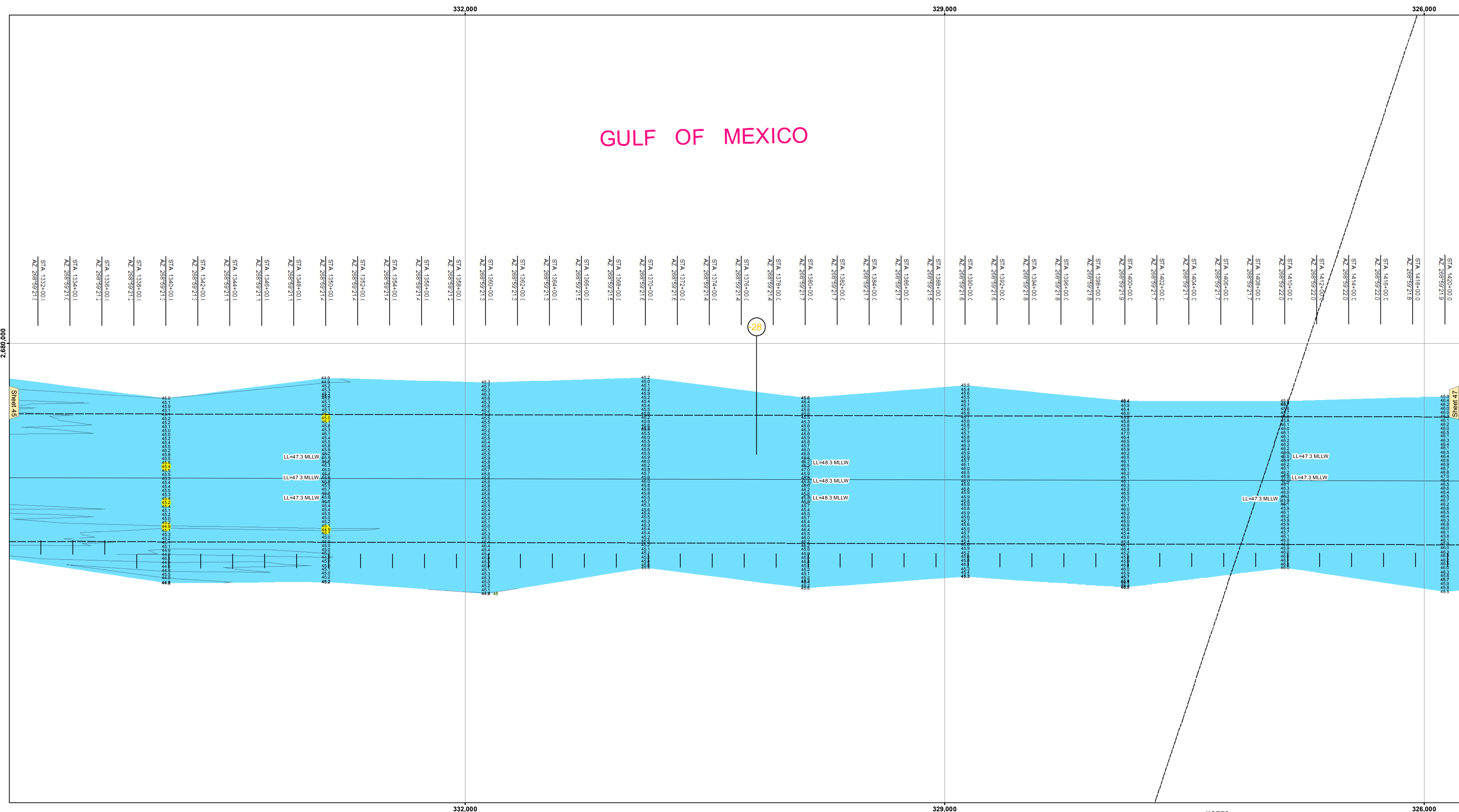
Data Constraints: Hydrographic survey data is subject to change rapidly due to several factors including but not limited to changing bathymetry, sedimentation, and other factors. The user is responsible for the hydrographical conditions which develop after the date of the survey. The US Army Corps of Engineers accepts no responsibility for changes in the hydrographical conditions which develop after the date of the survey. The user is responsible for the accuracy of the data used to represent the general condition existing at that time.

| | |
|---|-------------------|
| Submitted: | Surveyed By: SPPS |
| Recommended: Chief Survey Section | Plotted By: BD |
| Approved: Chief Waterways Maintenance Section | Checked By: AC |

CALCASIEU SHIP CHANNEL
BAR SHEET 46
CR_46_BAR_20220302_CS
02 March 2022

Sheet Reference Number
46 of 53

Revision Number:
 4.2-20220302



| LEGEND | |
|----------------------------------|-----------------------|
| --- Federal Navigation Channel | ○ Cable Area |
| — Federal Navigation Center Line | □ Placement Area |
| — As-built Pipeline/Cable | □ Anchorage Area |
| Unconfirmed Pipeline/Cable | ⊗ Obstruction Point |
| — Project Depth Contour | ⚓ Wrecks-Submerged |
| 3 Fluff Thickness (feet)* | ★ Beacon, General |
| ● Shoalest Sounding** | ◆ Red Navigation Buoy |
| ○ Green Navigation Buoy | |

NOTES:

Coordinate System: North American Datum of 1983 (NAD83), projected to the State Plane Coordinate System (SPCS), Louisiana South Zone. Distance units in U.S. Survey Feet.

Vertical Datum: CAMERON: 0.67 MLLW AVG.

Gage Reading: CALM

Sea Conditions: MV LAFOURCHE

Vessel Name: CONDITION

Survey Type: HIGH/LOW

Sounding Frequency***:

Distances on the Calcasieu River are shown at 1 mile intervals.

The location of navigation aids are based on and provided by the U.S. Coast Guard and USACE survey crews.

2015 Aerial Photography data source: NAIP

Reference is N.O.A.A. Navigation Chart No. 11339.

* Difference between high and low frequency elevations where greater than 1.0'.

** Shoalest Sounding per Quarter per Reach.

*** High frequency (200 kHz) survey data represents the first signal return at a sounding location and will include suspended solids, known as "fluff", if present. Low frequency (20 kHz) survey data normally penetrates through this "fluff" layer to depict elevations of consolidated bottom material. Low frequency accuracies may vary depending on channel conditions and fathometer settings.

