



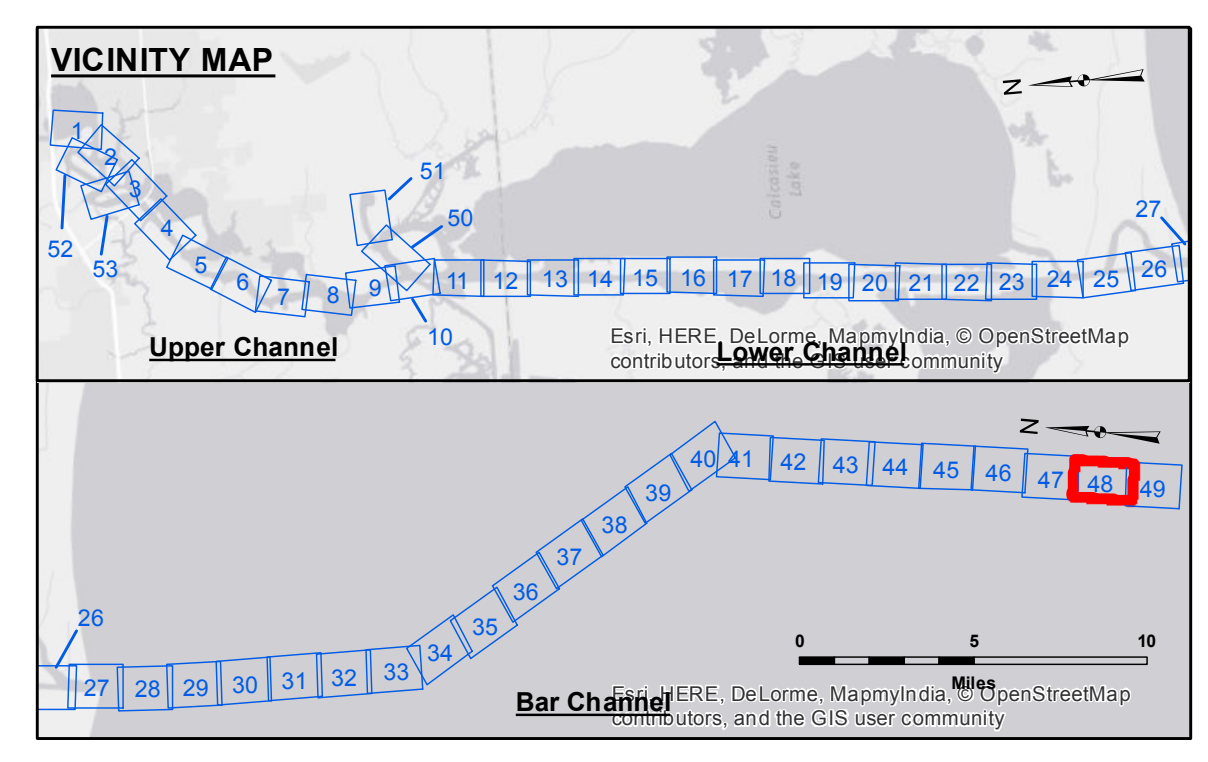
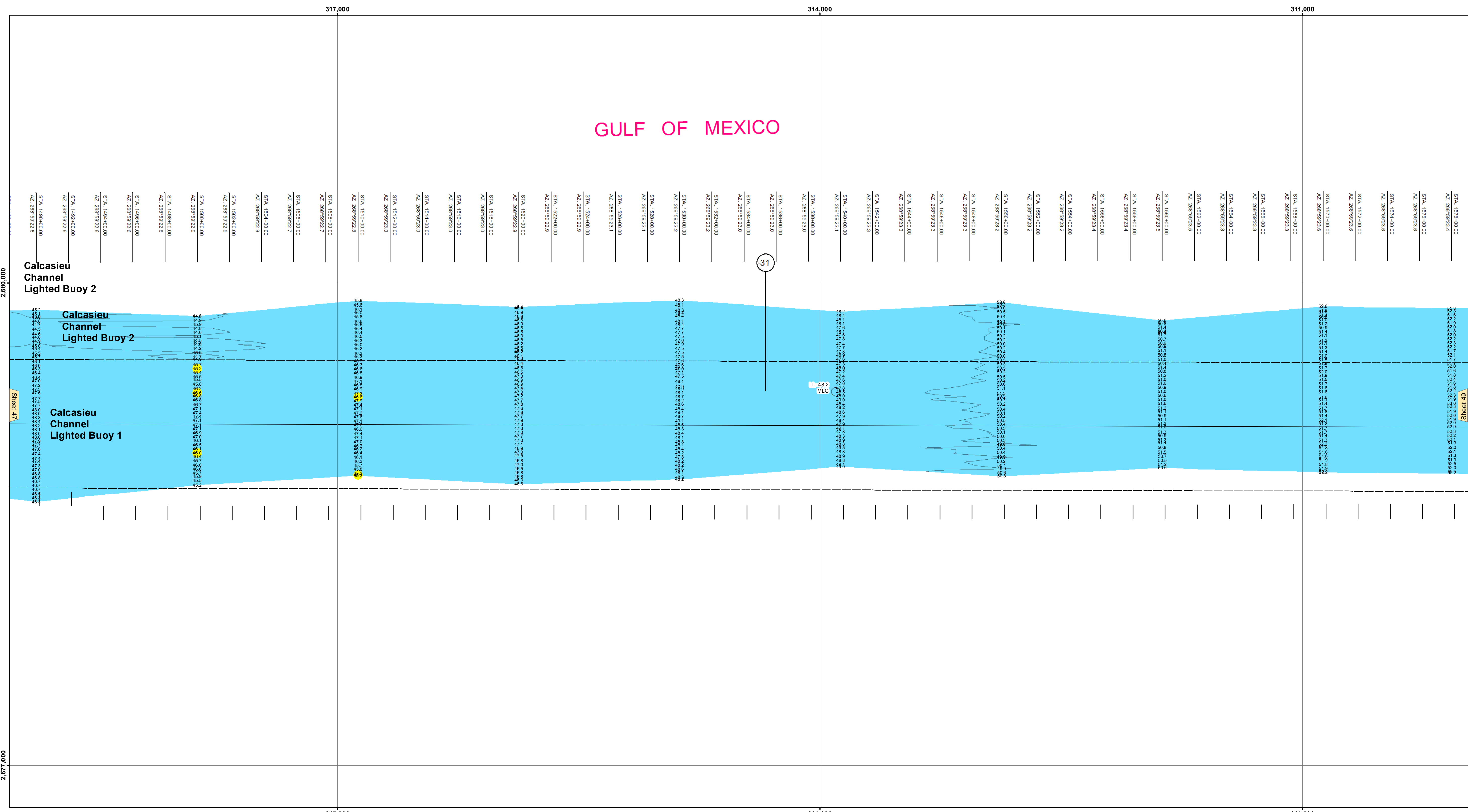
DISCLAIMER
The information depicted on this map represents the results of a hydrographic survey conducted by the U.S. Army Corps of Engineers. The user is responsible for the accuracy, completeness, and reliability of the data for their intended use. The Corps of Engineers does not warrant the accuracy, completeness, or reliability of the data for any purpose other than that intended for the original purpose. The user is responsible for the accuracy, completeness, and reliability of the data for their intended use. The Corps of Engineers does not warrant the accuracy, completeness, or reliability of the data for any purpose other than that intended for the original purpose.

Submitted:	Surveyed By:
Recommended:	SPS: JH
Approved:	Plotted By:
	BTD
	Checked By:
	TAF

CALCASIEU SHIP CHANNEL
BAR SHEET 48
CR_48_BAR_20151104
04 November 2015

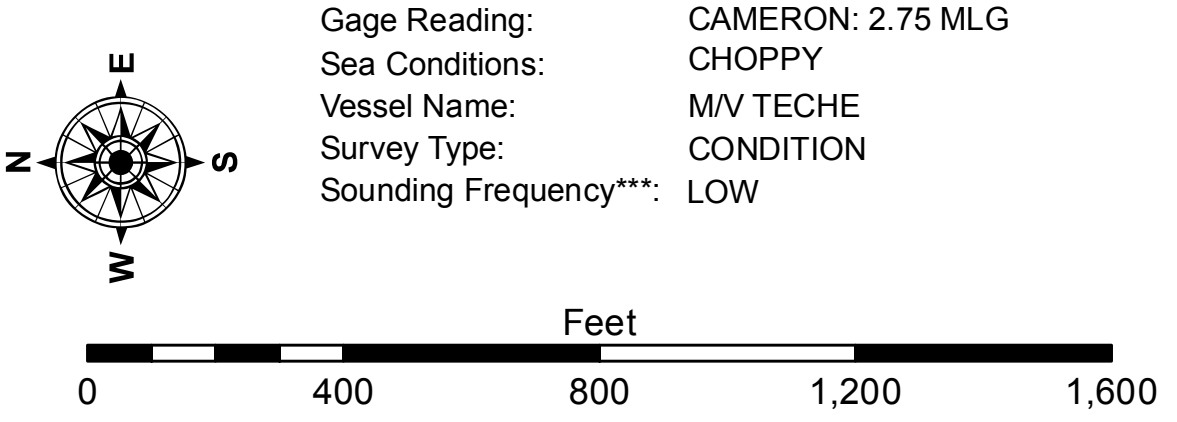
Sheet Reference Number
48 of 53

Revision Number:
3.8-0-20150202



LEGEND

Federal Navigation Channel	Cable Area	Borrow Area	-15' and above
Federal Navigation Center Line	Placement Area	Shoalest Sounding**	-15' to -20'
As-built Pipeline/Cable	Anchorage Area	Beacon, General	-20' to -25'
Unconfirmed Pipeline/Cable	Obstruction Point	Red Navigation Buoy	-25' to -32'
Project Depth Contour	Wrecks-Submerged	Green Navigation Buoy	-32' to -38'
			-38' to -40'
			-40' to -42'
			-42' and below



NOTES:
Horizontal Coordinate System: North American Datum of 1983 (NAD83), projected to the State Plane Coordinate System (SPCS), Louisiana South Zone. Distance units in U.S. Survey Feet.
Vertical Datum: Soundings are shown in feet and indicate depths below Mean Low Gulf Datum (MLG). Datum Relationships for gage 73650 as of December 2013: 0.0' NAVD83 (2009.55) = 1.3' MLLW = 2.3' MLG or 0.0' MLLW = 1.0' MLG
Distances on the Calcasieu River are shown at 1 mile intervals.
The location of navigation aids are based on and provided by the U.S. Coast Guard and USACE survey crews.
2010 Aerial Photography data source: NAIP
Reference is N.O.A. Navigation Chart No. 11339.
** Shoalest Sounding per Quarter per Reach.
*** High frequency (200 kHz) survey data represents the first signal return at a sounding location and will include suspended solids, known as "fluff", if present. Low frequency (20 kHz) survey data normally penetrates through this "fluff" layer to depict elevations of consolidated bottom material. Low frequency accuracies may vary depending on channel conditions and fathometer settings.