

NOTES:

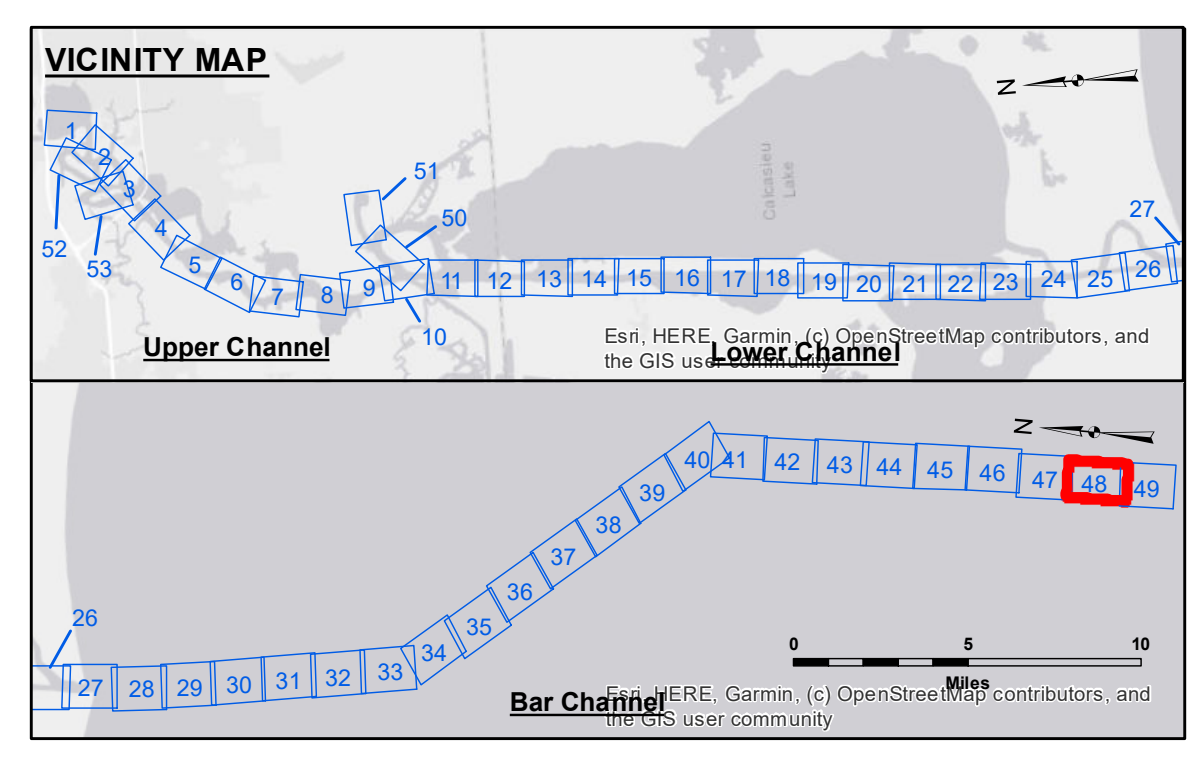
Access Constraints: The United States Government furnishes these data and the recipient accepts and uses them with the express understanding that the United States Government makes no warranty, expressed, or implied concerning the accuracy, completeness, reliability, usability or suitability for any particular purpose of the information. The user is responsible for the results of any use of the information. The user is responsible for the results of any use of the information. The user is responsible for the results of any use of the information.

Distribution Liability: The data represent the results of data collection sponsored by a specific US Army Corps of Engineers District. The data are not to be used for any purpose other than that for which they were collected. The user is responsible for the results of any use of the information. The user is responsible for the results of any use of the information.

Disclaimer: The information depicted on this map represents the results of a survey conducted in accordance with the standards of the Army Corps of Engineers. The information is not to be used for any purpose other than that for which it was collected. The user is responsible for the results of any use of the information. The user is responsible for the results of any use of the information.

U.S. ARMY CORPS OF ENGINEERS NEW ORLEANS DISTRICT		
Submitted:	Surveyed By: RYLAND ADAMS	Plotted By: AO
Recommended:	Chief, Survey Section	Checked By: AO
Approved:	Chief, Waterways Maintenance Section	

**CALCASIEU SHIP CHANNEL
BAR SHEET 48
CR_48_BAR_20201014_CS_POSTSTORM
14 October 2020**



LEGEND

- Federal Navigation Channel
- Federal Navigation Center Line
- As-built Pipeline/Cable
- Unconfirmed Pipeline/Cable
- Project Depth Contour
- Cable Area
- Placement Area
- ⊗ Obstruction Point
- ✶ Wrecks-Submerged
- 3 Fluff Thickness (feet)*
- Shoalest Sounding**
- ☆ Beacon, General
- ◆ Red Navigation Buoy
- ◇ Green Navigation Buoy
- -16' and above
- -16' to -21'
- -21' to -26'
- -26' to -33'
- -33' to -39'
- -39' to -41'
- -41' to -43'
- -43' and below

NOTES:

Coordinate System: North American Datum of 1983 (NAD83), projected to the State Plane Coordinate System (SPCS), Louisiana South Zone. Distance units in U.S. Survey Feet.

Vertical Datum: Soundings are shown in feet and indicate depths below Mean Lower Low Water Datum (MLLW). Datum Relationships for gage 73650 as of December 2013: 0.0' NAVD88 (2009.55) = 1.3' MLLW = 2.3' MLG or 0.0' MLLW = 1.0' MLG

Distances on the Calcasieu River are shown at 1 mile intervals.

The location of navigation aids are based on and provided by the U.S. Coast Guard and USACE survey crews.

2015 Aerial Photography data source: NAIP

Reference is N.O.A.A. Navigation Chart No. 11339.

* Difference between high and low frequency elevations where greater than 1.0'.

** Shoalest Sounding per Quarter per Reach.

*** High frequency (200 kHz) survey data represents the first signal return at a sounding location and will include suspended solids, known as "fluff", if present. Low frequency (20 kHz) survey data normally penetrates through this "fluff" layer to depict elevations of consolidated bottom material. Low frequency accuracies may vary depending on channel conditions and fathometer settings.

Gage Reading: CAMERON: 2.3 MLLW AVG
Sea Conditions: CHOPPY
Vessel Name: M/V VALENTOUR
Survey Type: CONDITION
Sounding Frequency***: LOW

**Sheet Reference Number
48 of 53**

Revision Number:
4.1-20191105