

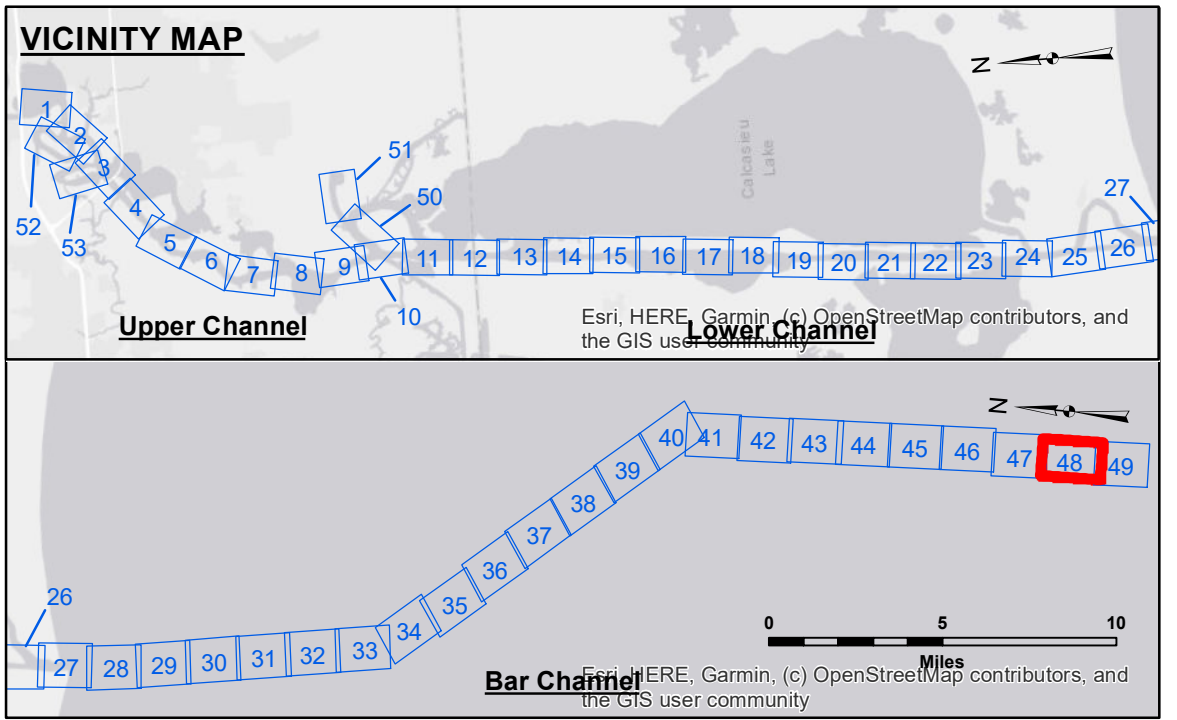
**US Army Corps of Engineers District: CEMV**

**NOTES:**

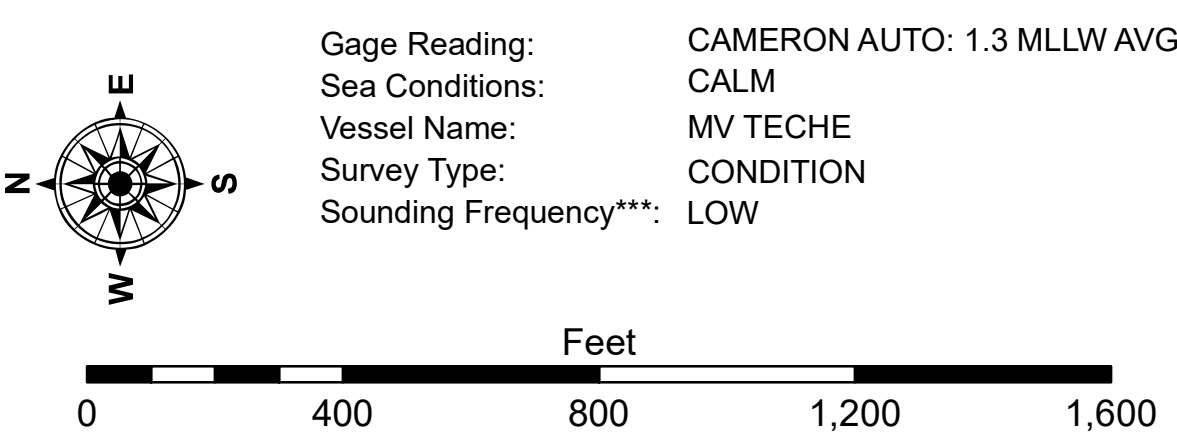
The information depicted on this map represents the results of a survey conducted by the U.S. Army Corps of Engineers. It is not intended to be used for any purpose other than that for which it was prepared. The user is responsible for the accuracy, completeness, and reliability of the information for their intended use. The Corps of Engineers does not warrant the accuracy, completeness, or reliability of the information for any other purpose. The user is responsible for the accuracy, completeness, and reliability of the information for their intended use. The Corps of Engineers does not warrant the accuracy, completeness, or reliability of the information for any other purpose.

U.S. ARMY CORPS OF ENGINEERS NEW ORLEANS DISTRICT		
Submitted:	Surveyed By: SP-JS	Plotted By: AO
Recommended:	Chief, Survey Section	Checked By: AO
Approved:	Chief, Waterways Maintenance Section	

**CALCASIEU SHIP CHANNEL**  
**BAR SHEET 48**  
**CR\_48\_BAR\_20230503\_CS**  
**03 May 2023**



LEGEND	
--- Federal Navigation Channel	○ Cable Area
— Federal Navigation Center Line	□ Placement Area
— As-built Pipeline/Cable	□ Anchorage Area
..... Unconfirmed Pipeline/Cable	⊗ Obstruction Point
— Project Depth Contour	✈ Wrecks-Submerged
3 Fluff Thickness (feet)*	★ Beacon, General
● Shoalest Sounding**	◆ Red Navigation Buoy
○ Green Navigation Buoy	



**NOTES:**

Coordinate System: North American Datum of 1983 (NAD83), projected to the State Plane Coordinate System (SPCS), Louisiana South Zone. Distance units in U.S. Survey Feet.

Vertical Datum: Soundings are shown in feet and indicate depths below Mean Lower Low Water Datum (MLLW). Datum Relationships for gage 73650 as of December 2013: 0.0' NAVD88 (2009.55) = 1.3' MLLW = 2.3' MLG or 0.0' MLLW = 1.0' MLG

Distances on the Calcasieu River are shown at 1 mile intervals.

The location of navigation aids are based on and provided by the U.S. Coast Guard and USACE survey crews.

2015 Aerial Photography data source: NAIP

Reference is N.O.A.A. Navigation Chart No. 11339.

\* Difference between high and low frequency elevations where greater than 1.0'.

\*\* Shoalest Sounding per Quarter per Reach.

\*\*\* High frequency (200 kHz) survey data represents the first signal return at a sounding location and will include suspended solids, known as "fluff", if present. Low frequency (20 kHz) survey data normally penetrates through this "fluff" layer to depict elevations of consolidated bottom material. Low frequency accuracies may vary depending on channel conditions and fathometer settings.

**Sheet Reference Number**  
**48 of 53**

Revision Number:  
 4.2-20240420