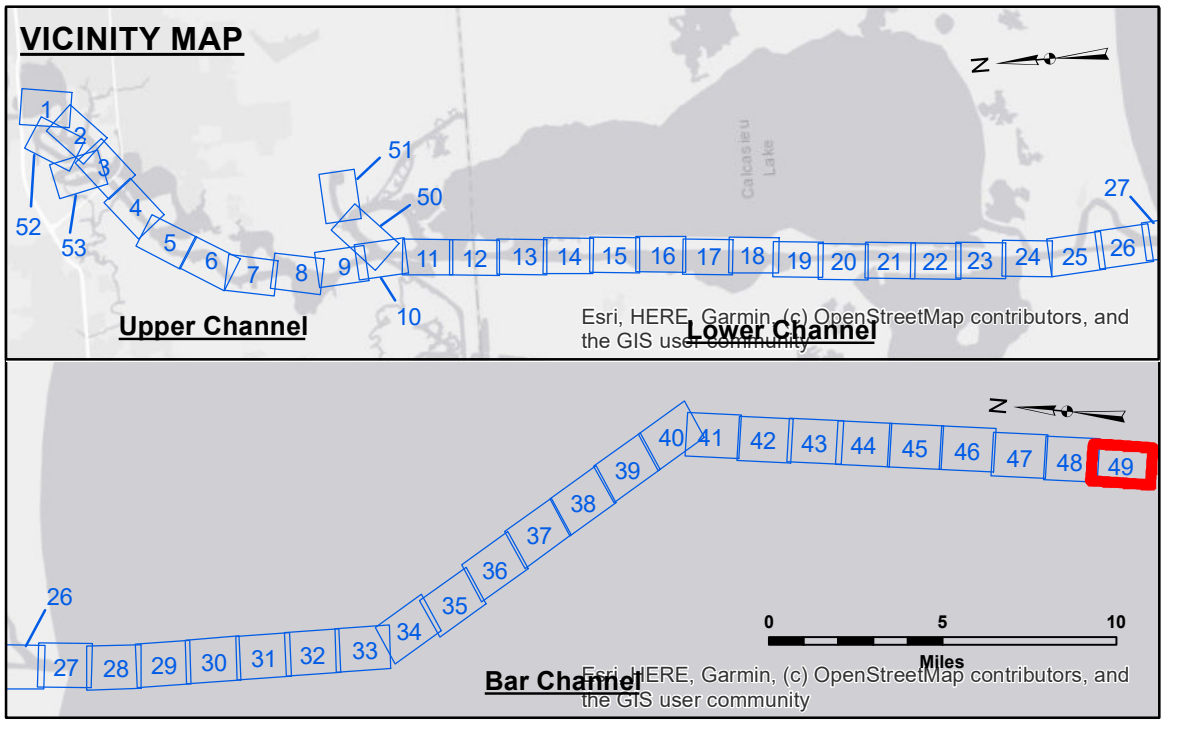


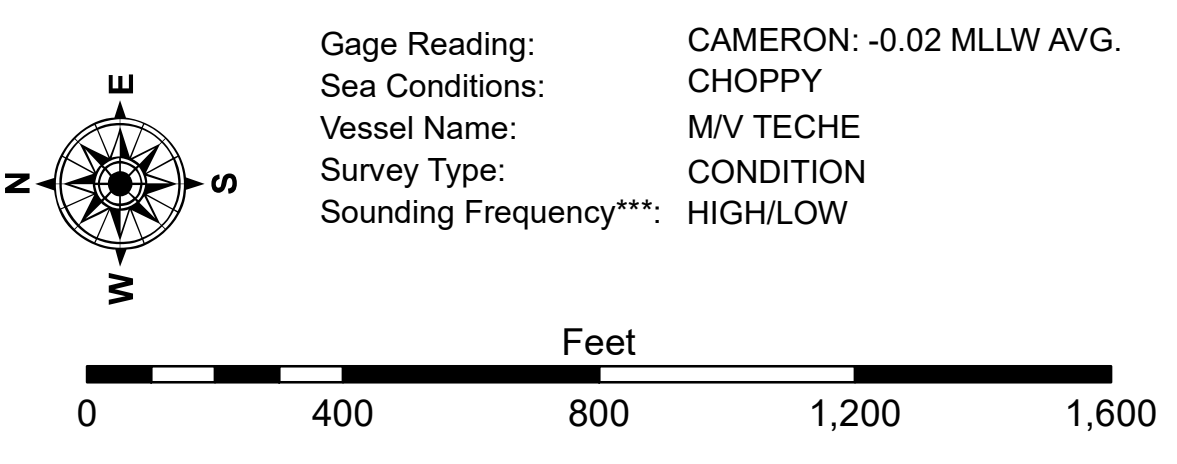
DISCLAIMER
 The information depicted on this map represents the results of a survey conducted by the U.S. Army Corps of Engineers. The data represents the results of data collection/processing for a specific US Army Corps of Engineers project. It is only valid for its intended use, content, time and accuracy specifications. The user is responsible for the results of any application of the data for other than its intended purpose.
 Date Constants: Hydrographic survey data is subject to change rapidly due to several factors including, but not limited to, changing hydrological conditions which develop after the date of the survey. The US Army Corps of Engineers accepts no responsibility for changes in the hydrological conditions which develop after the date of the survey. The user is responsible for determining the accuracy of the data for their intended use. Prudent mariners should not rely solely upon this information.

U.S. ARMY CORPS OF ENGINEERS NEW ORLEANS DISTRICT		
Submitted:	Surveyed By: SP-JS	Plotted By: BD
Recommended: Chief, Survey Section	Checked By: AO/JH	
Approved:	Chief, Waterways Maintenance Section	

CALCASIEU SHIP CHANNEL
BAR SHEET 49
CR_49_BAR_20241218_CS
18 December 2024



LEGEND	
--- Federal Navigation Channel	○ Cable Area
— Federal Navigation Center Line	□ Placement Area
— As-built Pipeline/Cable	□ Anchorage Area
..... Unconfirmed Pipeline/Cable	⊗ Obstruction Point
— Project Depth Contour	✈ Wrecks-Submerged
3 Fluff Thickness (feet)*	★ Beacon, General
● Shoalest Sounding**	◆ Red Navigation Buoy
◆ Green Navigation Buoy	



NOTES:
 Coordinate System: North American Datum of 1983 (NAD83), projected to the State Plane Coordinate System (SPCS), Louisiana South Zone. Distance units in U.S. Survey Feet.
 Vertical Datum: Soundings are shown in feet and indicate depths below Mean Lower Low Water Datum (MLLW). Datum Relationships for gage 73650 as of December 2013: 0.0' NAVD88 (2009.55) = 1.3' MLLW = 2.3' MLG or 0.0' MLLW = 1.0' MLG
 Distances on the Calcasieu River are shown at 1 mile intervals.
 The location of navigation aids are base on and provided by the U.S. Coast Guard and USACE survey crews.
 2015 Aerial Photography data source: NAIP
 Reference is N.O.A.A. Navigation Chart No. 11339.
 * Difference between high and low frequency elevations where greater than 1.0'.
 ** Shoalest Sounding per Quarter per Reach.
 *** High frequency (200 kHz) survey data represents the first signal return at a sounding location and will include suspended solids, known as "fluff", if present. Low frequency (20 kHz) survey data normally penetrates through this "fluff" layer to depict elevations of consolidated bottom material. Low frequency accuracies may vary depending on channel conditions and fathometer settings.

Sheet Reference Number
49 of 53